



# Canon PowerShot G1 X Mark II Lens Replacement

This guide will show you how to replace the lens assembly on a Canon Powershot G1 X Mark II

Written By: Ryan Dunn



---

## INTRODUCTION

This guide shows how to replace the lens of your camera. This replacement would be necessary if the lens of your camera has a scratch on it or if your camera is not taking pictures properly due to faulty connections from the lens to the internal components of your camera.



### TOOLS:

- [Heavy-Duty Spudger](#) (1)
  - [Tweezers](#) (1)
  - [Screwdriver](#) (1)  
Hex 1.3 Head
  - [Phillips #000 Screwdriver](#) (1)
-

## Step 1 — Battery



- Locate the battery housing cover on the bottom of your camera.
- Place a finger on the textured portion of the battery housing cover.
- Slide the cover in the direction that the arrow is pointing.

## Step 2



- Use your finger to pivot the orange tab away from the battery.

## Step 3



- Pull the battery out of the housing with your fingers.

## Step 4 — Motherboard



- Remove the two 4mm Hex screws that connect the grip to the camera with a Hex head screwdriver.
- Remove the two Phillips screws to the left of the hex screws with a Phillips head screwdriver:
  - One 2mm screw
  - One 3mm screw
- Remove the grip from the front of the camera by pulling it away from the lens and then away from the camera.



## Step 5



- Remove the following three Philips screws from the flash release side of the camera with a Philips Head screwdriver:
  - One 2.5mm screw
  - One 4.5mm screw
  - One 1.75mm screw

## Step 6



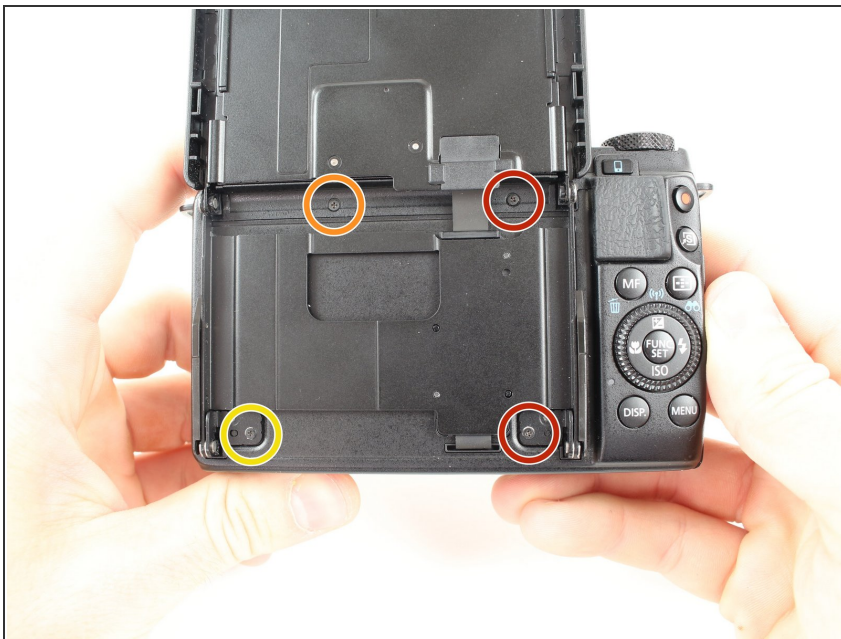
- Remove the following three Philips screws from the bottom of the camera with a Philips Head screwdriver:
  - One 3.25mm screw
  - One 2.5mm screw
  - One 2.75mm screw

## Step 7



- Rotate the LCD screen away from the camera.

## Step 8



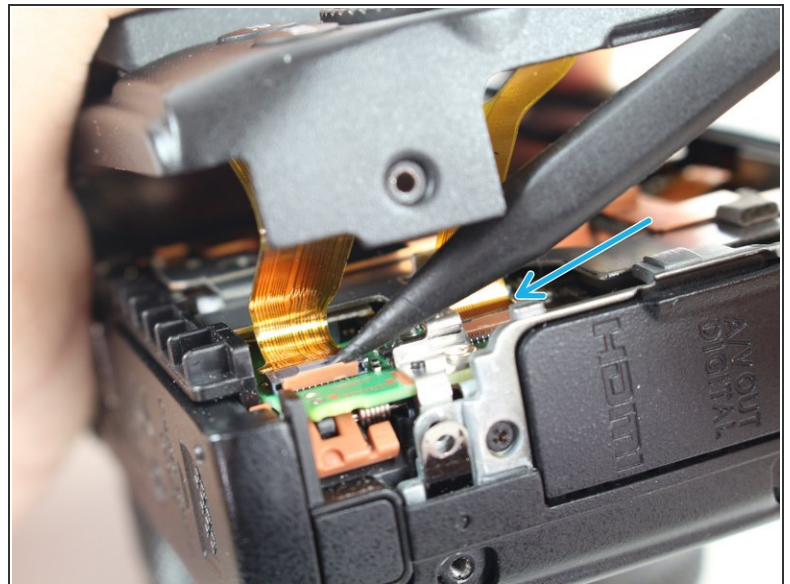
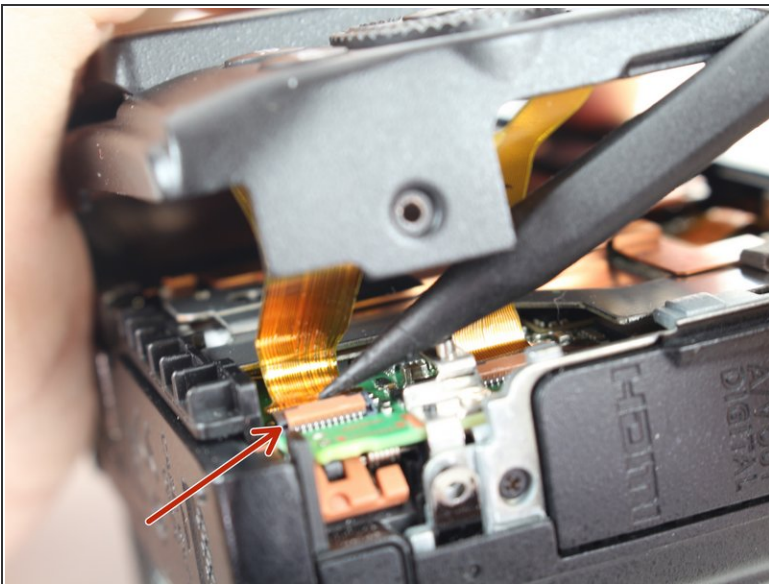
- Remove the following four Phillips screws securing the back panel with a Phillips Head screwdriver:
  - Two 3 mm screws
  - One 2mm screw
  - One 2.5 mm screw

## Step 9



- Lift the back casing up far enough to expose the ribbon cables.

## Step 10



- Use a plastic spudger to gently release the locking tab holding the ribbon cable, closest to the edge of the camera, in place.
- Repeat this process for the second ribbon cable to the right.
- Carefully lift the back casing away from the camera.

This document was generated on 2020-11-28 04:53:22 AM (MST).

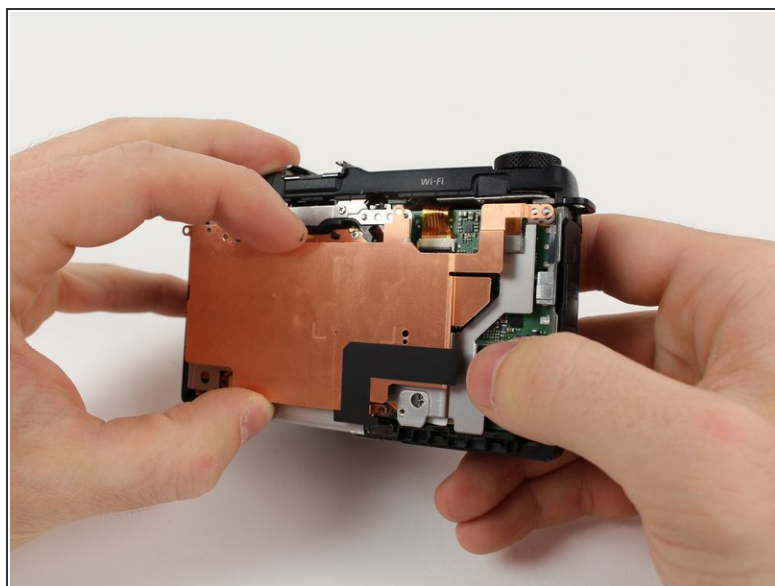
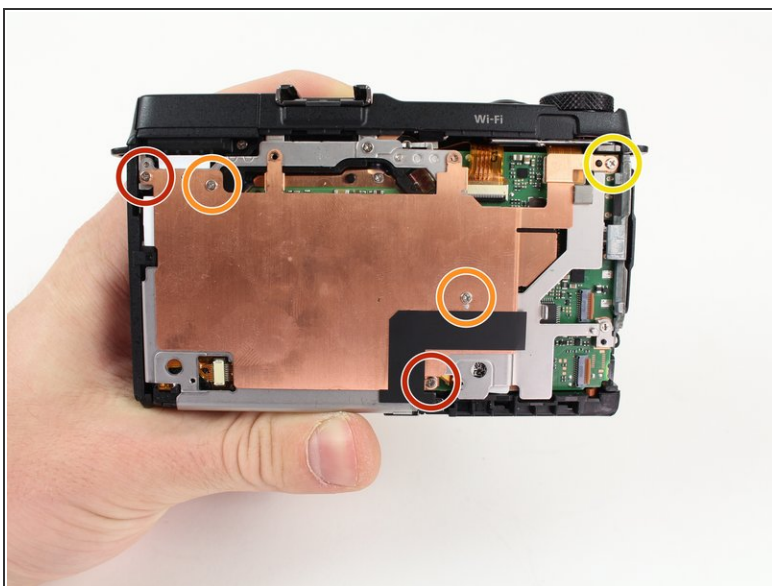


## Step 11



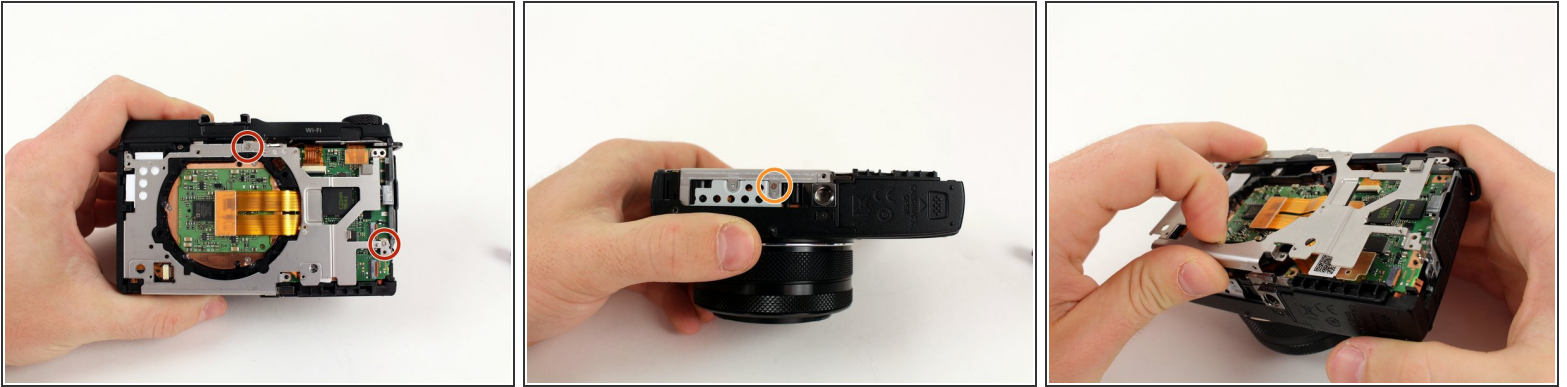
- Carefully lift the back casing away from the camera.

## Step 12



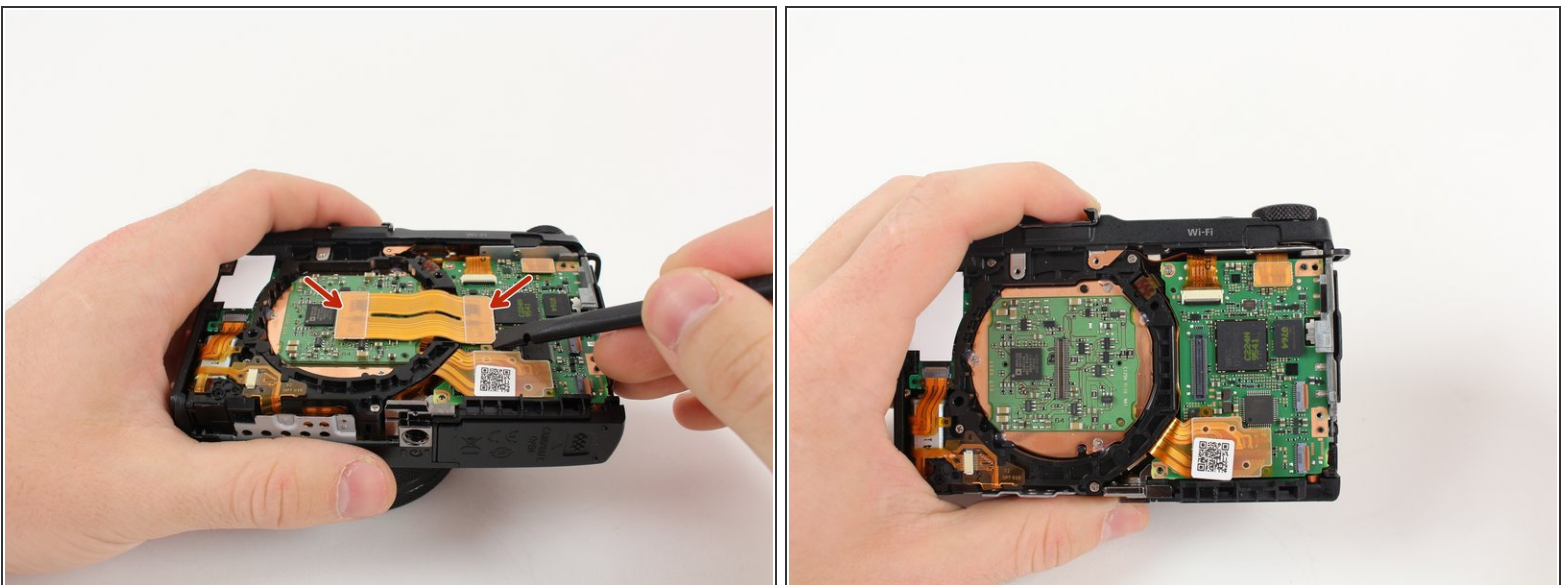
- Remove the five Phillips screws that are attached to the copper plate with a Philips Head screwdriver:
  - Two 3mm screws
  - Two 1.5mm screws
  - One 4mm screw
- Lift the copper plate away from the camera.

## Step 13



- Remove the following three Phillips screws securing the silver plate with a Philips Head screwdriver:
  - Two 2.9mm screws on the front of the camera
  - One 1.8mm screw on the bottom of the camera
- Lift the silver plate away from the camera.

## Step 14



- Use the plastic spudger to lift up both sides of the ribbon cable from its connector pins.
- ⓘ The male end is on the left and the female end is on the right. The right side of the cable is notched.



## Step 15



- Use the flat end of the plastic spudger to rotate the black plastic locking tab towards the ribbon cable.
  - Insert the pointed end of the plastic spudger into a small hole on the side of the ribbon cable and pull the ribbon cable out of its housing.
  - Use the flat end of the plastic spudger to pry the ribbon cable connector from the motherboard.
- ⓘ Both ribbon cables should be removed after this step.

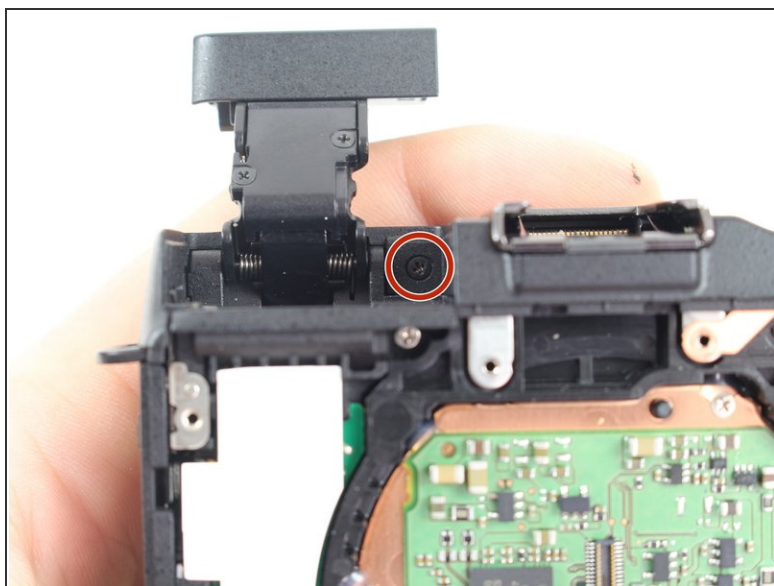
## Step 16



- Release the flash by sliding the flash release towards the lens.
- ⓘ The flash release is located on the side of the camera closest to the lens.



## Step 17



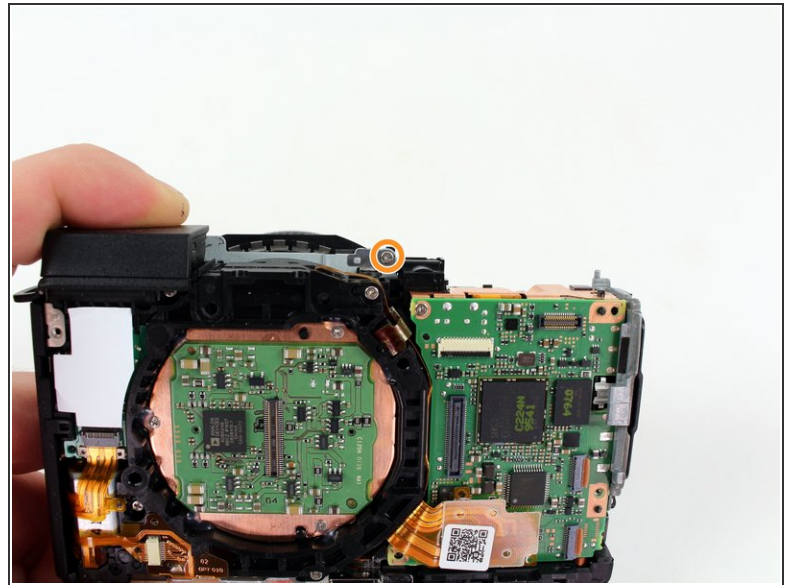
- Remove the following two Phillips screws from the flash cavity with a Philips Head screwdriver:
  - Remove the 2mm screw to the right of the flash.
  - Remove the 2.5mm screw to the left of the flash.

## Step 18



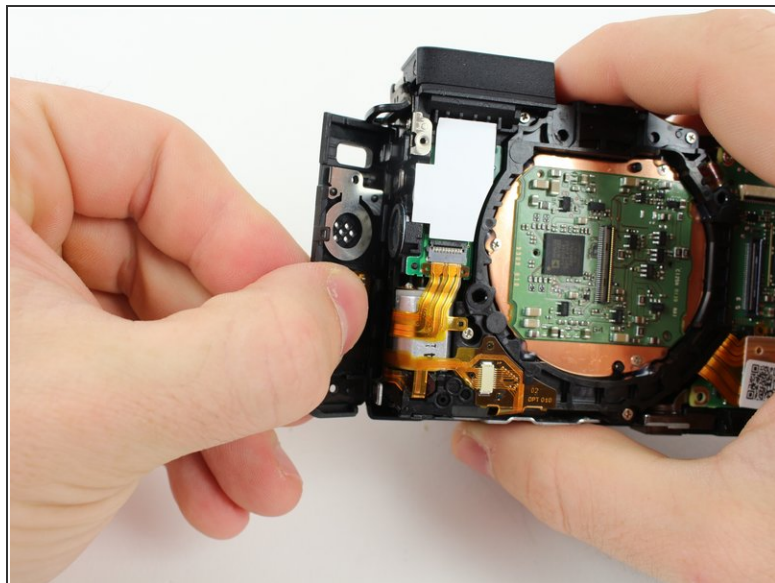
- Remove the 2.5mm Phillips screw from the front plate with a Phillips head screwdriver.
- Pull up on the top portion of the camera to separate the top casing from the camera body.
- ⓘ Make sure the flash is up. Otherwise the top casing will not release.

## Step 19



- Remove the 3.5mm Phillips screw from the grey tab on the top of the camera with a Philips Head screwdriver.
- Rotate the camera so the back panel is facing you.
- Remove the 1.4mm Phillips screw from the sliver tab near the top of the camera with a Philips Head screwdriver.

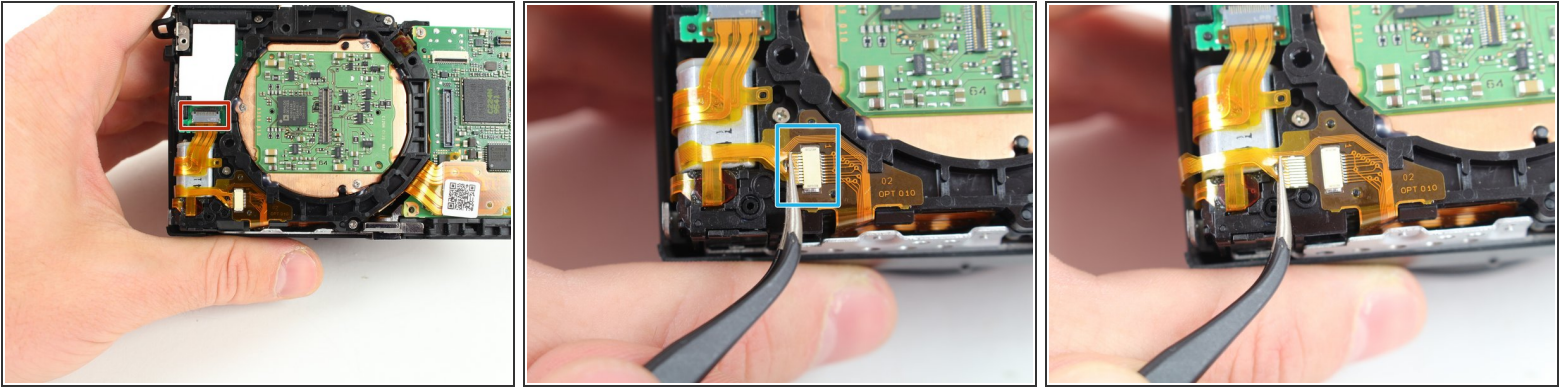
## Step 20



- Use the flat end of the plastic spudger to release the plastic retaining clip on the side plate closest to the lens.
- Rotate the side plate closest to the lens toward the lens of the camera and then pull the plate away from the camera.

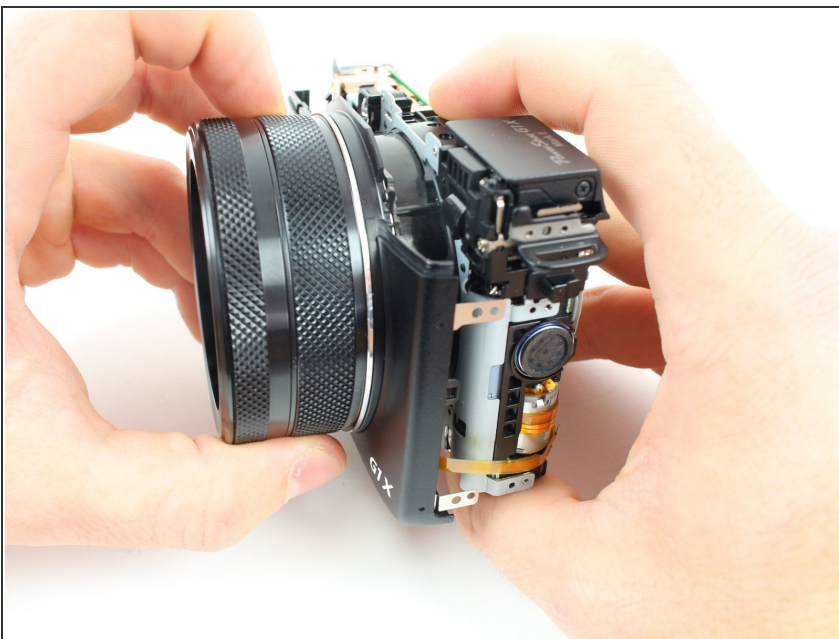


## Step 21



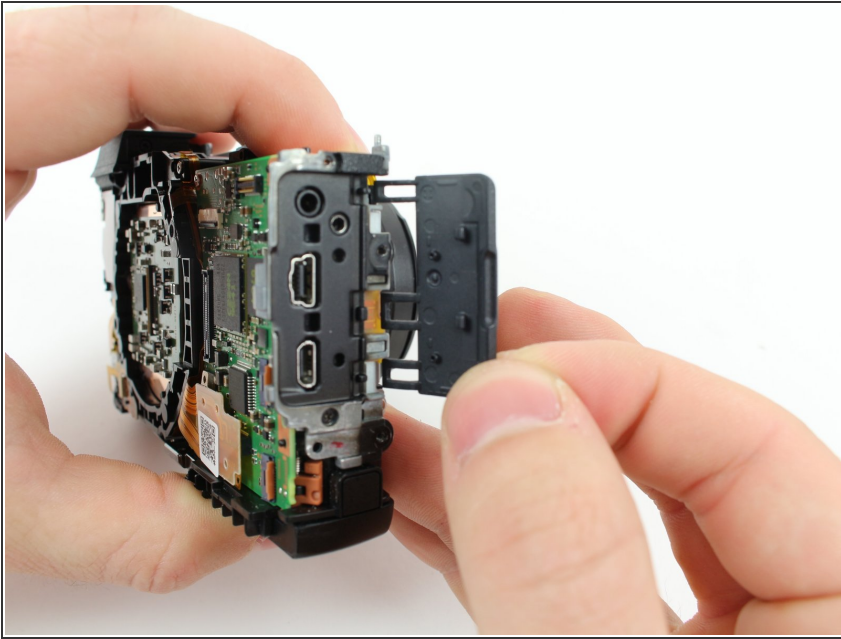
- Release the plastic locking tab of the upper ribbon cable with the plastic spudger.
  - Pull the top ribbon cable from its mount with the fine tip metal tweezers.
  - Remove the bottom ribbon cable with the fine tip metal tweezers by pulling it toward the flash switch side of the camera.
- ❗ The bottom ribbon cable does not have a locking tab; it simply slides in and out.

## Step 22



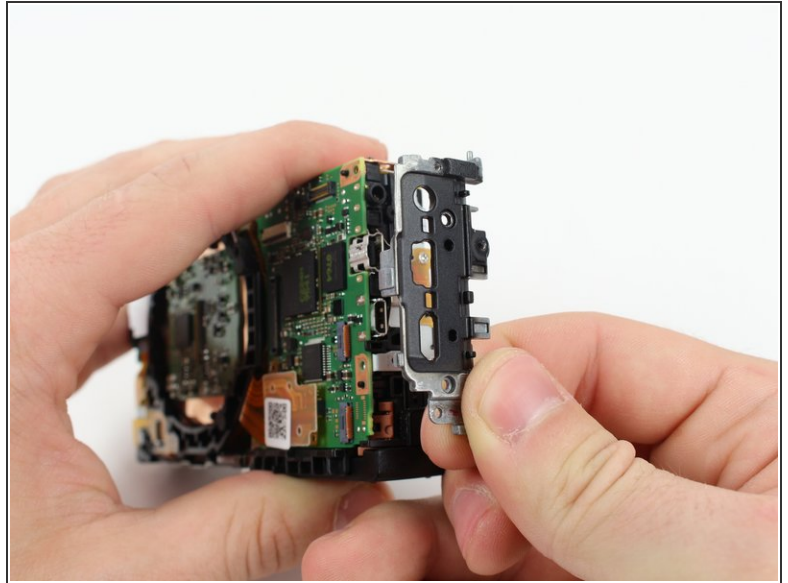
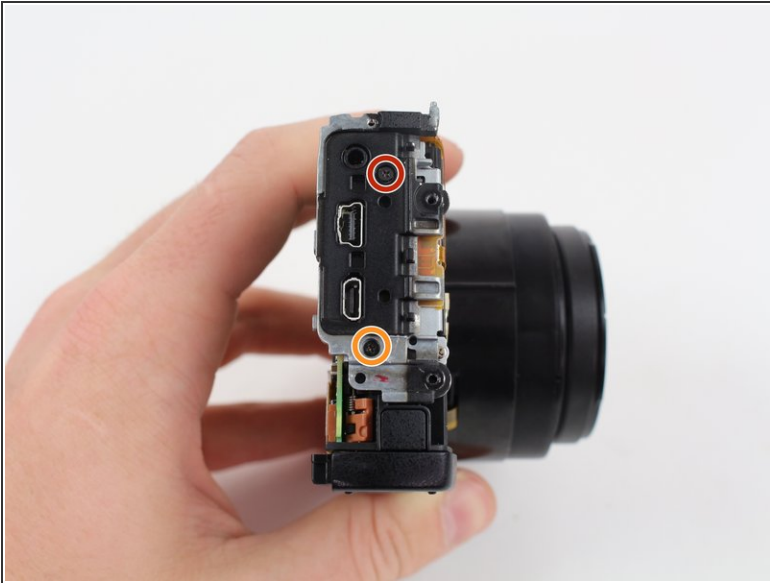
- Pull the front plate off the camera body.
- ❗ It should slide off easily. If it does not, ensure that all screws and ribbon cables from previous steps have been removed or disconnected.

## Step 23



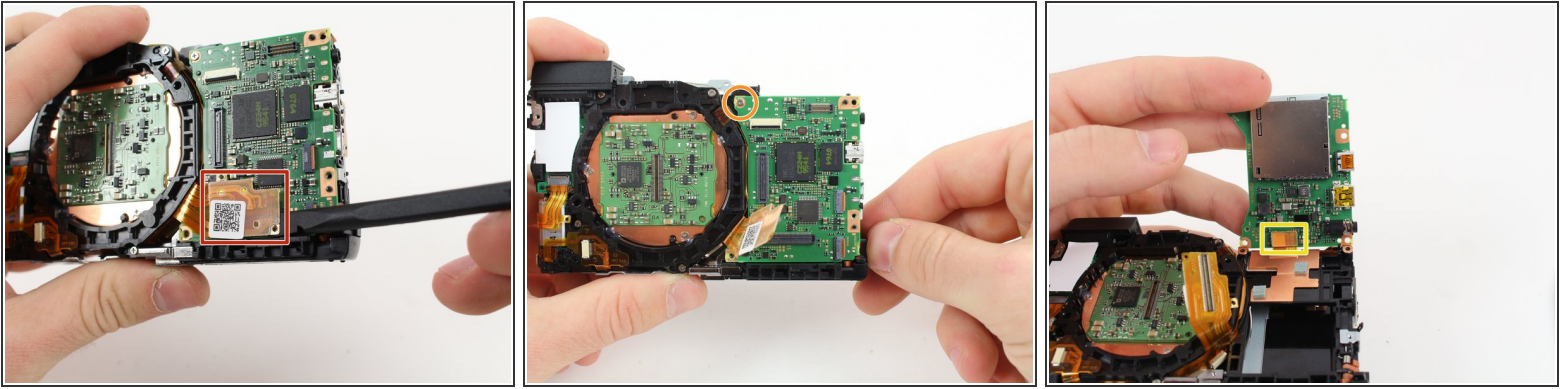
- Remove the rubber dust cover from the camera by moving the hooks away from the three prongs holding them in place and then pulling the cover away from the camera.

## Step 24



- Remove the following two Phillips screws from the side of the camera with the three connector ports with a Phillips head screwdriver:
  - One 2.5mm screw
  - One 3.3mm screw
- Pull the metal shield away from the camera.

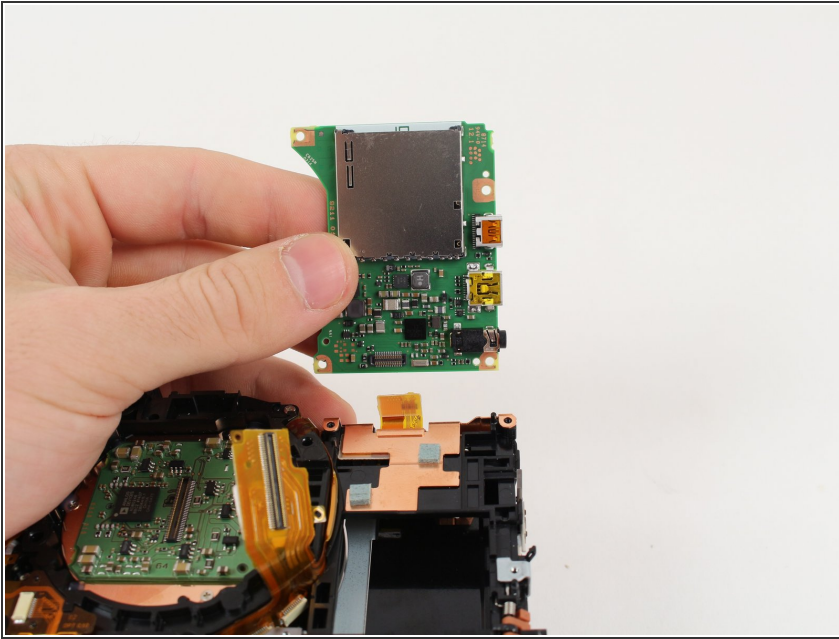
## Step 25



- Use the plastic spudger to remove the ribbon cable from the motherboard by placing the spudger under the ribbon cable connector and pulling up.
- Remove the 2.8mm screw from the motherboard.
- ⚠ Do not try to remove the motherboard from the camera yet.
- Carefully rotate the motherboard upward.
- Use the plastic spudger to remove the ribbon cable from the bottom of the motherboard by placing the spudger under the ribbon cable connector and pulling up.

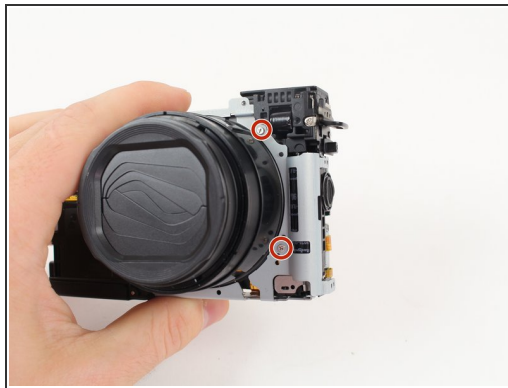



## Step 26



- Lift the motherboard away from the camera.

## Step 27 — Lens



 Lay the camera on a flat surface while performing these steps because removing the frame causes the camera to fall apart.

- Remove the four 4.25mm Philips screws from the silver frame that surrounds the lens of the camera with a Philips Head screwdriver.
- Remove the frame by lifting straight up.

## Step 28



- Separate the lens from the other components of the camera.

To reassemble your device, follow these instructions in reverse order.