



Microsoft Bluetooth Notebook Mouse 5000

Teardown

After batteries corroded in the mouse I needed to get to the inside. I also love tearing things apart.

This guide is my own work but thanks to Joe Ten 's blog

<http://joeten.blogspot.com/2011/01/dismantle-microsoft-bluetooth-notebook.html>

Written By: Kenny Rasmussen



INTRODUCTION

Teardown of Microsoft's Bluetooth Notebook Mouse 5000 - Thanks to Joe Ten for his guide and making mistakes so I didn't have to: [Blog Teardown](#)



TOOLS:

- [T6 Torx Screwdriver](#) (1)
 - [Phillips #0 Screwdriver](#) (1)
-

Step 1 — The Victim - where to start



- Pop off the laser symbol from the back of the mouse. it is stuck on with a simple adhesive.
- Torx 6 screw under the cover
- DO NOT try to remove the Microsoft spine between the buttons. It will break. we'll cover what to do with it in the next step.

Step 2 — 2 more screws to release the top



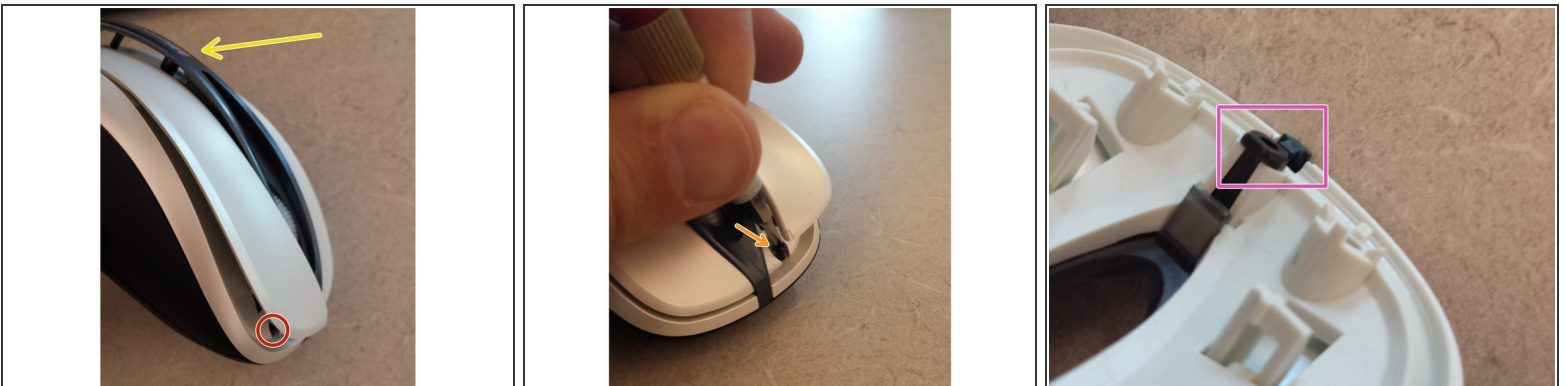
- Don't try to remove the "Microsoft" spine piece.
- Just move aside the spine to get to the 2x Phillips 0 screws below.

Step 3 — Don't try to remove the "Microsoft spine"



- This side to side motion also lets you pop the L and R buttons past the grey spine as needed for the next step.

Step 4 — Remove the top plate and L+R clicker



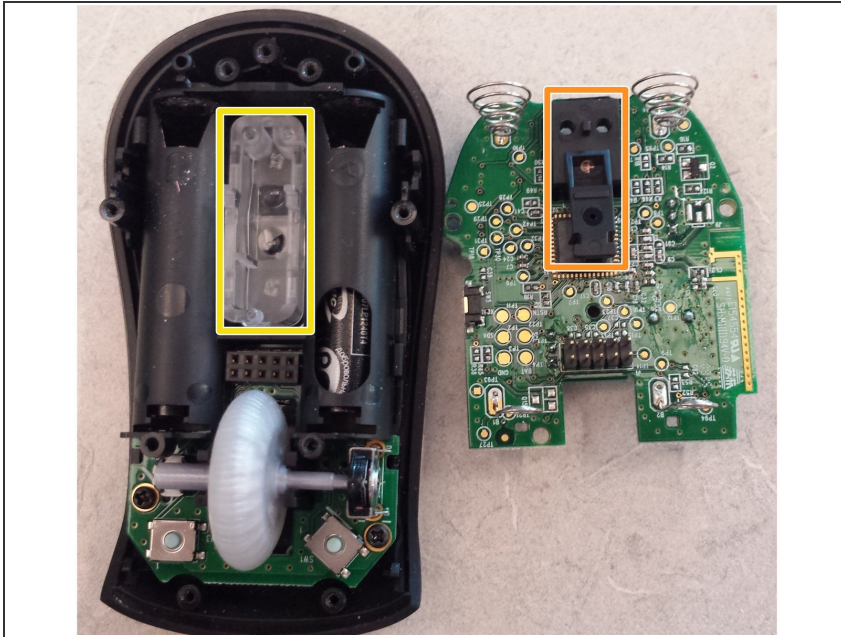
- The last 2x 00 philips screws are located under the L and R click buttons.
- Do not remove the "Microsoft spine" piece. Instead move it aside to pop the buttons past it.
- You might have to angle your screwdriver to get to the screws but this was not too difficult. I found it easier to come in from the middle.
- The "Microsoft spine" is pressed into the button assembly using a one way barb as pictured. This would break if you try and take it off before removing the whole assembly.

Step 5 — Remove the wings



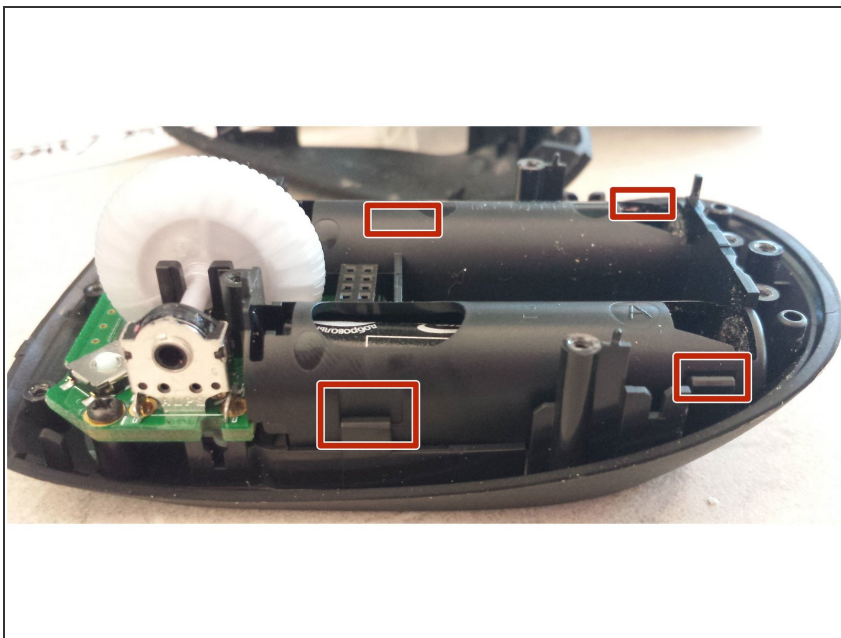
- The left and right sides hinge up then tip out away from the device. No screws, just two pegs per side.
- 3x phillips 00 screws hold the main board on.
- 2x phillips 00 screws hold the L + R buttons and scroll wheel assembly.
- The laser eye board seems to be soldered to main board and is not removable.
- 2x torx T6 screws hold the lens to the main board. Unless you need to clean this, there is no need to remove these screws.
- To re-assemble the wings, drop the front onto the front peg then "hinge" down onto the back peg.

Step 6 — Inside



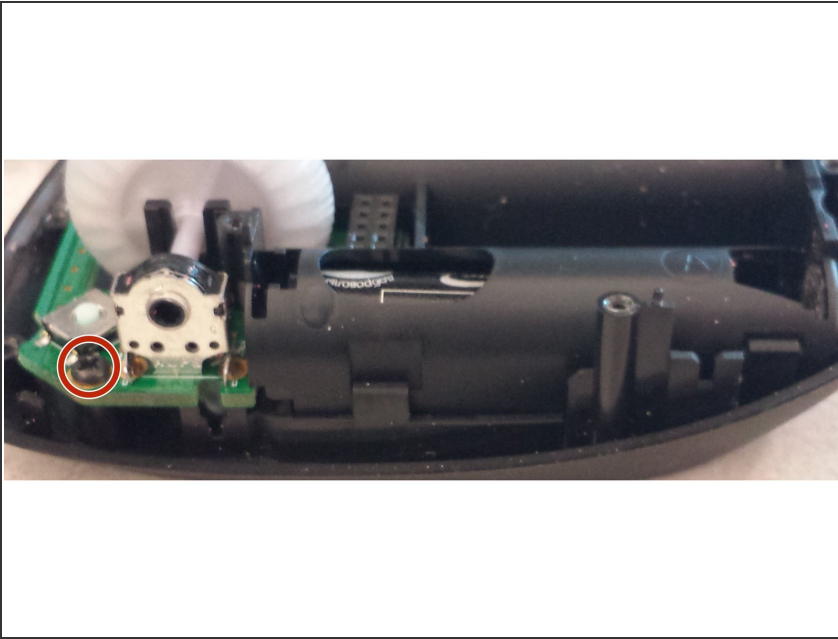
- This is the underside of the main board.
- A clear laser lens rests in the black base if the 2x T6 screws are removed.
- The other half of the laser lens.

Step 7 — Remove battery holder



- 4x plastic clips hold the battery case. To remove, un-clip one side and tip out.

Step 8 — The end



- 2x phillips 00 screws hold the wheel and button assembly. I never removed this because of the two buttons underneath. Any further tear down should be simple.