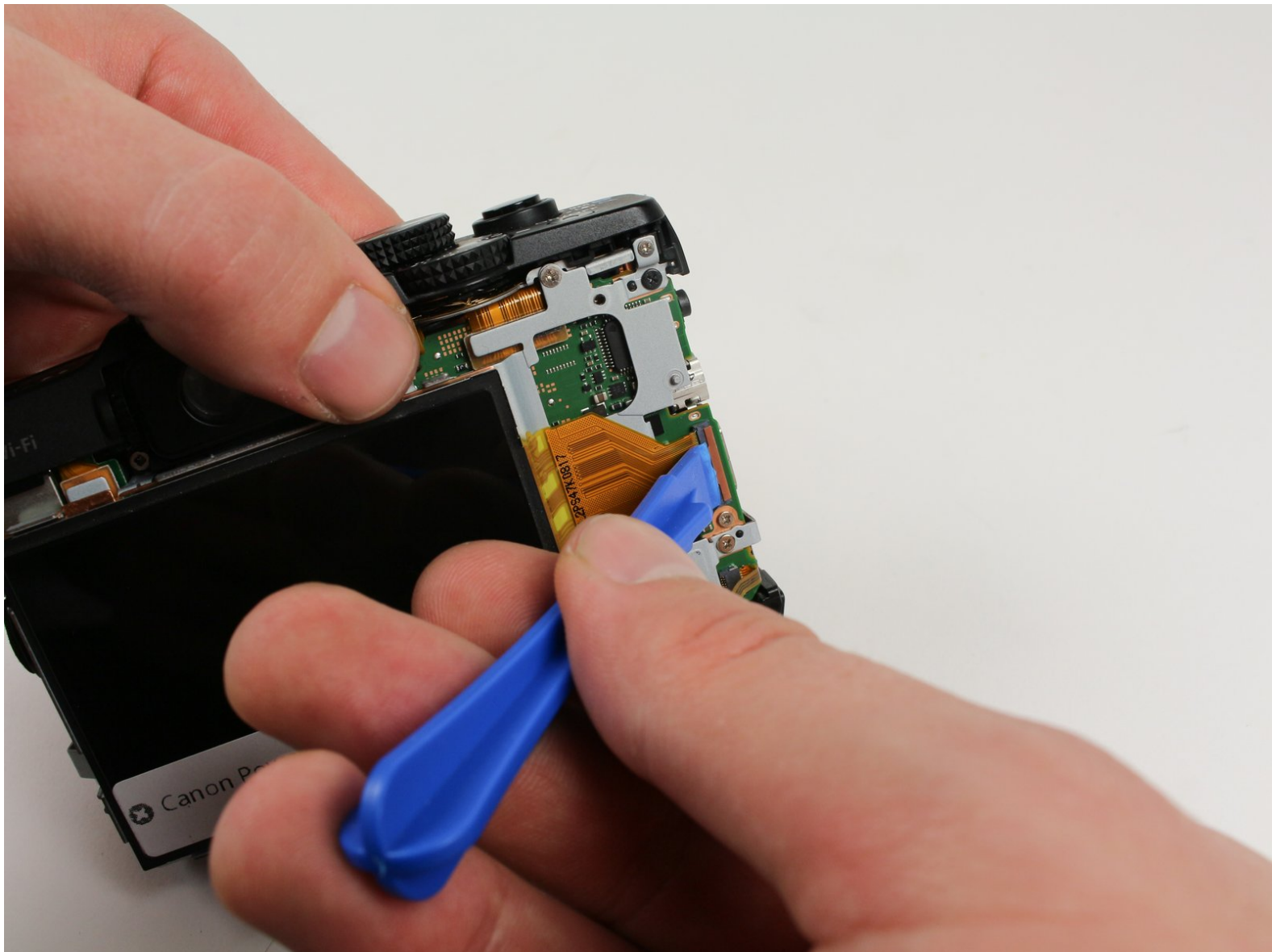




# Canon PowerShot G16 LCD Replacement

This guide will show users how to replace their broken or cracked LCD.

Written By: Jonathan Harger



## INTRODUCTION

Please follow these steps to replace the LCD Screen. Your LCD screen may require replacement if it no longer displays an image or has been cracked or damaged.

---

### TOOLS:

- [Anti-Static Wrist Strap](#) (1)
  - [Phillips #00 Screwdriver](#) (1)
  - [iFixit Opening Tools](#) (1)
  - [Tweezers](#) (1)
-

## Step 1 — Battery



- Open the battery flap on the bottom of the camera by applying pressure and pushing in the direction of the arrow.
- Remove your finger and allow the flap to pop open.

## Step 2



- Push the brown lever so that it pivots counterclockwise.
- Grip and remove the battery.

## Step 3 — Button Circuit Board



- Remove the ring around the lens by simultaneously pressing the black button located at the bottom right of the ring and rotating the ring counterclockwise.

## Step 4



- Remove the four 3.3 mm screws on the bottom of the camera using a Phillips #00 screwdriver.

## Step 5



- Remove the 3.3 mm screw on the right side of the viewfinder using a Phillips #00 screwdriver.

## Step 6



- Remove the two 3.3 mm screws near the speaker using a Phillips #00 screwdriver.

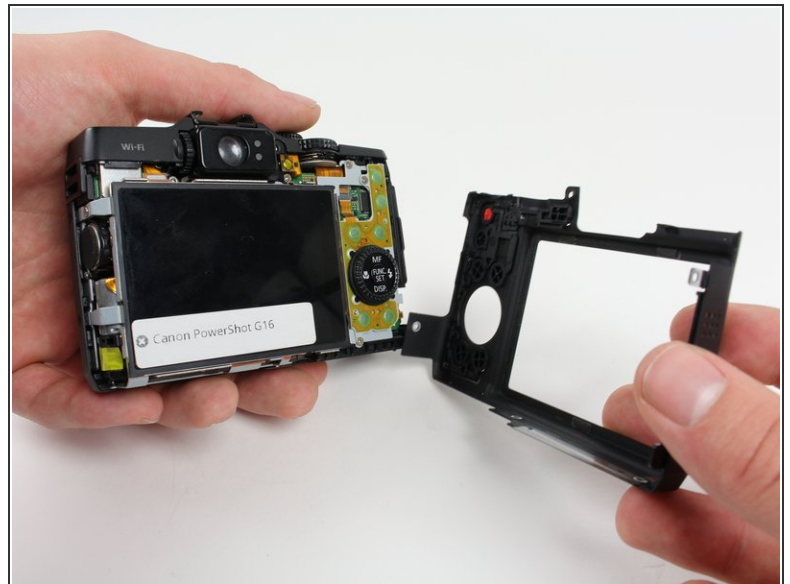


## Step 7



- Open the port cover by lifting up the tab with your finger and remove the 3.3 mm screw underneath the cover using a Phillips #00 screwdriver.
- Remove the other 3.3 mm screw below the ports using a Phillips #00 screwdriver.

## Step 8



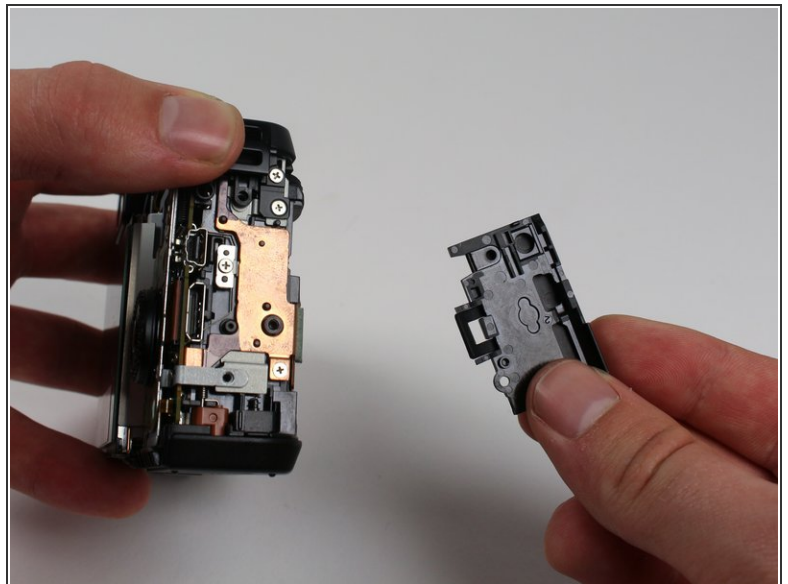
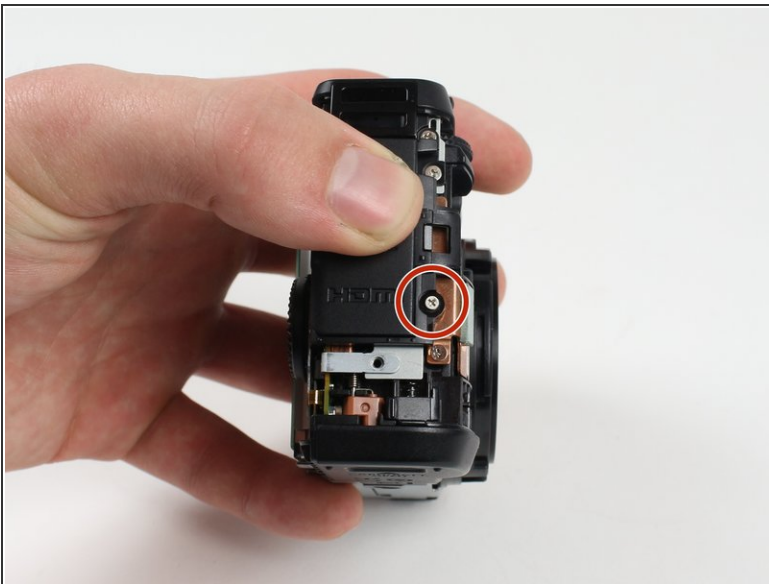
- Using your fingers, carefully pull the the back cover off by grabbing the bottom left of the back cover and pulling outwards.

## Step 9



- Using your fingers, carefully pry the front cover off starting at the bottom right.

## Step 10



- Remove the 3.8 mm screw at the bottom right of the port cover housing using a Phillips #00 screwdriver.
- Lift away the port cover housing.

## Step 11



- Reorient the camera so that you are looking at the back.
- ⚠ Make sure to pull the connector straight down as pulling up may cause harm to the connector.
- Unplug the button circuit board from the motherboard by unlocking the ZIF connector (gently lift the brown lock that keeps the cable in place).
- Pull the connector downwards with the tweezers.

## Step 12



- Remove the 3.0 mm screw on the top of the button memory board using a Phillips #00 screwdriver.
- Remove the 2.8 mm screw on the bottom of the button memory board using a Phillips #00 screwdriver.

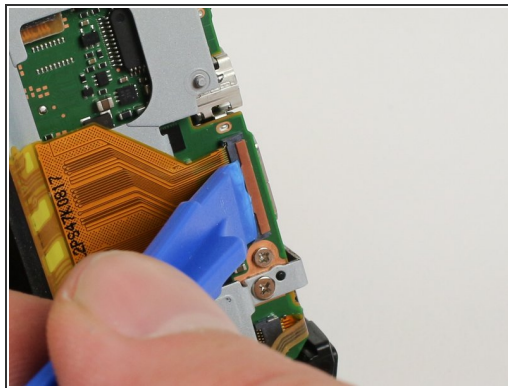
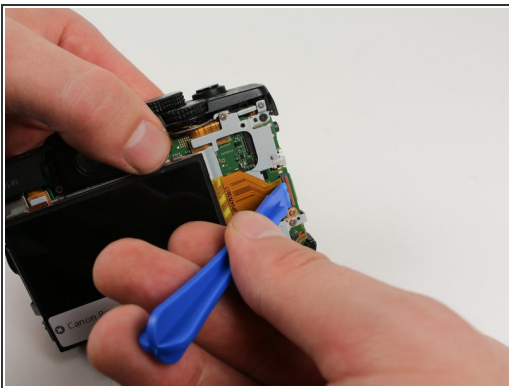


## Step 13



- Lift the button circuit board away from the camera.

## Step 14 — LCD



⚠ Do not pull the connector upwards as doing so may harm the connector housing.

- Unlock the ZIF connector for the large connector ribbon by lifting up on the brown flap with the plastic opening tool.
- Gently pull the connector straight out of the housing with your fingers.

## Step 15



- Unplug the small connector ribbon by pulling the cable outwards from the camera using a spudger or your fingers.

## Step 16



- ⚠ Be careful of the copper plate that may fall out once you lift the LCD screen away.
- Gently lift the LCD away from the camera housing.

To reassemble your device, follow these instructions in reverse order.

This document was generated on 2020-11-28 04:53:21 AM (MST).

