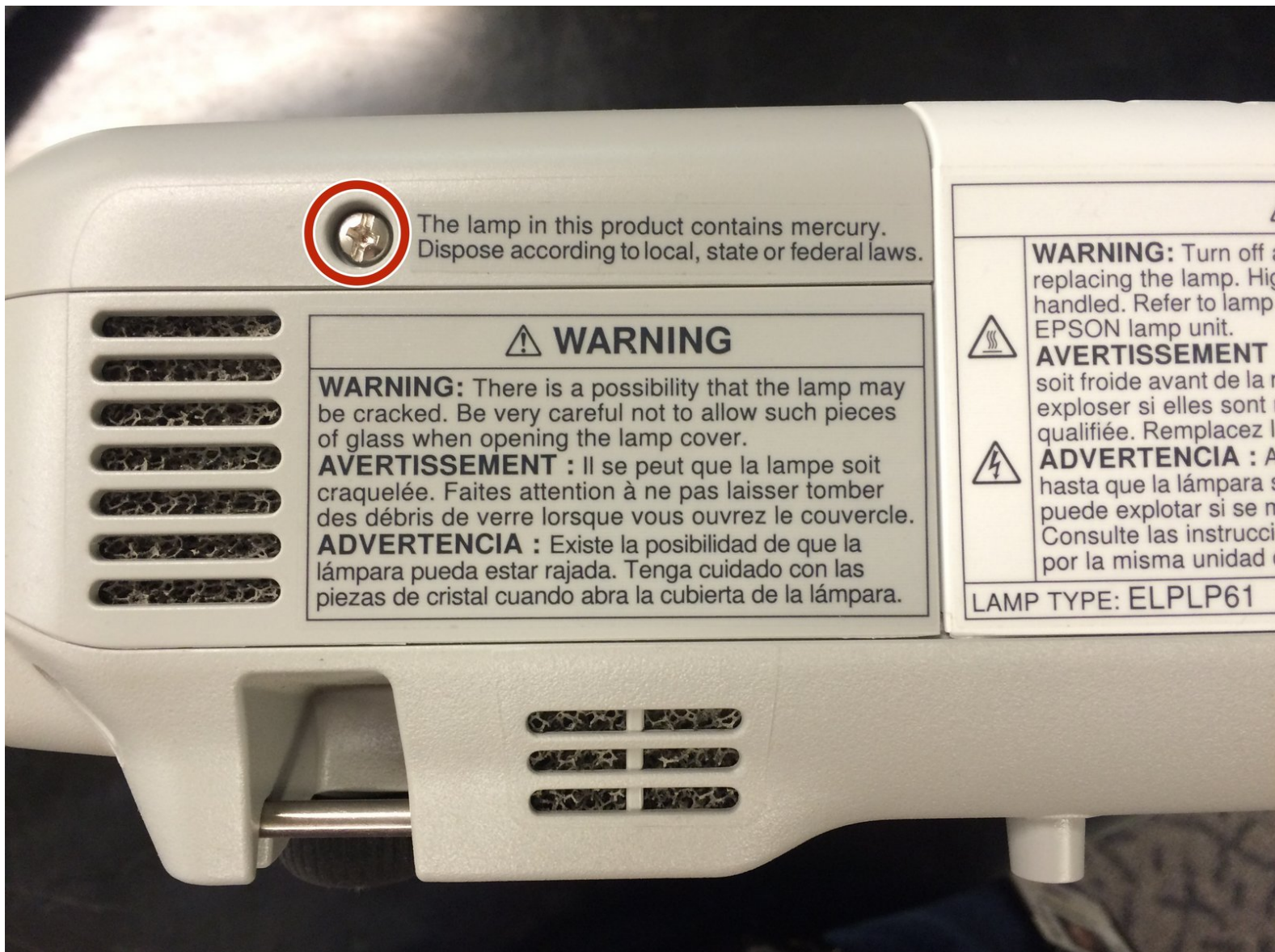




Epson Powerlite 915W Projector Lamp Ballast Replacement

This guide will explain how to replace the lamp ballast on the Epson Powerlite 915w projector.

Written By: Colton



INTRODUCTION

When three red lights start blinking on the LED display of these projectors, it often means the lamp ballast has gone bad. This will show you how to replace the ballast.



TOOLS:

- [Phillips #1 Screwdriver](#) (1)
- [Phillips #2 Screwdriver](#) (1)



PARTS:

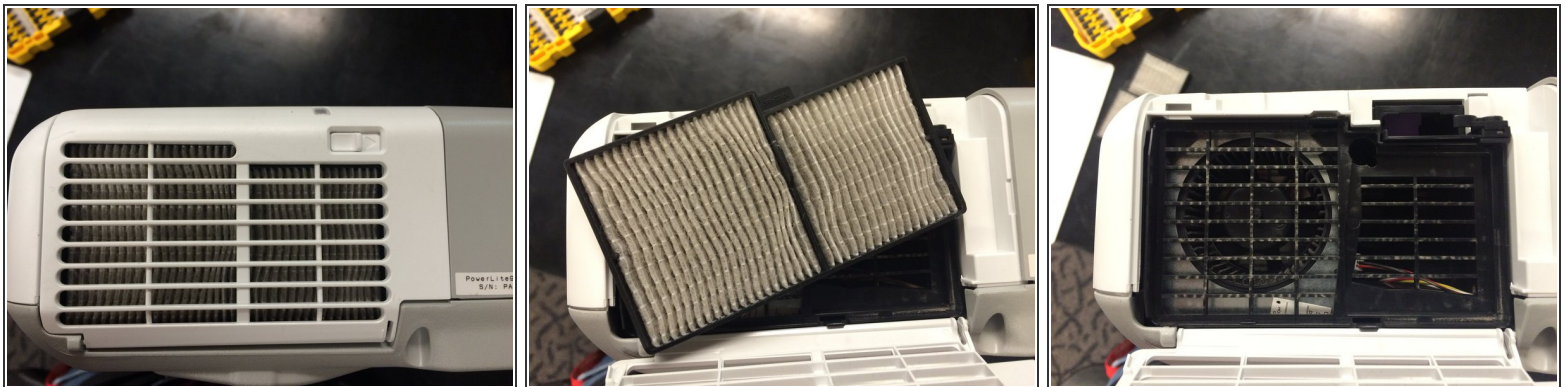
- [Epson Ballast Powerlite Ballast](#) (1)

Step 1 — Remove the bulb



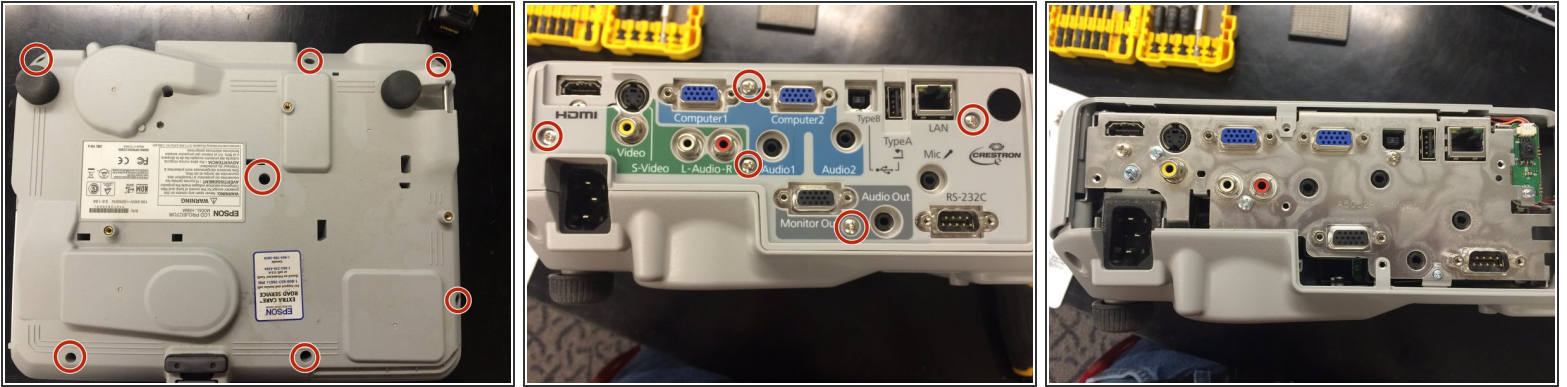
- This is a standard procedure. Take off the cover, loosen the lamp screws and pull the lamp straight out.
- While here, be sure to remove the 2 screws to the right of the lamp.

Step 2 — Removing the Filter



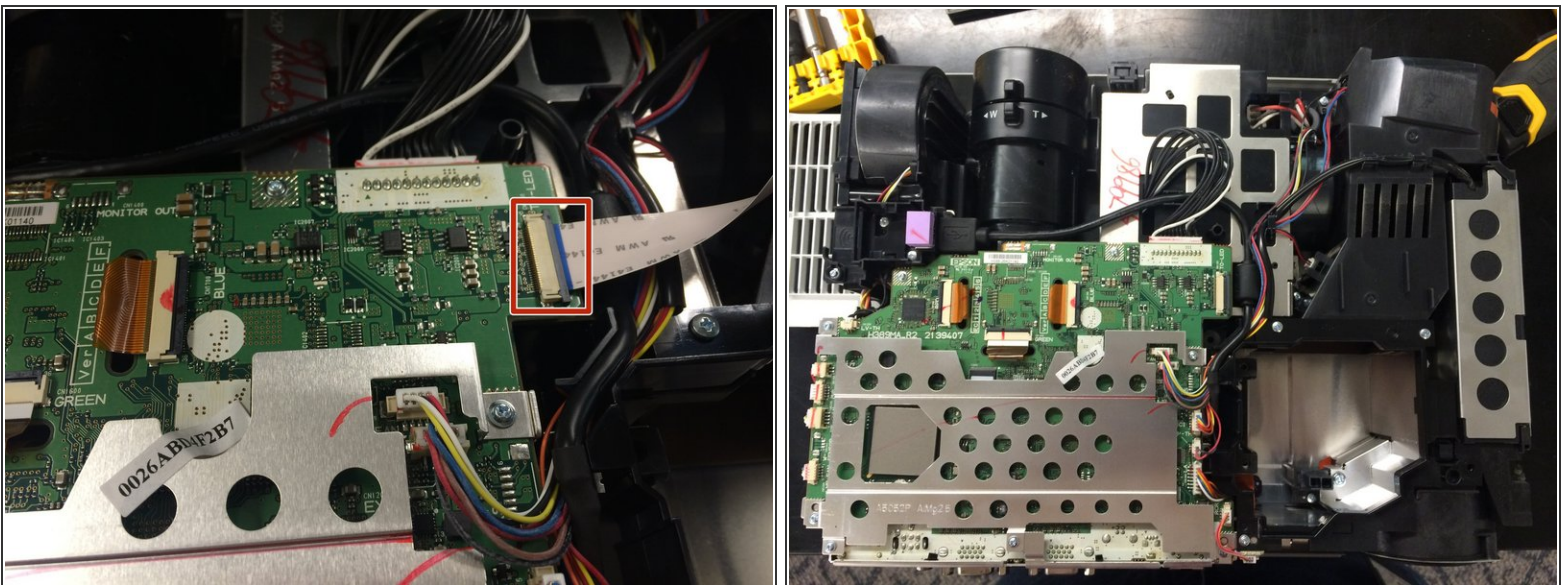
- Slide the notch to the right and then open the filter area.
- Pull the filter straight out.
- Be sure to leave the filter door open as it will hold the projector case closed if it is closed.

Step 3 — Opening the Case



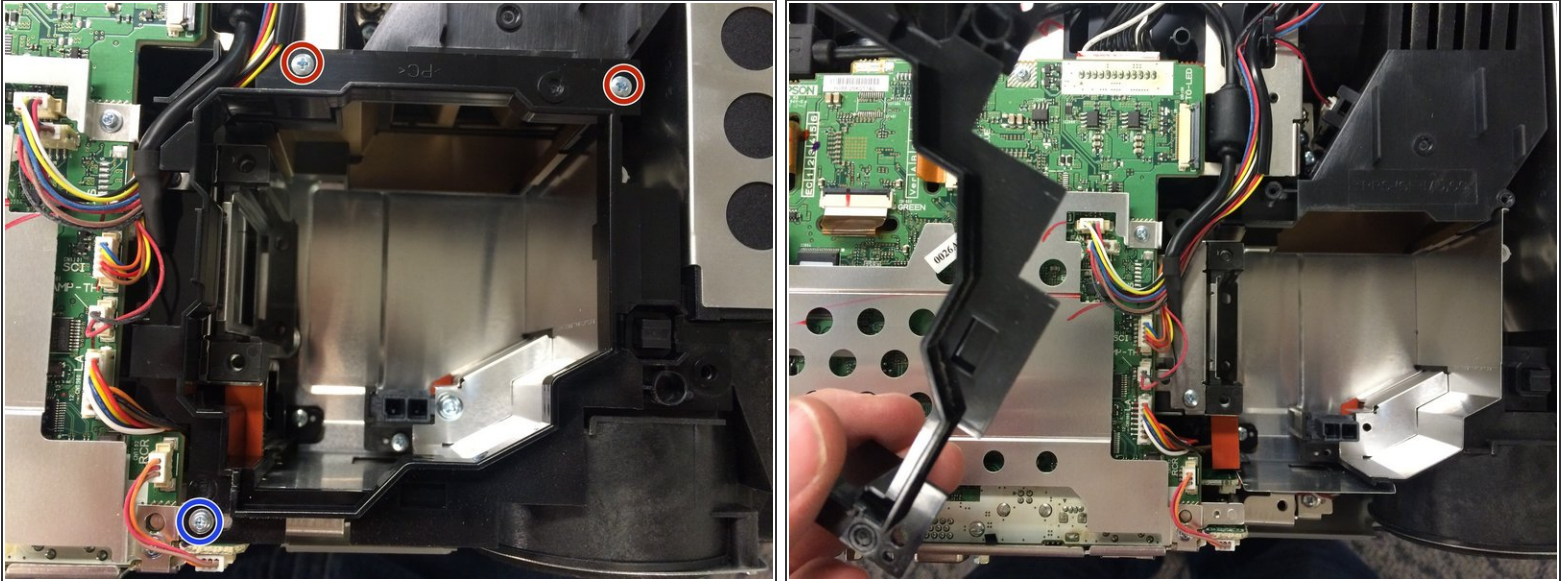
- Remove 7 screws from the bottom. These are all the same size and thread.
- Remove 5 screws from back panel. These are all the same as well (not the same as the ones on the bottom).
- Lift the panel off.
- When reassembling, it helps to save this step for after the top of the case is back together.

Step 4 — Remove the Ribbon Cable



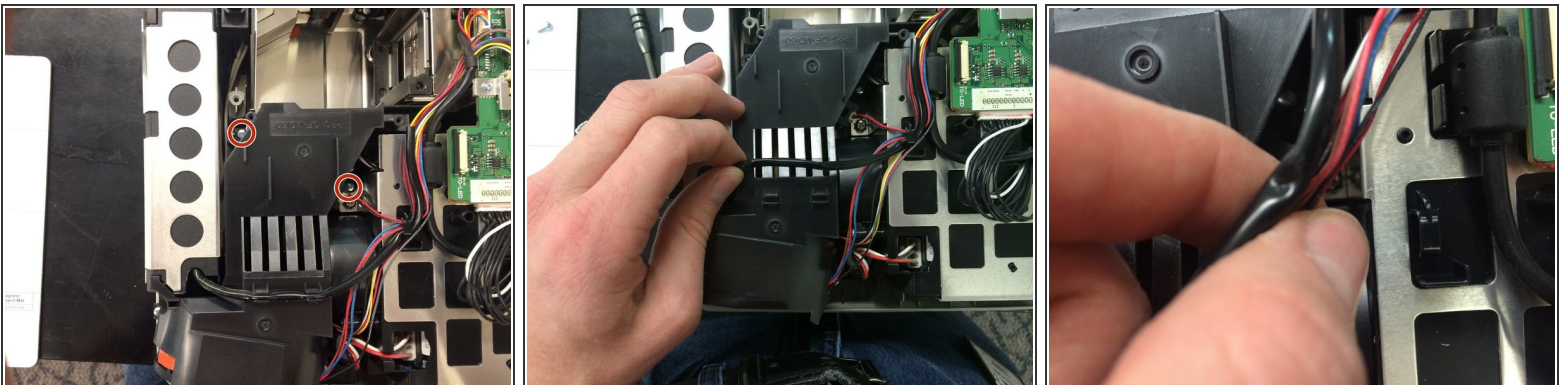
- Disconnect the ribbon cable connected to the LEDs on the outside of the case.

Step 5 — Remove Lamp Area Bezel



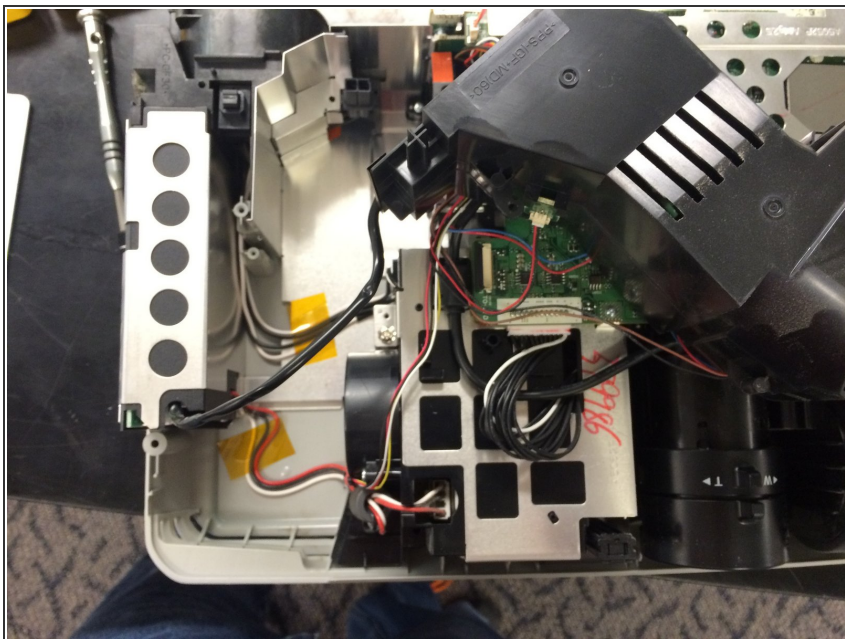
- There are 3 screws in this area that need removed. 2 are the same and then 1 is unique (marked with blue).
- Lift the bezel straight up.

Step 6 — Moving the Fan and Vent



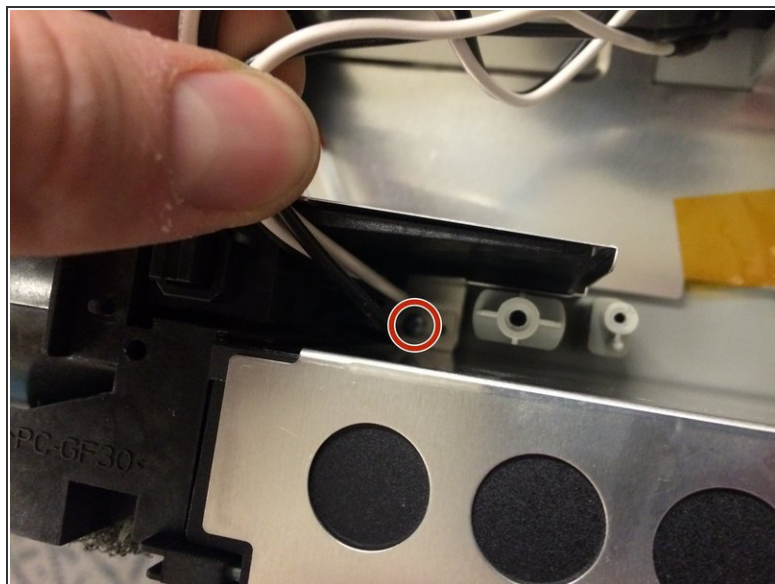
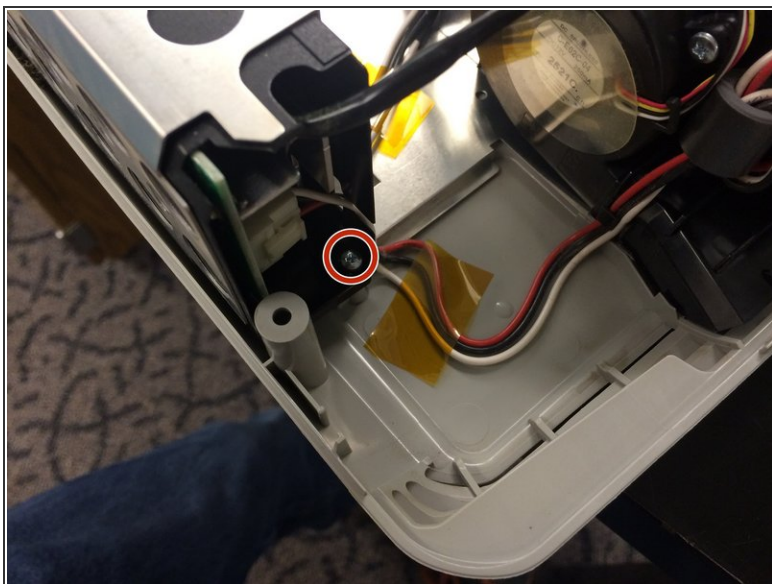
- Remove 2 screws from the vent.
- Pull wires off top of the vent and out of the channel to the side of the vent.
- When you lift the fan, it will all come up as one piece, but still have wires connected. You don't need to remove the whole unit, just move it to the side. You will have to wiggle it out from under the cable that crosses over the top of it.

Step 7 — Set Fan and Vent Assembly to the side



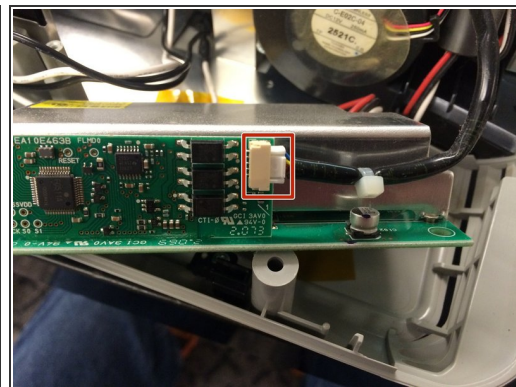
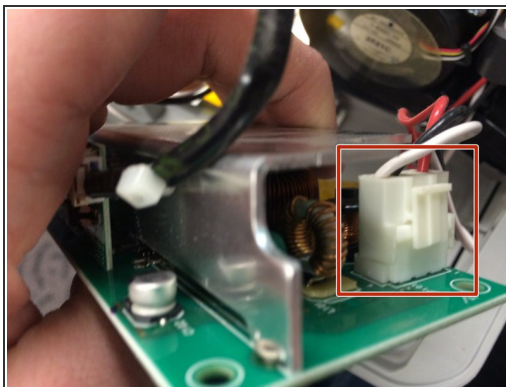
- Move the assembly out of the way.

Step 8 — Unscrew Lamp Ballast



- Remove the 2 screws from the front and back of the lamp ballast holder.

Step 9 — Disconnect the Ballast



- Lift the ballast and holder up in the back and slide it to where the blue plug is visible and then disconnect it.
- Now you can slide the ballast out of the holder and disconnect the remaining 2 connections.

To reassemble your device, follow these instructions in reverse order.