



Sony Xperia E3 Touch Screen Replacement

Sony Xperia E3 - How to disassemble the device...

Written By: ZFix



INTRODUCTION

Sony Xperia E3 - How to disassemble the device and to change the Glass digitizer.

D2202, D2203, D2206, D2243, D2202

[video: <https://www.youtube.com/watch?v=cgfp4qjnBg0>]

TOOLS:

iFixit Opening Picks (Set of 6) (1)

T4 Torx Screwdriver (1)

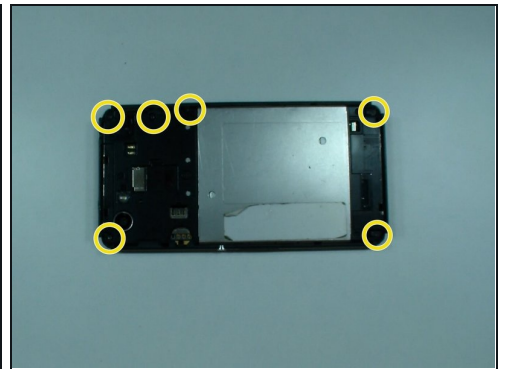
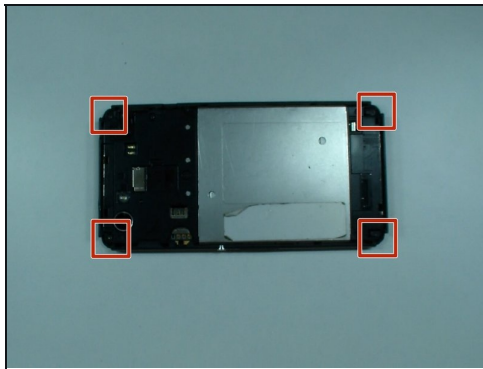
Heat Gun (1)

adhesive tape 3 mm (1)

Plastic Cards (1)

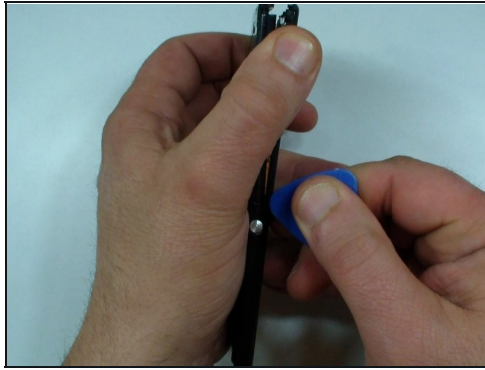
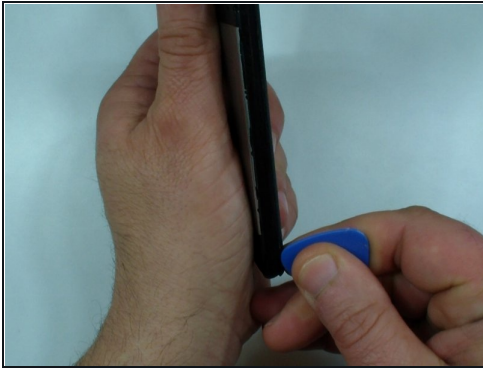
Isopropyl Alcohol (1)

Step 1 — Turn of the Phone



- Turn off the device
- Remove the SIM and the memory cards.
- Remove 4x rubber corners.
- There are 6x black screws Torx T4, remove them.

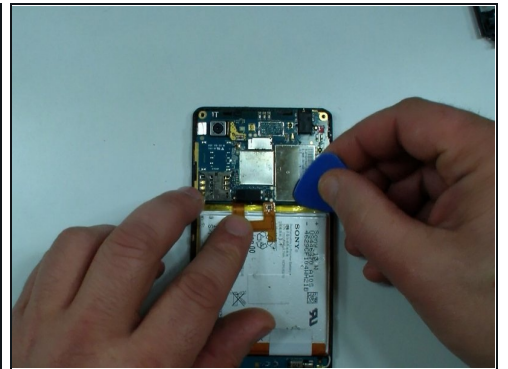
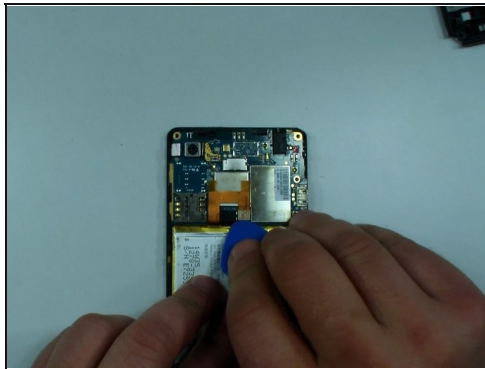
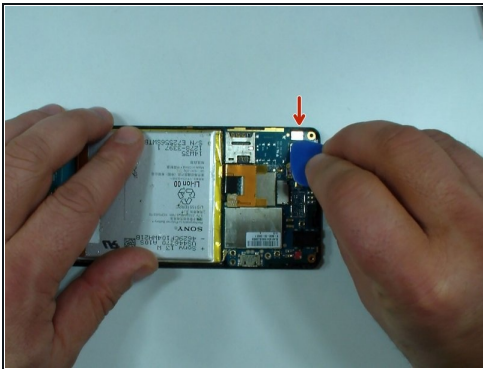
Step 2 — Rear Cover Removal



- Use a plastic tool and separate the rear bezel.

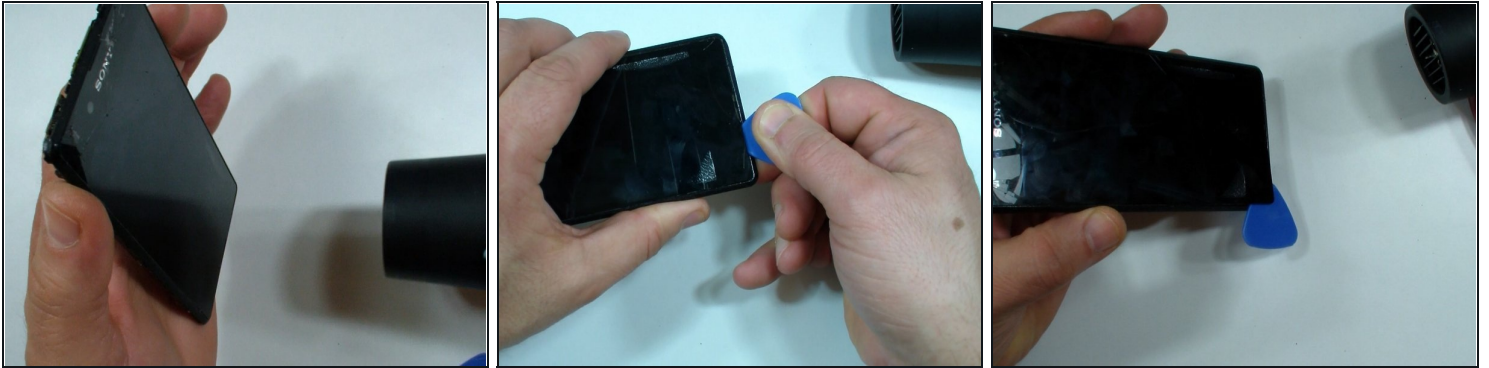
⚠ Be careful for the side buttons.

Step 3 — Touch Screen Flex Cable



- Disconnect the touch screen flex cable.
- Disconnect the battery flex cable.

Step 4



- With a hair dryer or heat gun warm the glass, at first for about 2-3 minutes.
- Use a thin plastic tool, like a plastic pick and start the separation from the underside.

⚠ Do this very slow and periodically warm the glass!

ⓘ At the beginning you have to separate the touch screen glass from the main frame.

Step 5



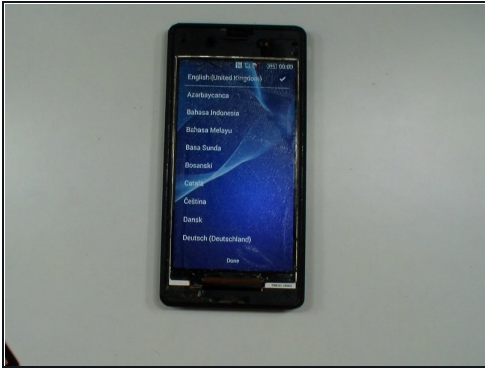
- Now continue with a [plastic card](#).

⚠ AGAIN!!! Very slowly and periodically warm the glass.

⚠ The LCD is thin less than a millimeter!

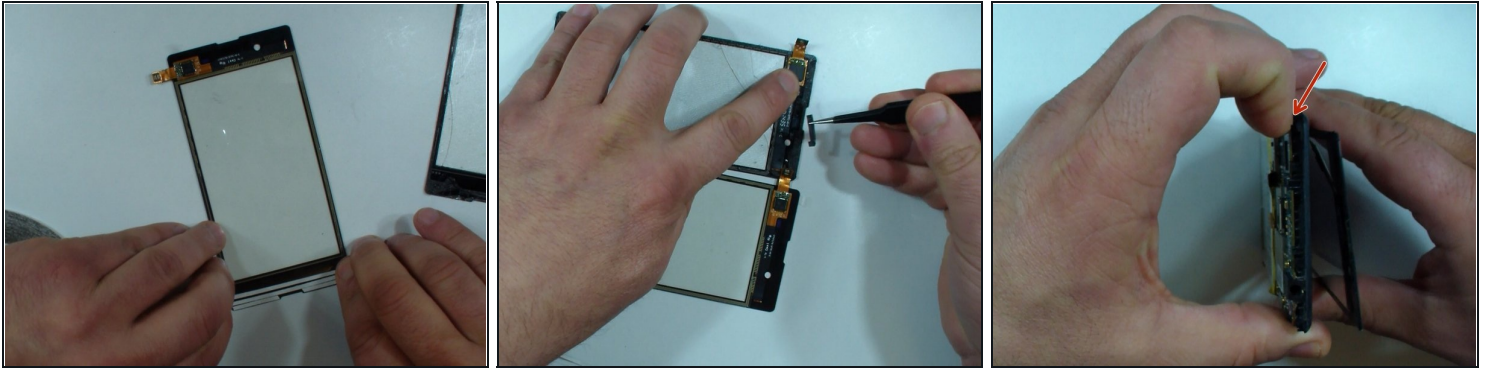
- Remove the touch screen.

Step 6



- Now is time to test the phone.
 - ① If the LCD is OK you can order only a touch screen, if no, then you need display assembly - touch screen & LCD
 - With a plastic pick gently scrape the glue.
 - With a cloth and isopropyl alcohol clean the LCD.
- ⚠ Don't use a lot of alcohol. if the liquid passes behind the LCD, will appear spots that you can't remove.

Step 7



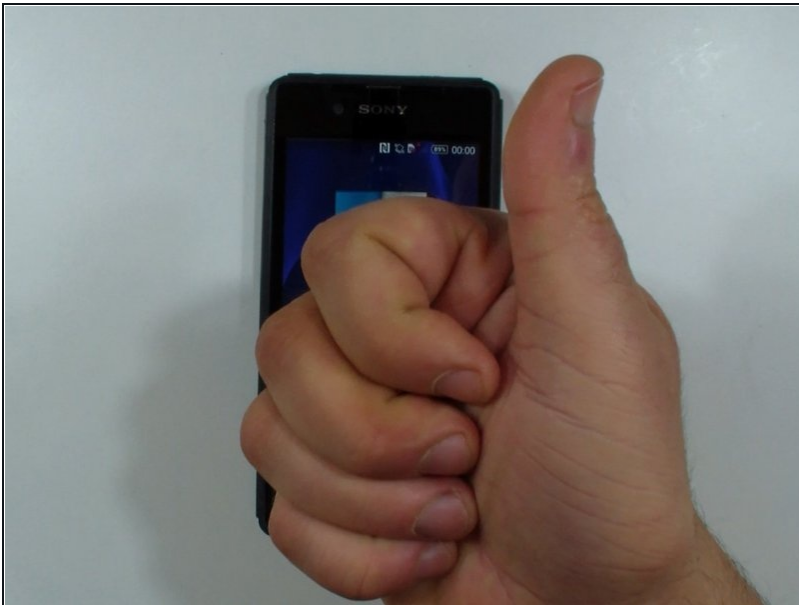
- On the new touch screen or on the main frame put adhesive sticker 3mm.

⚠ Be careful not to cover the the places for the camera, sensor, earpiece, etc.

- Lift the logic board a little bit, so that the touch screen flex cable can pass.

① It's easier if you can order the touch screen together with adhesive which is cut off specifically for model.

Step 8



- Reassemble the device.
- That's all.

To reassemble your device, follow these instructions in reverse order.