



Olympus Pen E-PL7 LCD Screen Replacement

This guide will show you how to remove the LCD from the Olympus Pen E-PL7

Written By: Kelsea Weber



INTRODUCTION

Is your LCD Screen cracked or unresponsive? Use this guide to replace it and get back to taking awesome photos.

We highly suggest you use a [magnetic project mat](#) or an organization tray. This camera has **many** different types of screws and keeping them organized is key to proper reassembly.




TOOLS:

- [Tweezers](#) (1)
 - [Phillips #00 Screwdriver](#) (1)
 - [Magnetic Project Mat](#) (1)
-

Step 1 — Battery



- Turn the camera upside down.
 - Push the grey tab to the right to open the battery compartment.
 - Pull out the battery.
-  The battery is not shown in these photos.

Step 2 — LCD Screen



- Use a Phillips #00 screwdriver to remove the three 2.3 mm screws from the base of the LCD screen.

Step 3



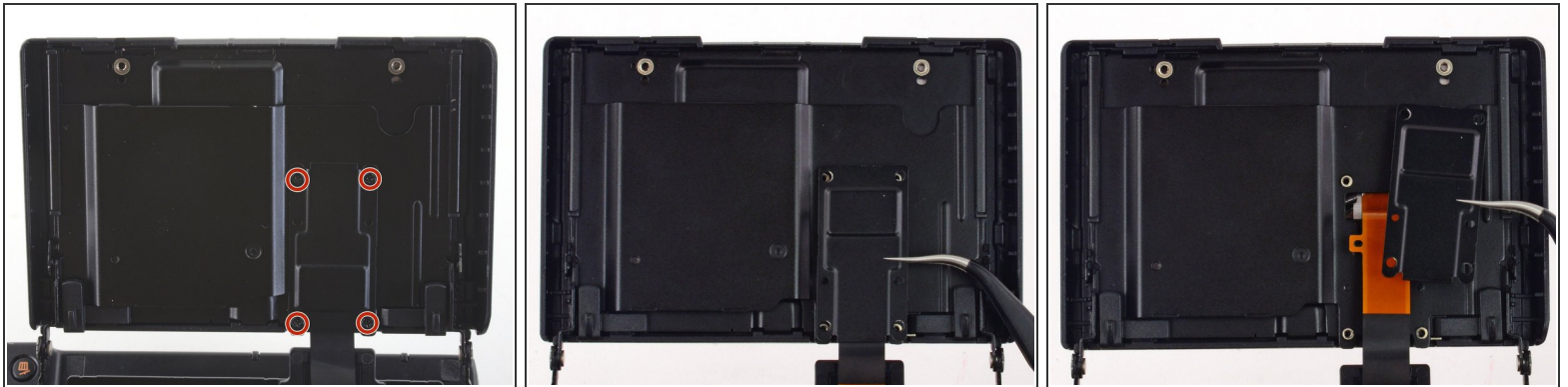
- Fully extend the LCD assembly.

Step 4



- Remove the two 2.2 mm Phillips screws located on the back of the LCD screen.
- Use tweezers to remove the top LCD bracket.

Step 5




- Use a Phillips #00 screwdriver to remove the four 1.4 mm screws from the back of the LCD screen.
- Remove the LCD ribbon cable with a pair of tweezers.
- ⓘ The cover may fall off after the screws have been removed.

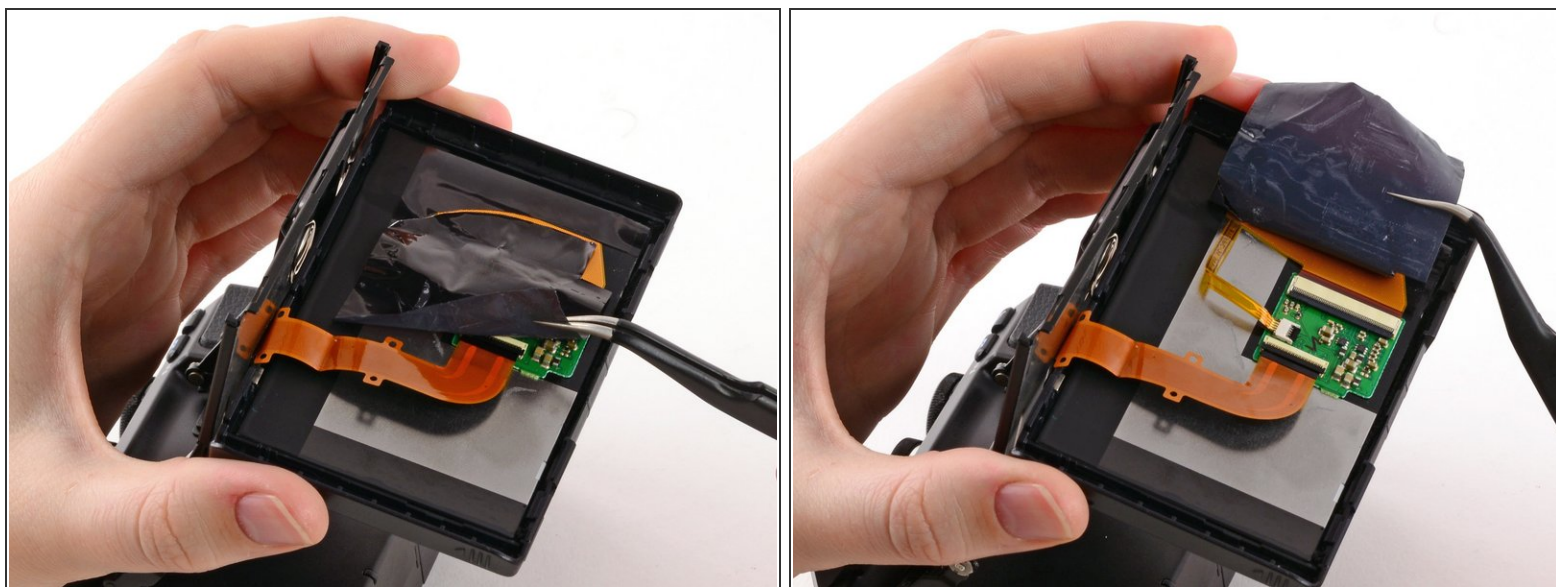
Step 6



- Carefully lift the LCD screen up and away from the assembly.

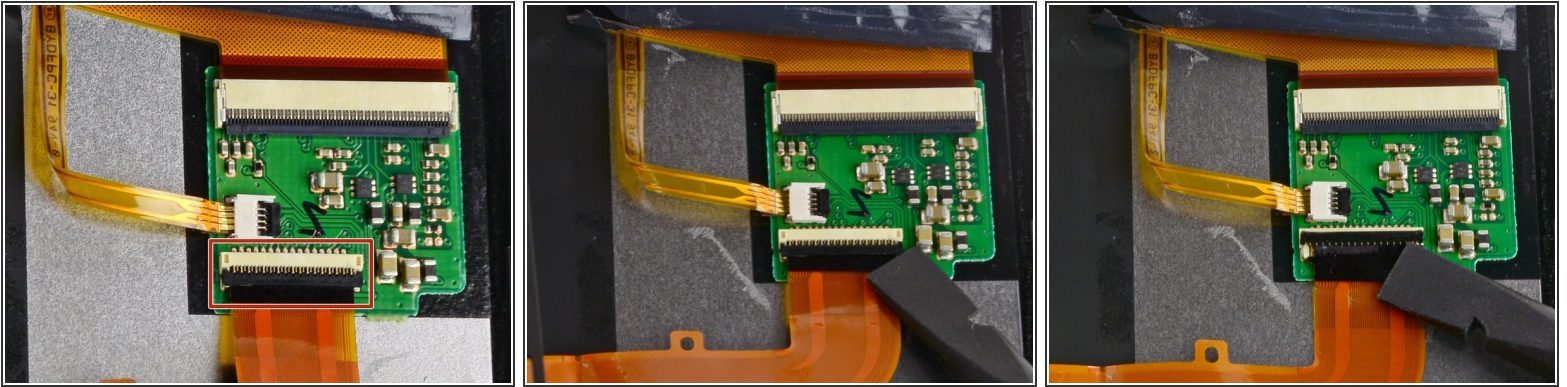
 Do not attempt to fully remove the screen, as it is attached to the assembly by a ribbon cable.

Step 7



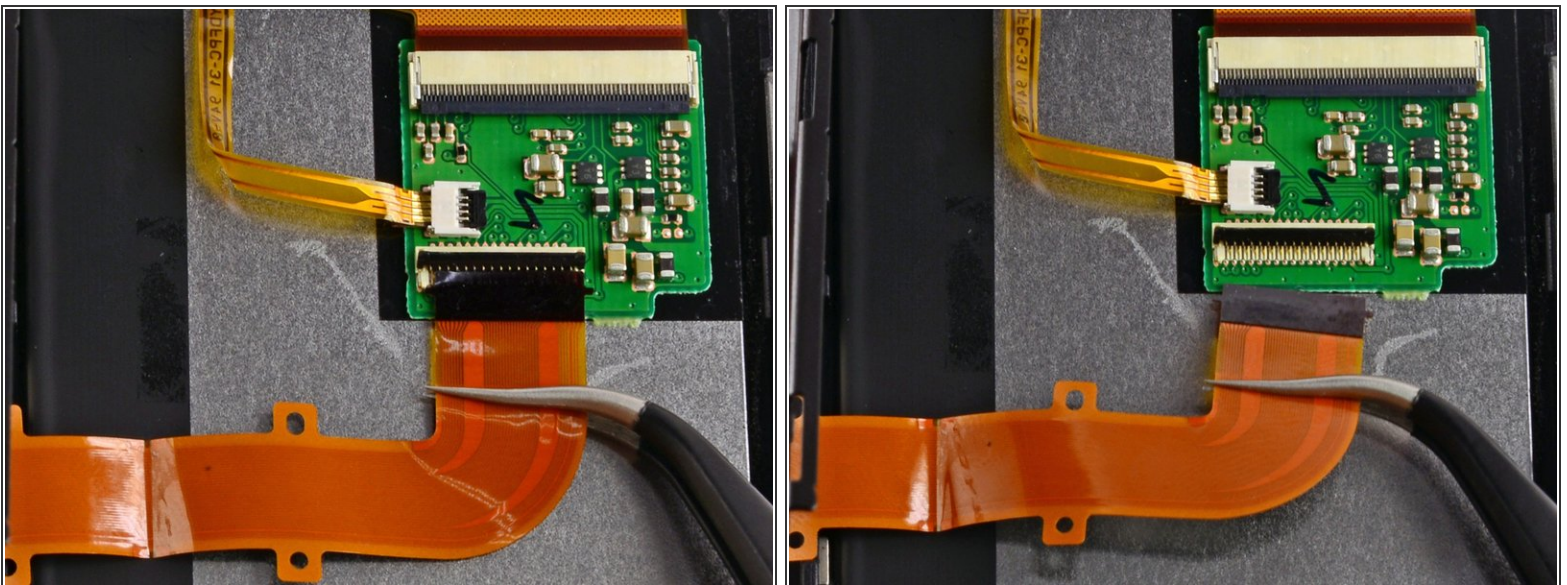
- Use tweezers to peel back the plastic cover.

Step 8



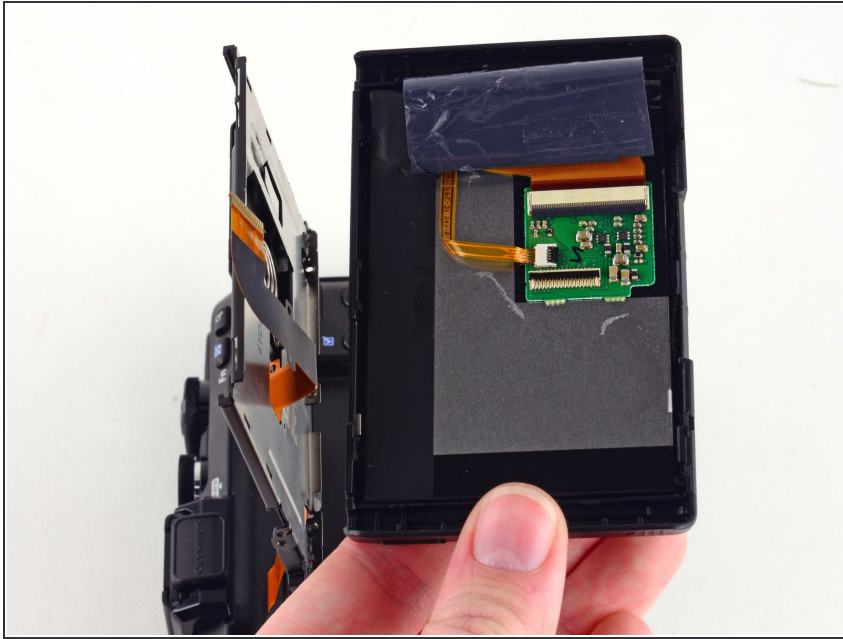
- Use a spudger to flip back the black bar on the LCD Ribbon ZIF connector.

Step 9



- Gently pull the ribbon cable out with tweezers.

Step 10



- Remove the LCD Screen.

To reassemble your device, follow these instructions in reverse order.