



# Sony Xperia E3 Battery Replacement

Sony Xperia E3 Battery Replacement

Written By: ZFix



---

## INTRODUCTION

Sony Xperia E3 - How to disassemble the device and replace the battery.

D2202, D2203, D2206, D2243, D2202

[video: <https://www.youtube.com/watch?v=cgfp4qjnBg0>]

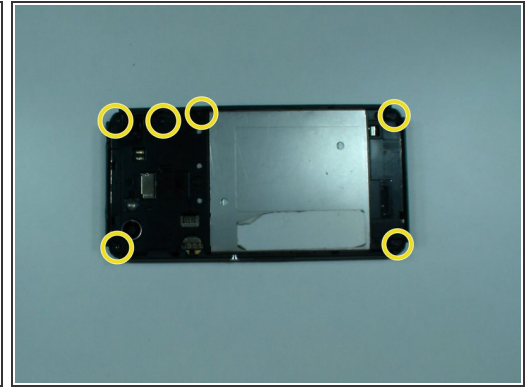
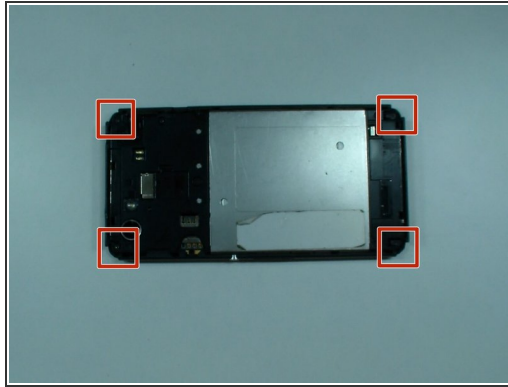
---



### TOOLS:

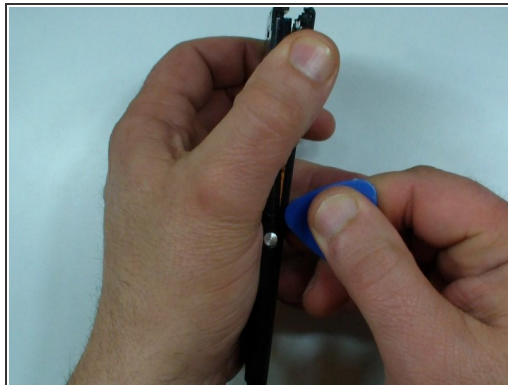
- [iFixit Opening Picks set of 6](#) (1)
  - [T4 Torx Screwdriver](#) (1)
  - [Heat Gun](#) (1)
-

## Step 1 — Turn of the Phone



- Turn off the device
- Remove the SIM and the memory cards.
- Remove 4x rubber corners.
- There are 6x black screws Torx T4, remove them.

## Step 2 — Rear Cover Removal

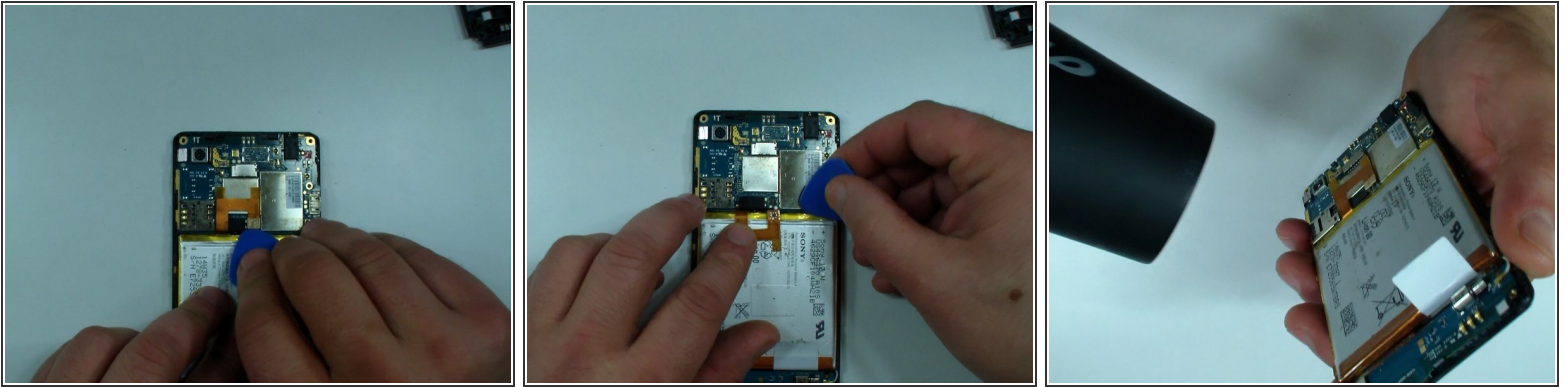


- Use a plastic tool and separate the rear bezel.

⚠ Be careful for the side buttons.

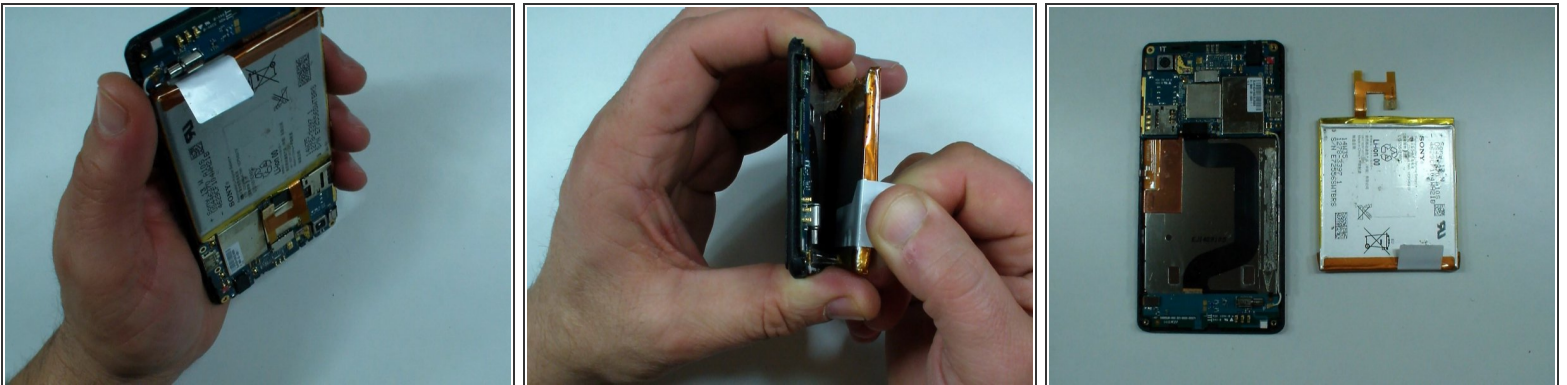


### Step 3 — Battery Ribbon



- Disconnect the battery flex cable.
- Use a Hair dryer and warm little the battery.

### Step 4 — Separating the Battery



- Use the white tape on the battery to separate it from the main frame.
  - **Battery:**
- Li-ion, 2330 mAh
- model: LIS1551ERPC
- The same battery is for Xperia M2 and Xperia M2 Aqua.

To reassemble your device, follow these instructions in reverse order.