



Canon EOS 30 Battery Door Replacement

This fix is safe and only requires a screwdriver.

Written By: Jackie



INTRODUCTION

This fix is safe and only requires a screwdriver.

TOOLS:

[Phillips #00 Screwdriver](#) (1)

Step 1 — Front Panel



- Remove the two 4.8 mm black screws above the lens on the front of the camera.

Step 2



- Remove the 4.3 mm black screw under the lens ring, and the 4.8 mm black screw under the camera.

Step 3



- Remove the 4.8 mm black screw on the left side of the camera.

Step 4



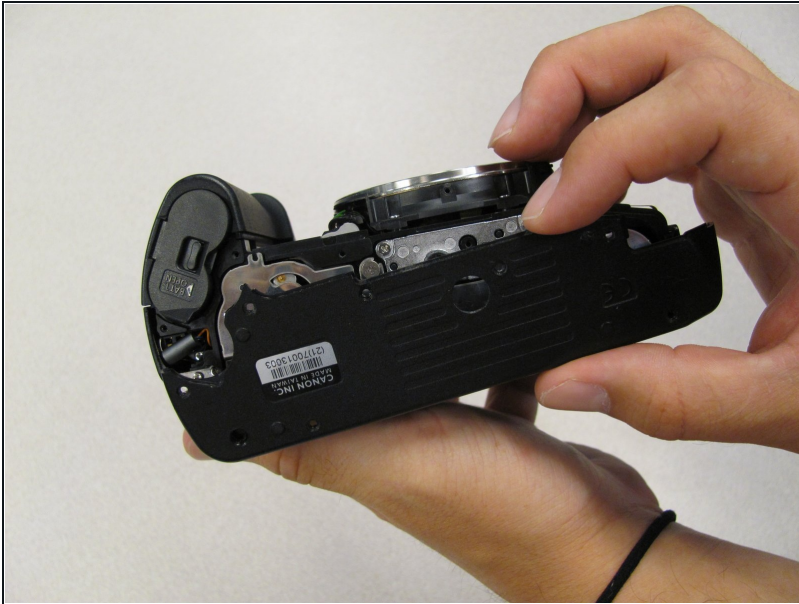
- Remove the front panel by lifting it away from the camera's body.

Step 5 — Bottom Panel



- Remove seven 4.25 mm black screws on the bottom panel.

Step 6



- Remove the bottom panel.

Step 7 — Side Panel With Remote Control Socket



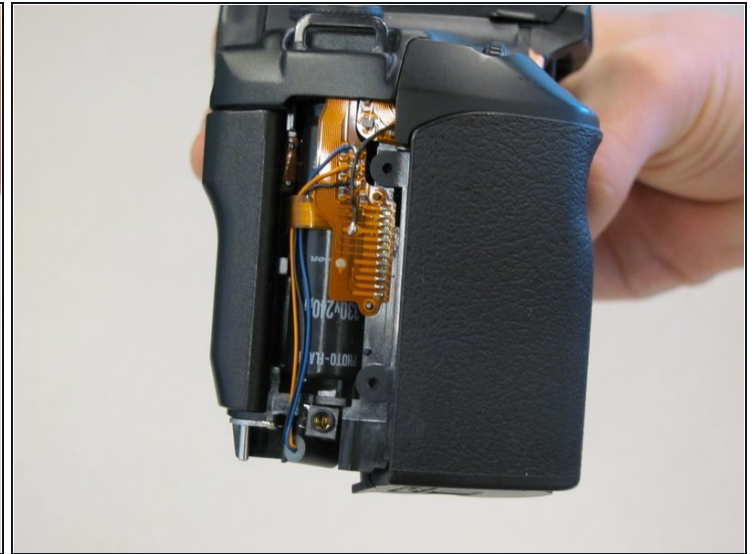
- Remove two 6.5 mm black screws from the panel.

Step 8



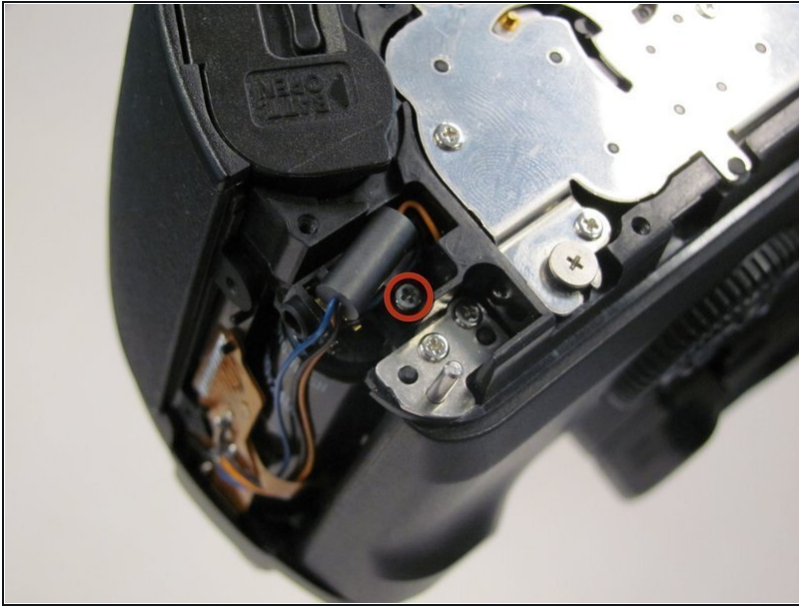
- Remove the plastic remote control socket cap by pulling it straight out.

Step 9



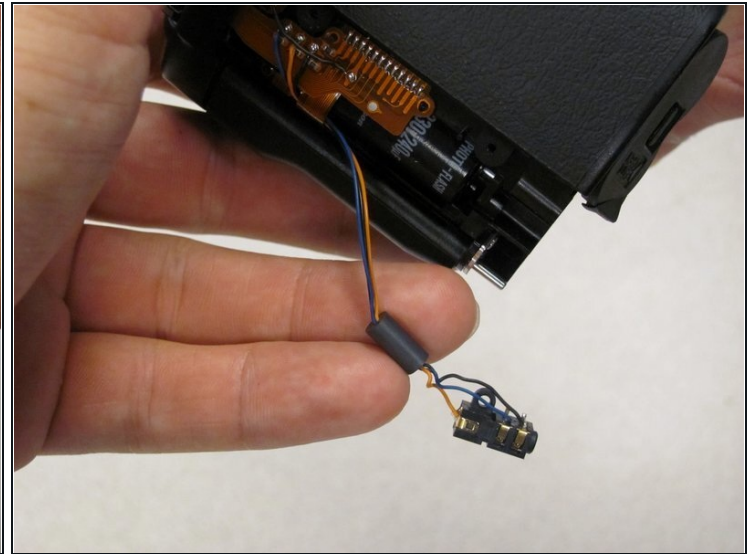
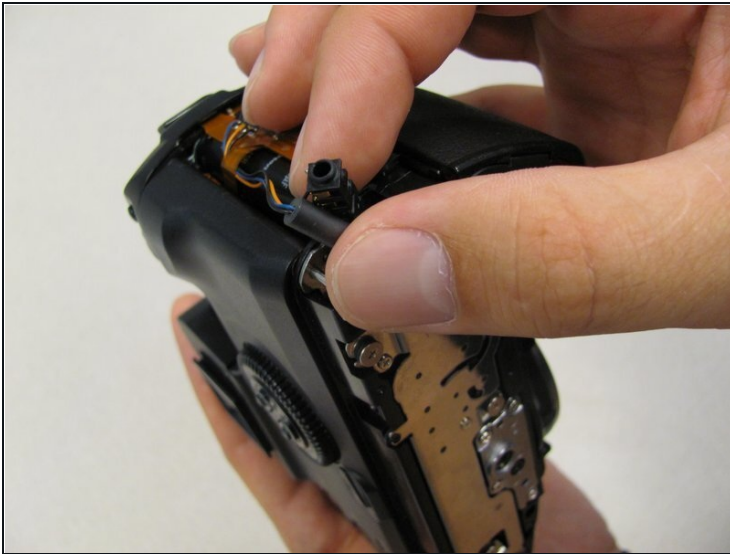
- Slide the panel toward the bottom of the camera to remove.

Step 10



- Remove the single 4.8 silver screw from the control socket.

Step 11



① The control socket is now secure by three wires.

- [Desolder](#) connections to replace the remote control socket.

Step 12 — Top Panel



- Slide the outer eyepiece upward to remove it.

Step 13



- Remove the two 4.75 mm black screws located on the top of the camera.

Step 14



- Remove the four 4.3 mm black screws near the bottom corners of the eyepiece at the back of the camera.

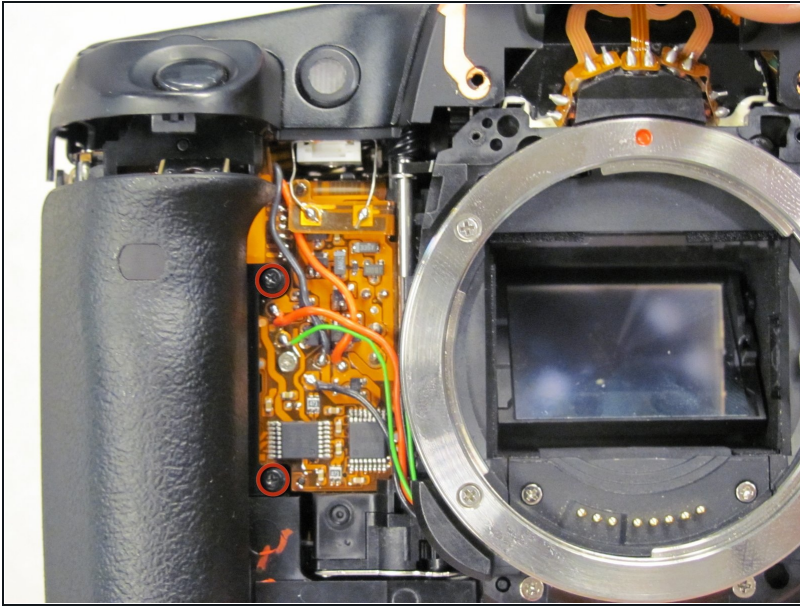
Step 15



- Slowly separate the top panel from the camera by pushing it upward.

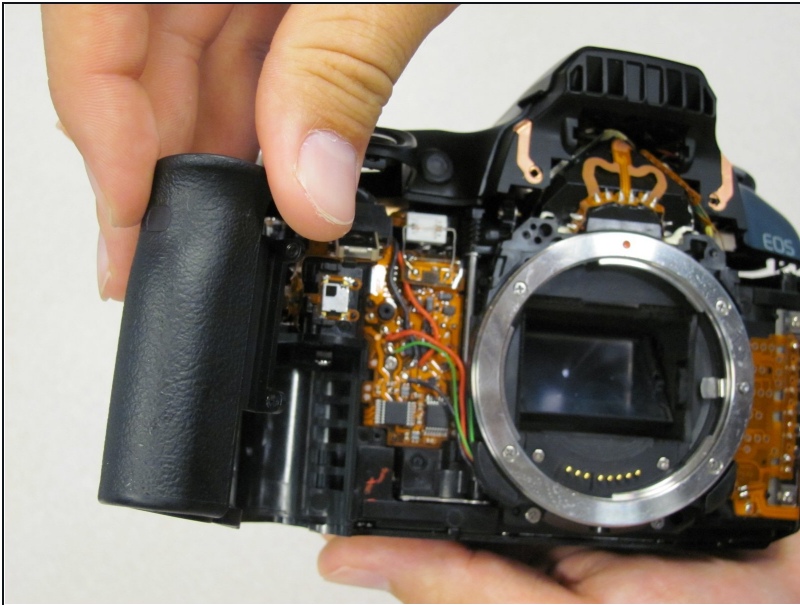
⚠ Separating the top panel too far or quickly can damage the ribbon cable and connecting wires that are still attached to the top panel of the camera.

Step 16 — Grip



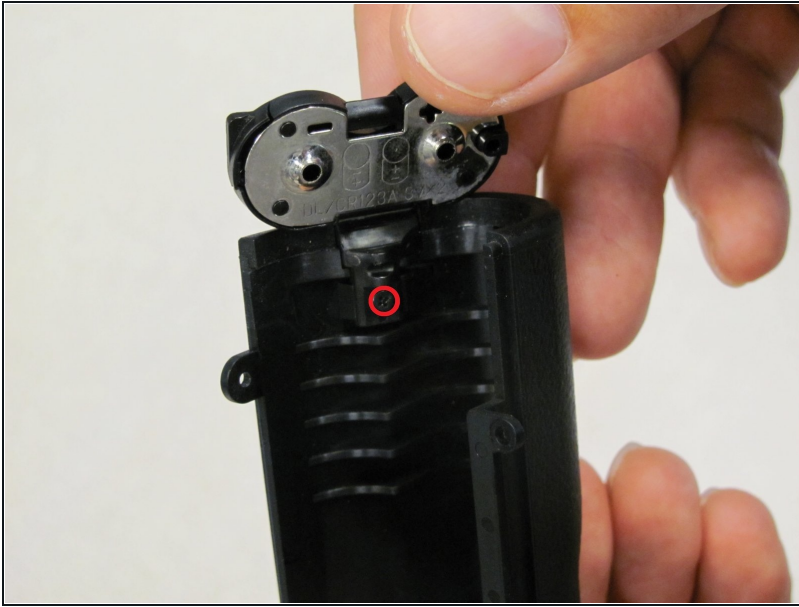
- Remove the two 5.5 mm screws from front of camera.

Step 17



- Remove grip panel.

Step 18 — Battery Door



- Remove one black screw from battery door on underside of grip.

Step 19



- Remove battery door.

To reassemble your device, follow these instructions in reverse order.