



# Macintosh Quadra 610 Teardown

Written By: DominoRider2431



## INTRODUCTION

In this guide, we will be taking apart a Macintosh Centris 610, which is basically the same as a Quadra 610.

First, let's take a look at the specs of this computer:

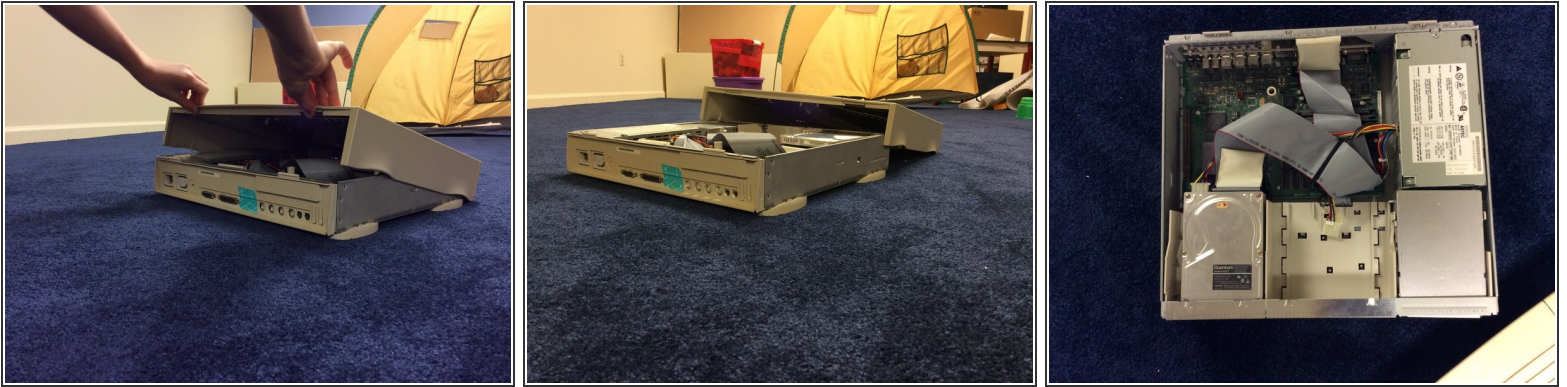
- Centris 610
- 80 MB hard drive
- 32 MB RAM
- 512 KB VRAM



### TOOLS:

- [Phillips #1 Screwdriver](#) (1)
  - [T10 Torx Screwdriver](#) (1)
-

## Step 1 — Top Cover



- To start, lift the two tabs on the back of the computer and take the cover off.

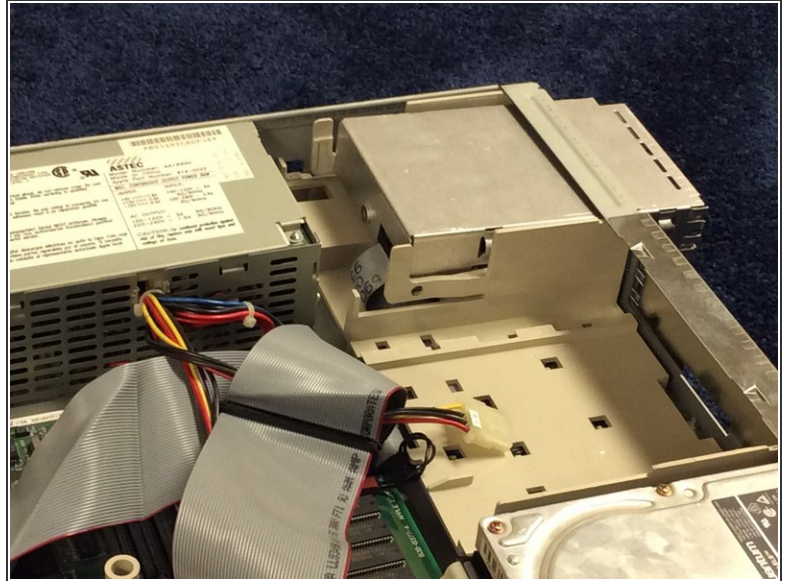
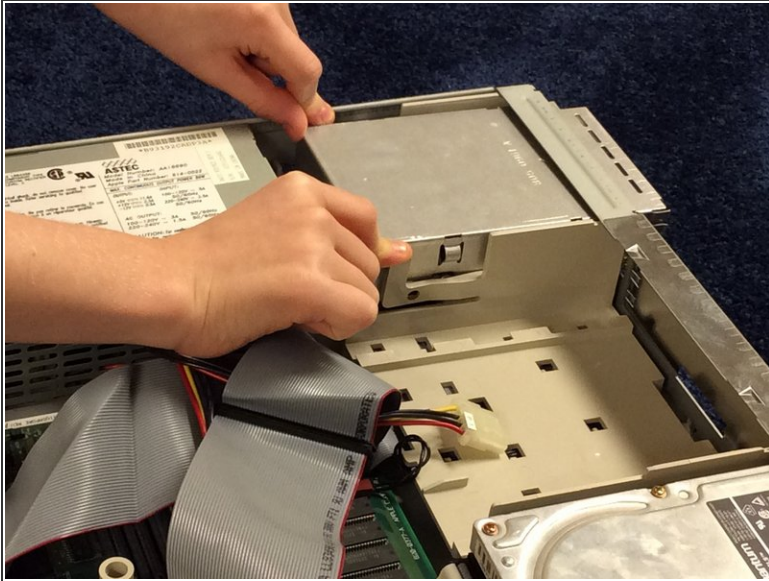
## Step 2 — Power Supply



- Unscrew the screw holding the power supply in place with the [#1 Phillips screwdriver](#).

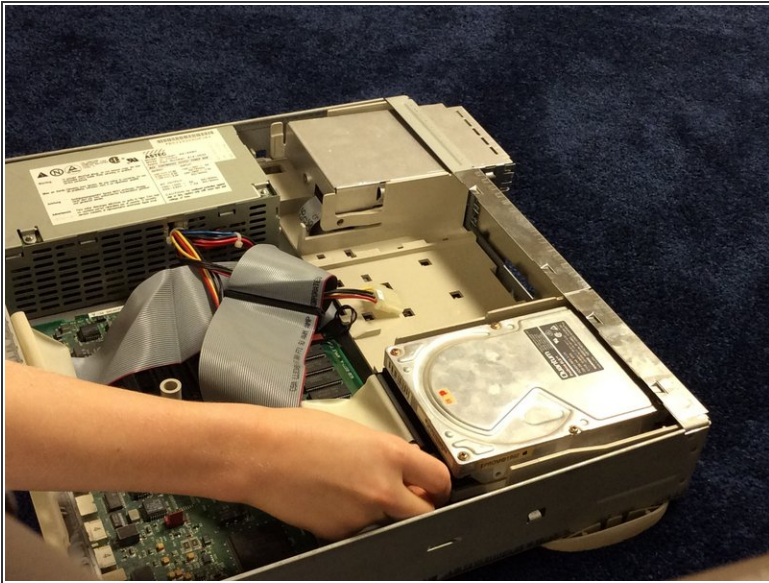


## Step 3



- To gain better access to the power supply, push the two tabs securing the floppy drive out and slide the floppy drive forward a few inches.
- ⓘ If you have a CD-ROM drive installed in the Mac, disconnect the SCSI ribbon cable, the CD-ROM power supply cable, and the CD-ROM audio cable. Remove the EMI shield in the front of the CD-ROM drive also.

## Step 4

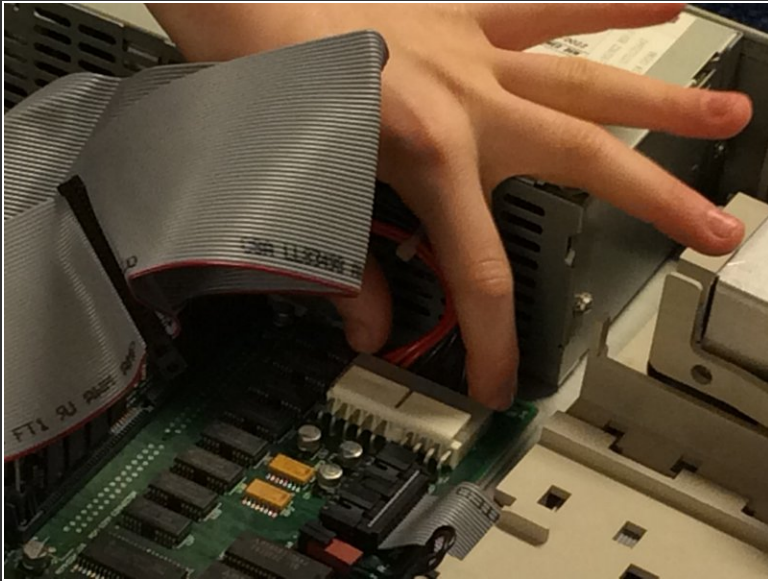


- Grab the power connector for the hard drive and take it out of the hard drive.

⚠ Make sure that you grab the connector, and not the wires, or you will risk damage to the connection.



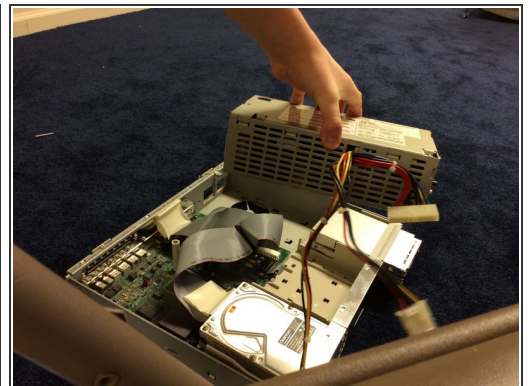
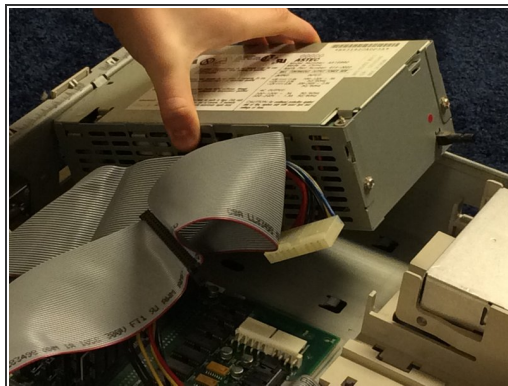
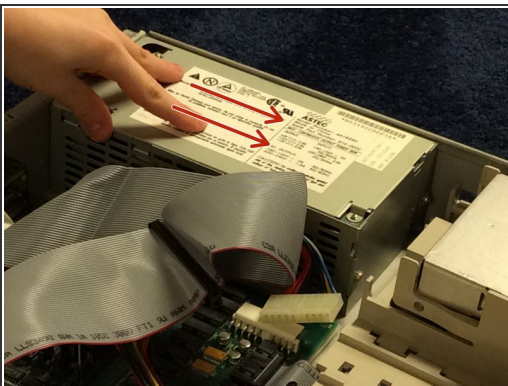
## Step 5



- Grab the main power connector that is connected to the motherboard and pull gradually and firmly toward the power supply.

⚠ Make sure that you grab the connector, and not the wires, or you will risk damage to the connection.

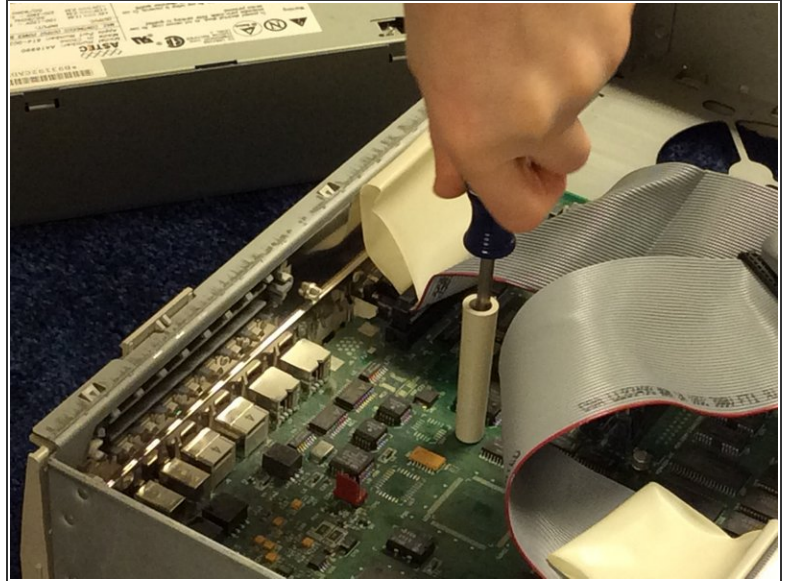
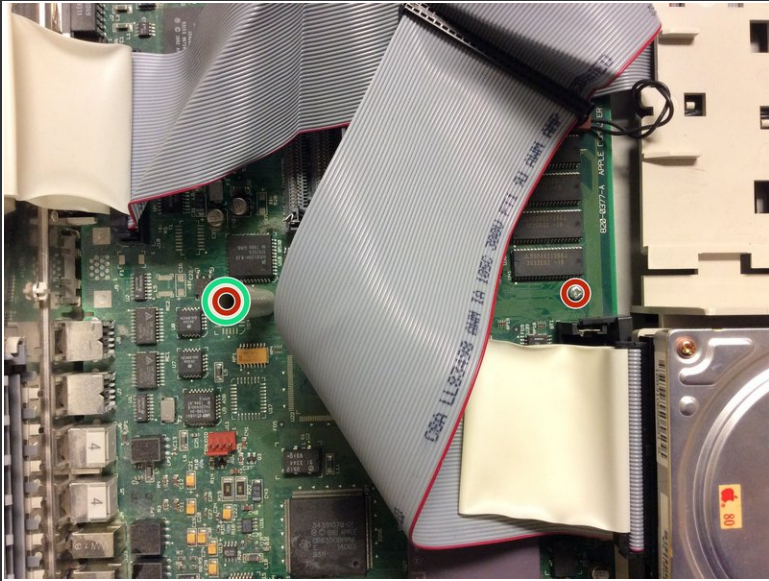
## Step 6



- Push the power supply toward the front of the computer, lift up the side of the power supply closest to the floppy drive, and take the power supply out of the Mac.

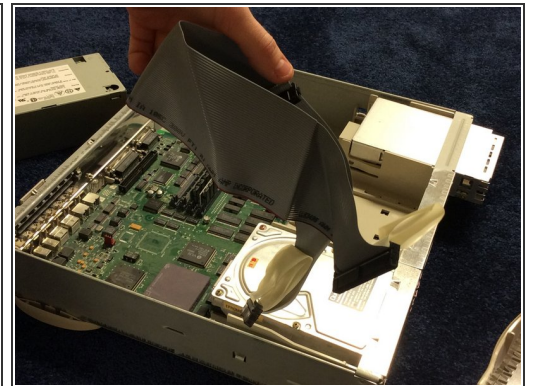
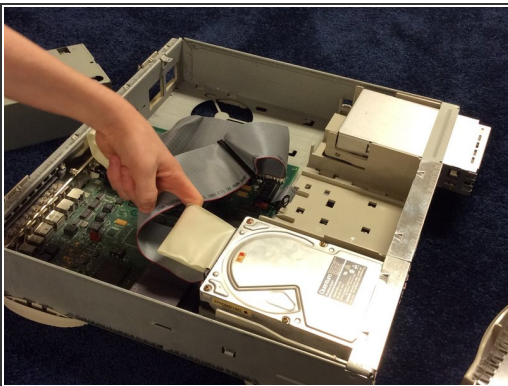


## Step 7 — Motherboard



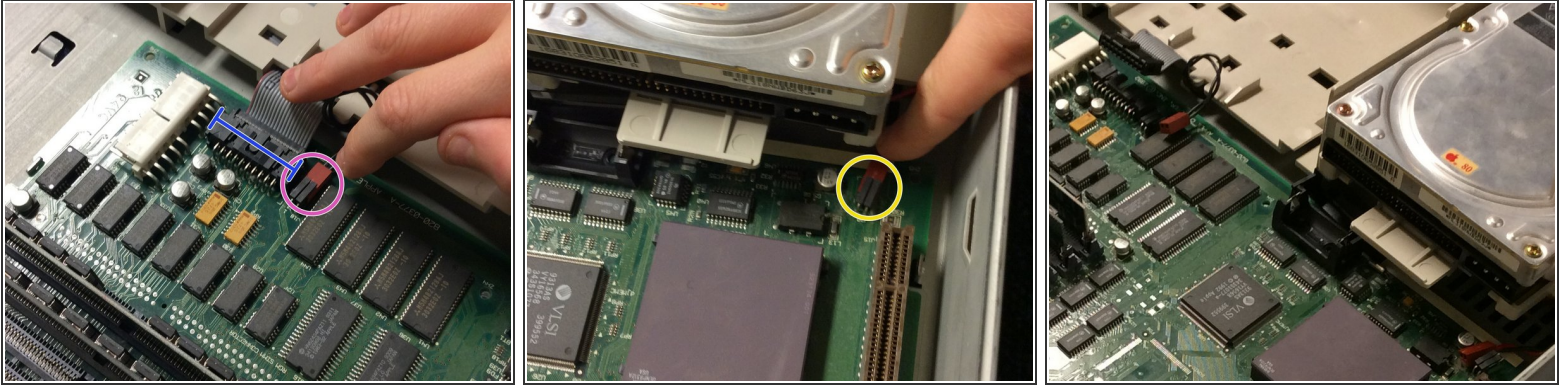
- Remove the two screws with the [Phillips #1 screwdriver](#).
- Remove the standoff.

## Step 8



- Take out the SCSI ribbon cable, using the provided straps connected to the cable to pull it out.
- ⚠ Do not pull on the cable itself, or you will risk damage to the connection.

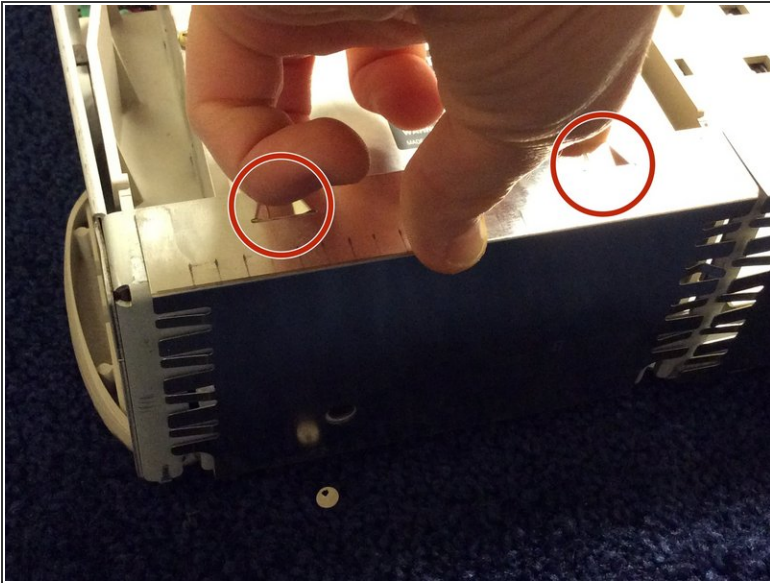
## Step 9



- Remove the floppy drive cable from the motherboard. It may be necessary to lift up the edge of the motherboard to make it easier to remove the connector.
  - Remove the speaker cable from the motherboard.
  - Remove the LED cable from the motherboard.
- ⚠ Make sure to pull only on the connector, and not the wires, or you will risk damage to the connection.
- ⓘ If you have a CD-ROM drive installed in the Mac, remove the CD-ROM audio cable from the motherboard.

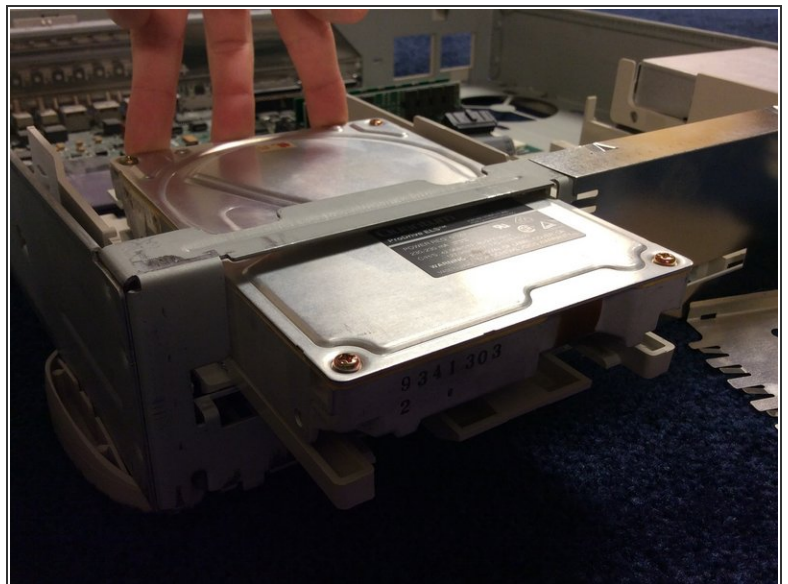
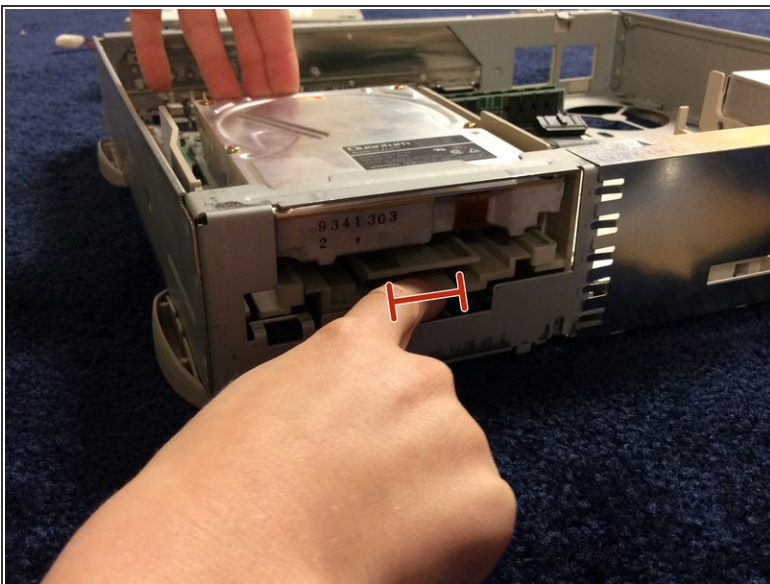


## Step 10



- Push up on the two tabs for the EMI shield, and fold it down.

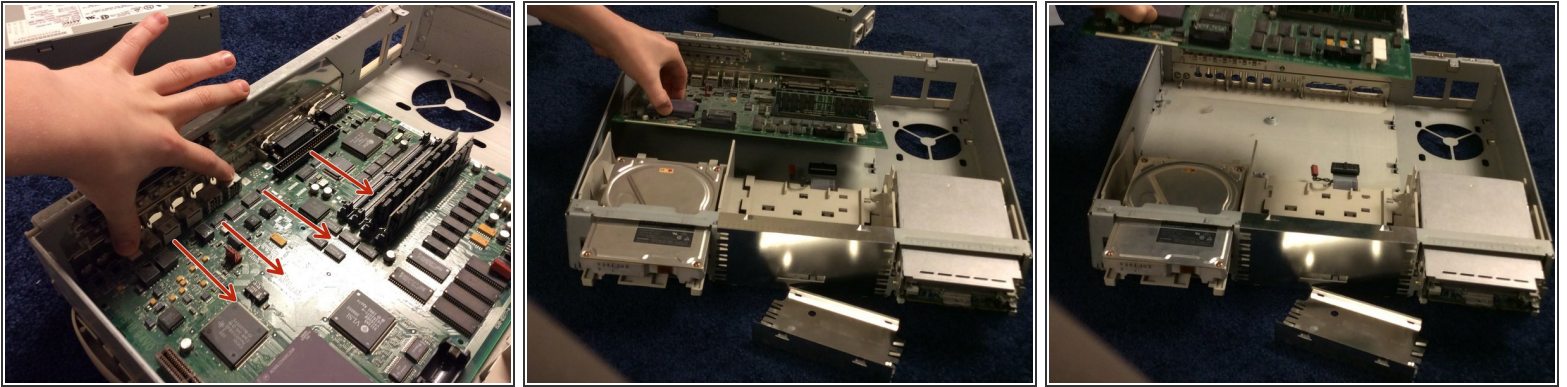
## Step 11



- Push down on the tab marked, and push the hard drive forward a few inches.
- ⓘ If you have a CD-ROM drive installed in the Mac, push up on the tab in the front of the computer, and slide the CD-ROM drive forward a few inches.

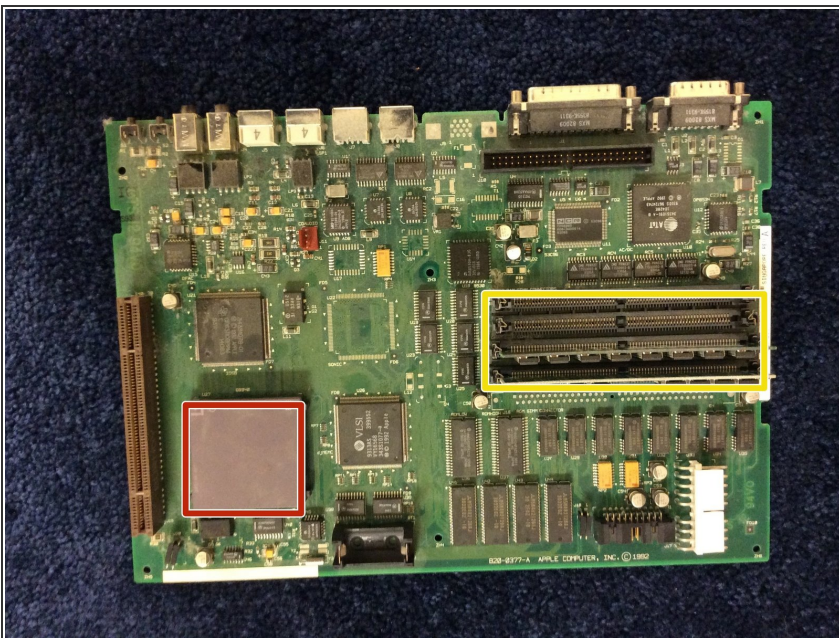


## Step 12



- Slide the motherboard forward, and lift it out of the Mac.

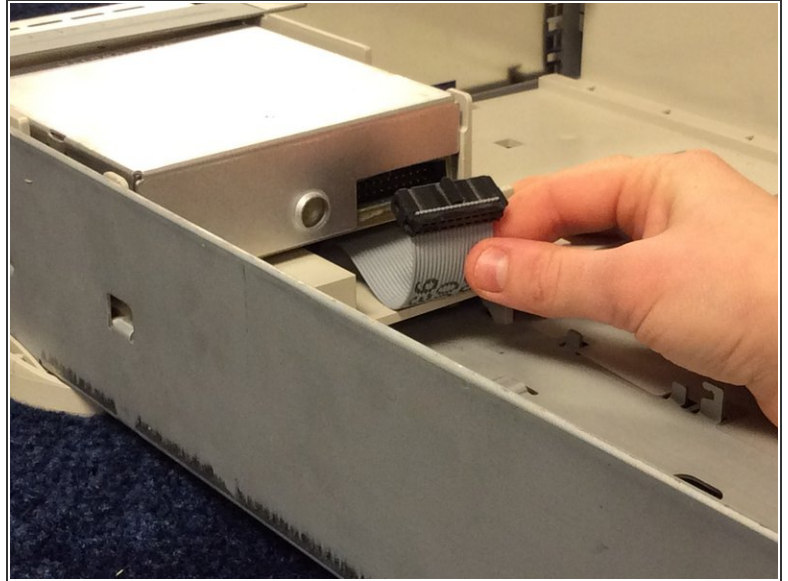
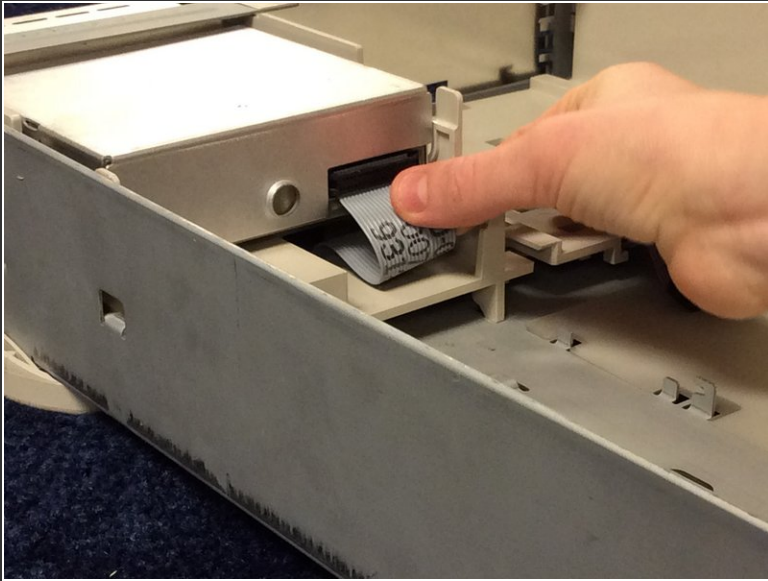
## Step 13



- Let's take a look at the internal components:
- 20 MHz Motorola 68LC040
- 32 MB RAM, expandable to 68 MB.



## Step 14 — Floppy Drive



- Disconnect the floppy cable from the drive, pulling on the cable.

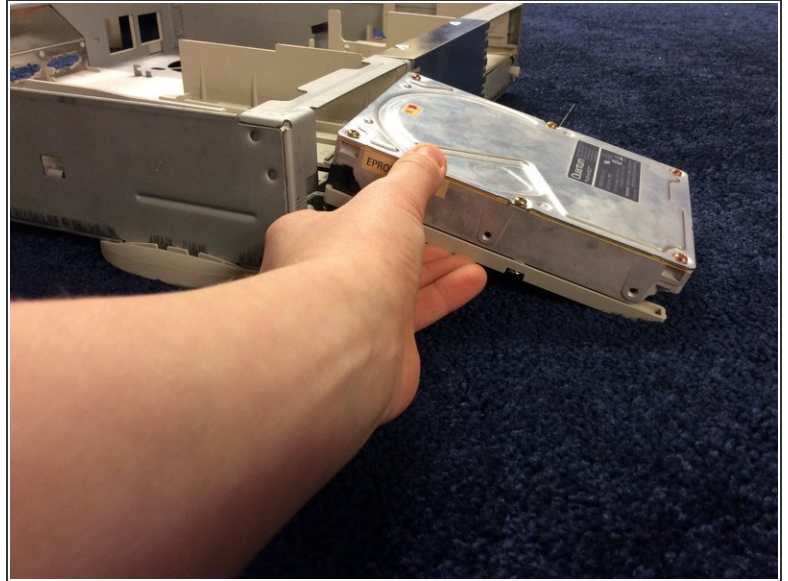
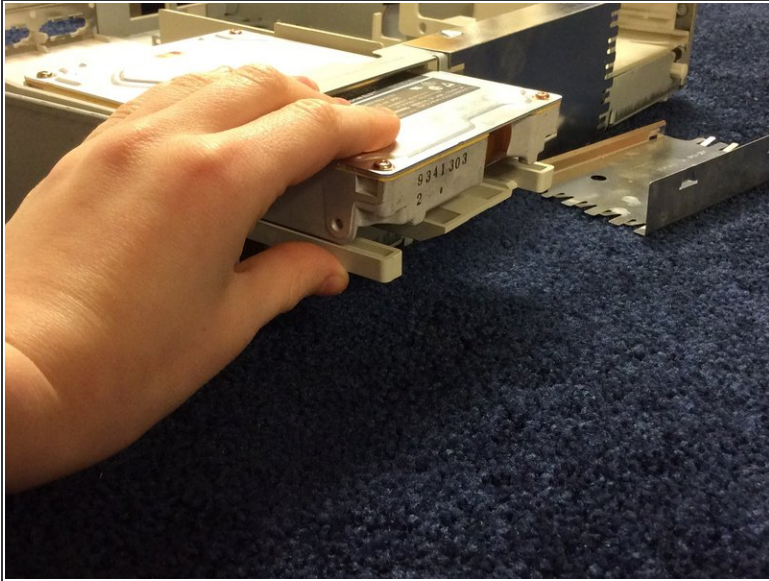
⚠ It's okay to pull on the cable this time, but only do it with gradual force, don't just yank it out.

## Step 15



- Push the floppy drive out of the Mac.

## Step 16 — Hard Drive



- Take the hard drive, and pull it out the front of the Mac.

## Step 17 — CD-ROM Drive (If Installed)

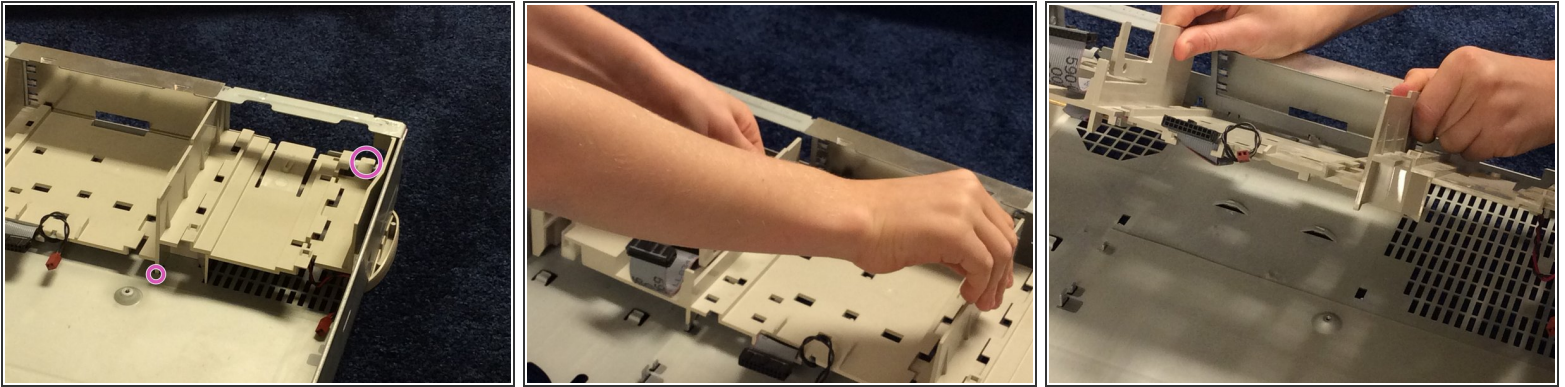


**i** If you don't have a CD-ROM drive installed in your Mac, skip ahead to Step 18.

- Push the CD-ROM drive out of the computer (I don't have a CD-ROM drive installed in mine, so I can't give you any pictures. Sorry!).

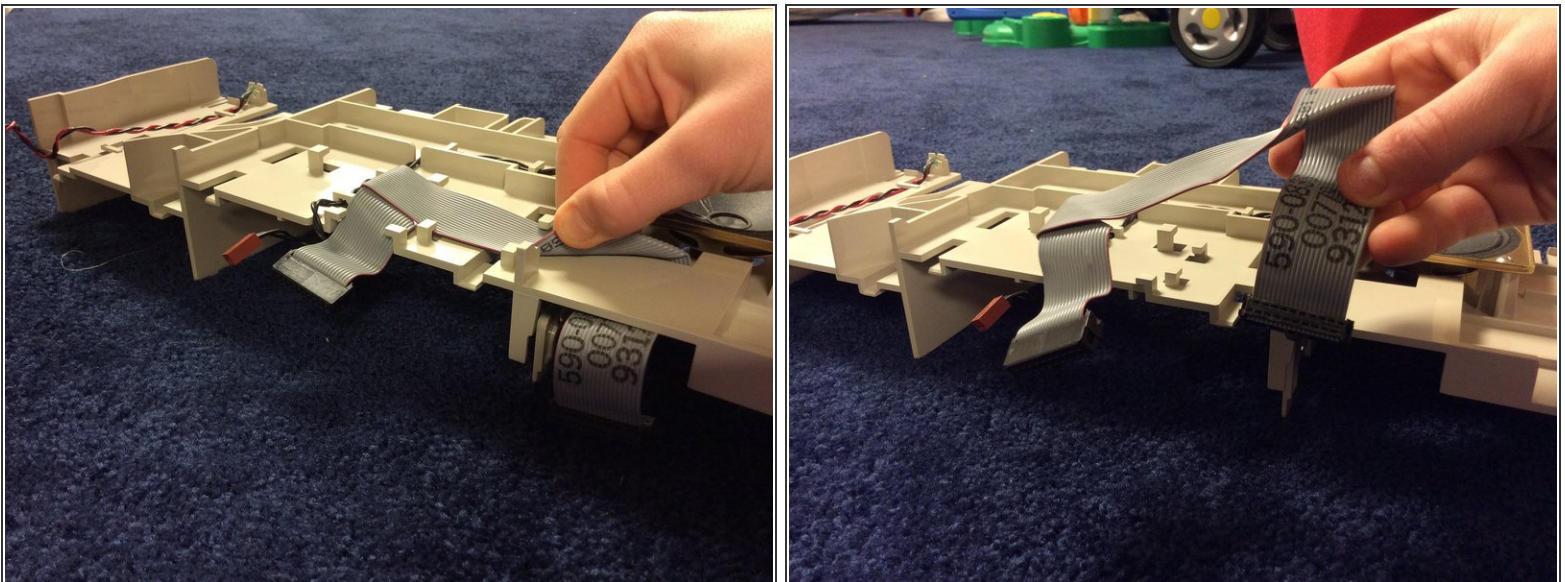


## Step 18 — Internal Chassis



- i** The chassis is secured to the bottom cover by two tabs at the front of the unit, two rail and tab sets at the sides of the unit, support posts at the back of the chassis, and hidden brackets that slide into the bottom cover.
- Step 1: Press up on one of the front tabs while lifting the support post. Step 2: Repeat this step on the other side until the internal chassis slides easily toward the back of the computer.

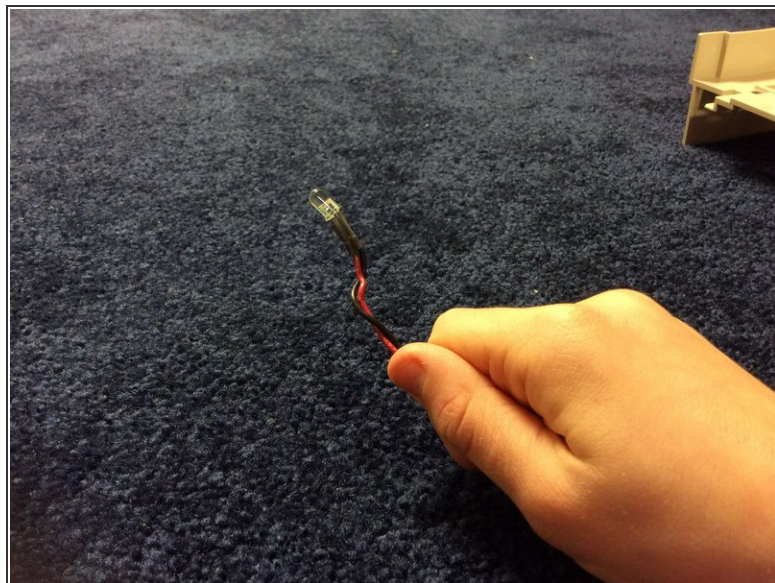
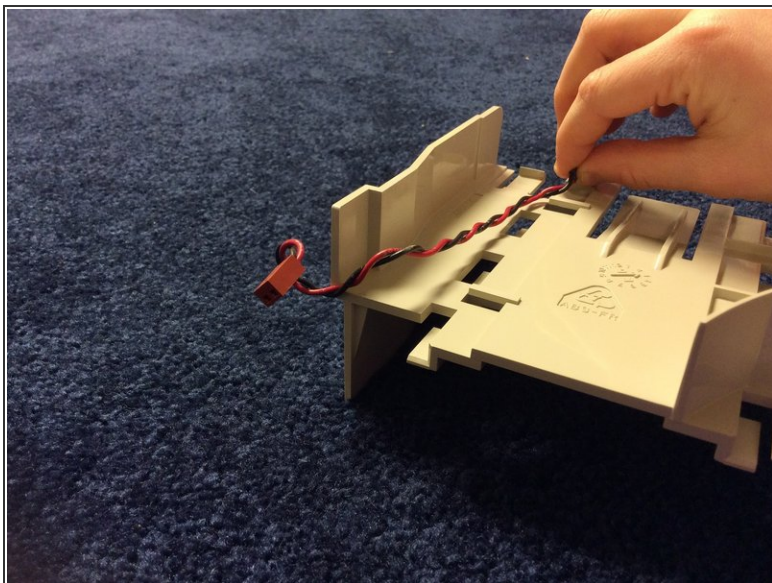
## Step 19



- Flip the internal chassis over, and take out the floppy cable, carefully unthreading it from its routing guides.

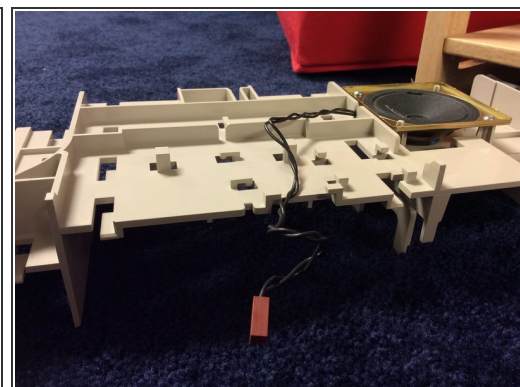
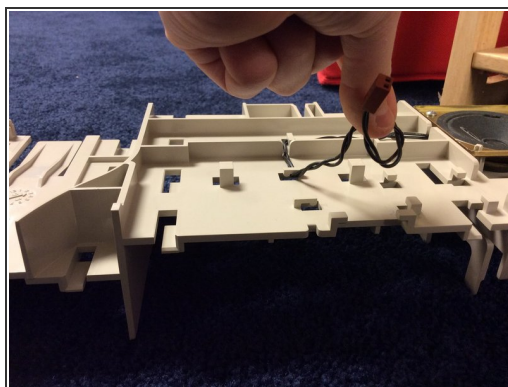
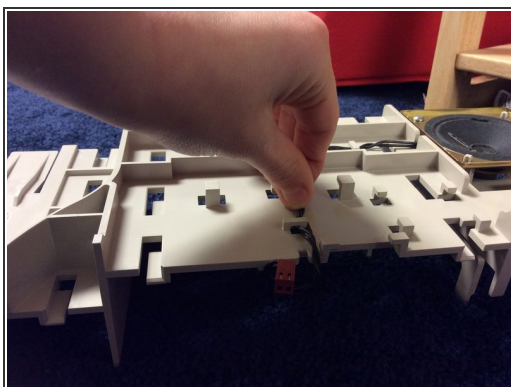


## Step 20



- Take out the LED cable, carefully removing it from its routing guides.

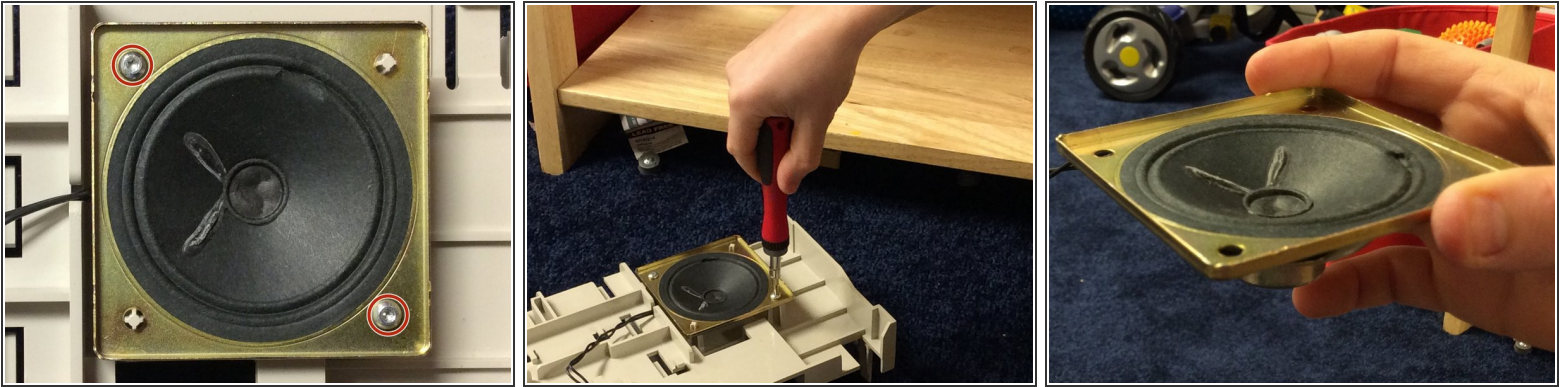
## Step 21



- Carefully remove the speaker wire from its routing guides.



## Step 22



- Unscrew the two marked Torx screws with your [T10 Torx screwdriver](#) and remove the speaker.

## Step 23 — Good Job!



- Congratulations! You just took apart your Macintosh Quadra / Centris 610!

## Step 24



- Follow these steps in reverse to put it back together.