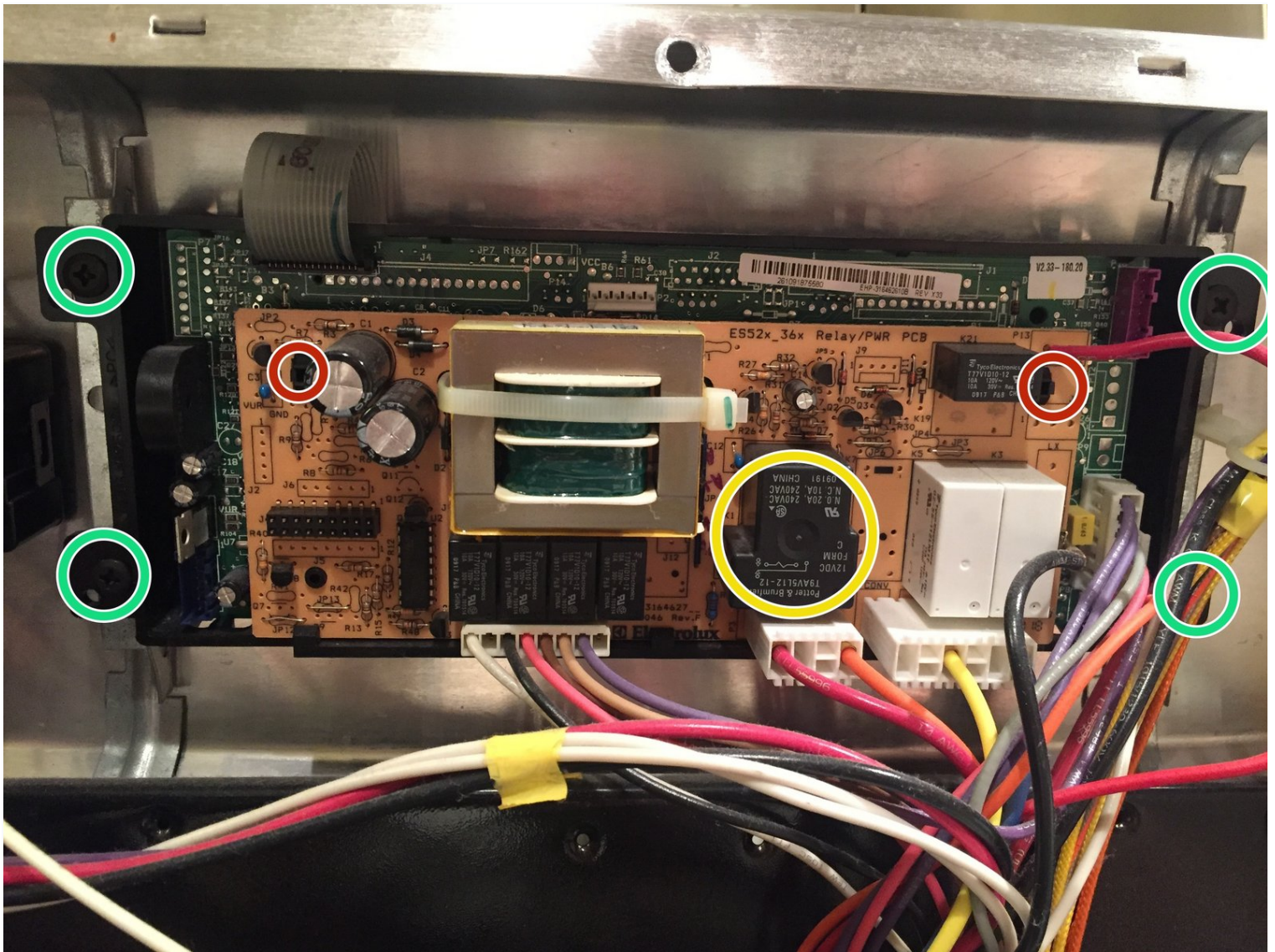




Kenmore Oven Resoldering or Replacing a Relay (T9AV5L12-12) Repair

This guide applies to other oven/range in the...

Written By: patricelaroche



INTRODUCTION

This guide applies to other oven/range in the 970-XXXXXX (e.g. 970-687633) series.

My oven was not heating up, only the convection element worked (it's on 120VAC).

No 240VAC was present at either the bake or broil element. All elements tested good at 14-25 ohms.

This simple guide will point you to the faulty joint and/or relay, a 5\$ part, that will fix your oven.

Be careful and always unplug the oven from the wall outlet when working on it.

I didn't plan on making this guide prior to fixing the oven so don't hesitate to ask questions if needed.

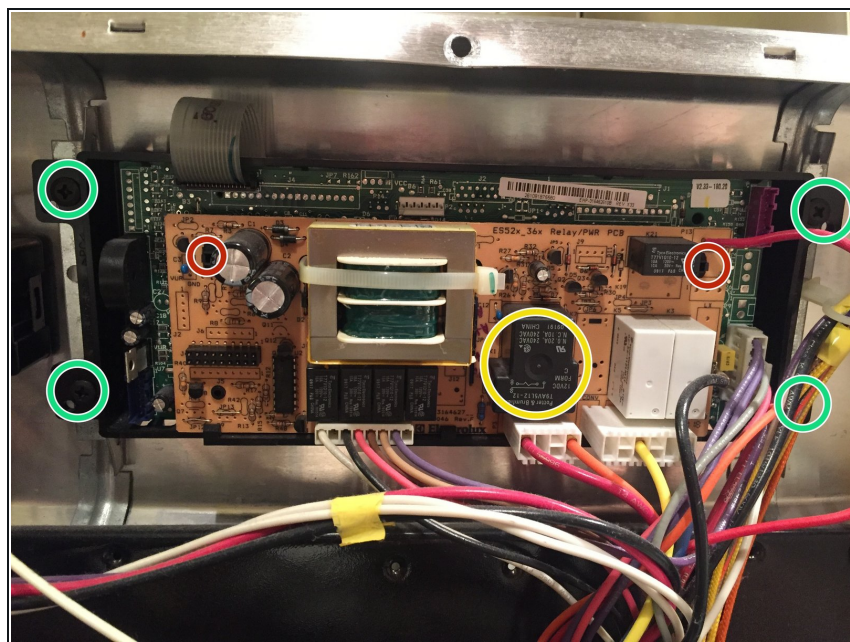
TOOLS:

[Soldering Workstation](#) (1)

PARTS:

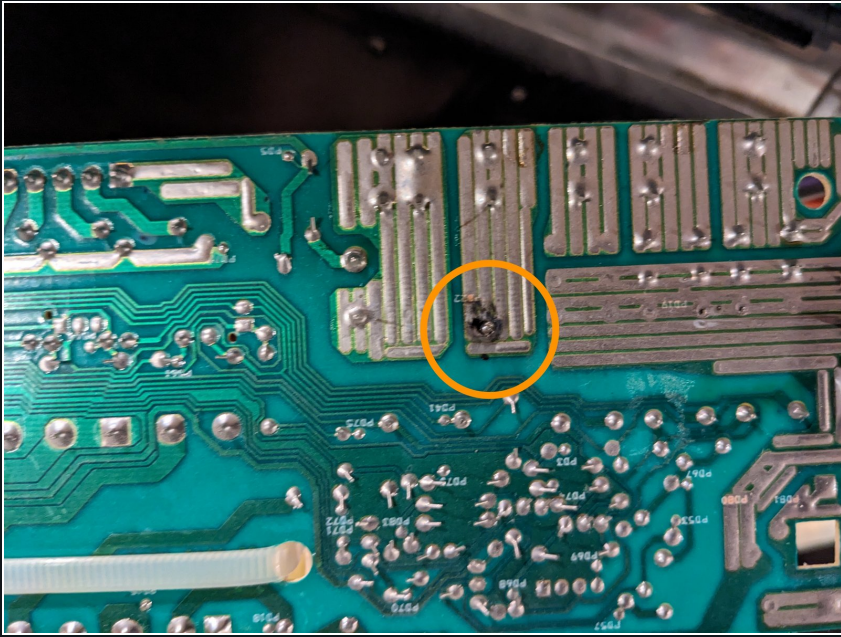
[Relay T9AV5L12-12](#) (1)

Step 1 — Detach or remove PWR Board



- This won't show you how to diagnose or open the back of your oven, you need enough skill to get here.
- Remove the PWR board by removing the clips. Be careful, you have to pull out "locking" clips with pliers before you can press in the other locking clips. Once you see them you'll figure it out quickly.
- If necessary, you can remove the whole clock assembly by unscrewing the 4 screws.

Step 2 — Replace and/or resolder



- Inspect the back of the board. The relay you need to check is the big black one, circled in yellow in Step 1, the T9AV5L12-12.
- If there is a melted solder joint on one contact, and you can hear the relay clicking when you set the oven in BAKE or BROIL mode, this might be the only issue. Resolder the join.
- If the relay needs to be changed, desolder and solder the new one in.
- Reassemble and test the oven.

To reassemble your device, follow these instructions in reverse order.