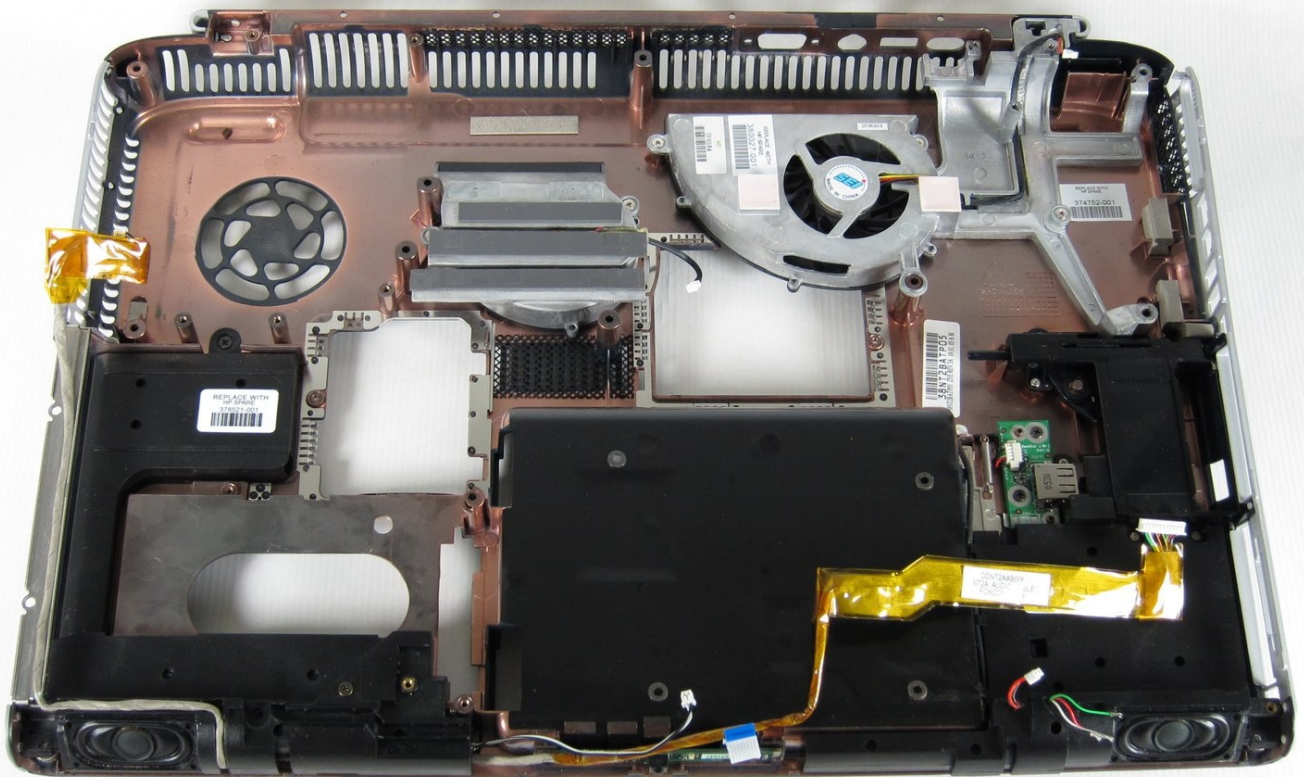




# HP Pavilion zd8000 Left Speaker Replacement

Written By: Allie Menard



---

## TOOLS:

Paper Clip (1)  
Phillips #00 Screwdriver (1)  
Phillips #1 Screwdriver (1)  
Large Needle Nose Pliers (1)  
Spudger (1)  
Tweezers (1)

---

### Step 1 — Battery



- Slide the battery release latch towards you.

## Step 2



- Pull up on the battery to remove it.

## Step 3 — RAM



- Loosen the Phillips screw labeled 'ram' and lift the cover.



## Step 4



- Locate the green RAM card and find the metal tabs securing the card.
- Push outwards on the two tabs to release the card.

## Step 5



- Carefully slide the card out at an upward angle away from the slot.



## Step 6 — WiFi Card Cables



- Unscrew the four 8mm Philips screws marked with an icon resembling a stacks of discs.
- Lift the cover from the right to remove it.

## Step 7



- Use [tweezers](#) to detach the grey and black cables connected to the green WiFi card.

## Step 8 — CD/Optical Drive



- Remove the 8mm Philips screw located between the hard drive and the WiFi card.

## Step 9



- Turn the laptop 90 degrees clockwise so you are facing the CD drive.
- Unbend a paperclip and insert the end into the small hole by the eject button to cause the tray to pop out towards you.



## Step 10



- Gently pull the tray away from the laptop and the rest of the optical drive will follow.

## Step 11 — Keyboard



- Remove the two 8mm Philips screws marked “K” on the bottom of the laptop.



## Step 12



- Flip the laptop over and open the screen.
- Push up on the four latches located at the top of the keyboard with the spudger to release them.

## Step 13



⚠ Lift the keyboard carefully because it is attached to the motherboard by a ribbon cable.

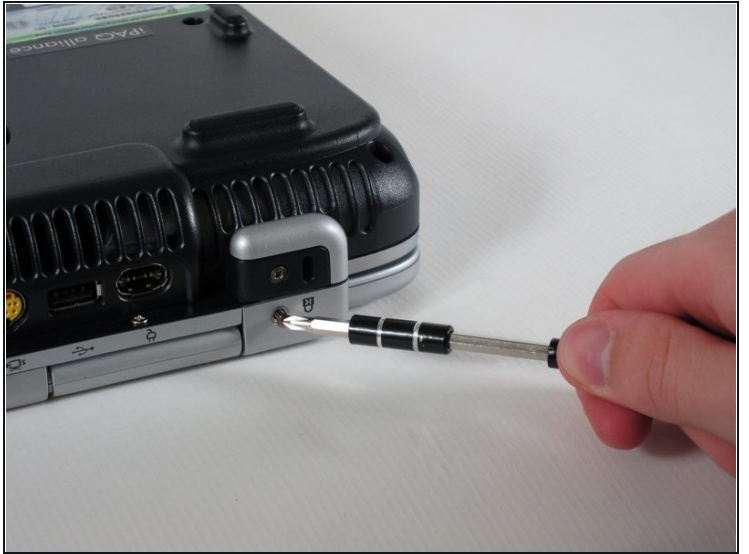
- Lift the top of the keyboard towards you. Then, while keeping the keyboard at an angle, lift it towards the display.

## Step 14



- Rotate the keyboard so that the bottom is visible.
- With the keyboard lifted, locate the blue-striped tab on the underside of the black ribbon cable.
- Pull the tab towards you to release the keyboard from the laptop.

## Step 15 — Switch Cover



- Place the laptop face-down and rotate it 180 degrees so the vents are facing you.
- Remove the five 8mm Philips screws. Three are on the black base and two are near the hinges.

## Step 16



- Flip the laptop over.
- Fully open the laptop.



## Step 17

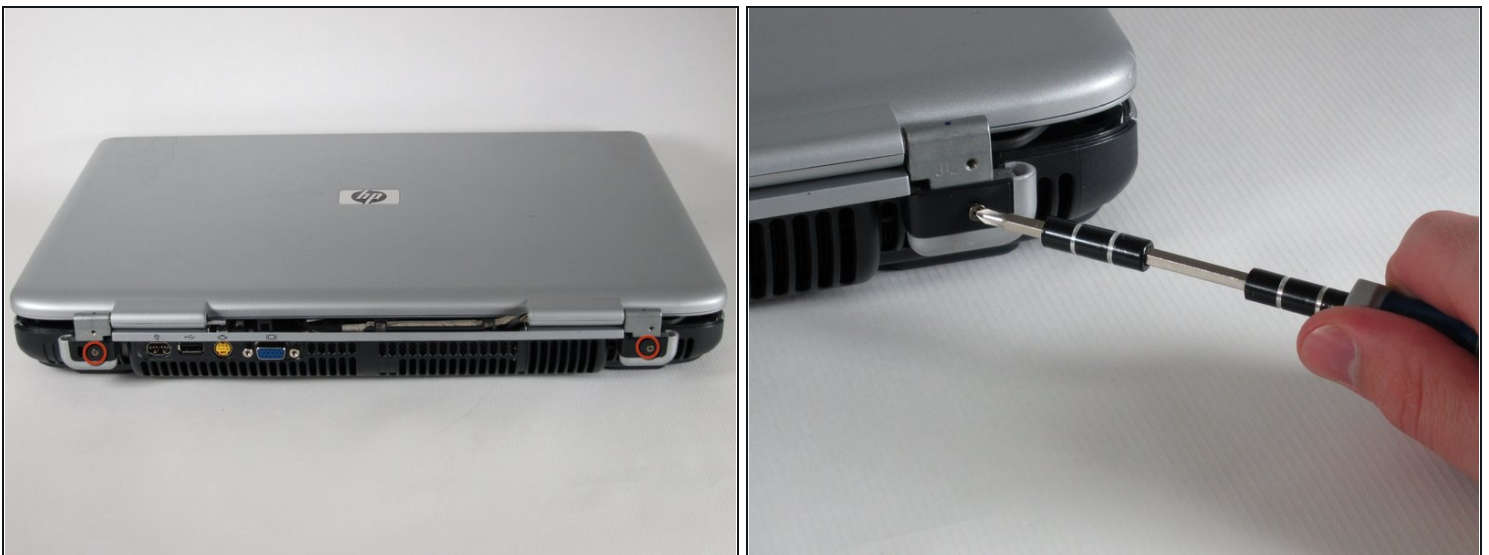


- Rotate it so the display is on your right and the keyboard is on your left.

⚠ Lift the switch cover firmly but slowly so you do not snap it.

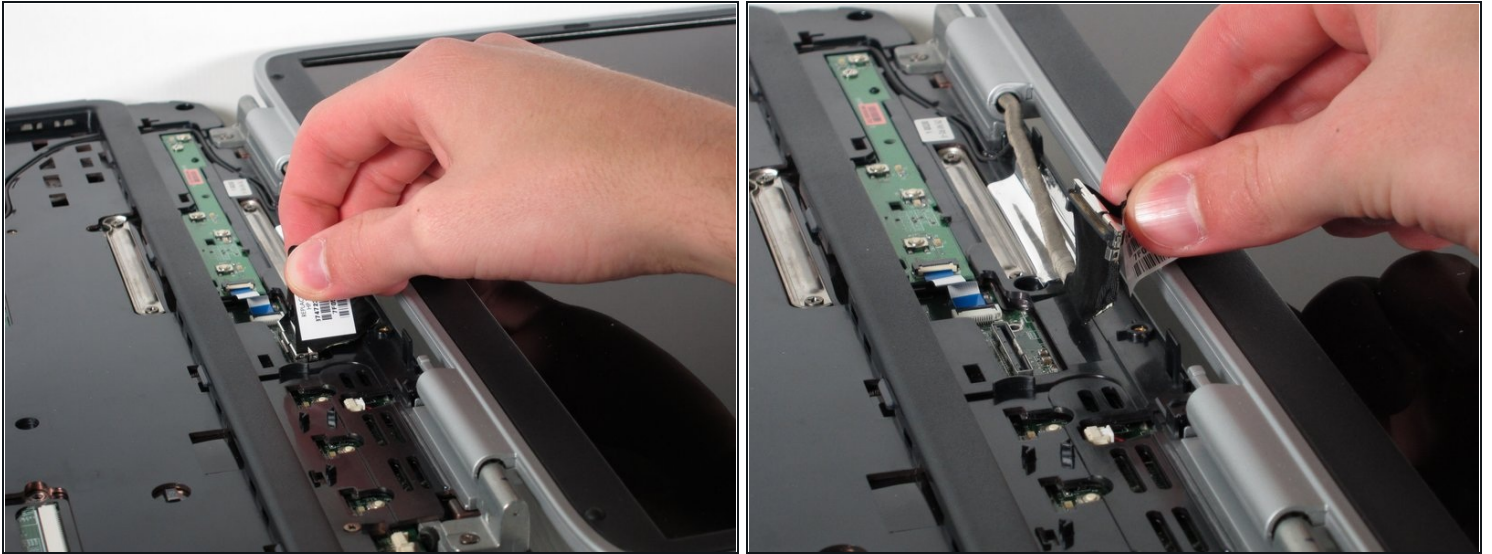
- Lift the switch cover carefully from one end while sliding the spudger between the switch cover and the laptop to separate them.
- The switch cover should easily separate from the laptop as you run the spudger through.

## Step 18 — Screen



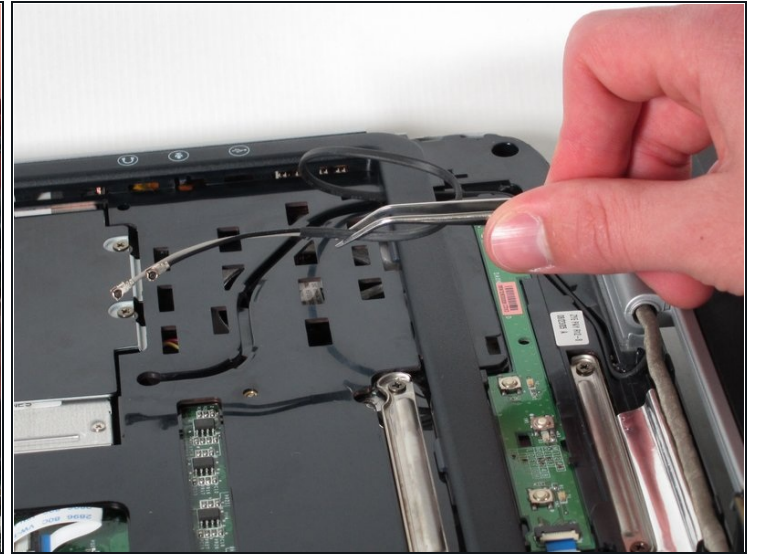
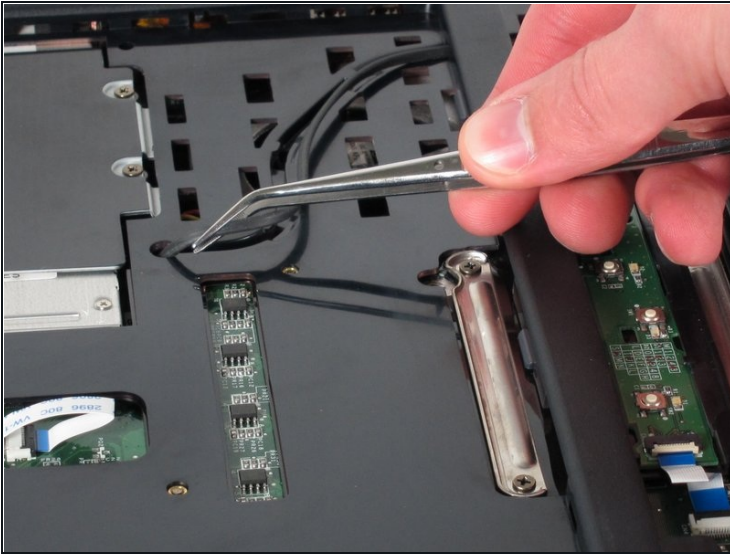
- Close the lid and rotate the laptop so that the vents are facing you.
- Unscrew the two 8mm Philips screws below the hinges.

## Step 19



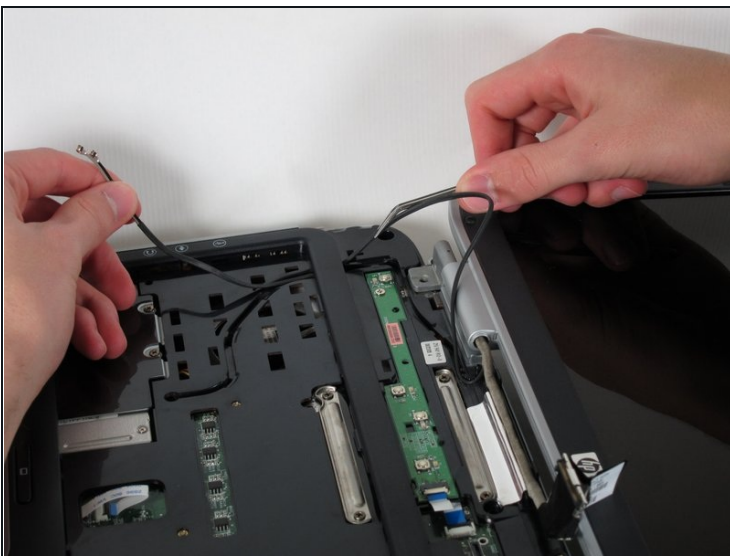
- Carefully rotate the laptop 90 degrees counter-clockwise and open the screen.
- Pull on the black tab with the HP service sticker to unplug the display from the motherboard.

## Step 20



- Using [tweezers](#), remove the black cable from the hole leading to the WiFi enclosure.
- Pull gently to remove the black and grey cables from the case.
- ① Check the surface beneath the laptop to ensure the cables do not catch on anything when you flip the laptop over.

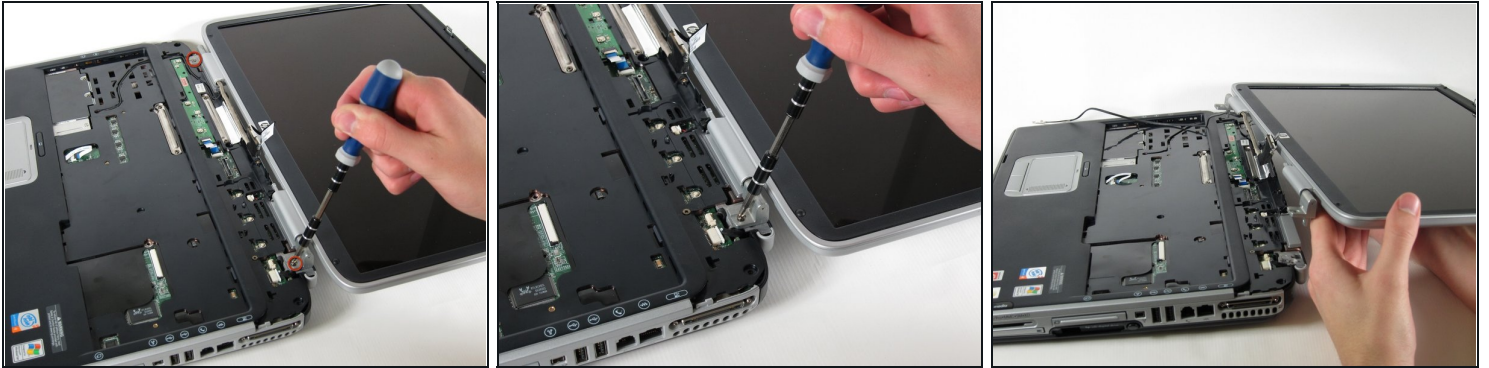
## Step 21



- Using tweezers, pull the black cable towards the display and through the hole in the casing.



## Step 22



- Unscrew the two 8mm Philips screws that attach the hinge to the laptop's display.
- Lift the screen upwards to detach it from the laptop.

## Step 23 — Top Cover



- With the laptop face-down, remove the eleven 8mm Philips screws.

## Step 24



- Rotate the laptop 180 degrees so the vents are facing you.
- Unscrew the four 3mm Philips screws below the vents.

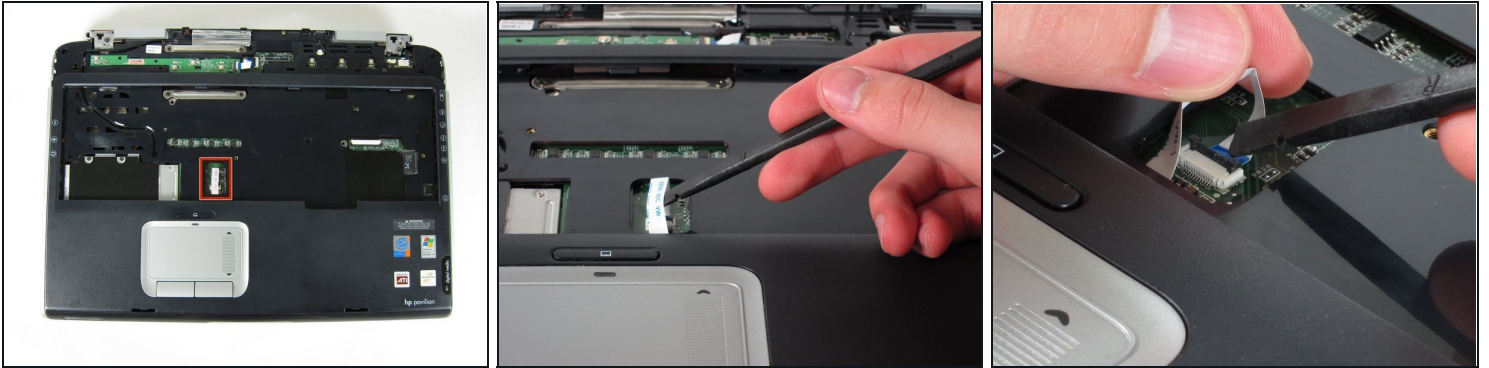
## Step 25



- Rotate the laptop 90 degrees counter-clockwise.
- Unscrew the two 3mm Philips screws from the optical drive bay.

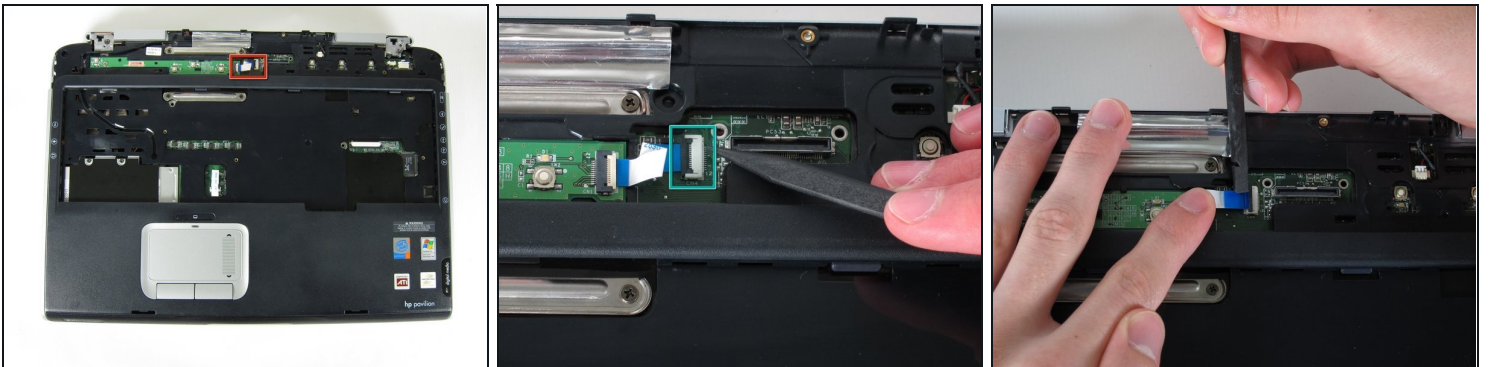


## Step 26



- Flip the laptop over so it is face-up with the trackpad closest to you.
- Locate the ribbon cable directly above the track pad.
- Find the black latch at the end of the ribbon cable and unlatch it with a spudger to release it.

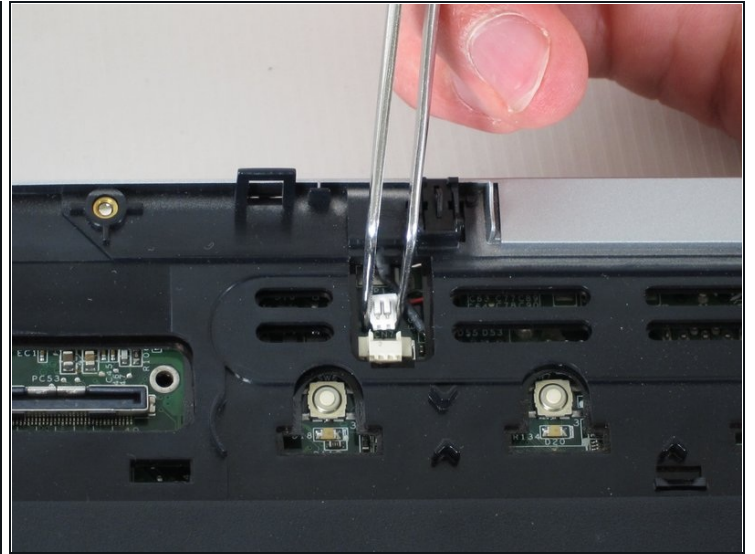
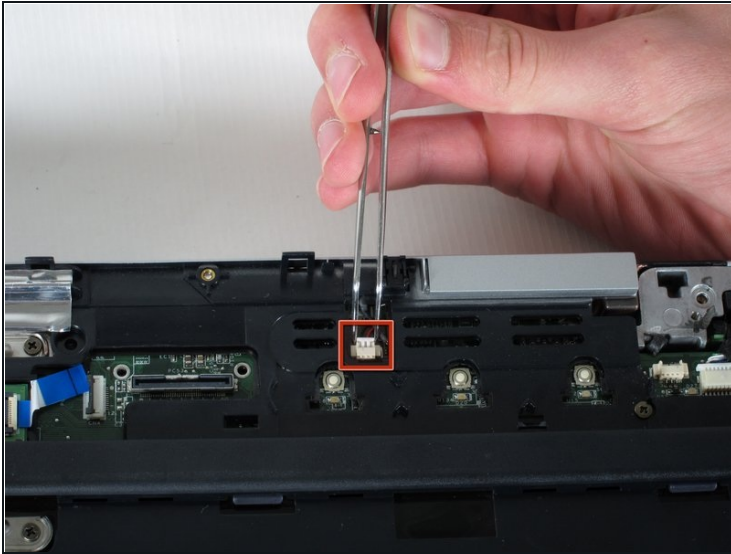
## Step 27



- Find the ribbon cable on the LED board located at the top of the laptop.
- You will notice that the ribbon cable is connected to two levels - you will be dealing with the one on the lower level.
- Find the black latch at the end of the ribbon cable and unlatch it with a spudger to release it.



## Step 28



- Locate the white connector attached to a red and black cable to the right of the LED board.
- Using [tweezers](#), pull the white connector away from you.

## Step 29



- Unscrew the four 8mm Philips screws from the top cover.

## Step 30



- Rotate the computer 90 degrees clockwise and insert the spudger at the seam above the card reader.
- While lifting the front end of the top cover, slide the spudger across the seam.
- When you have reached the firewire port, it should click open.

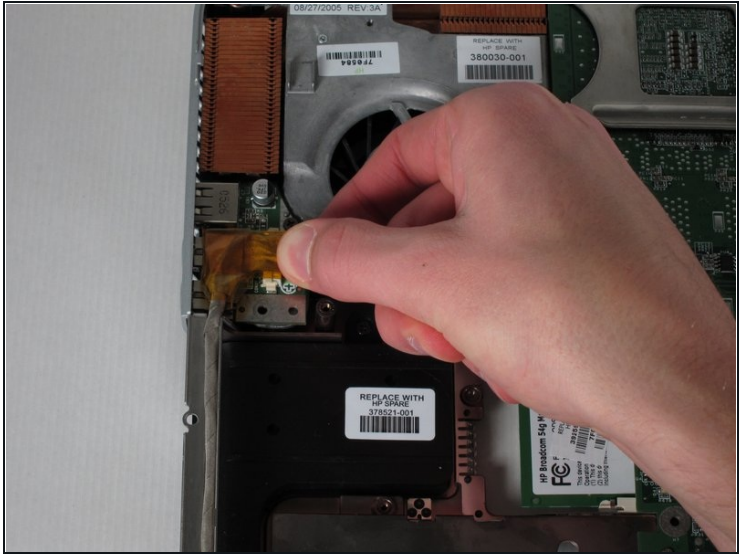
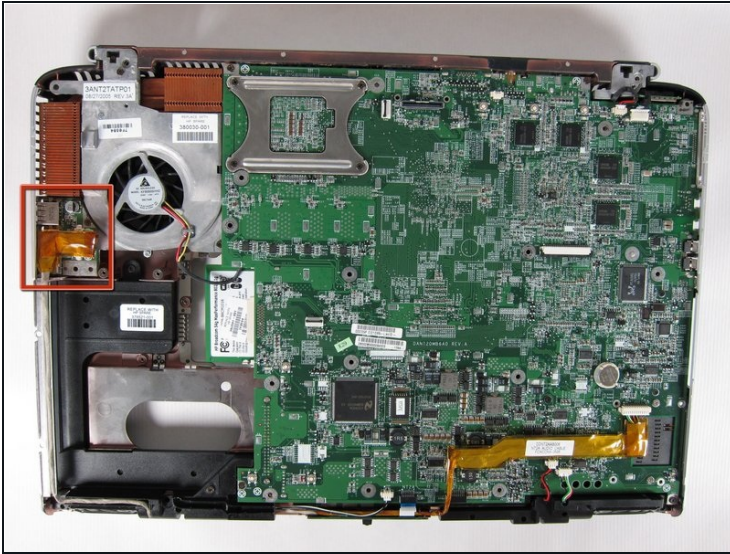
## Step 31



- Lift the top cover from the left side to remove it completely.

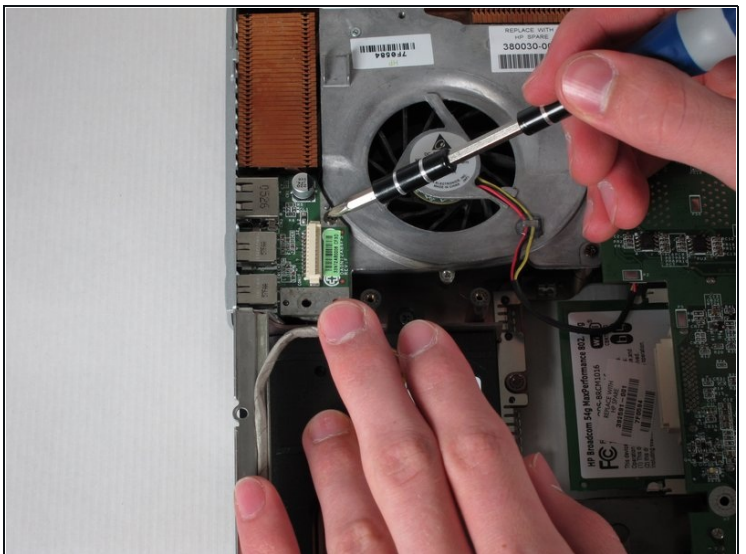


## Step 32 — USB Module



- Rotate the laptop 90 degrees counter-clockwise
- Locate the USB Module
- Grip the yellow cable cover and pull it to the right to release it.

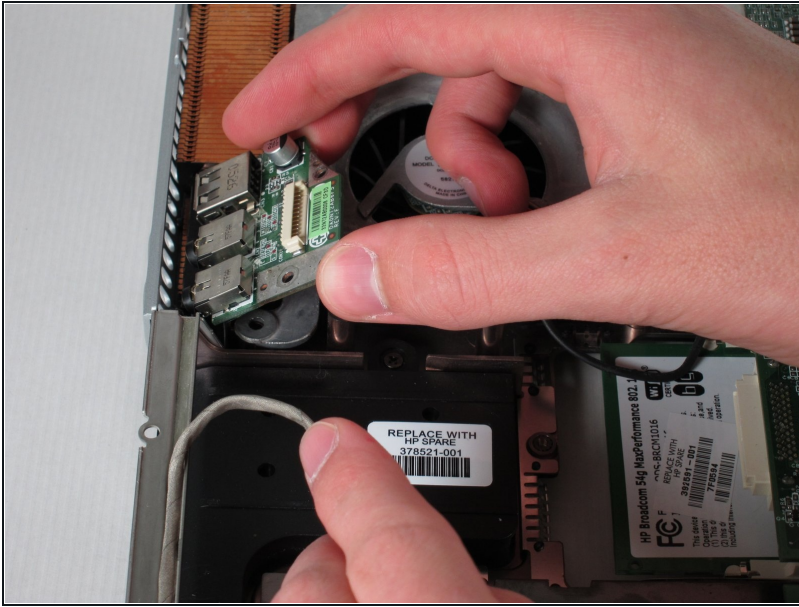
## Step 33



- Unscrew the 6mm Philips screw connecting the USB module to the fan.

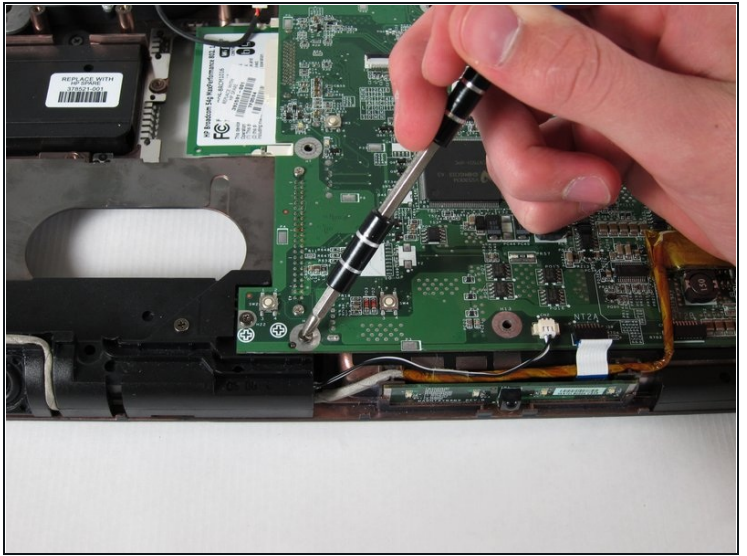
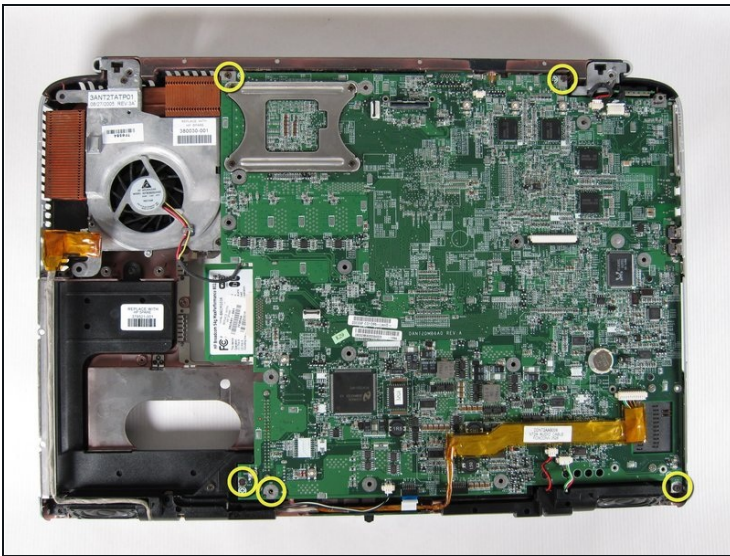


## Step 34



- Pull the module to the right and lift it out to release it.

## Step 35 — Motherboard



- Unscrew and remove the five 4mm Philips screws marked with the white Phillips screw icon.

## Step 36



- Unscrew and remove the two 8mm Philips screws from the heat sink fan.

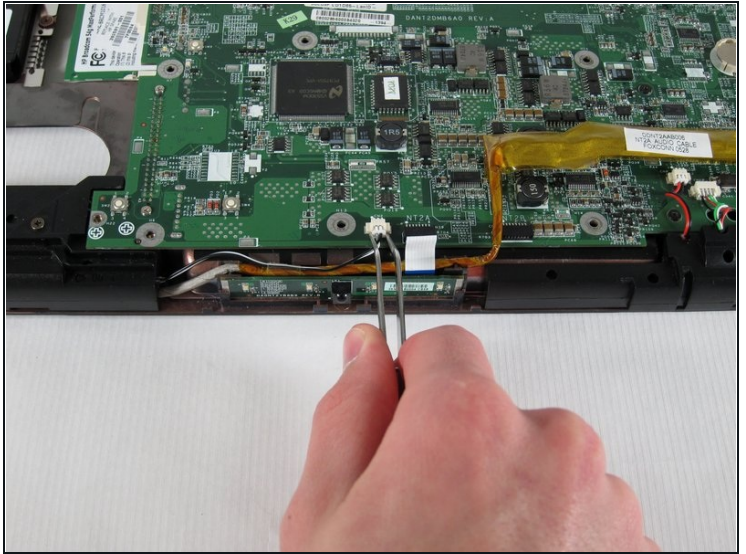
## Step 37



- Using [tweezers](#), remove the digital drive board cable - the cable set on the right with black, red, green, and white wires.
- Using tweezers, remove the the righth speaker cable - the cable set on the left with red and black wires - by pulling the white connector towards you.

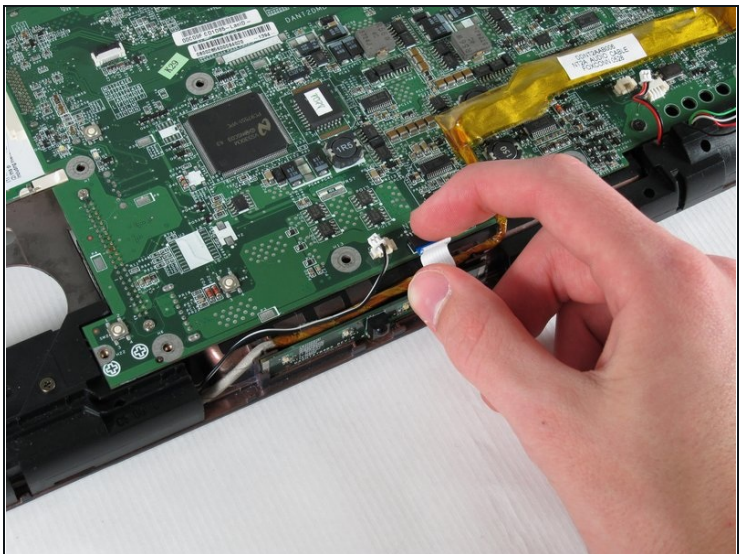


## Step 38



- Using tweezers, remove the left speaker cable by pulling the white connector towards you.

## Step 39



- Remove the LED board cable by pulling the white tab towards you.

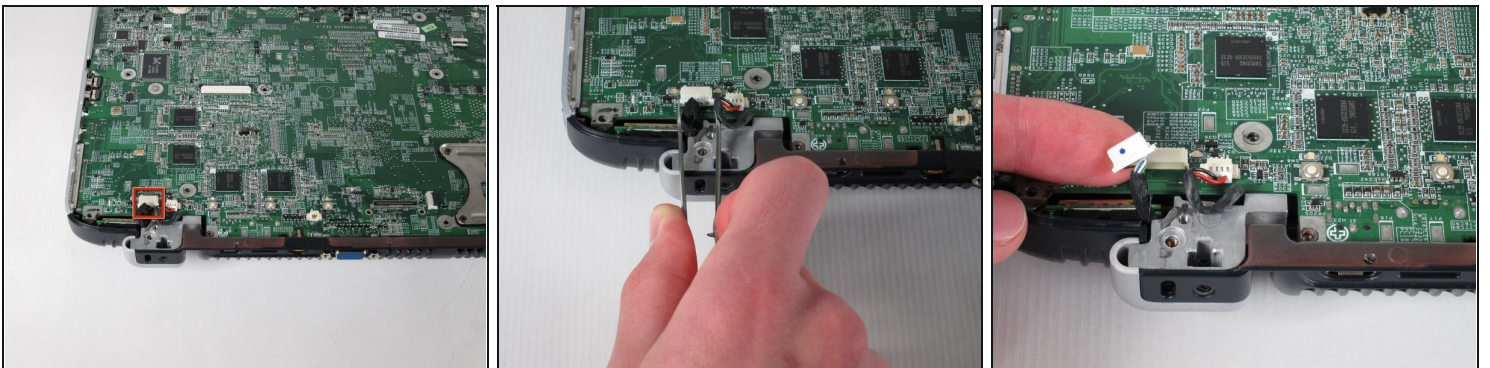


## Step 40



- Remove the audio cable - the one with the yellow covering located at the bottom-right corner of the motherboard - by pulling the yellow covering towards you.

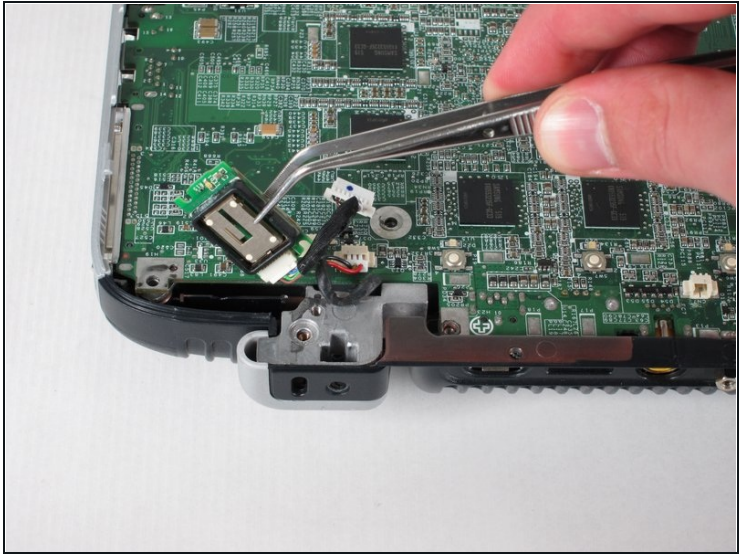
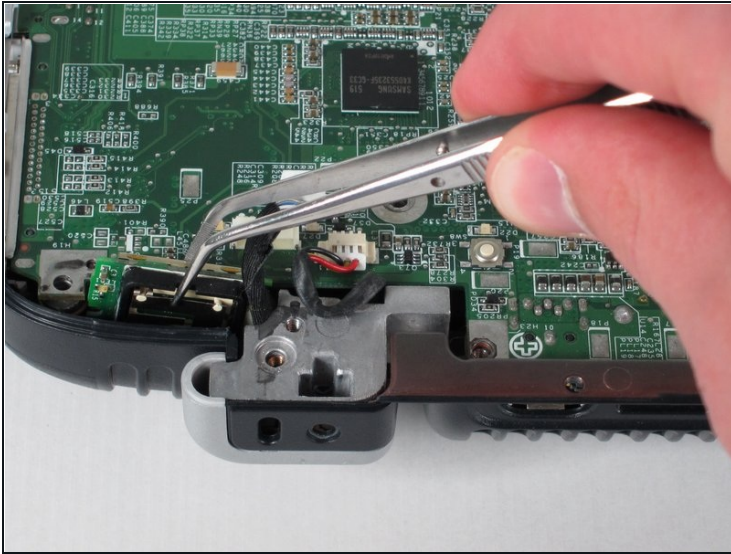
## Step 41



- Rotate the laptop 180 degrees and locate the Bluetooth module at the bottom-left corner of the motherboard.
- Using tweezers, remove the Bluetooth module's white connector by pulling it away from you.

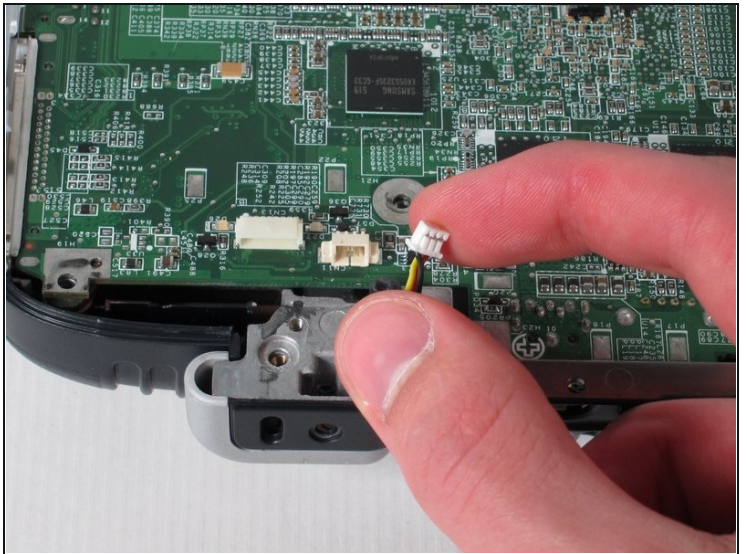
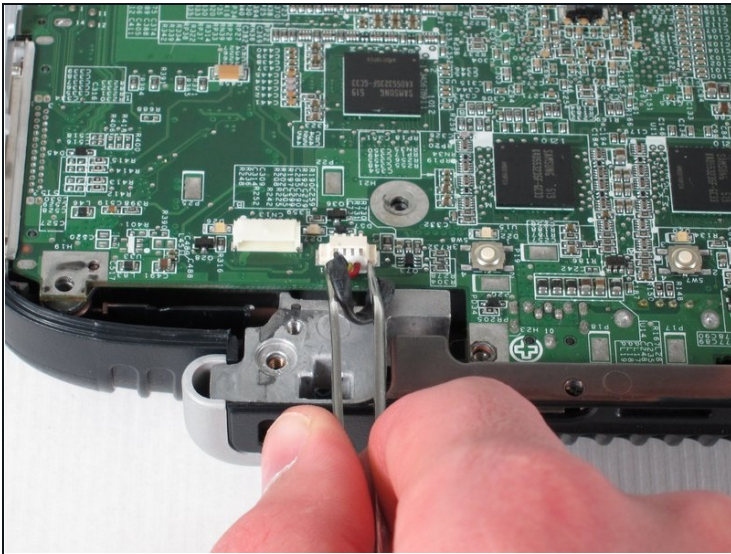


## Step 42



- Using tweezers, pull up on the Bluetooth module to remove it.

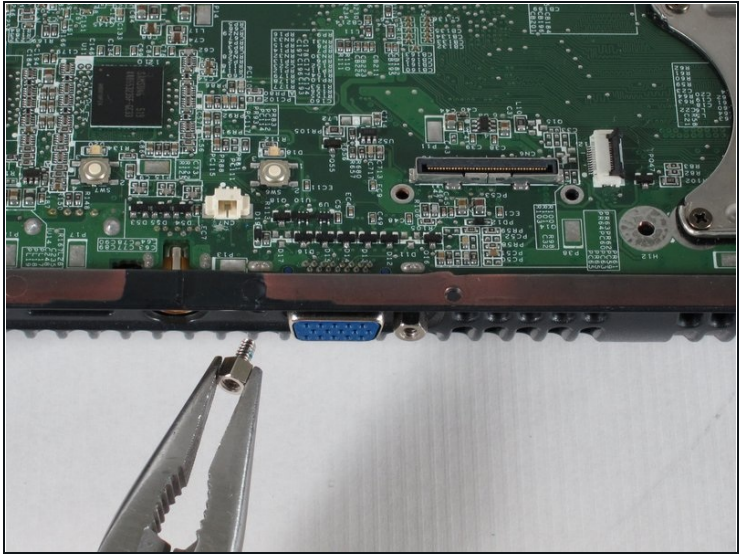
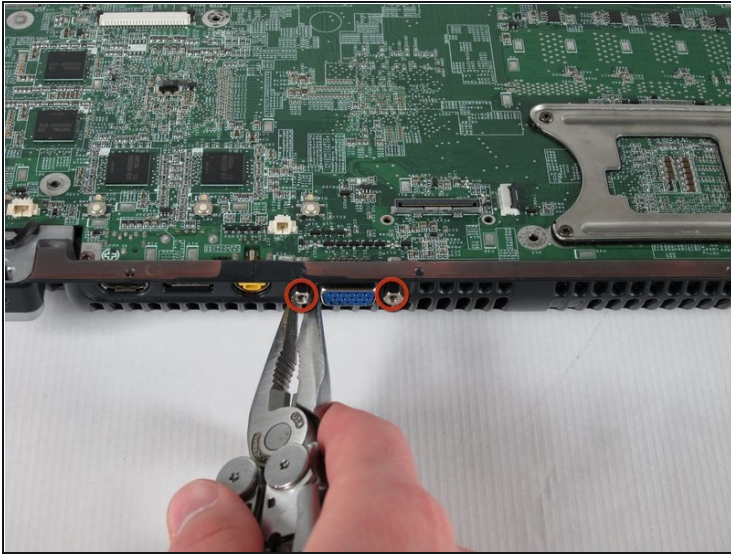
## Step 43



- Remove the fan cable by pulling the white connector away from you.



## Step 44



- Using pliers, unscrew and remove the two bolts from both sides of the blue VGA connector.

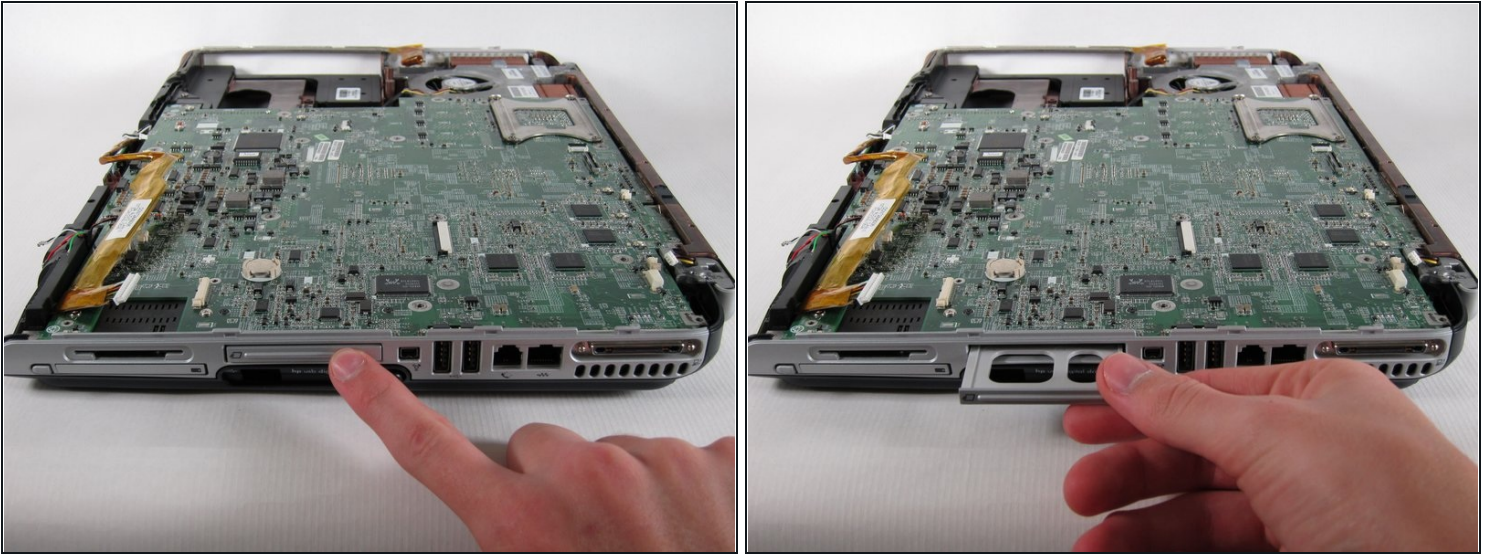
## Step 45



- Carefully flip the laptop face-down with the battery compartment facing you.
- Using tweezers, remove the black and red cable from the RAM compartment by pulling on the white connector.



## Step 46



- Flip the laptop face-up and turn it so that the drive labelled "hp usb digital drive" faces you.
- Press the ridged space saver card above the "hp usb digital drive" label to eject and remove it.

## Step 47



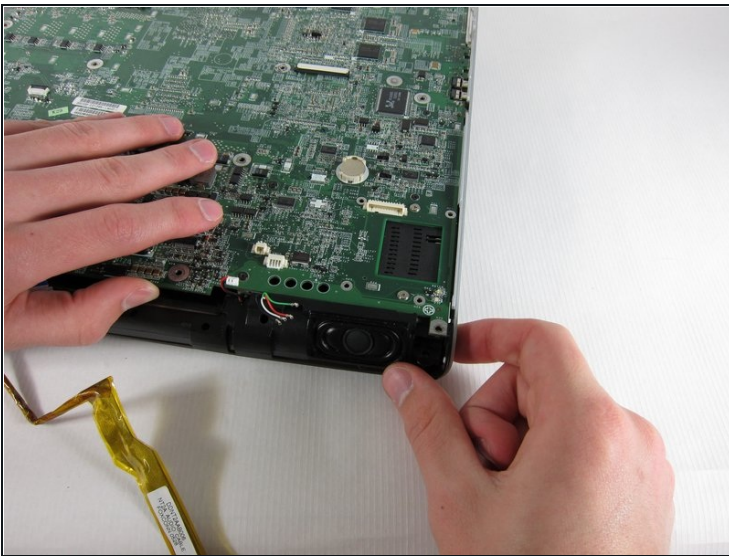
- Locate the PC card below the SD card reader.
- Push the button to its left once to eject the button itself, then press it once again to remove the PC card.

## Step 48



- Once the PC card pops out, pull it out.

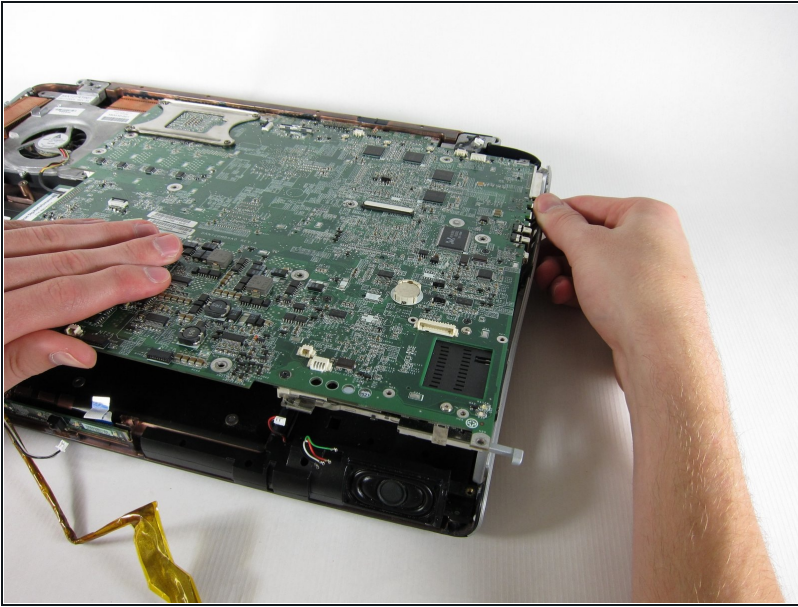
## Step 49



- Turn the computer 90 degrees counter-clockwise and clear all cables off of the motherboard.
- ① Push in the grey button to the left of the PC card as far as possible.
- Keeping the button pressed down, lift the motherboard up until the button pops out the top of the case.



## Step 50



- Pull the right casing to the side to release the ports on the motherboard from it.

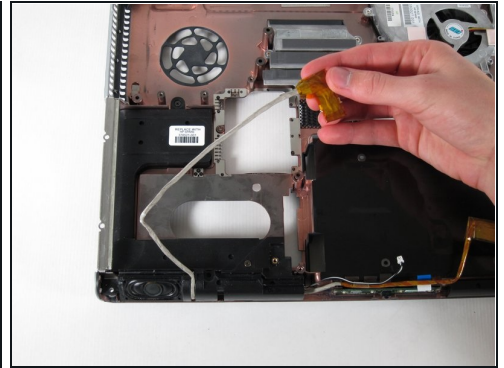
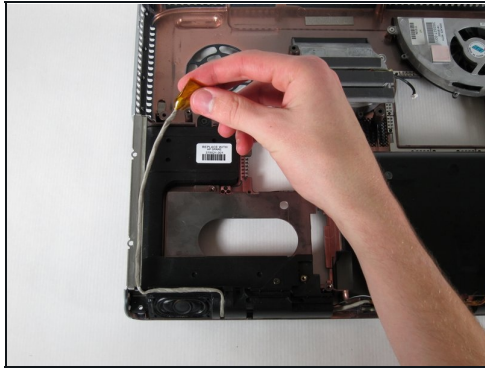
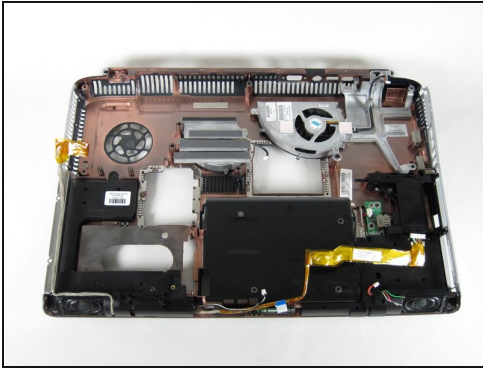
## Step 51



- Lift the motherboard up until it releases from the bottom casing and remove it from the laptop.

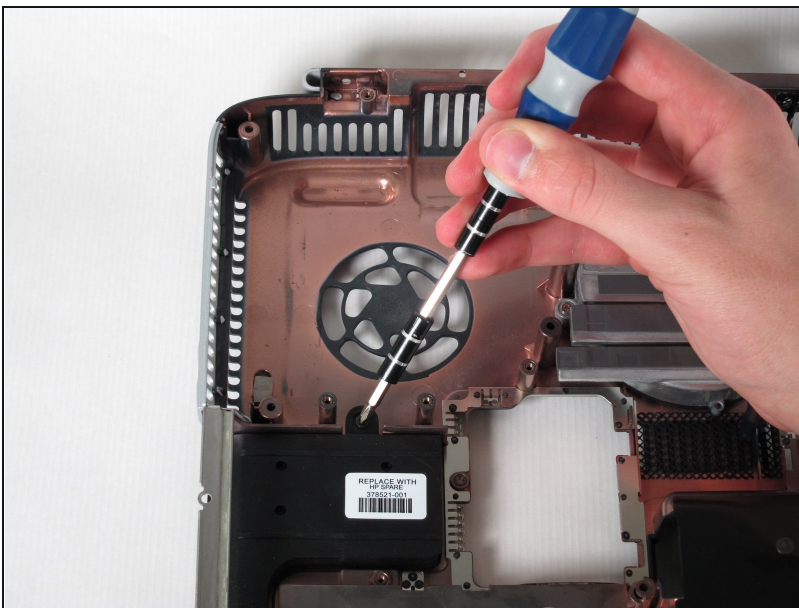


## Step 52 — Left Speaker



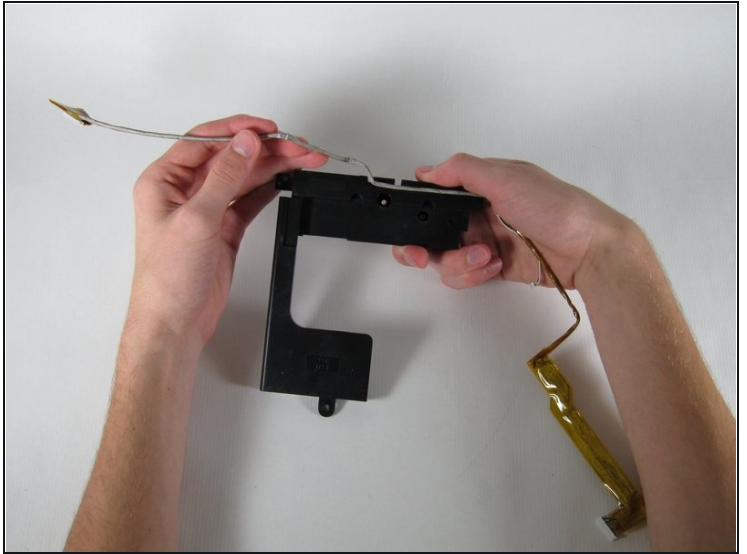
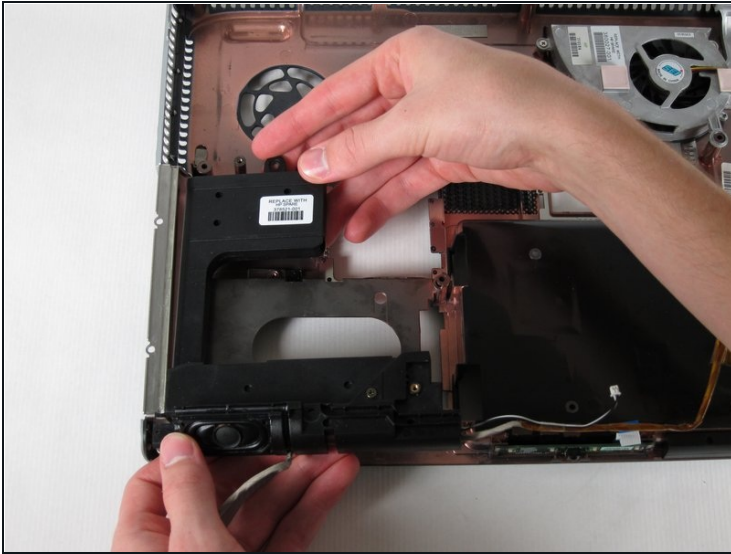
- Pull the USB cable away from the speaker.

## Step 53



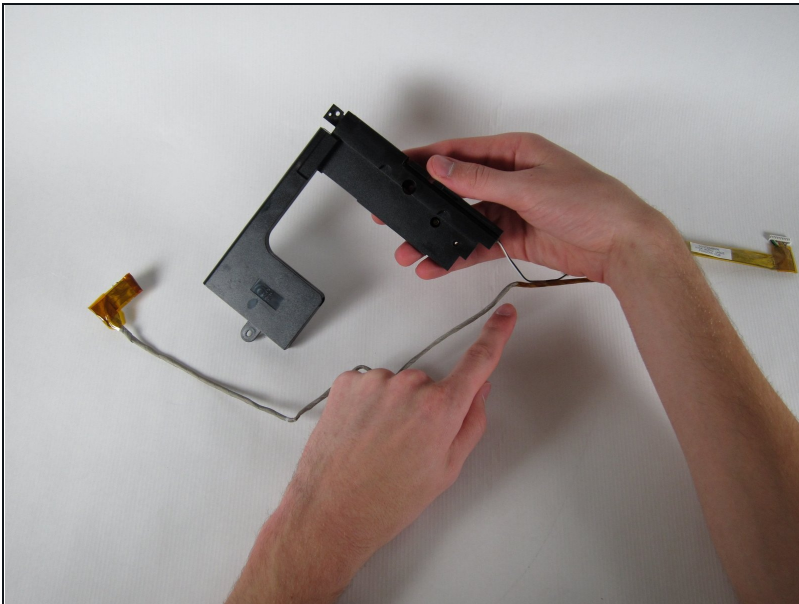
- Unscrew the 6mm Philips screw at the back of the left speaker unit.

## Step 54



- Lift the speaker unit up, flip it, and remove the USB cable.

## Step 55



- Cut the tape that attaches the USB cable to the left speaker cable.

---

To reassemble your device, follow these instructions in reverse order.