



PlayStation 2 Slimline Teardown

This guide will walk you through the steps of disassembling and reassembling a playstation 2 slim.
A step by step guide with pictures.

Written By: kempc8



INTRODUCTION

This guide will walk you through the steps of disassembling and reassembling a playstation 2 slim. A step by step guide with pictures.



TOOLS:

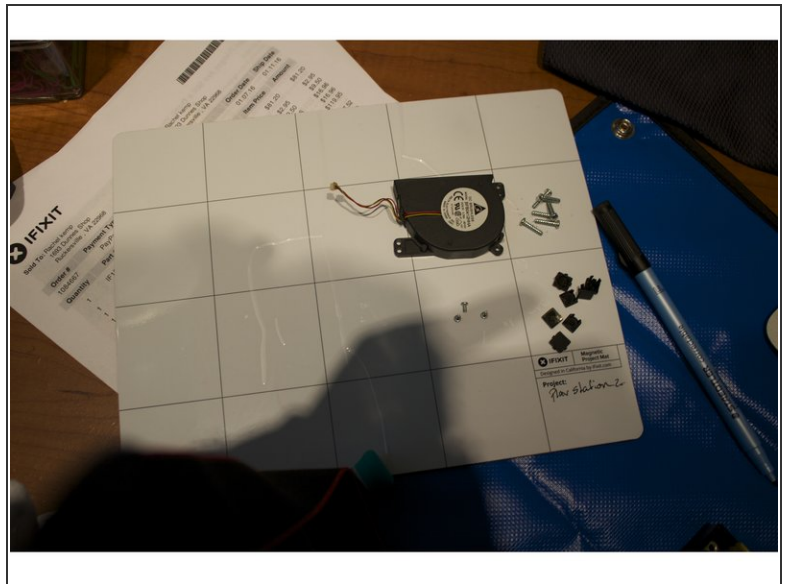
- [Phillips #00 Screwdriver](#) (1)
 - [Spudger](#) (1)
 - [Tweezers](#) (1)
 - [Magnetic Project Mat](#) (1)
 - [ESD Gloves](#) (1)
 - [Anti-Static Mat](#) (1)
-

Step 1 — Let's get started



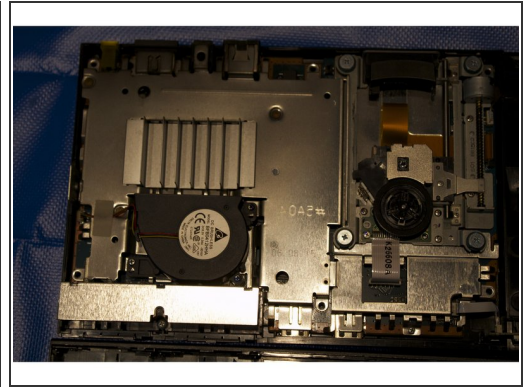
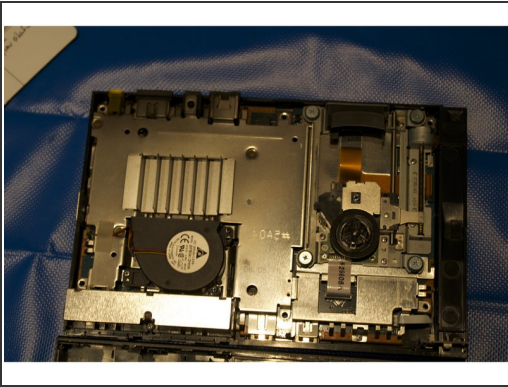
- Start with the console upside down.

Step 2



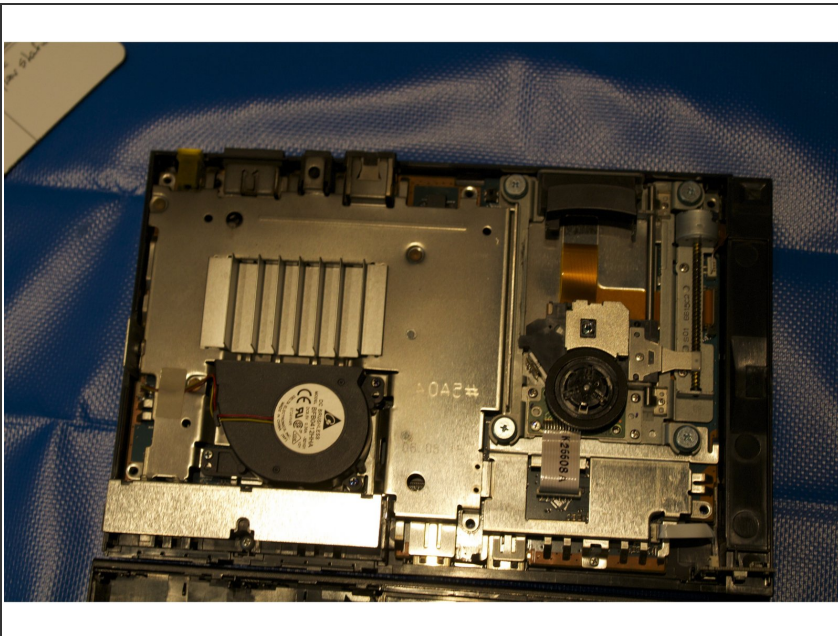
- Remove the six screw covers and place on project mat.
- Remove the six 4.0 mm screws on the base of the PS2. (Place on your project mat.)

Step 3



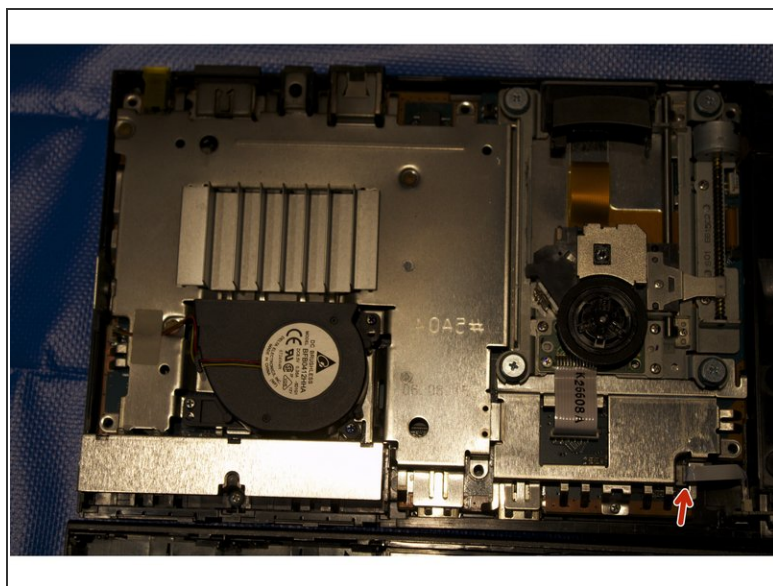
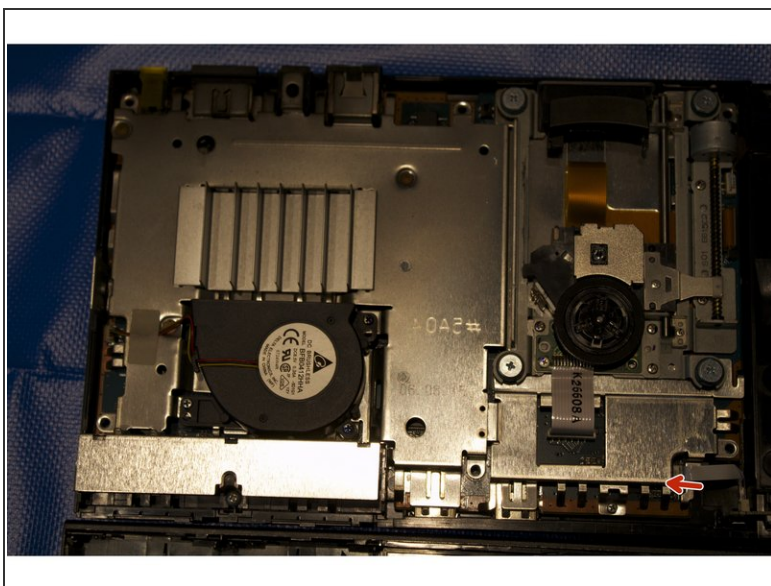
- Separate the bottom of PS2 from the top. Place to the side.

Step 4



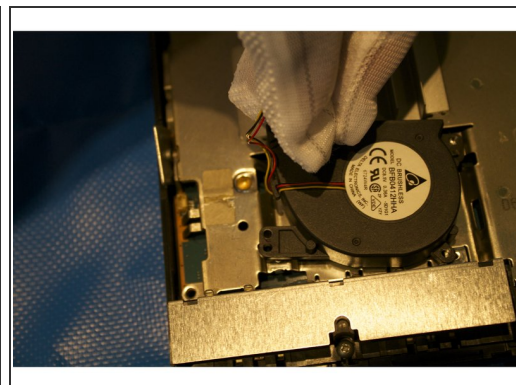
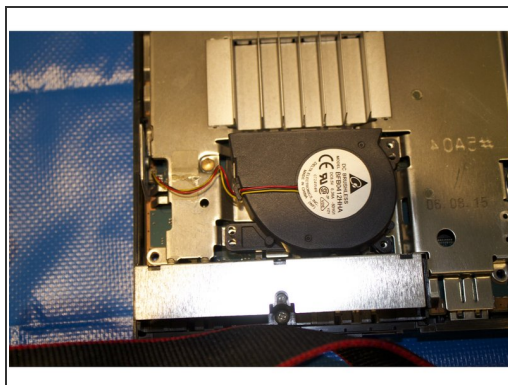
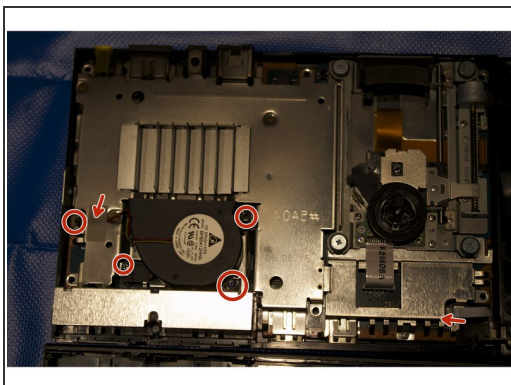
- "This PS2 that I am tearing down has no clock battery!!"
- Locate the clock battery. Take tweezers and gently disconnect from motherboard. (Place on project mat)

Step 5



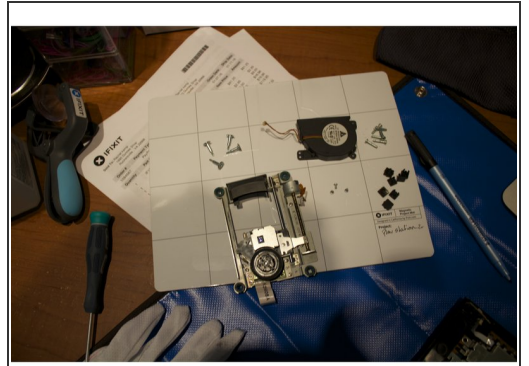
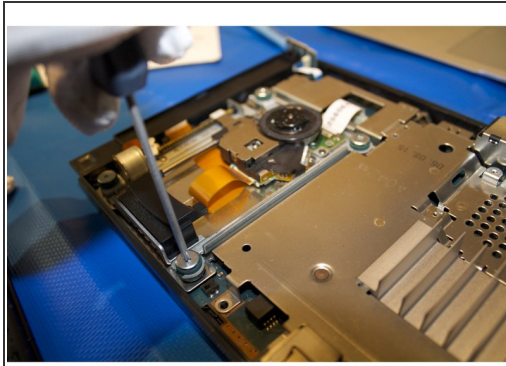
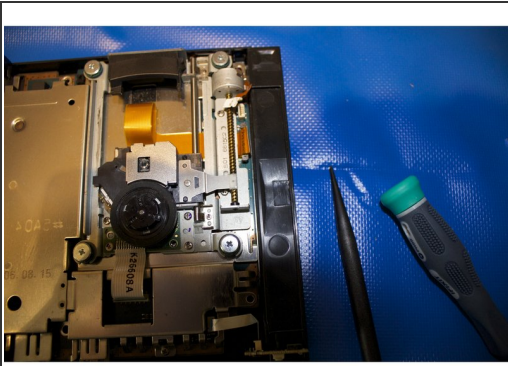
- IR sensor on the motherboard.
- Gently use a spudger to release the blue/ white ribbon from motherboard, (Place IR sensor on project mat)

Step 6



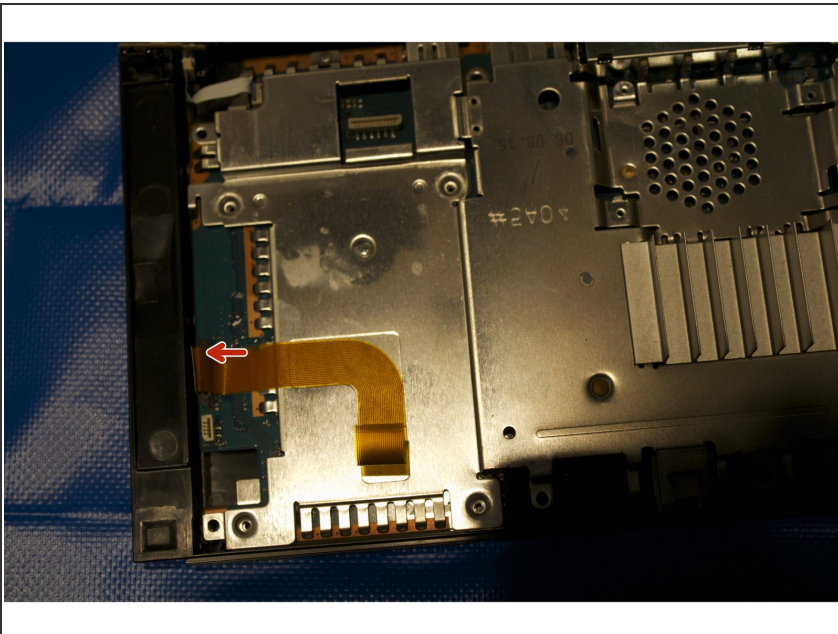
- Fan has red, black, and yellow wires under hold down tape. Remove the tape gently.
- Release the connector gently from motherboard.
- There three 1.6 mm screws around the base of the fan. Place both fan and screws on your project mat.

Step 7



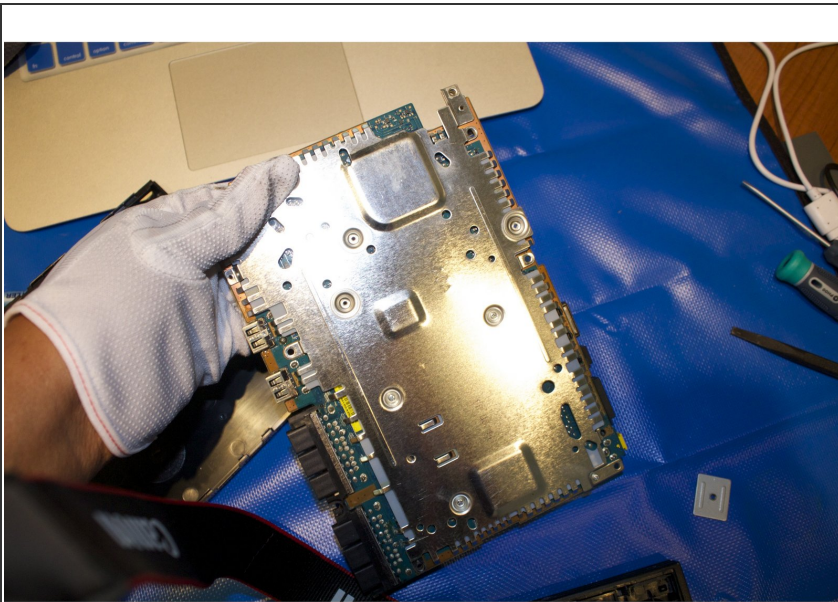
- Optical drive on the motherboard
- There are four 4.0 mm screws holding the optical drive.
- Remove the four screws and place the optical drive with it's screws on your project mat.

Step 8



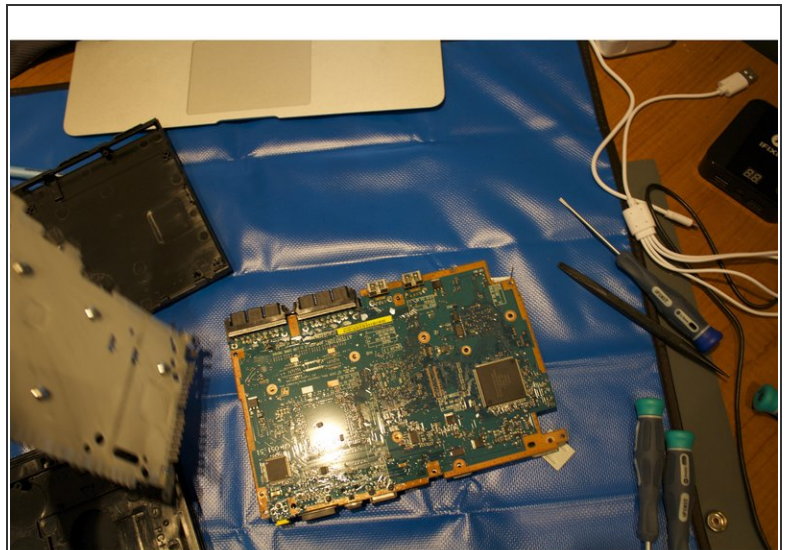
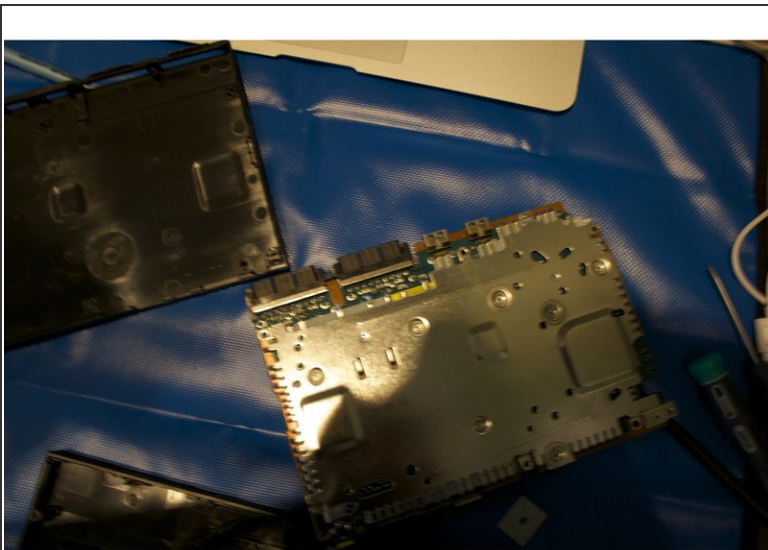
- There is a ribbon attached to the motherboard here. With your spudger, gently detach the ribbon from the motherboard's connection.

Step 9



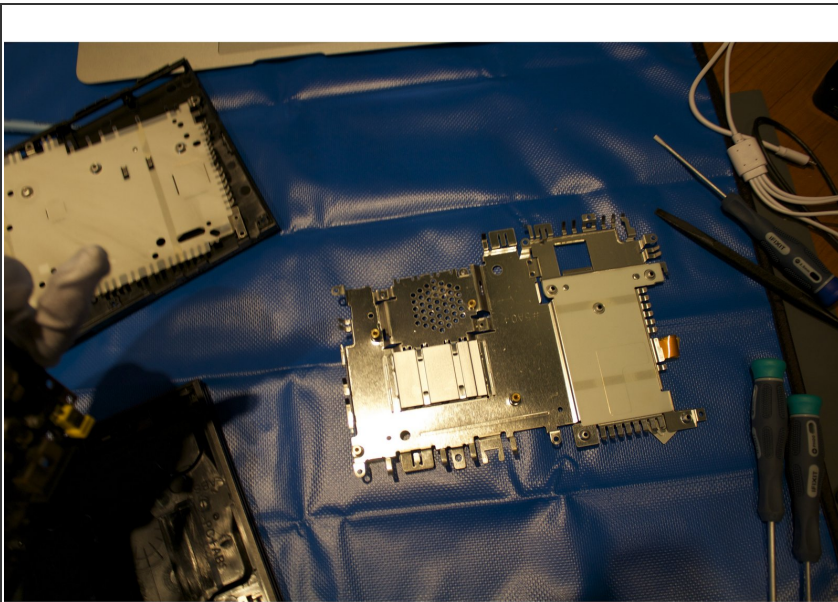
- Remove the single 2.4 mm screw located on the metal casing at the top of the motherboard.

Step 10



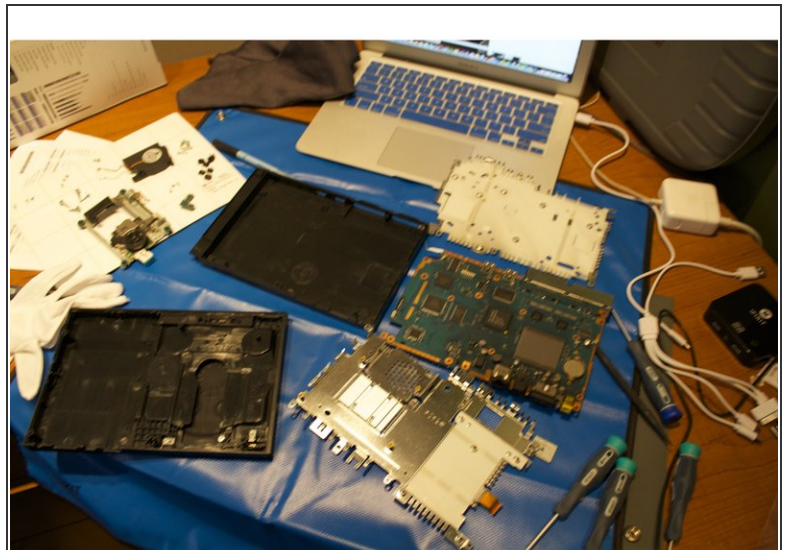
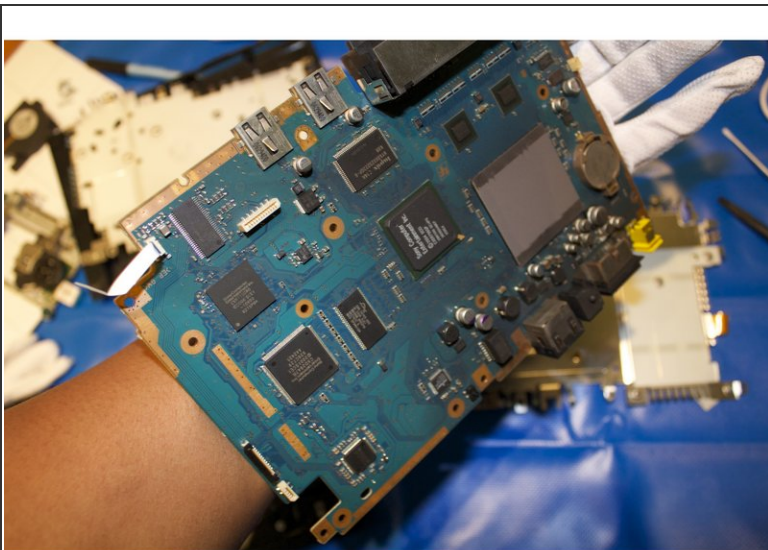
- Gently lift the metal casing from the motherboard. Place it to the side.

Step 11



- Flip the motherboard over and remove the five screws of the second metal casing.
- Place screws on project mat and casing to the side,

Step 12



- Motherboard of PS2
- Thank you for reading through this PS2 tear down. I hope this was helpful,