



Philips DPM8000 Display Replacement

Ensure to have your replacement display lying n...

Written By: Andreas Holl



INTRODUCTION

Ensure to have your replacement display lying next to you before you start removing the defective one.

You should also have a little bowl ready to set aside screws and other small parts.

TOOLS:

[Anti-Static Wrist Strap](#) (1)

[Bit Driver T4](#) (1)

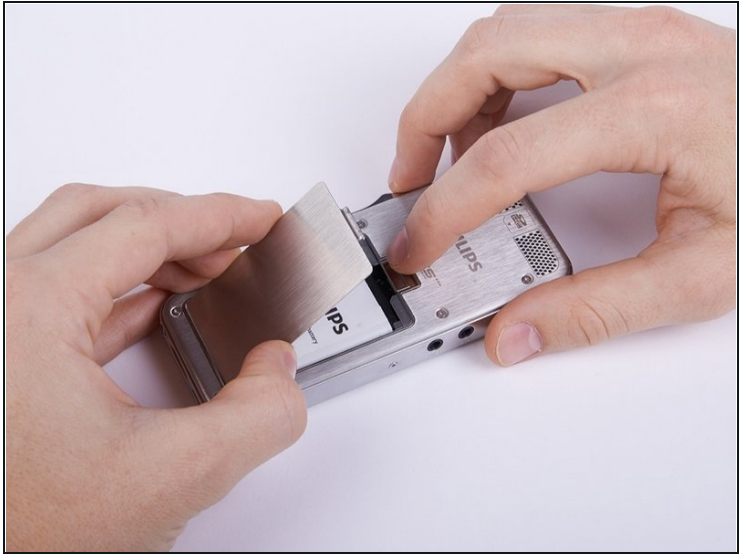
[Spudger](#) (1)

Step 1 — Anti-Static Wrist Strap



- ① Before you start disassembling your device make sure that it is turned off.
- Put on the [Anti-Static Wrist Strap](#) and clamp the end of the band to an unpainted spot of a radiator.

Step 2 — Battery Lid



- Remove the battery lid

Step 3 — Battery



- Remove the battery.

① The battery lid is designed to function as an instrument for this task.

Step 4 — Upper Ornamental Part



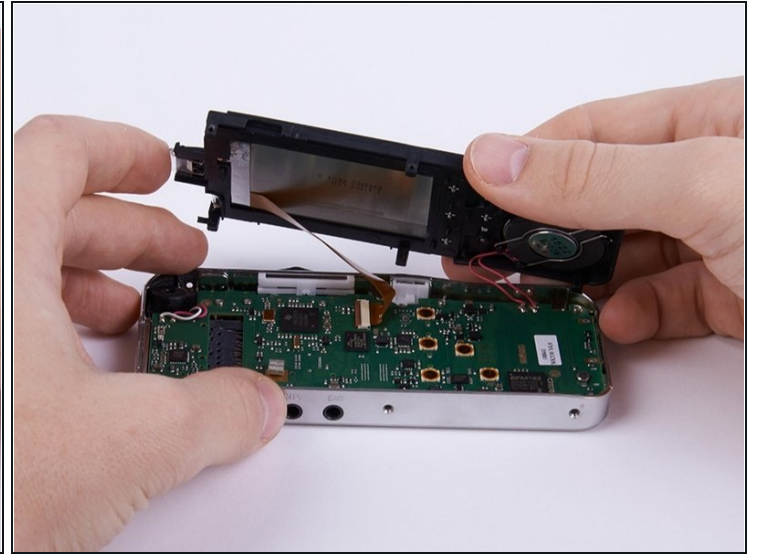
- Unscrew the six Torx #4 (5,3 mm) screws from both sides of the device
- ① Collect the removed screws in a bowl or something comparable, otherwise they might get lost.

Step 5



- Remove the upper ornamental part from the housing.
- ① If your fingernails are not long enough you can use a plastic opening tool.
- ☑ When reassembling the device be aware that the six shackles on the sides of the upper ornamental part need to be placed inside the frame.

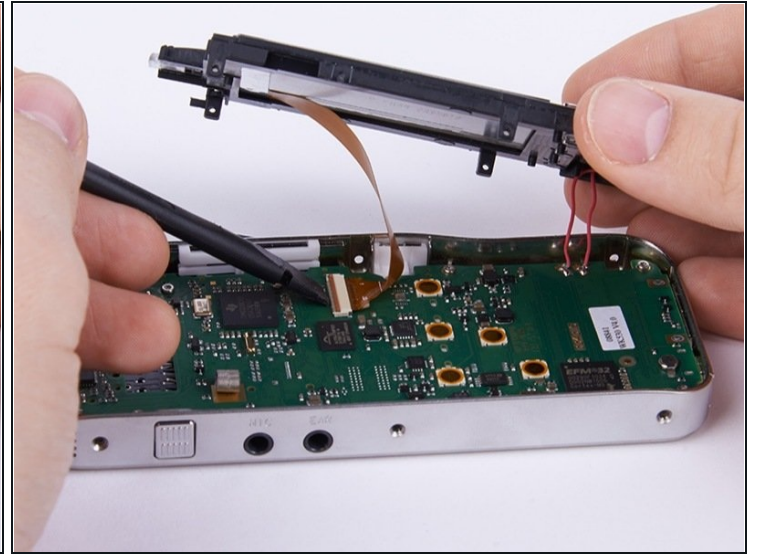
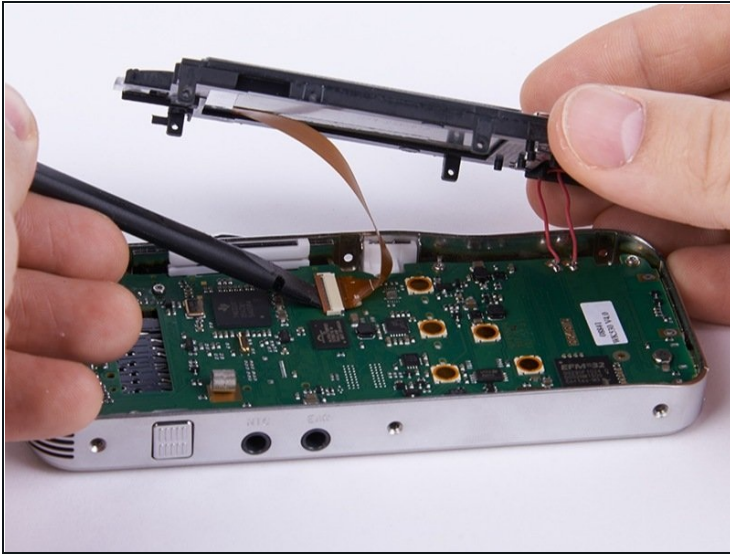
Step 6 — Housing/Display



- Lift up the housing.

⚠ The display as well as the speaker are connected to the motherboard. Therefore you need to be careful not to harm those connections.

Step 7

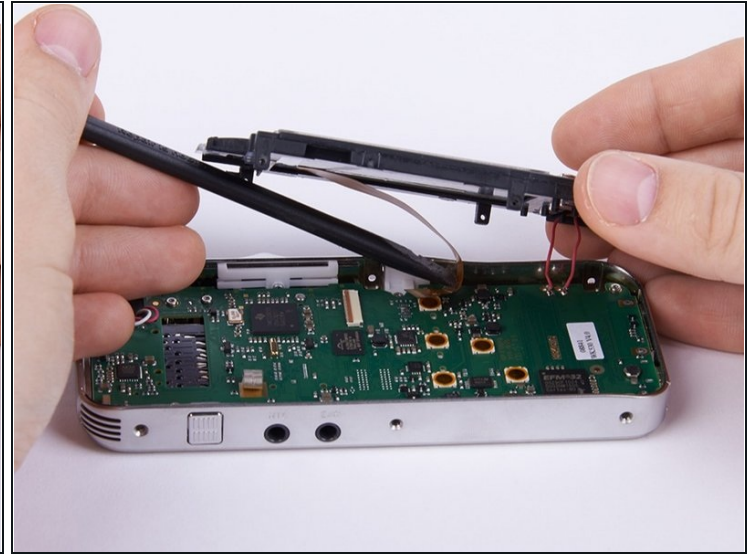
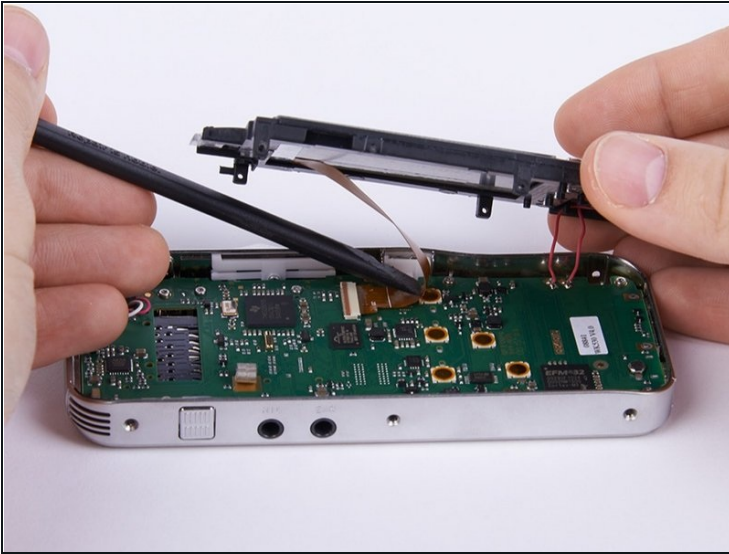


- Unlock the connection between display and motherboard by pushing open the brown cleat.

① It is recommended to use a spudger or a comparable tool for this step.

⚠ If the connection is not completely open, one of the involved components could easily be harmed.

Step 8



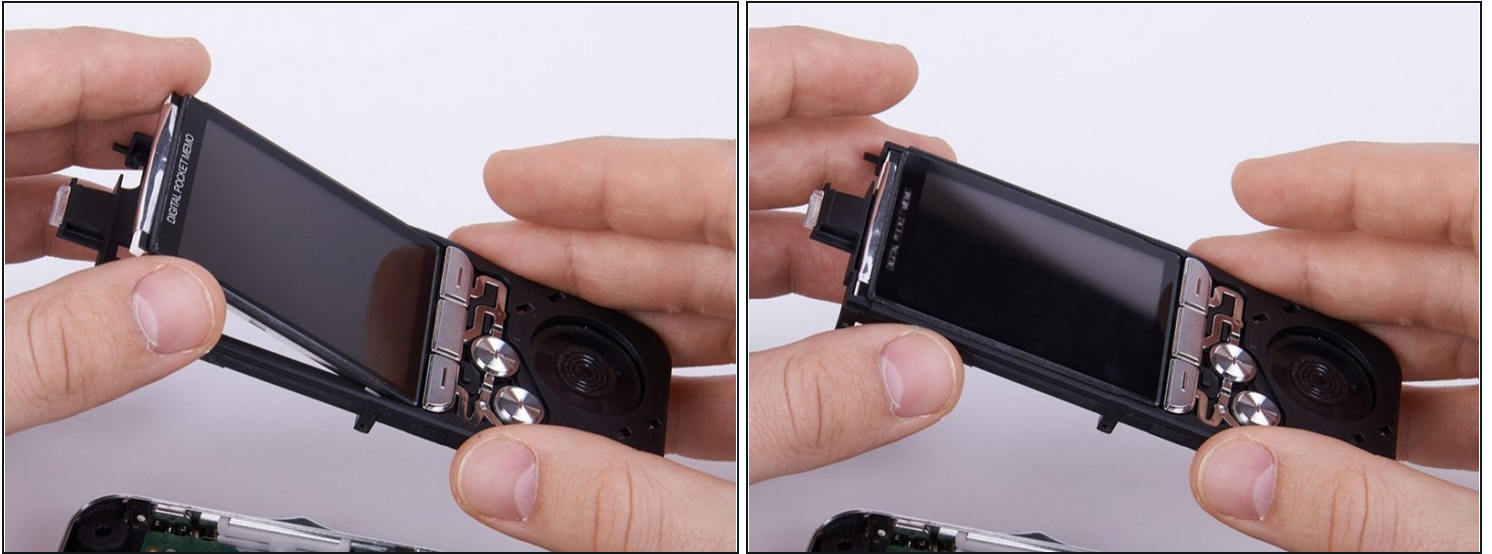
- Separate the connection by pulling out the display cable.
- ❗ If the cable does not come out easily, the connection is probably still locked.
- ★ When reconnecting the display to the motherboard don't forget to lock the connection, otherwise it will eventually come loose and you will have to redo the first eight steps of this guide.

Step 9 — Defective Display



- Abstract the defective display from the housing.

Step 10 — New Display



- Place the new display in the housing.
- ① Until the fall of 2015 the DPM8000 was delivered with a display and a separated display glass. Since then the display and the glass come as one part.

To reassemble your device, follow these instructions in reverse order beginning with step 8.