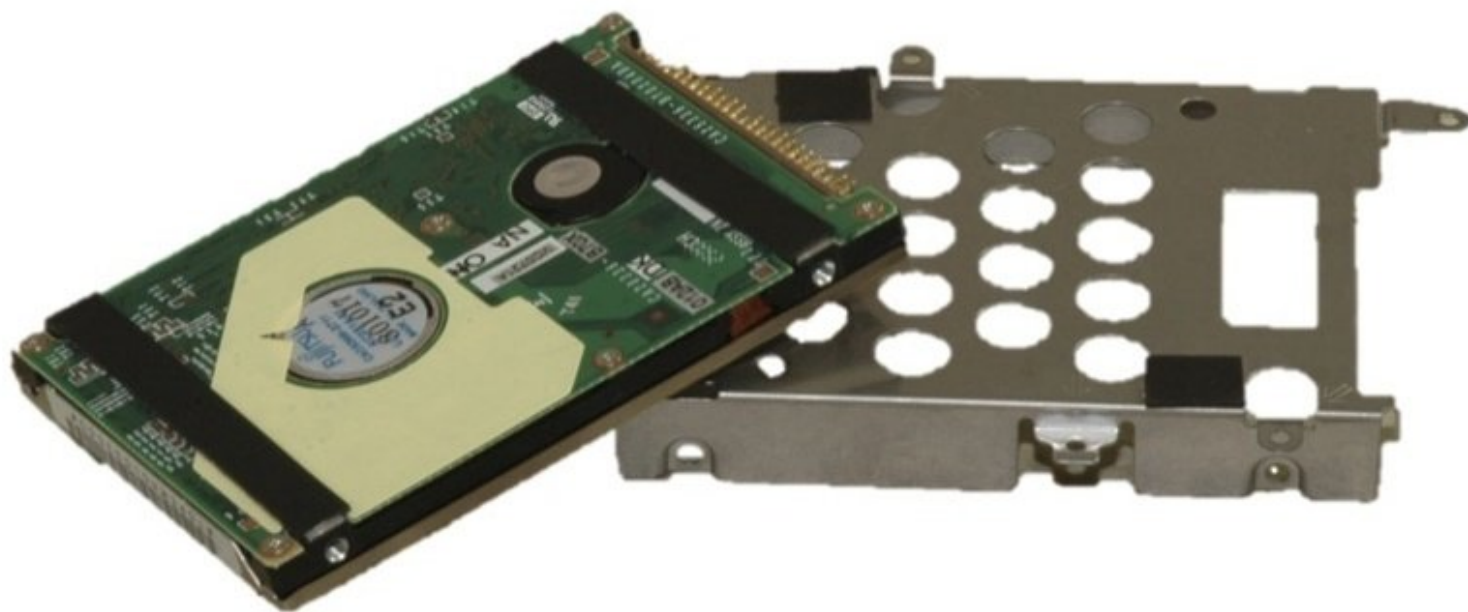




# Sony VAIO PCG-933A Hard Drive Replacement

This repair guide shows how to replace your...

Written By: Sara Lillard



# INTRODUCTION

This repair guide shows how to replace your hard drive.



## TOOLS:

- [Phillips #0 Screwdriver](#) (1)



## PARTS:

- [1 TB SSD](#) (1)
- [250 GB SSD](#) (1)
- [Crucial MX500 500 GB SSD](#) (1)
- [2 TB SSD](#) (1)

## Step 1 — Battery



- Turn the laptop upside down so that the top is sitting on a flat surface.
- If you are looking at the bottom of the laptop the battery is located on the front right side of the laptop; the opposite side from the floppy disk drive.

## Step 2



- As shown by the arrow, slide the plastic cover up and then pull out and downwards.
- You should now be able to pull the battery out.

## Step 3 — Keyboard




- Remove the four 16 mm screws bordering the edge of the laptop using a Phillips #0 screwdriver.

## Step 4



- Remove the 4mm screw on the right rear side of the laptop next to the audio ports using a Phillips #0 screwdriver.

 This will release the speaker grille.

## Step 5



- Flip the computer so the key board is facing up.

## Step 6



- Slide the blue speaker grille (located above the keyboard) to the right and gently pull upward. The grille will still be connected by a white electrical strip.
- Carefully pull out the white electrical strip. By doing this you will remove the speaker grille.



## Step 7



- Remove the 4mm screw in the center using a Phillips screwdriver.
- Carefully and slowly pull the green strip straight up (away from the laptop) to disconnect it. Make sure not to pull too hard to avoid breaking.
- The keyboard can now be removed.

## Step 8 — Hard Drive



- Remove the two 4mm Phillips screws in the center of the computer located on each side of the copper electrical strip.

## Step 9

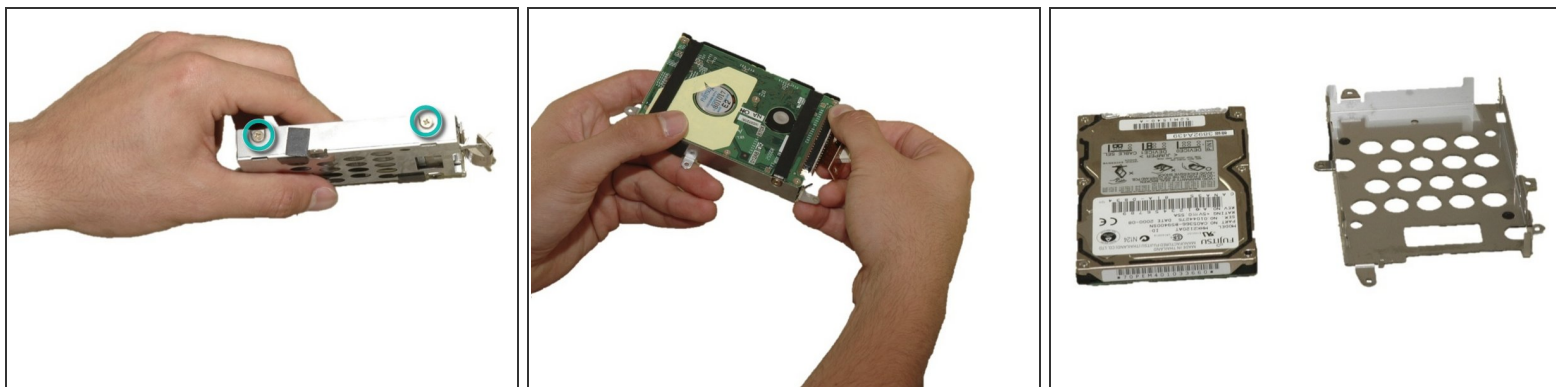


- Remove the four 4mm Phillips screws around the hard drive cage.

**⚠ WARNING: DVD drive is now loose as well.**

- Carefully lift the hard drive cage out.
- Carefully disconnect the copper strip to pull out the hard drive.

## Step 10



- Remove the four 4mm Phillips screws that hold the hard drive in the hard drive cage.
- Gently remove the hard drive from the cage.
- Gently remove the copper electrical strip from the harddrive.

To reassemble your device, follow these instructions in reverse order.