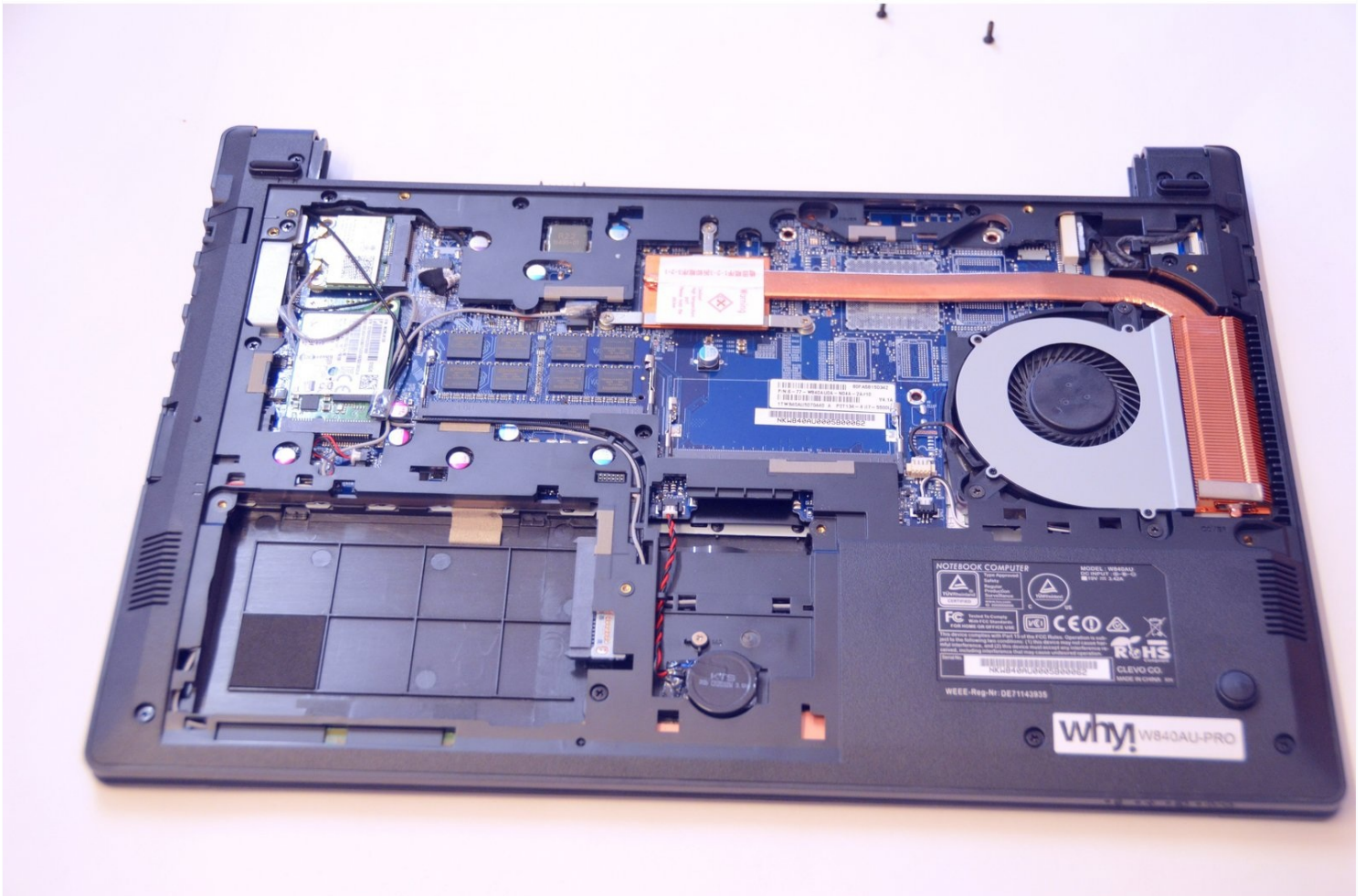




Archived

# Main access cover

Written By: Felice Suglia



---

## TOOLS:

Phillips #0 Screwdriver (1)

---

### Step 1 — Battery



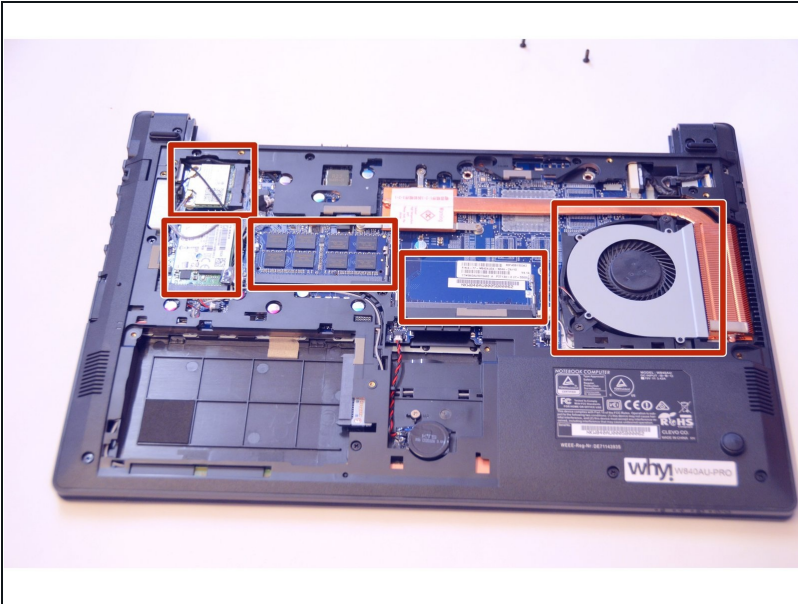
- Open the latch on the right side that secures the battery in place.
- Open the latch on the left side that secures the battery in place.
- Now remove the battery.

### Step 2 — Main access cover



- Using a Philips-head screwdriver remove highlighted screws.
- Look at the marking to see how to remove the access cover.
- Remove the access cover as shown by the marker.

### Step 3



- You now have access to all components of this laptop.

---

To put the device back together, follow these steps in reverse order.