



intel

FCC ID: PD97260H  
IC: 1000M-7260H

1 MAIN 2 AUX

Intel® Dual Band Wireless-AC 7260  
Model: 7260HMW

TA: H53062-001  
WFM: ACFDCE02F11B  
BDM: ACFDCE02F11F  
CMIIT ID: 2013AJ0758

003-130044 Made in China  
5 15-5 35 GHz  
Indoor use only  
D130020003

CCA4H13LP0320T1  
KCC-CRM-INT-7260HMW

72-03



## TOOLS:

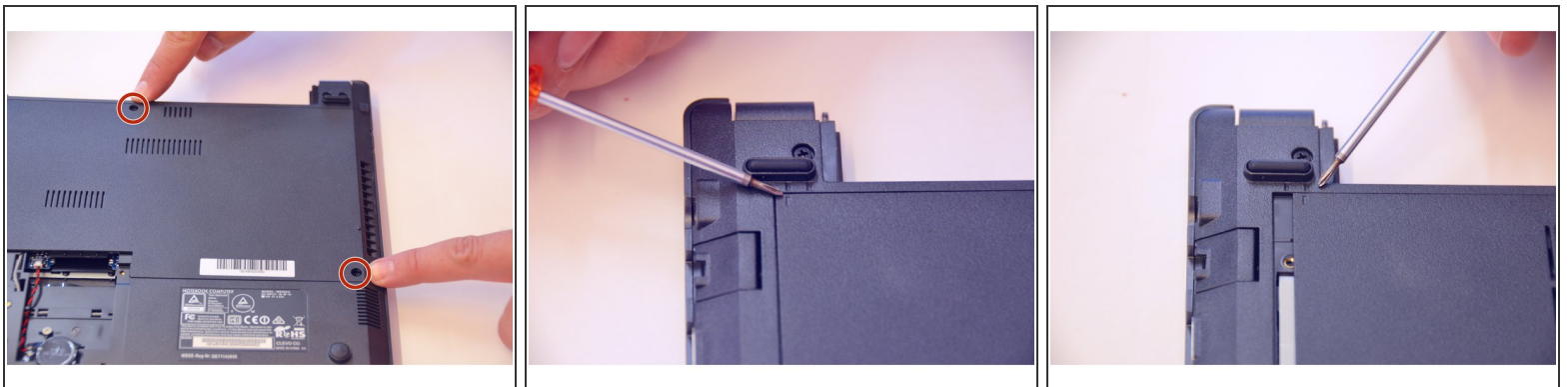
- [Phillips #0 Screwdriver](#) (1)
-

## Step 1 — Battery



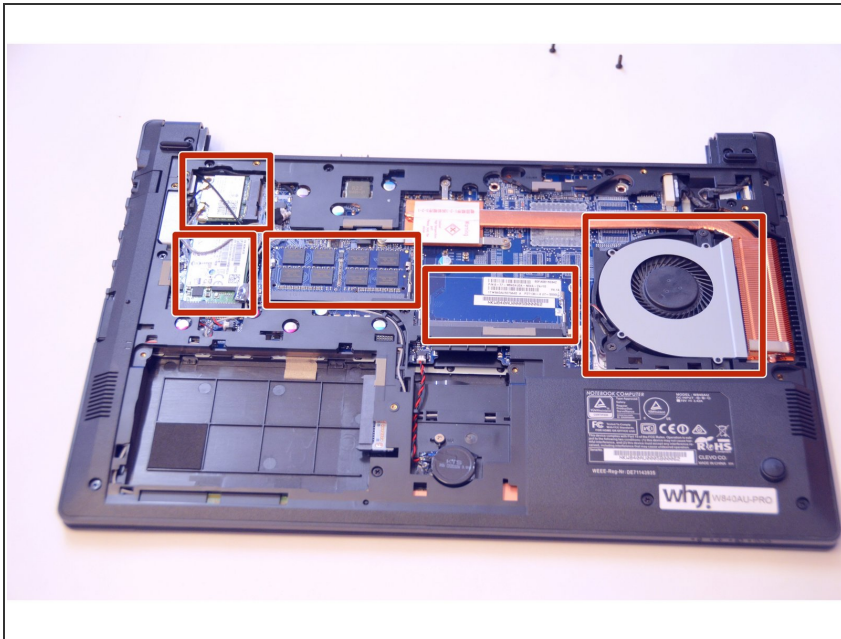
- Open the latch on the right side that secures the battery in place.
- Open the latch on the left side that secures the battery in place.
- Now remove the battery.

## Step 2 — Main access cover



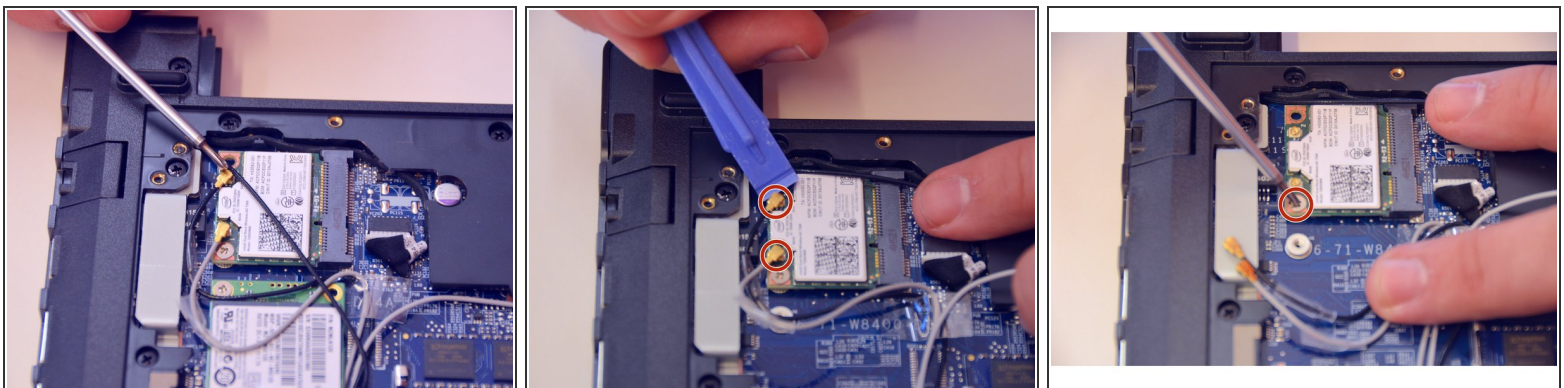
- Using a Philips-head screwdriver remove highlighted screws.
- Look at the marking to see how to remove the access cover.
- Remove the access cover as shown by the marker.

## Step 3



- You now have access to all components of this laptop.

## Step 4 — WLAN/Bluetooth Chipset



- Here is the chipset WLAN / Bluetooth.
- Carefully loosen the antenna plugs MAIN and AUX.
- Loosen the fixing screw with the Philips screwdriver.



- To assemble the device again, proceed in reverse order.