



WLAN / Bluetooth Card Replacement

Replacing the Intel Centrino Wireless Chipset with a component that meets the same standard.

Written By: Felice Suglia



INTRODUCTION

Replacing the Intel Centrino Wireless Chipset with a component that meets the same standard.



TOOLS:

- [Phillips #0 Screwdriver](#) (1)



PARTS:

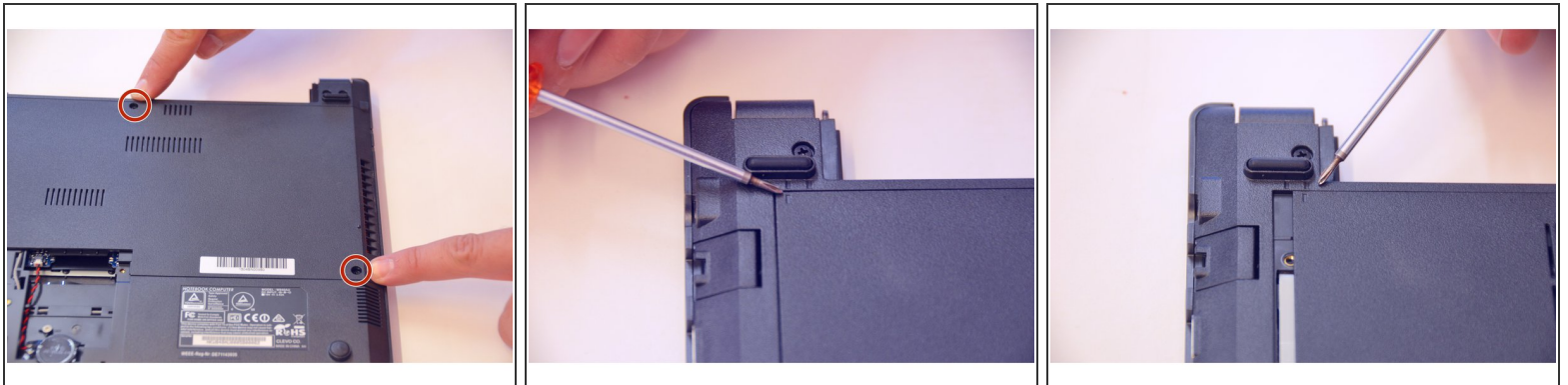
- [New Item](#) (1)
- [New Item](#) (1)
- [New Item](#) (1)
- [New Item](#) (1)
- [New Item](#) (1)
- [New Item](#) (1)
- [New Item](#) (1)

Step 1 — Battery



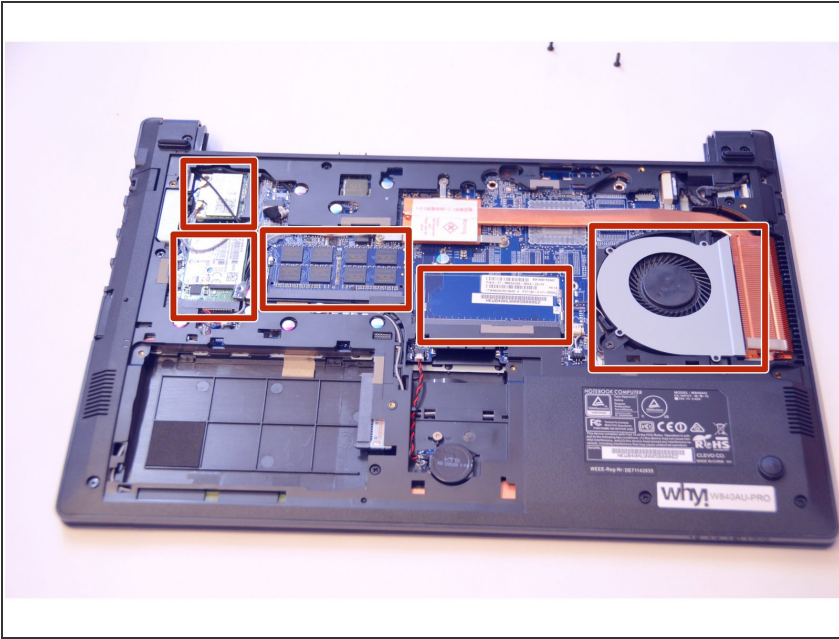
- Unlock the battery latch on the right.
- Unlock the battery lock on the left.
- Remove the battery pack from its slot.

Step 2 — Access to Components 2



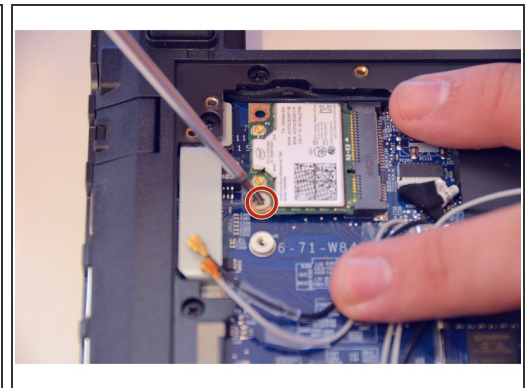
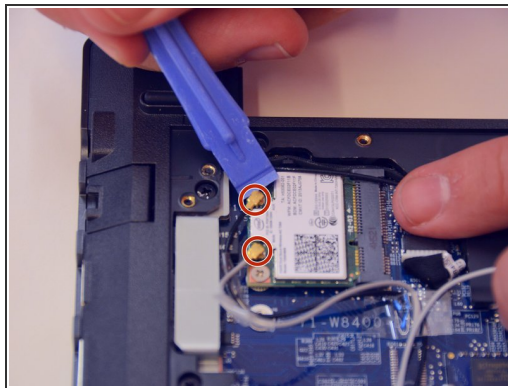
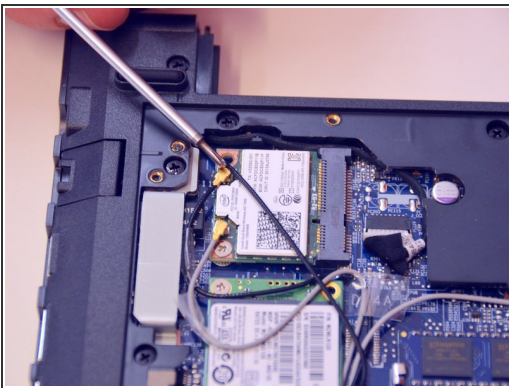
- Using the Philips # 0 screwdriver, unscrew the 2 screws of the top cover
- Check the marks indicating the direction in which the cover must be removed.
- Remove the bottom cover by removing it in the direction of the markers.

Step 3



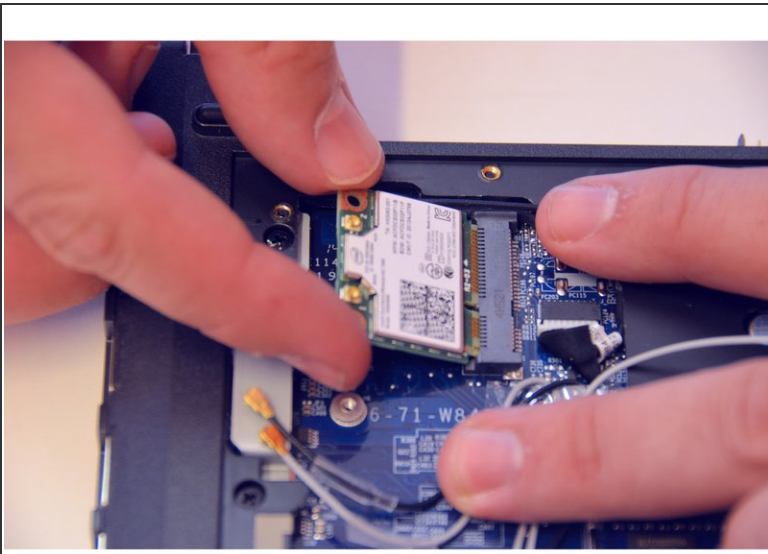
- Then appear the other components of the Laptop.

Step 4 — WLAN / Bluetooth card



- Here is the WLAN Chipset / Bluetooth
- Gently unplug the MAIN and AUX antennas.
- Unscrew the fixing screw with Philips # 0 screwdriver.

Step 5



- Slightly lift the chipset and remove it from the mSATA connector.
- Here is the chipset outside of its location.

To reassemble your device follow the following instructions in reverse order