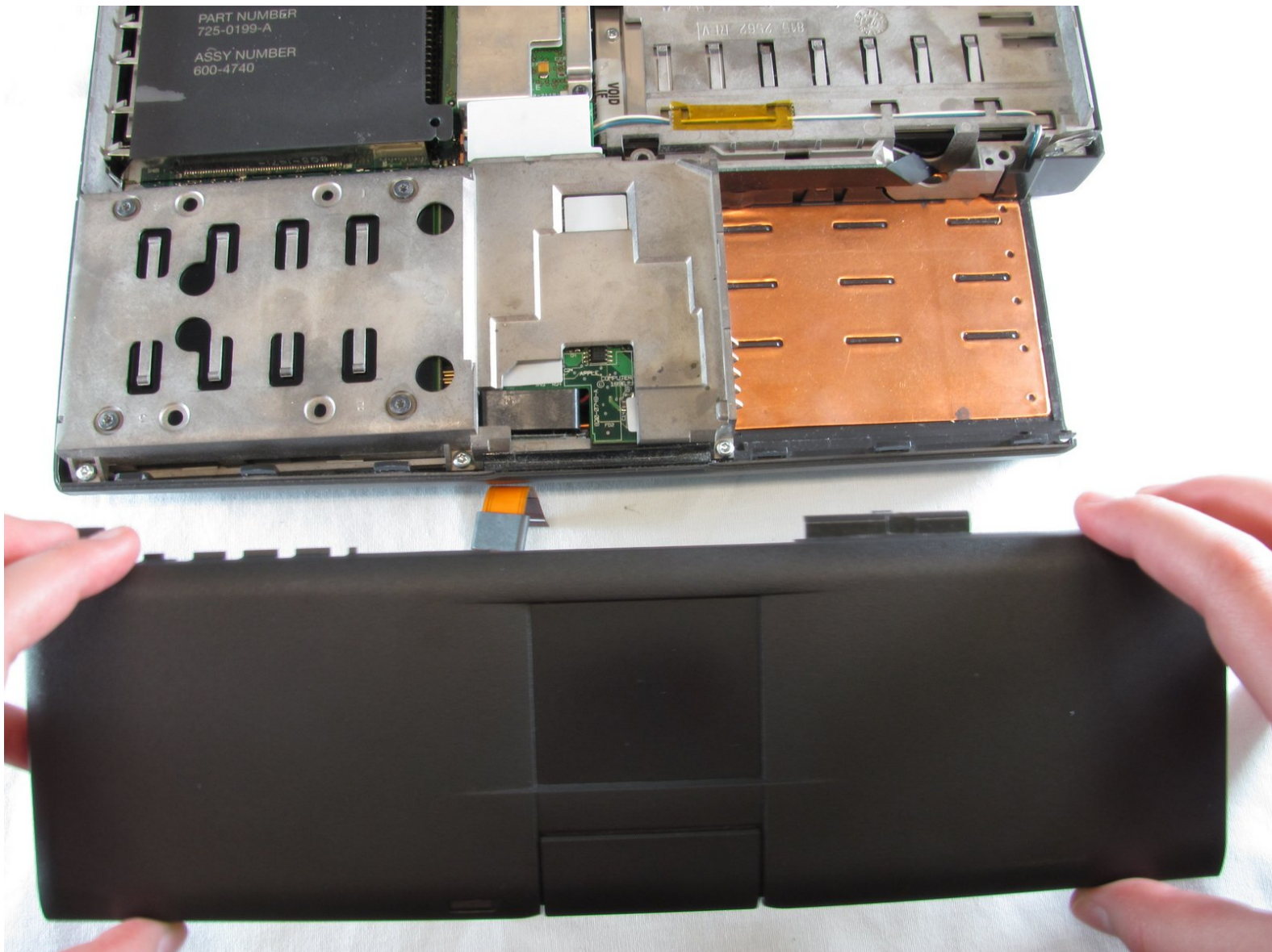




PowerBook 3400 M3553 Track Pad Panel Replacement

How to remove the track pad panel so you can access the track and the mouse buttons.

Written By: Michael Mondragon



INTRODUCTION

Removal of the track pad panel is necessary to reach the hard drive and track pad.



TOOLS:

- [Spudger](#) (1)
 - [T8 Torx Screwdriver](#) (1)
-

Step 1 — Battery



- Close the screen and turn the PowerBook over, orienting the computer upside down, using the label to guide you.

Step 2



- Hold the button on the front left side and slide the battery out.

Step 3 — Keyboard



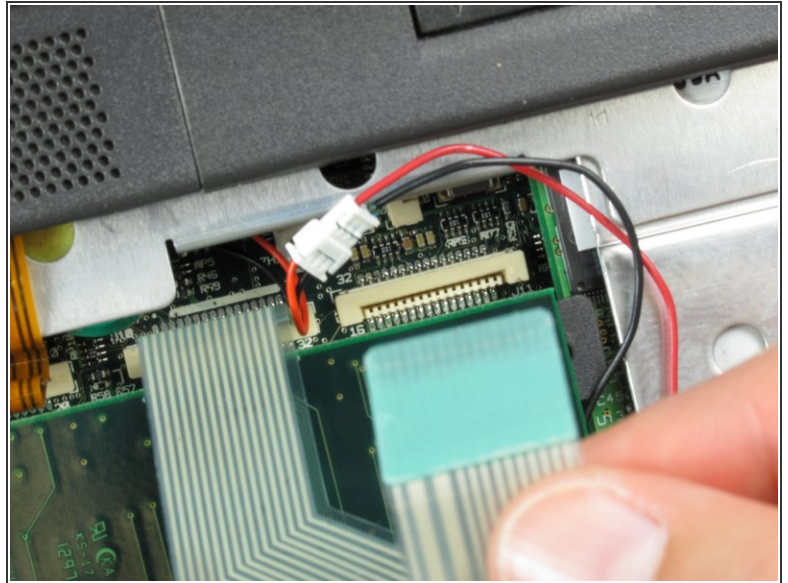
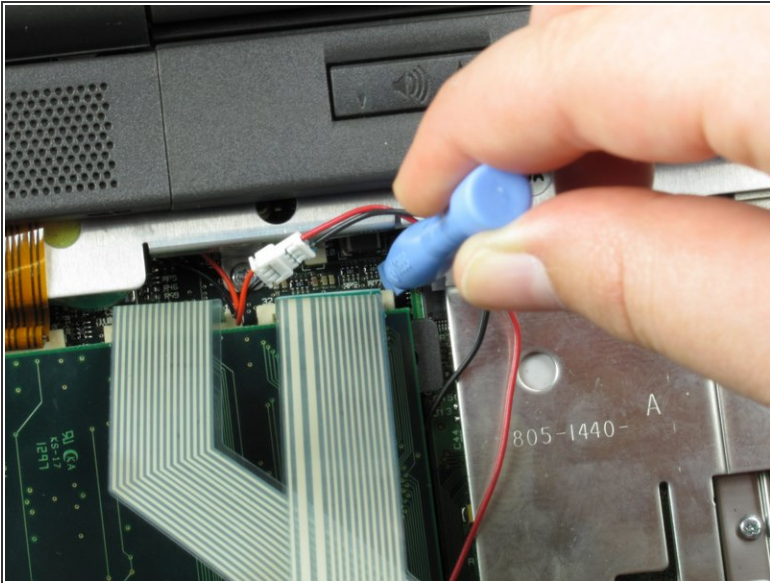
- With a Torx T8 screwdriver, remove the three Torx 24mm screws along the center of the back panel.

Step 4



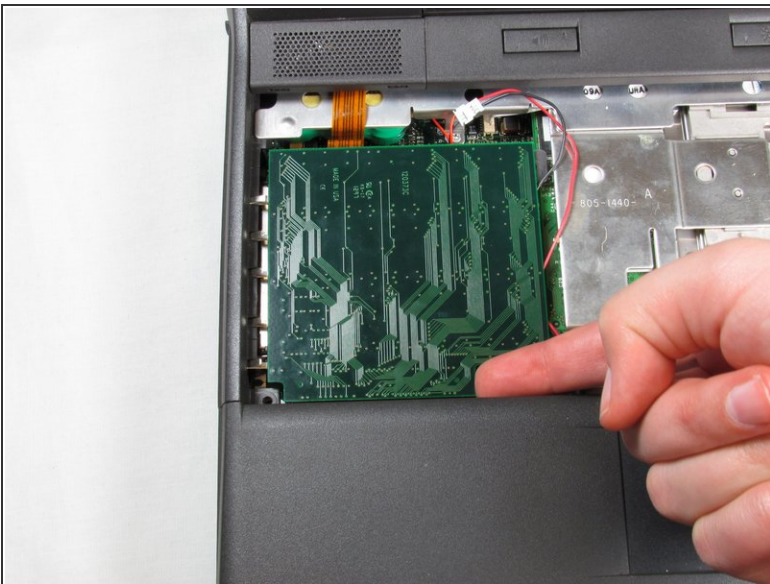
- Turn the computer over and open the display. You should see that the keyboard is loose.
- ⚠ Before attempting to remove the keyboard, note that a ribbon cable connects the keyboard to the logic board. Improper removal may damage your keyboard.
- Slightly lift the front of the keyboard up, and slide the keyboard towards yourself.
 - Carefully lift the top half of the keyboard and pull it towards yourself.

Step 5



- Loosen the ribbon cables connecting the keyboard to the computer by using a plastic opening tool to lift the tabs on either side of the cable port.
- Gently remove the ribbons from its tabs.

Step 6 — RAM



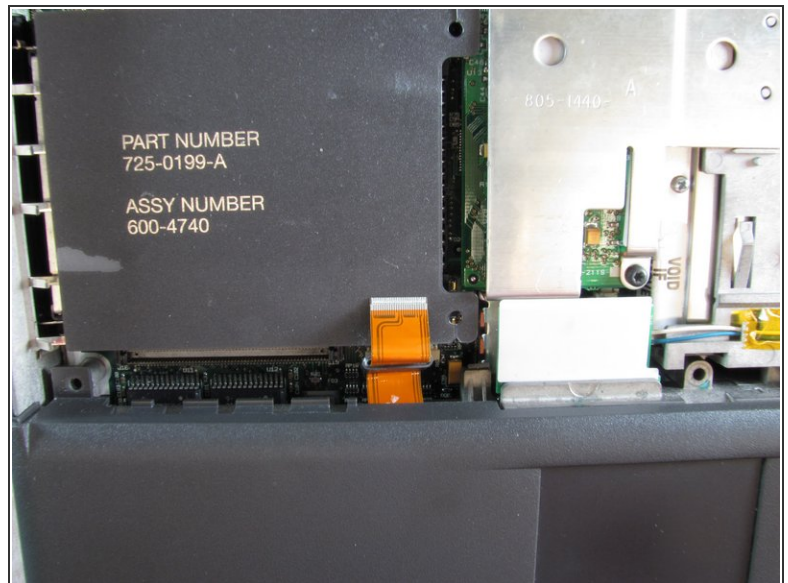
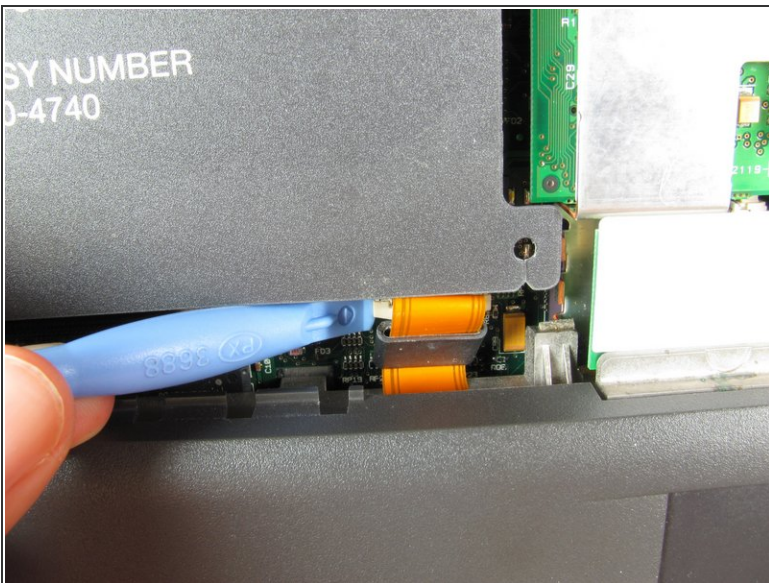
- Gently wiggle the RAM card to loosen the connection until it pulls free.

Step 7 — Track Pad Panel



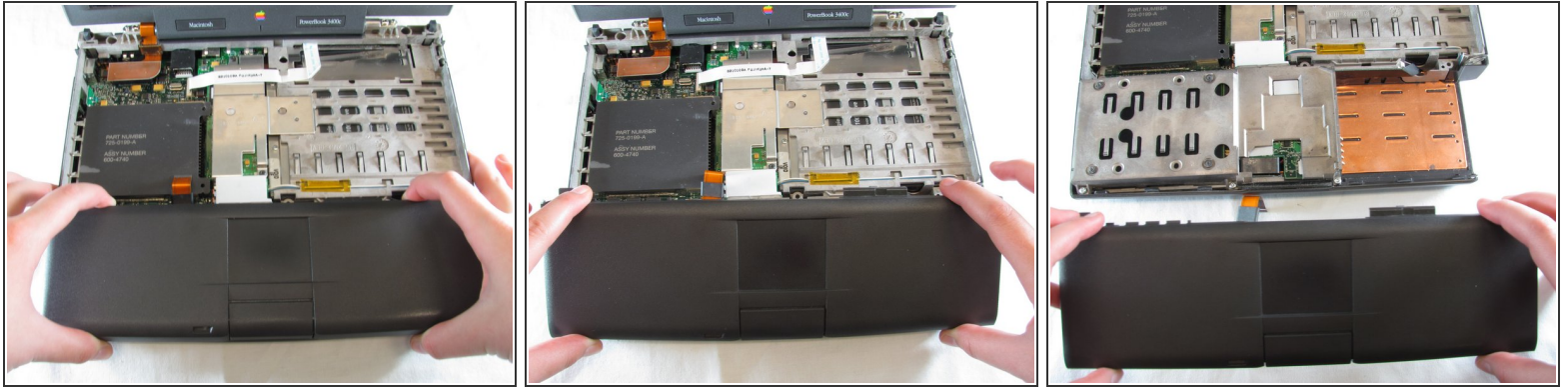
- Push the display screen back to give yourself enough space to remove the side panels.
- ⚠ Before removing the side panels, note that removing the side panels hastily will damage the underlying panel screw. However, this will not affect the functionality of your PowerBook.
- Remove the panels on either side by gently but firmly pulling up on them with both hands.

Step 8



- Use the plastic opening tool to lift up the tabs on either side of the ribbon cable port and then gently pull the ribbon cable free.

Step 9



⚠ WARNING: There is a high risk of breaking the tabs that lock the panel to the casing. Remove the panel slowly and cautiously to avoid damage.

- With your index finger and your thumb, squeeze the track pad panel to loosen the clamps. Then slide the panel towards yourself.

To reassemble your device, follow these instructions in reverse order.