



Garmin Nuvi 1390LMT Logic Board Replacement

This guide will show you how to replace the logic board in a Garmin Nuvi 1390LMT.

Written By: Trey Ulsh



INTRODUCTION

This guide will show you how to disassemble the Garmin Nuvi 1390LMT GPS to replace the logic board.



TOOLS:

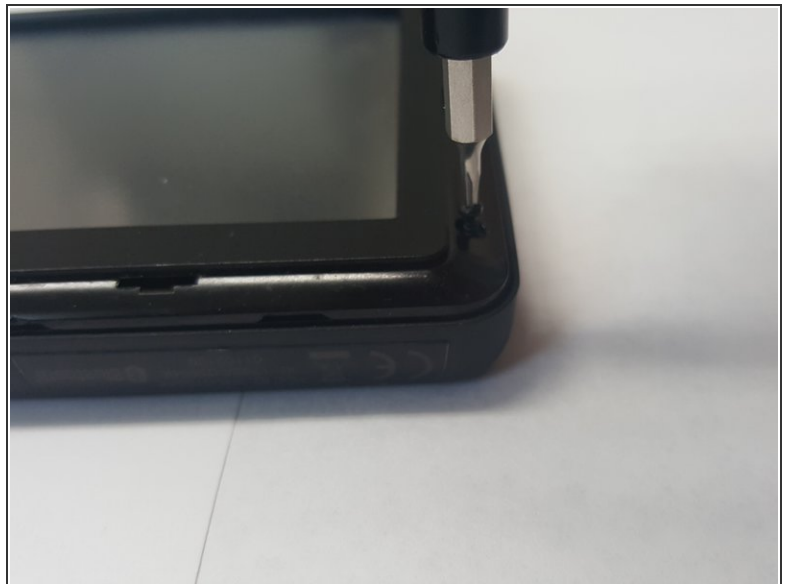
- [T5 Torx Screwdriver](#) (1)
 - [iFixit Opening Tools](#) (1)
-

Step 1 — Logic Board



- Snap the plastic cover off using a plastic opening tool.

Step 2



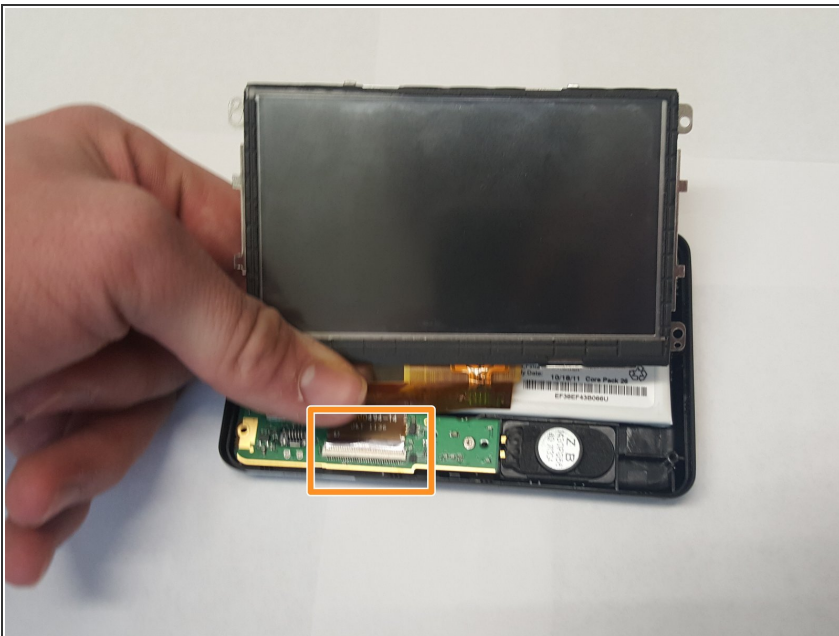
- Remove the four black 11 mm T5 torx screws.

Step 3



- Pop the screen cover off with a plastic opening tool.

Step 4



- Gently pull the wire ribbon connecting the screen to the logic board from the plug.
- ⚠ Be careful when unplugging the wire ribbon. It is very fragile.

Step 5



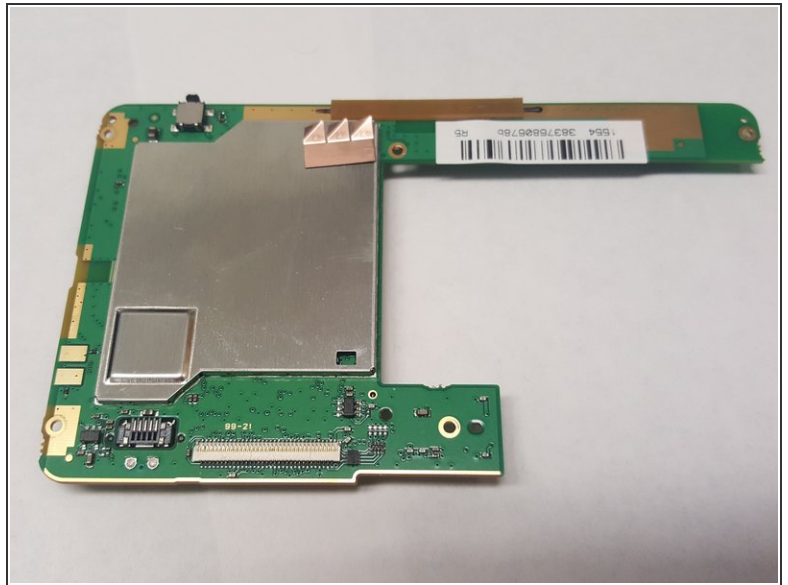
- Remove the two silver 5 mm T5 torx screws connecting the circuit board to the plastic casing.

Step 6



- Flip the logic board over.

Step 7



- Disconnect the harness between the battery and the logic board.

To reassemble your device, follow these instructions in reverse order.