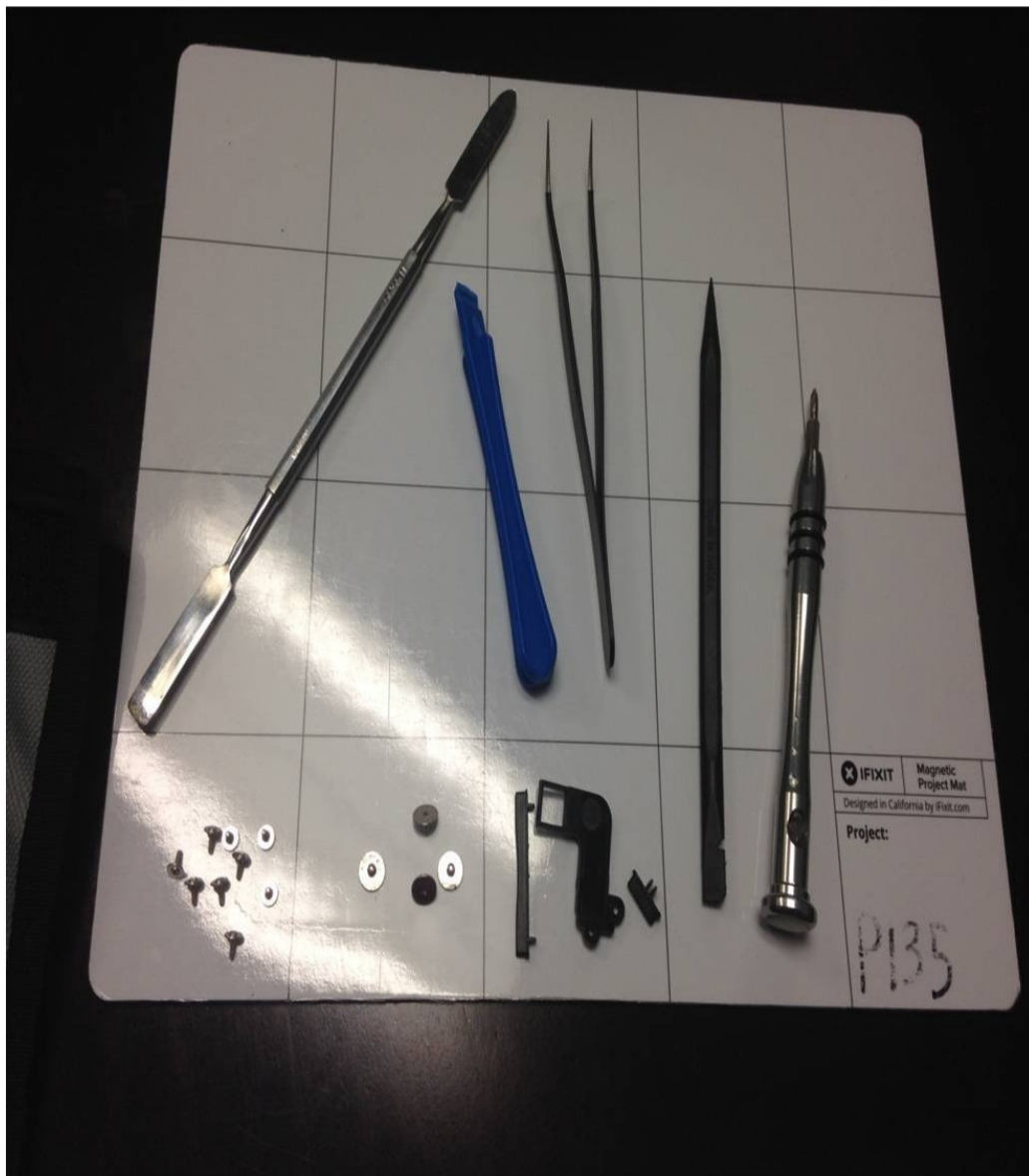




# Proscan Tablet Camera Replacement

This guide demonstrates how to open up the tablet and replace the camera component.

Written By: Cameron Denny





## TOOLS:

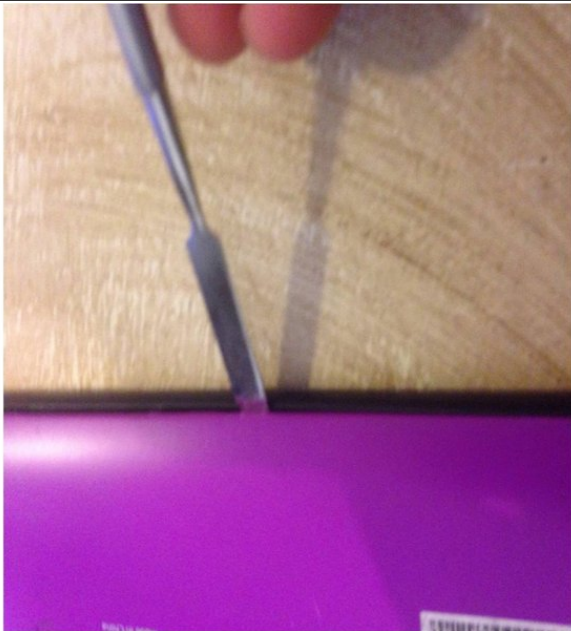
- [Metal Spudger](#) (1)
- [iFixit Opening Tools](#) (1)
- [Tweezers](#) (1)
- [Spudger](#) (1)
- [64 Bit Driver Kit](#) (1)

## Step 1 — Camera



- Tools necessary for task. Starting from the left to right Metal Spudger Plastic opening tool Precision tweezer Point pen tool Driver with bit size J0

## Step 2



- The backing of the tablet is fastened by simply snapping it in. Using the metal opening tool, pry between the plastic backing and the edge, but do not remove it yet. Work your way around until you have them separated.

## Step 3



- Once you have finished going around the edges of the tablet, look inside.

## Step 4



- You can directly locate and remove the camera component in the corner. Simply unscrew the piece and gently remove the tape wire.

To reassemble your device, follow these instructions in reverse order.