



# Repairing 1984-1989 Toyota 4Runner Idler Arm

This guide shows how repair an idler arm, once it is off the vehicle.

Written By: Colton Baker





---

## INTRODUCTION

The idler arm is an essential part of the steering and suspension system on a truck. This guide shows how to replace the most common broken part on an idler arm. Check this guide to learn how to take one [off](#).



### TOOLS:

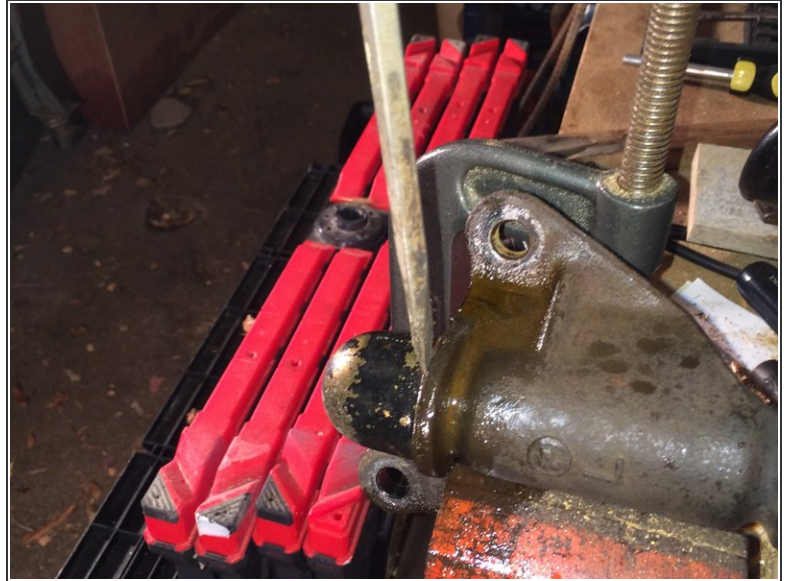
- [Hammer](#) (1)
  - [Socket Wrench](#) (1)
  - [Torque Wrench](#) (1)
  - [Small Vise](#) (1)
  - [Penetrating Lubricant](#) (1)
  - [Safety Glasses](#) (1)
  - [Latex or nitrile gloves](#) (1)
  - [Socket 19mm](#) (1)
  - [Flathead Screwdriver](#) (1)
-

## Step 1 — Repairing 1984-1989 Toyota 4Runner Idler Arm



- First the Idler arm must be removed from the truck. Another guide has instructions to [take the arm off.](#)

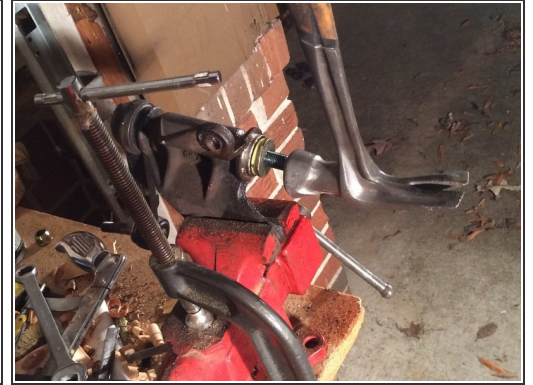
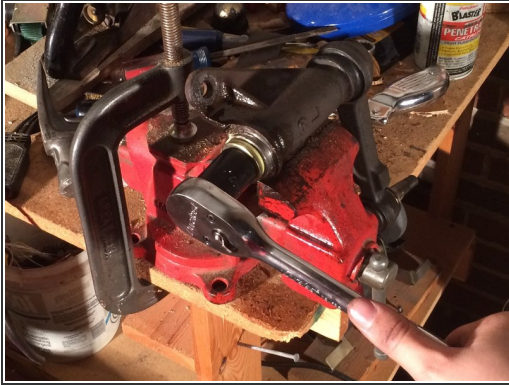
## Step 2



- Place the arm in a vise.
- Spray the cap with penetrating lubricant.
- Using a screw driver, tap the idler arm bracket cap off.
  - ❗ If it will not come off easily, then check out the [trouble shooting page](#).



### Step 3



- Using a 19 mm socket, take the nut off from inside the idler arm bracket.
- If the arm rotates in the bracket, then it can be taken out of the vice and placed on the ground.
- Once on the ground, your foot can be used to stop the arm from rotating and enable you to put torque on the nut.
- Once the nut is off, the arm can be gently tapped out of the bracket.

## Step 4



- Remove the oil seal.
- Remove the plastic bushings with a flat head.
  - Both bushings and oil seals should be removed and replaced.
- Fill the bracket with MP grease and then put the arm back into the bracket.
  - Wipe off any grease that squeezes out of the bracket.

To reassemble your device, follow these instructions in reverse order.