



Garmin Nuvi 1390LMT Battery Replacement

This guide will show you how to replace the battery on a Garmin Nuvi 1390LMT.

Written By: Trey Ulsh



INTRODUCTION

This guide will show you how to disassemble the Garmin Nuvi 1390LMT GPS to replace the battery.



TOOLS:

- [iFixit Opening Tools](#) (1)
- [T5 Torx Screwdriver](#) (1)



PARTS:

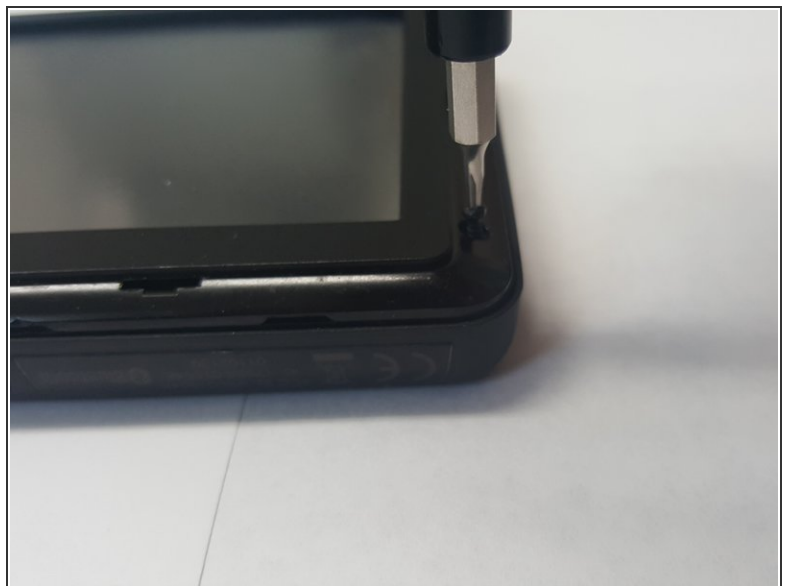
- [Garmin Nuvi 1300/1340T Pro/1350/1370/1375/1390 Replacement Battery](#) (1)

Step 1 — Battery



- Snap the plastic cover off using a plastic opening tool.

Step 2



- Remove the four black 11 mm T5 torx screws.

Step 3



- Pop the screen cover off with a plastic opening tool.

Step 4



- Flip the screen over out of the case.

⚠ Be sure not to twist or damage the wiring harness connecting the screen to the circuit board.

Step 5



- Remove the two silver 5 mm T5 torx screws connecting the circuit board to the plastic casing.

Step 6



- Flip the circuit board over onto the screen.

Step 7



- Disconnect the harness between the battery and the circuit board.

Step 8



- Peel the battery from the plastic back with a plastic opening tool.



It is connected with a glue so be careful.