



# Samsung SPH-M360 Keyboard Replacement

This guide will show the user how to remove the keyboard from a Samsung SPH-M60.

Written By: Hunter Parker



---

# INTRODUCTION

Performing this guide will require no more than a finger.



## TOOLS:

- [Phillips #0 Screwdriver](#) (1)
  - [iFixit Opening Tools](#) (1)
-

## Step 1 — Battery



- Locate the arrow on the panel of the rear side of the phone.
- Use one or two fingers to apply light pressure downwards on the rear panel and push or pull in the direction of the arrow.

## Step 2



- Place finger inside the small semi-spherical slot near the top of the battery.
- Lightly pull the battery away from the phone. This should not require much effort.

## Step 3 — Casing



- Remove the four screws on the corners of the casing.

⚠ The volume and camera buttons may fall out

## Step 4



- Starting near the top of the casing, use the plastic opening tool to gently pry the casing open.
  - ⓘ The case should require some effort to pry open, but do not use excessive force for risk of breaking the rear panel.
- Slowly work the plastic opening tool around the edge of the casing, gently prying it around at all sides.



## Step 5



- Once the casing has been fully pried off of the phone, it should be easily removed by hand.
- ⚠ The buttons for the camera and volume may fall out while removing the casing. Be careful not to lose the small pieces.

## Step 6 — Logic Board



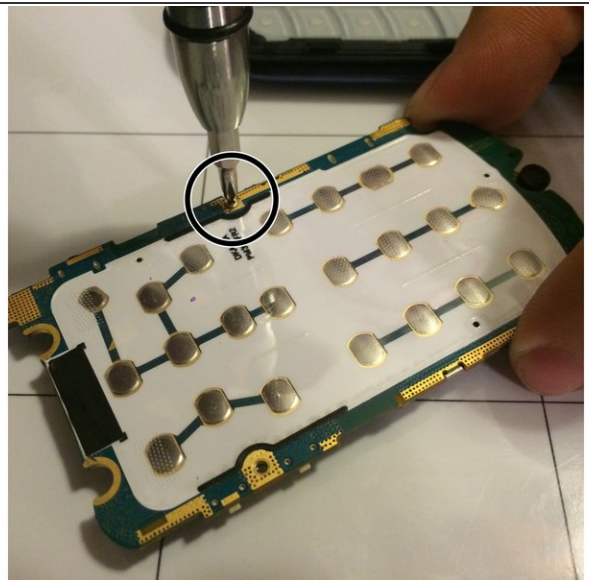
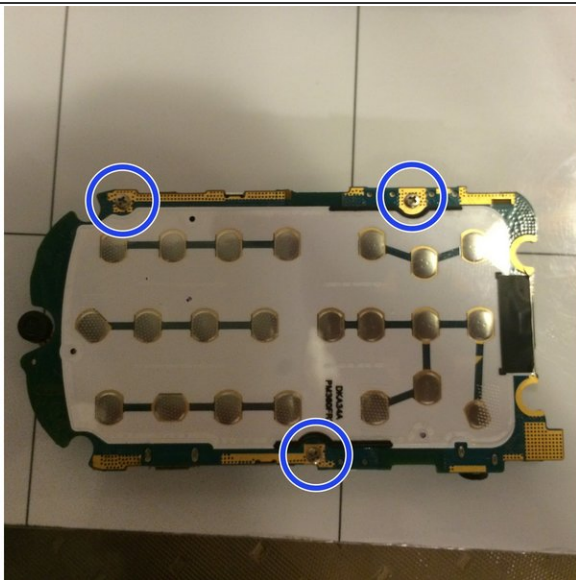
- Use the plastic opening tool to gently detach the golden strip from the logic board.
- The strip should detach easily with little force required.

## Step 7



- Use the plastic opening tool to pry the logic board out of the phone case from the bottom area of the phone.

## Step 8



- Flip the logic board over and locate the three screws along the edges.
- Carefully unscrew the three screws to remove the panel covering the logic board.
- ⚠ Be careful with the screws after unscrewing them because they are small and easy to lose.



## Step 9



- Flip the logic board back over and use the plastic opening tool to remove the metal cover on the logic board.
- This will not require much force, so be gentle.

## Step 10 — Keyboard



- Flip open the phone so that the text on the keyboard is showing.
- Place one or two fingers on the text side of the keyboard and apply pressure until the keyboard has been completely detached from the phone casing.



To reassemble your device, place the keyboard back into the phone casing and apply light pressure to ensure that it is back in place.