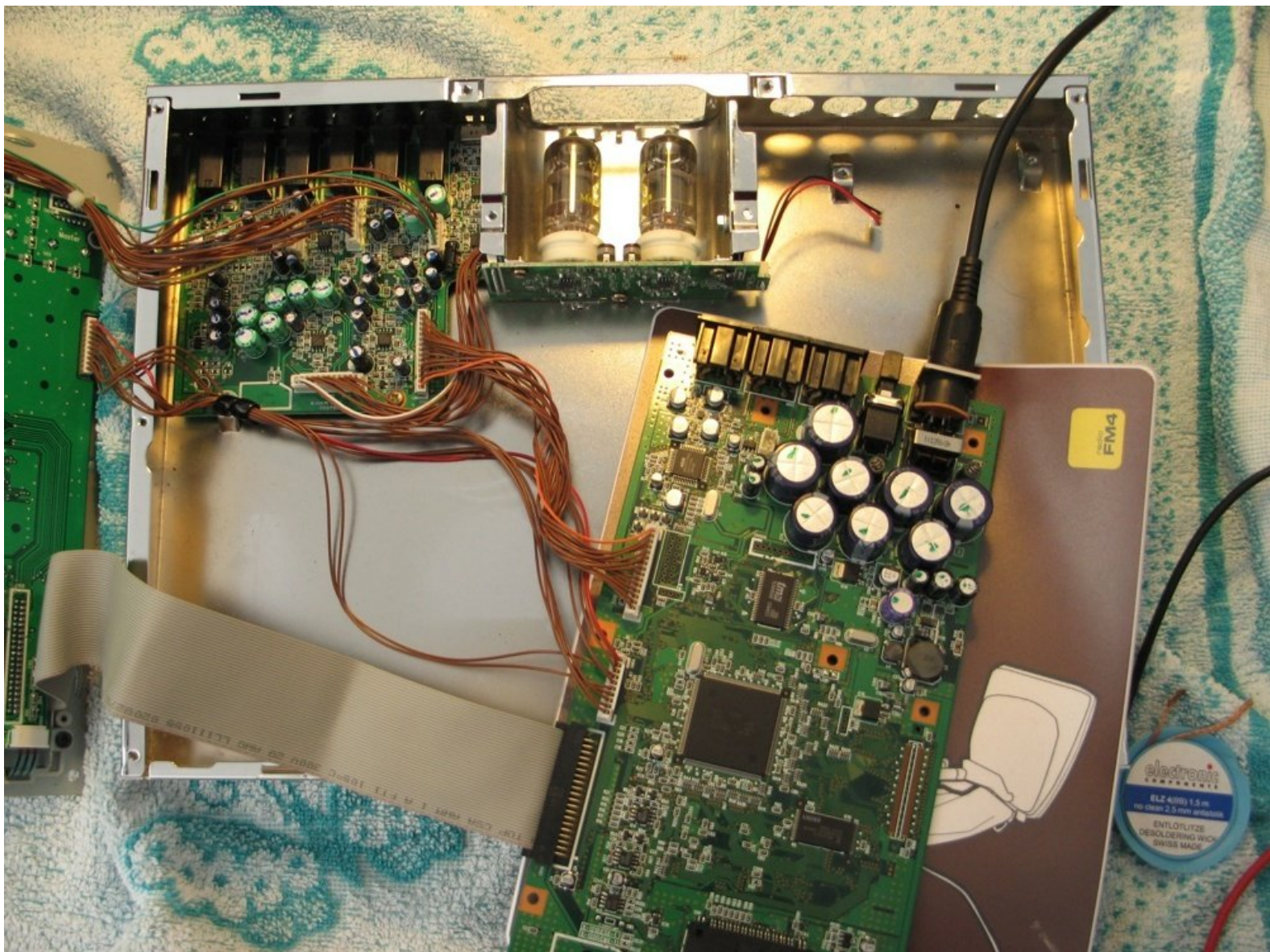




Korg Electribe SX (ESX) fuse Replacement

Is your Electribe SX showing an amber glowing LCD but without any characters? Then this repair instruction is for you.

Written By: Christian



INTRODUCTION

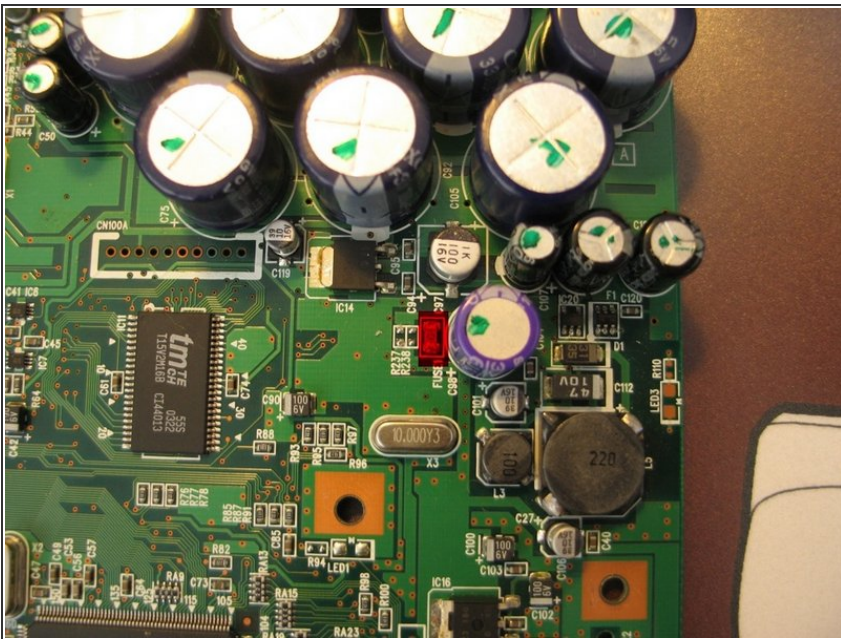
In this repair instruction you will first open the Electribe SX. Then you will find the fuse responsible for the problem. After this we will do a quick cross-check **if** the fuse is the problem. If yes, then we will either do a workaround or replace the fuse.

Step 1 — fuse



- Unplug all cables and the power supply. Remove all Knobs by pulling on them. Then unscrew all screws on the front using an allen key. You can remove the PCBs as well, as shown on the picture, but you don't have to.

Step 2



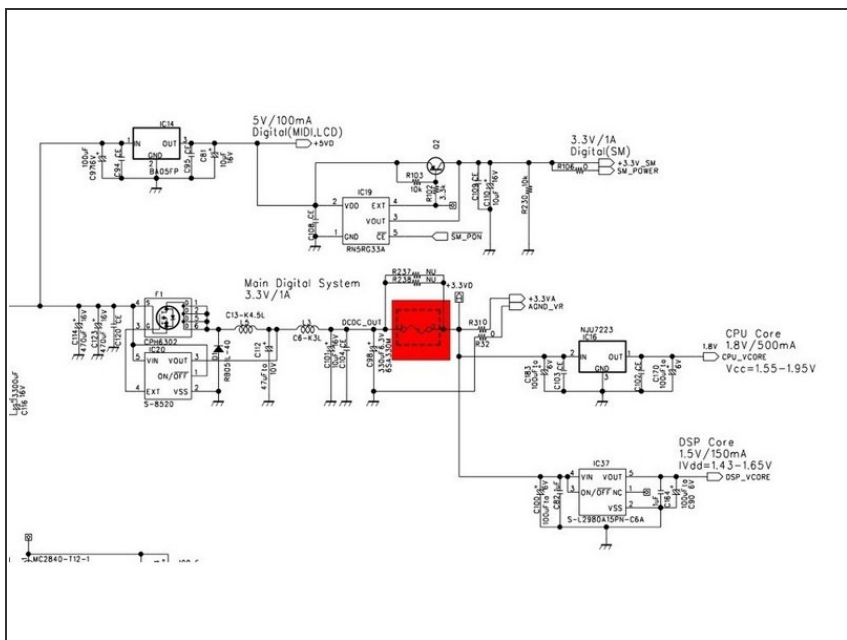
- Look on the PCB for the red marked device. It can be found below a lot of big capacitors on the right PCB. This

is the fuse which might be broken.

To check this you may either:

- Check the fuse for continuity when the ESX is powered off. There must be continuity, but if the fuse is broken, there will be not. Or you may...
- ...check for 1,8V on both sides if the ESX is switched. You have to apply power and switch the ESX on of you do this. The voltage ist around 24V, which should not be deadly, but can be destroy things very quick if you are not careful. Try this if you know what you are doing. Isolate the PCB.
- If you are sure that the fuse is not conducting any more you have two options:
- You can bridge the fuse using a wire. Solder an isolated wire on both sides of the device. This is also a handy workaround to see if the ESX works again after you do this.
- You can replace the fuse. This is more complicated because you a) need a new fuse with the correct specs and b) you need soldering tweezers, two soldering irons or a quick hand at soldering both terminals of the fuse. At the moment I can not help at the rating of the replacement fuse.

Step 3



- Here is the fuse marked red in the EMX Service Manual from Korg. The part we are dealing with seems to be identical with the ESX

Arbeite die Schritte in umgekehrter Reihenfolge ab, um dein Gerät wieder zusammenzubauen.