



# Motorola SLVR L9 Front Panel Replacement

Written By: Ivan Sarabia





## TOOLS:

- [iFixit Opening Tools](#) (1)
- [T6 Torx Screwdriver](#) (1)



## PARTS:

- [Motorola SLVR L9 Front Panel](#) (1)

## Step 1 — Battery



- Turn the phone over so that the back of the phone is facing up.

## Step 2



- Press down on the silver battery cover latch located at the top of the phone.
- Pull the battery cover down and away from the latch; then lift it up to remove the battery cover.



### Step 3



- To remove the battery, pull the battery up from the bottom center.

### Step 4 — Camera Lens Cover



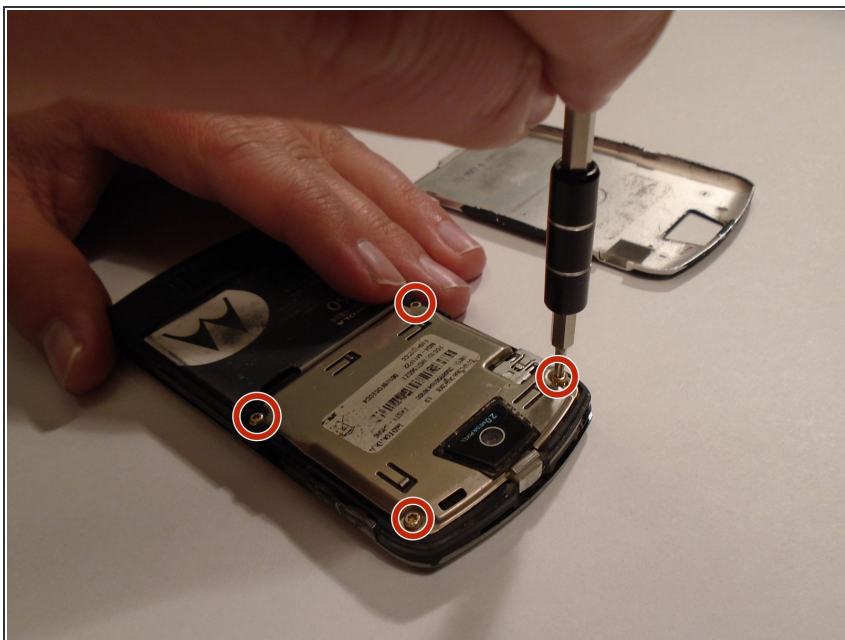
- Turn the phone over so that the back of the phone is facing towards you.

## Step 5



- Press down on the battery cover latch located at the top of the phone.
- Pull the battery cover down and away from the latch; then lift it up to remove the battery cover.

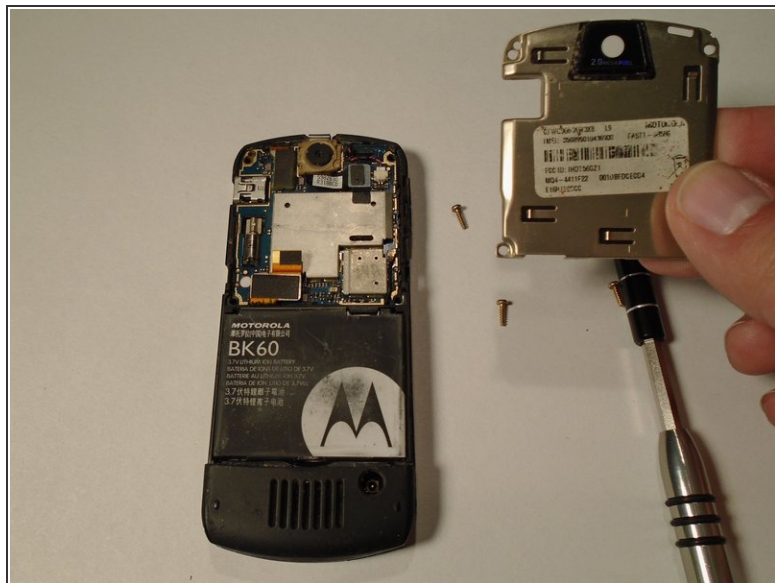
## Step 6



- Remove the four housing screws (1/8") from each corner of the transceiver PC board shield. Use a screwdriver with a T6 Torx screwdriver head to turn the screws counter-clockwise (left).

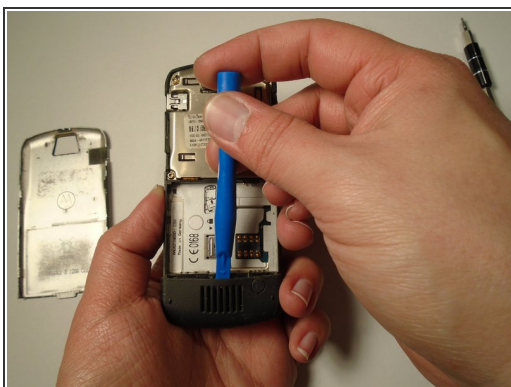


## Step 7



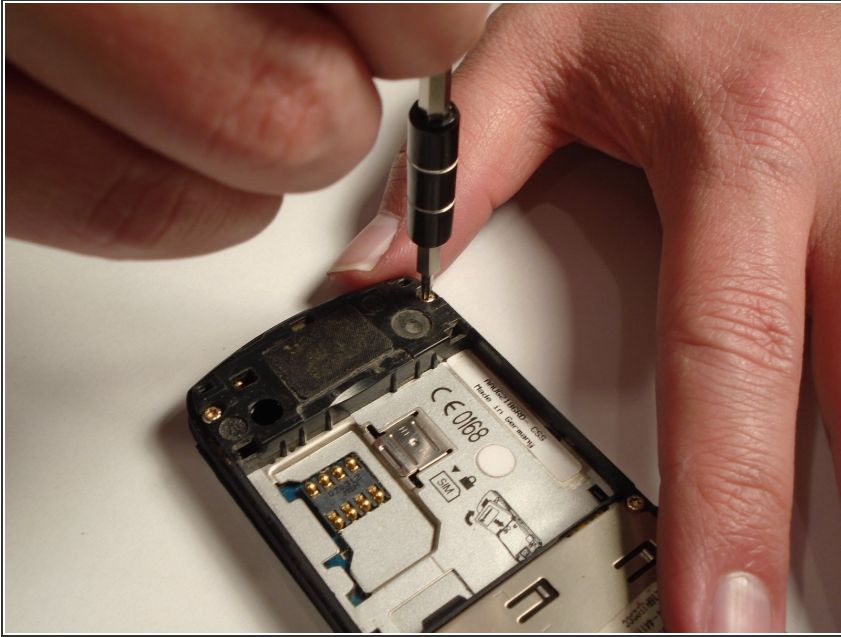
- Once you have removed all of the screws, lift the transceiver PC board shield up to remove it.

## Step 8 — Antenna Cover



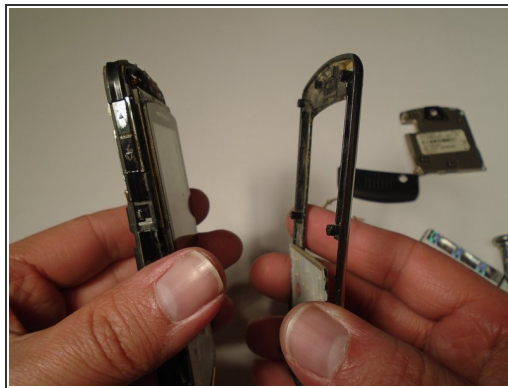
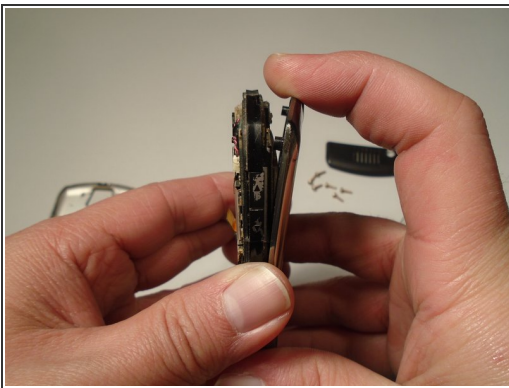
- Use the plastic opening tool to loosen the cover latch.
- Once the cover latch has been loosened, gently pull the cover latch off of the device.

## Step 9 — Front Panel



- Use a screwdriver with a T6 Torx screwdriver head to turn the screw counter-clockwise (left).

## Step 10



- Using the grooves around the edge of the phone, gently pull the front panel away from the phone until it is fully removed from the device.

To reassemble your device, follow these instructions in reverse order.