



Coolpix S01 The power button won't turn on

Replacement

This guide will display steps of how to successfully replace the power button of this Nikon camera.

Written By: Rieana Hayes



INTRODUCTION

This guide will show you how to remove the power button in order to replace it.



TOOLS:

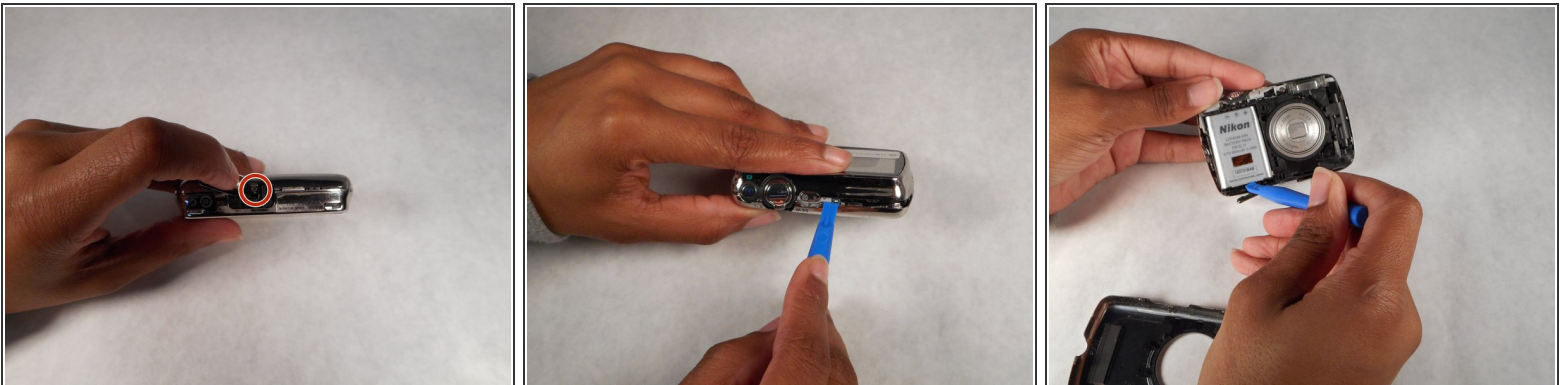
- [iFixit Opening Tools](#) (1)
 - [Phillips #000 Screwdriver](#) (1)
-

Step 1 — The power button won't turn on



- First make sure the camera is powered off.
- Then take the Hex and PH000 bit to remove a 2mm screw on the left side of the camera.
- Next, remove the 2mm screw on the right side of the camera.

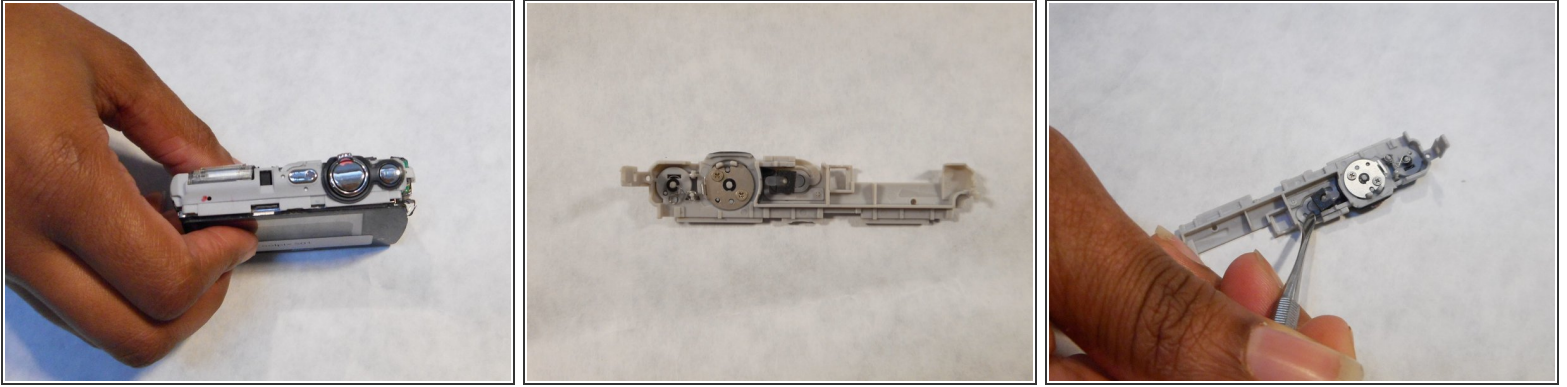
Step 2



- Remove the 3mm screw from the bottom of the camera.
- Once the 2mm and 3mm screws are removed, use the plastic opening tool to lift the sides of the camera and reveal the inside of the camera.

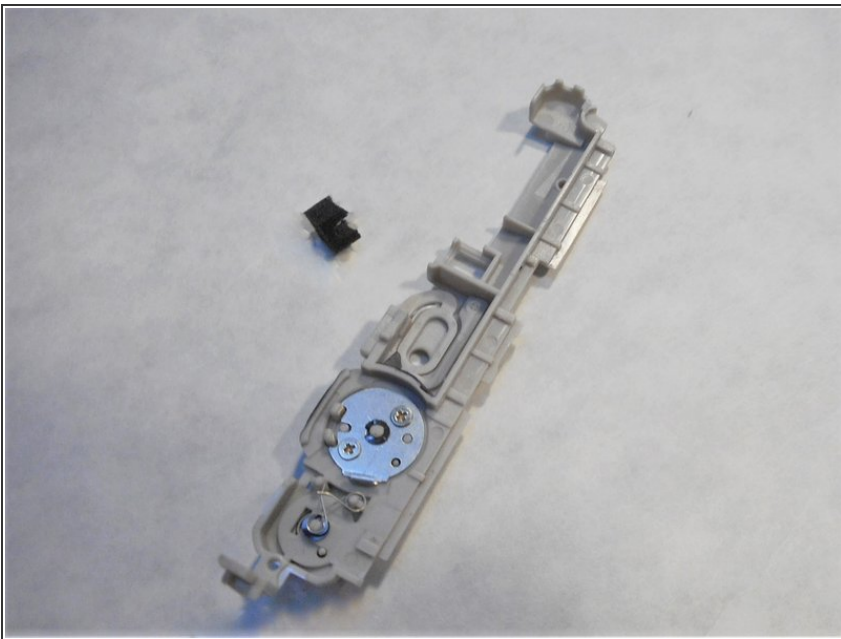
⚠ Be sure to remove the battery before continuing to repair.

Step 3



- After the battery is out, remove the gray button bar from the top of the camera with the smallest opening tool.
- With the gray bar detached from the camera, turn it upside down. Using the hex and the J000 bit remove the two 1mm screws.
- Take the needle nose tweezers to remove the power button.

Step 4



- You have successfully removed the power button and can replace it if needed.

To reassemble your device, follow these instructions in reverse order.

This document was generated on 2020-11-22 03:28:13 AM (MST).

