



# Canon PowerShot G3 Zoom Control Spring Replacement

This guide will illustrate how to replace a faulty spring in the zoom control on the camera.

Written By: Cory Jeanes



## INTRODUCTION

A faulty zoom control spring can be a failure mode for digital cameras. This can cause the camera to zoom erratically while in operation.

Note:

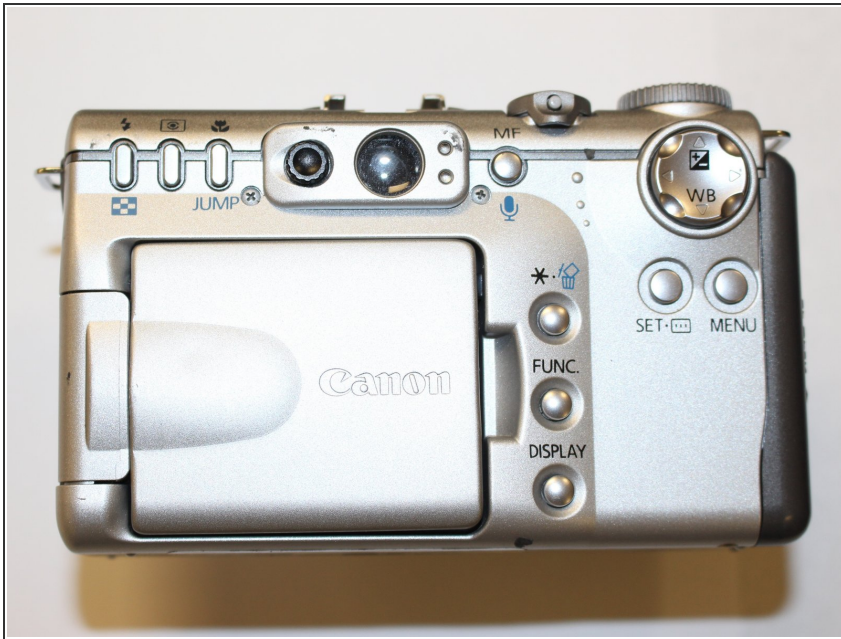
- 1.) There are many screws to be removed before you can reach the zoom control spring.
- 2.) To be able to replace the zoom control spring, you must have a comparable spring to the original.
- 3.) Do not continue unless you have a magnetic pad to place and keep track of the screws.



### TOOLS:

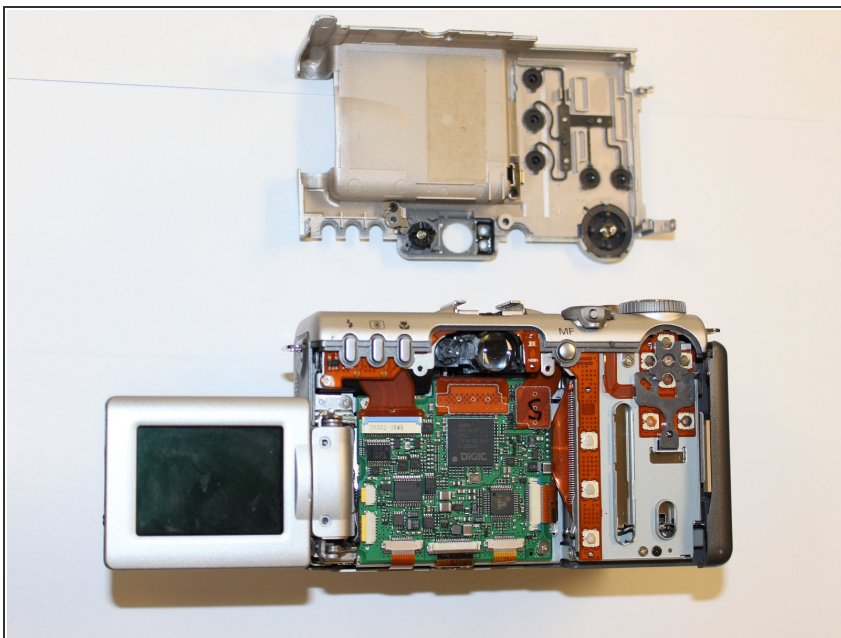
- [Essential Electronics Toolkit](#) (1)
-

## Step 1 — Zoom Control Spring



- Start by removing all of the screws around the camera: from the front, back, sides, and bottom.

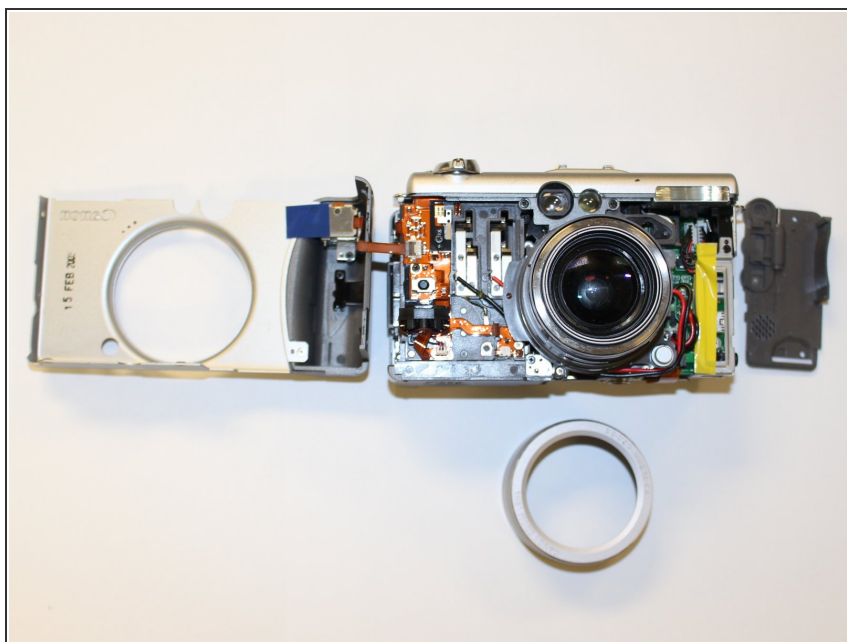
## Step 2



- Once the screws are removed, remove the back panel. The panel should be able to be removed by hand.

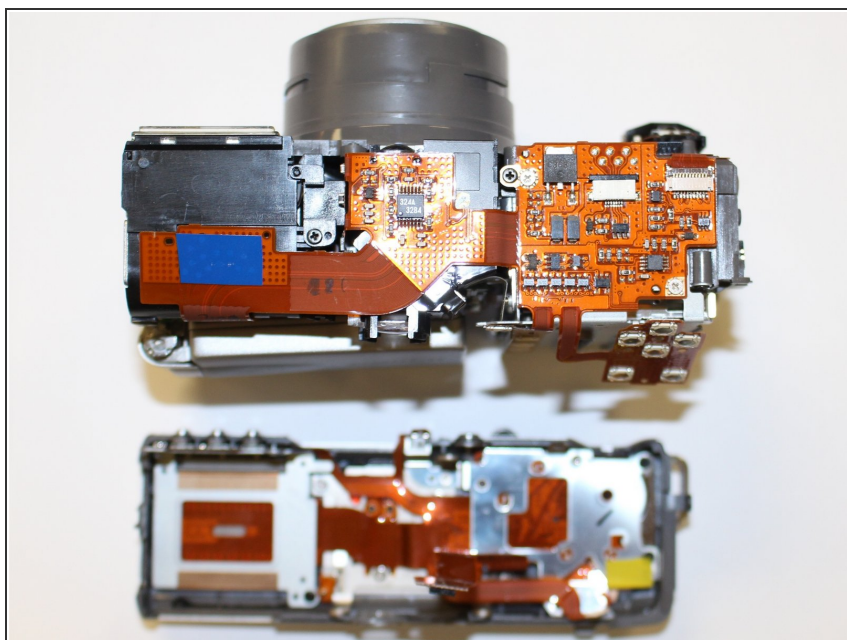


### Step 3



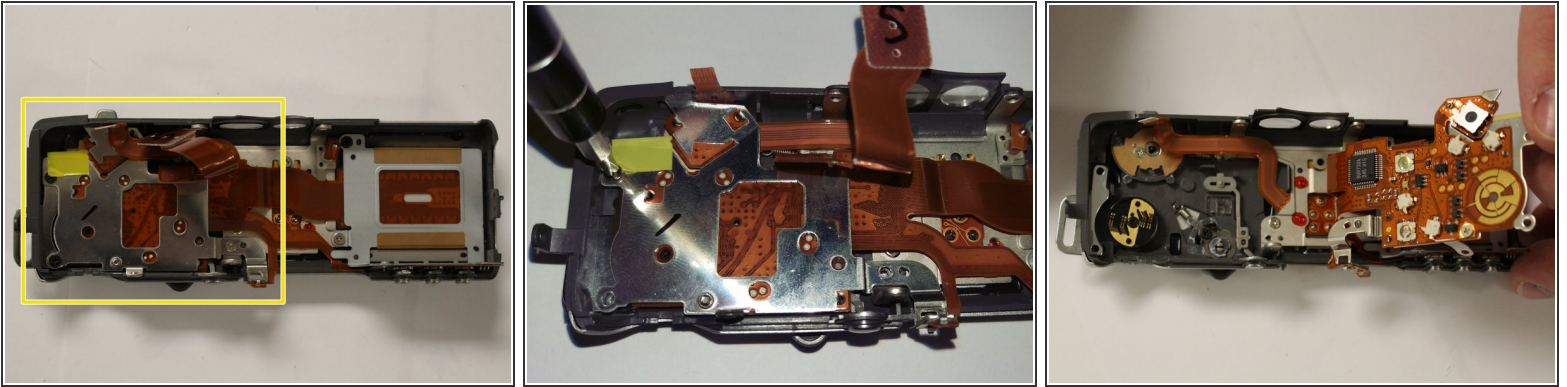
- Next remove the front and right side panels (the left side is attached to the front panel).

### Step 4



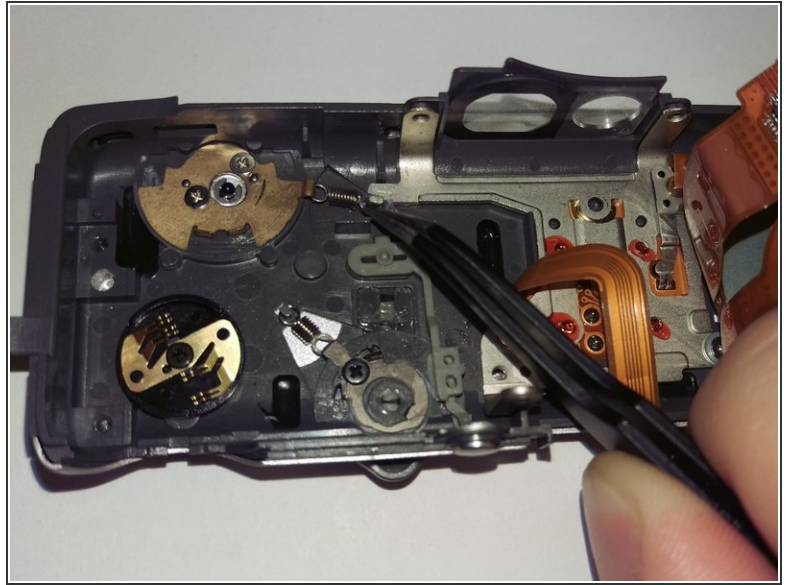
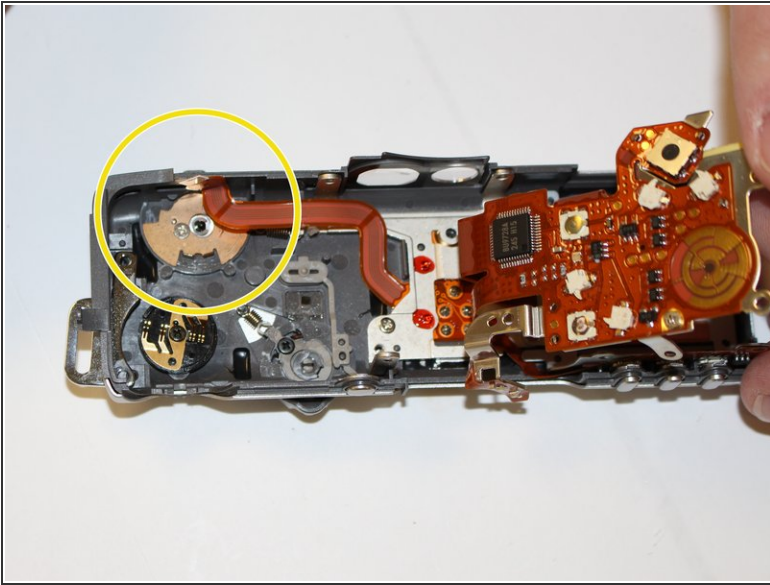
- Finally, remove the top panel as shown.

## Step 5



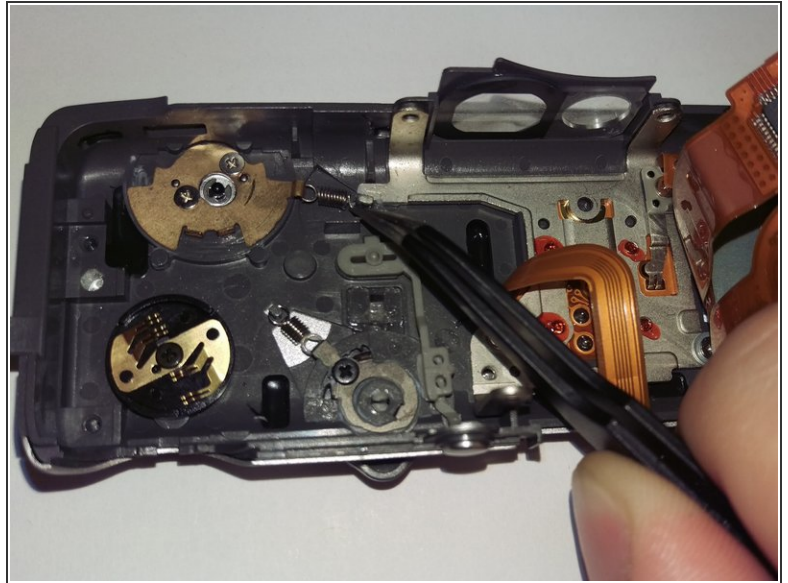
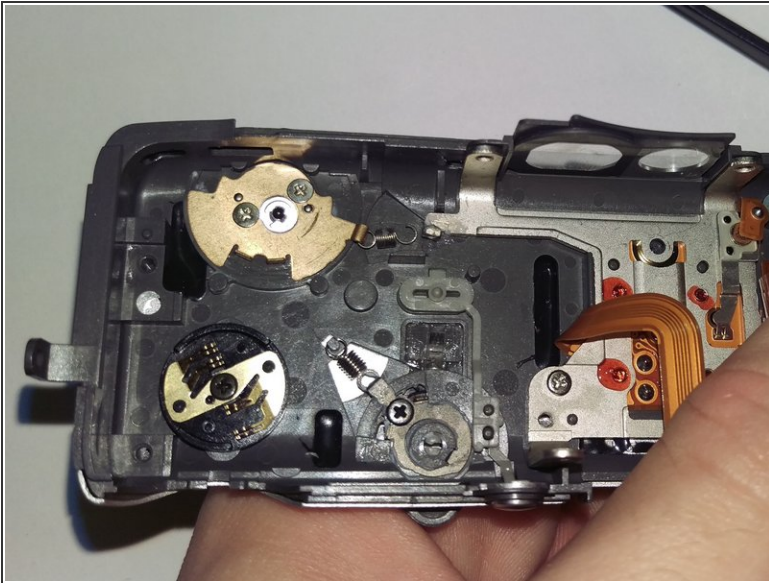
- With the top panel removed, locate the metal plate covering the zoom control on the underside of the panel (located on the forward left side, if the panel is oriented similarly to the first image.) This plate will also be connected to some circuit ribbon. Leave the ribbon attached to the plate.
- Remove the screws from the plate, and lift and fold the plate along the attached circuit ribbon to the right (as shown in third image.)

## Step 6



- With the top panel and metal plate removed, locate the zoom control on the underside of the panel (located on the forward left side if the panel is oriented similarly to the first image.) It will be located directly under the metal plate and circuit ribbon that was removed in the previous step.
- Once the zoom control is located, remove the faulty zoom control spring from the metal pegs on the panel and zoom control.

## Step 7



- Replace the zoom control spring with a comparable spring, attaching the loop ends to the same metal pegs to which the previous spring was attached (on the panel and zoom control.)

To reassemble your device, follow these instructions in reverse order.