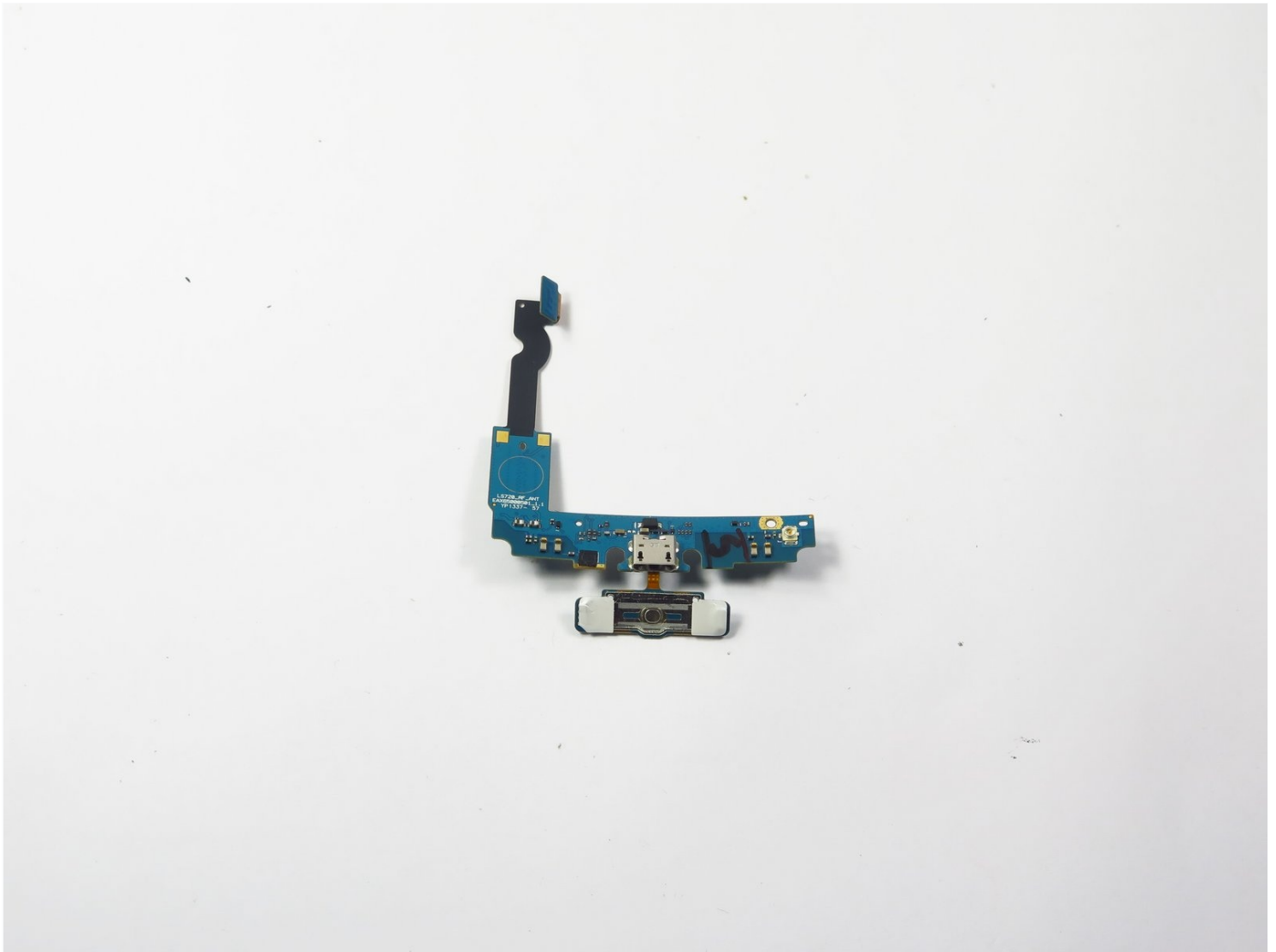




# LG Optimus F3 Charging port unit Replacement

Written By: Jonathan Fang



---

## TOOLS:

[64 Bit Driver Kit](#) (1)

[iFixit Opening Tool](#) (1)

[Tweezers](#) (1)

---

### Step 1 — Motherboard



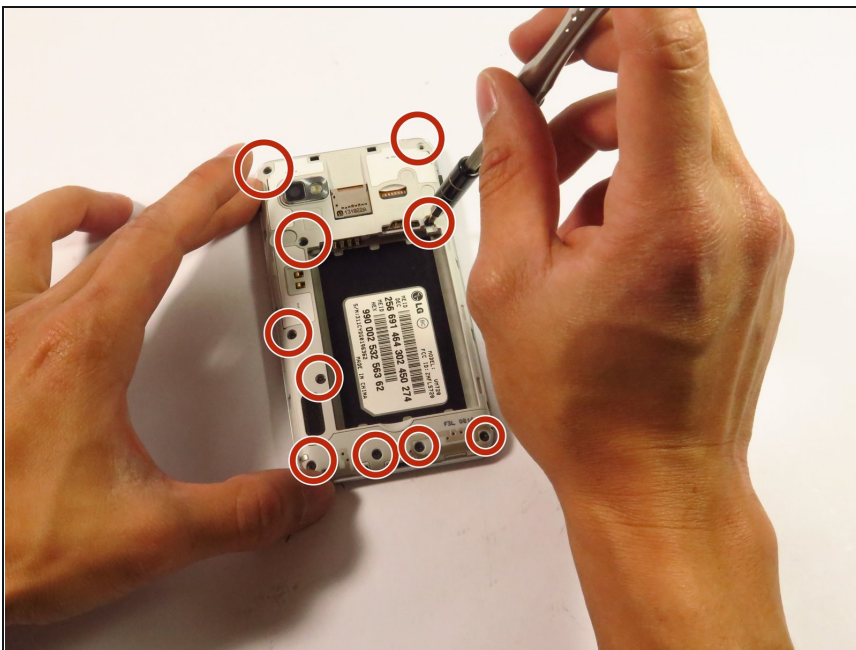
- Turn the device so that the back faces up.
- ① It is easiest to open the case near the charging port located at the bottom of the phone.
- Remove the back case by pushing up on the back and pulling down on the face as illustrated in the image.

## Step 2



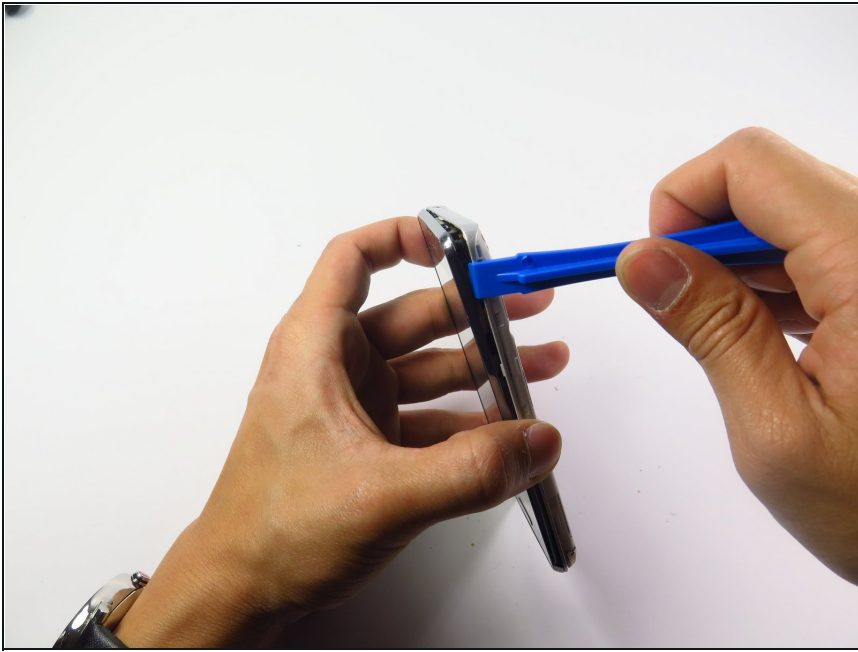
- ① With back case removed, the battery is visible. The battery is the large square object.
- Remove the battery by flipping the bottom edge upward to separate the battery from the case.

## Step 3



- Remove 10 1.0 mm screws located on the back of the device.
- ① Refer to the outlined locations in the image for the screws.

## Step 4



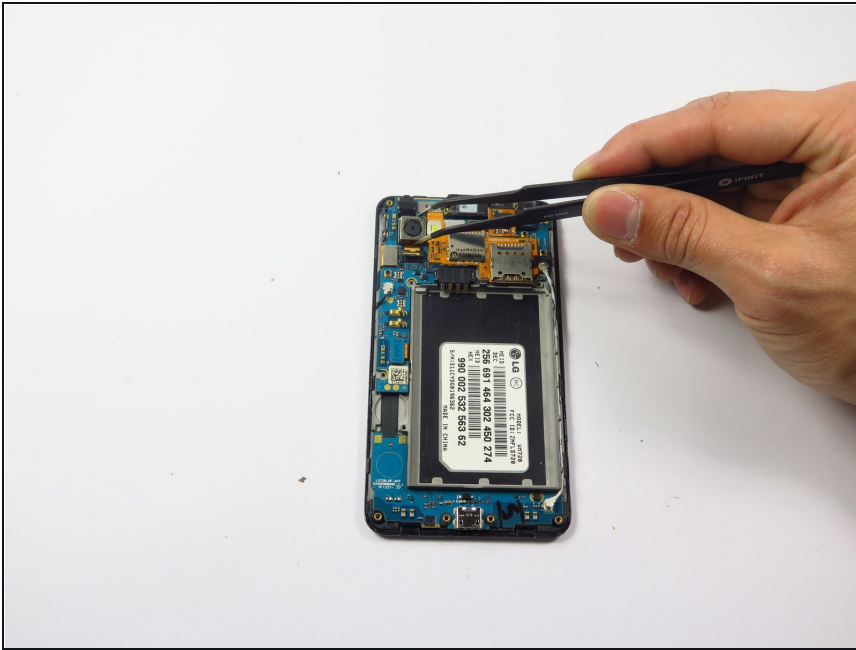
- Use the plastic opening tool to separate the inner case from the device.
- Wedge the plastic opening tool between the case.
- Wiggle the tool and use leverage to pry the case apart.

## Step 5



- ① The camera unit is located at the top left of the phone. The camera is a silver box with a black lens. The image pin points where the camera is on the motherboard.
- Use the plastic opening tool to separate the camera from the motherboard.
- Wedge the plastic tool between the camera and the motherboard to loosen the camera unit.

## Step 6



- Use a pair of [tweezers](#) to disconnect and remove the rear facing camera.

## Step 7



- Use the plastic opening tool to separate the sim card and the memory card connector from the motherboard.
- ⚠ Note that the sim card and the memory card connector are one unit.
- Wedge the plastic tool to lift up the sim-memory unit from the motherboard.



## Step 8



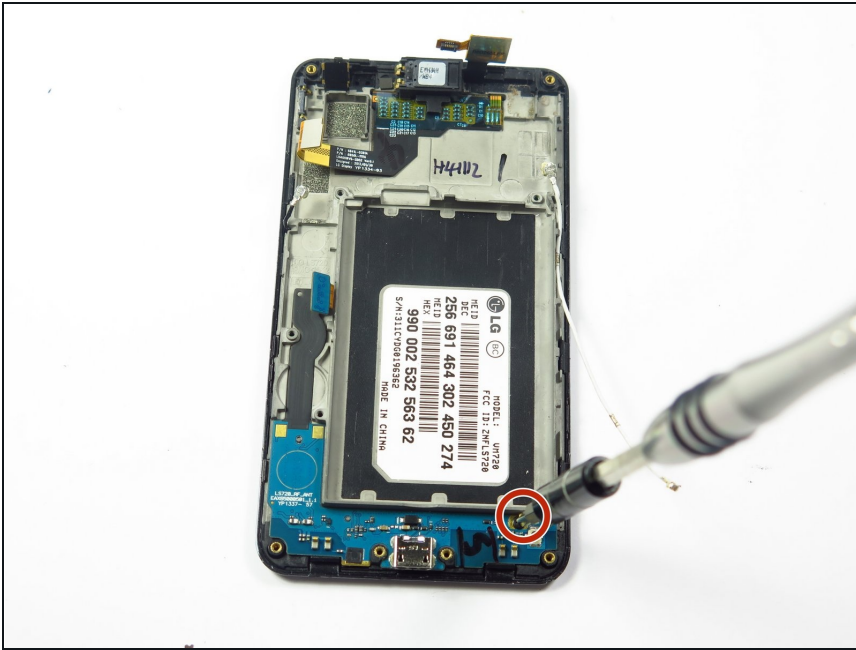
- Use the plastic opening tool to remove the charging port unit.
- Wedge the plastic opening tool between the charging port unit and the motherboard to separate the port.

## Step 9



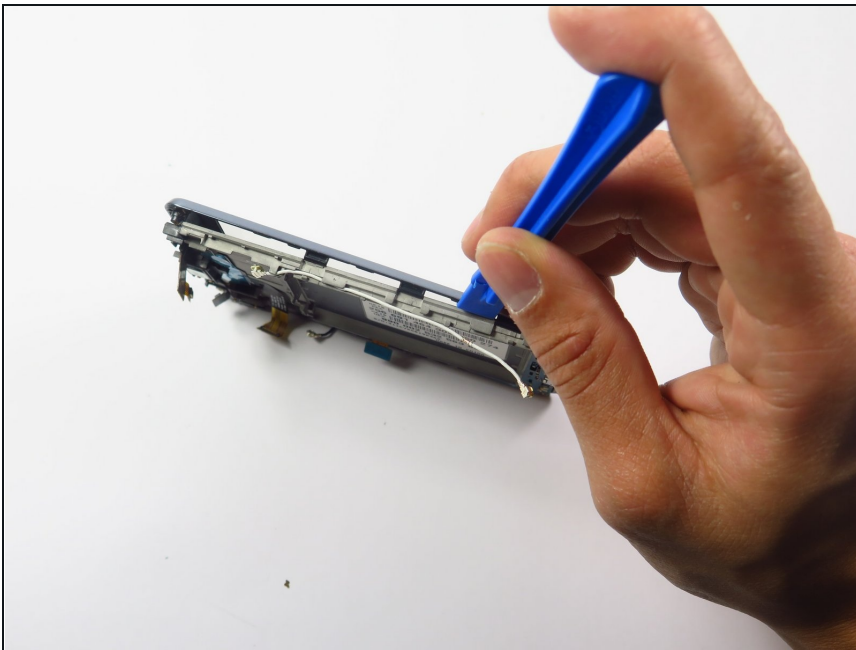
- Use the plastic opening tool to remove the motherboard located directly above the battery encasement.
- ① The motherboard is an L-shaped unit above and to the left of the battery encasement.
- Wedge the plastic opening tool between the circuit board and the motherboard to separate the unit.

## Step 10 — Charging port unit



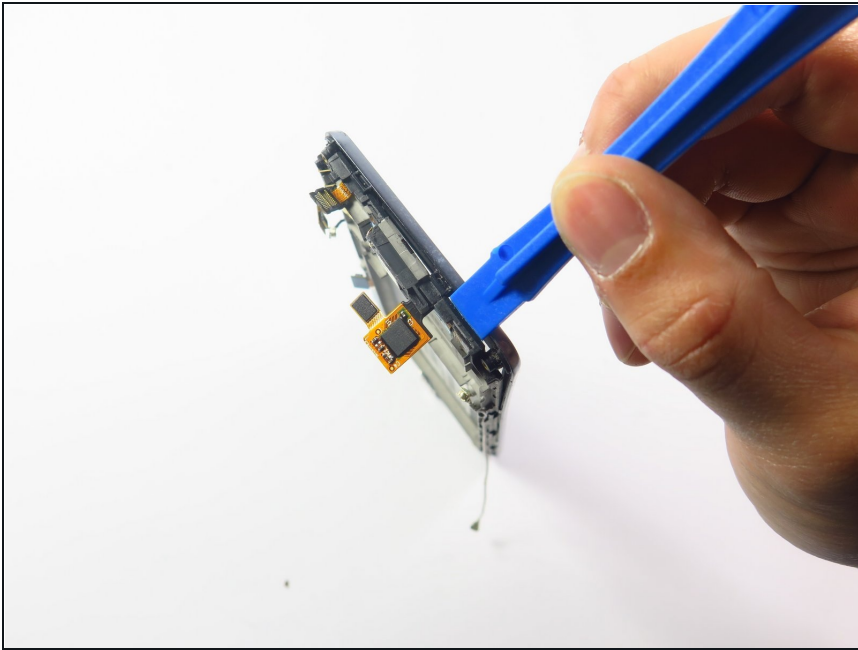
- Remove one 1.0 mm screw.

## Step 11



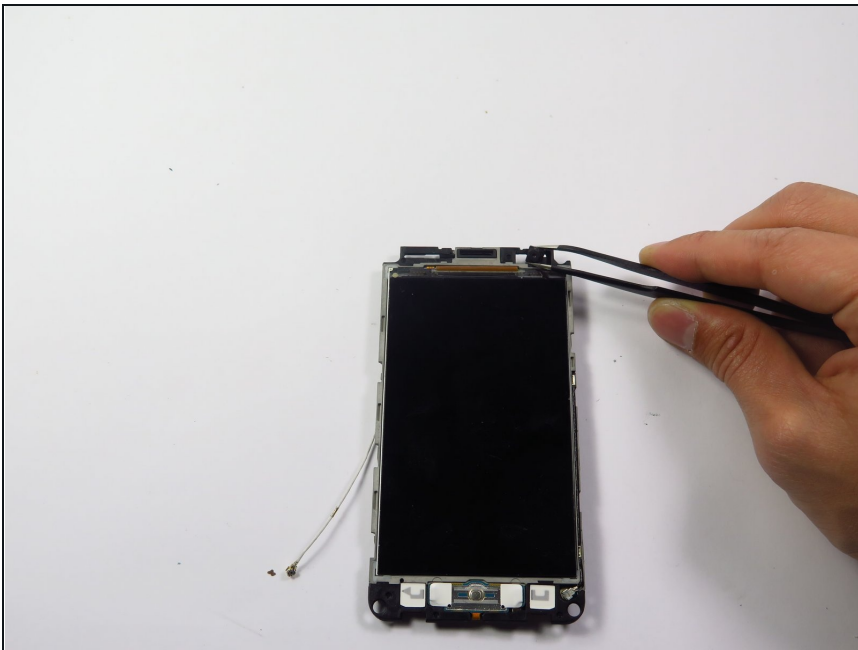
- Use a plastic opening tool to remove front glass protector.

## Step 12



- Use the plastic opening tool to remove front glass cover carefully. Try not to break the connector.

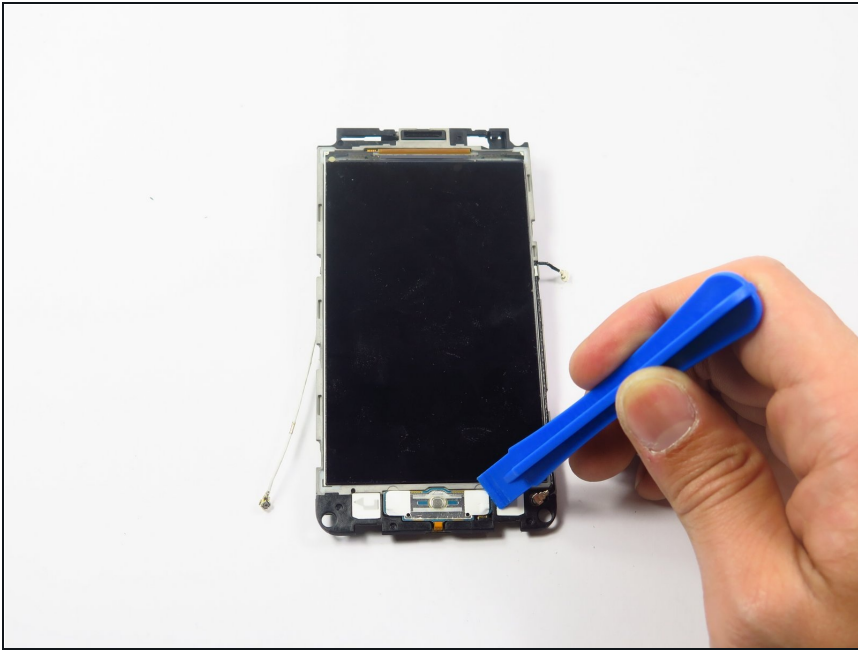
## Step 13



- Remove the front facing camera.



## Step 14



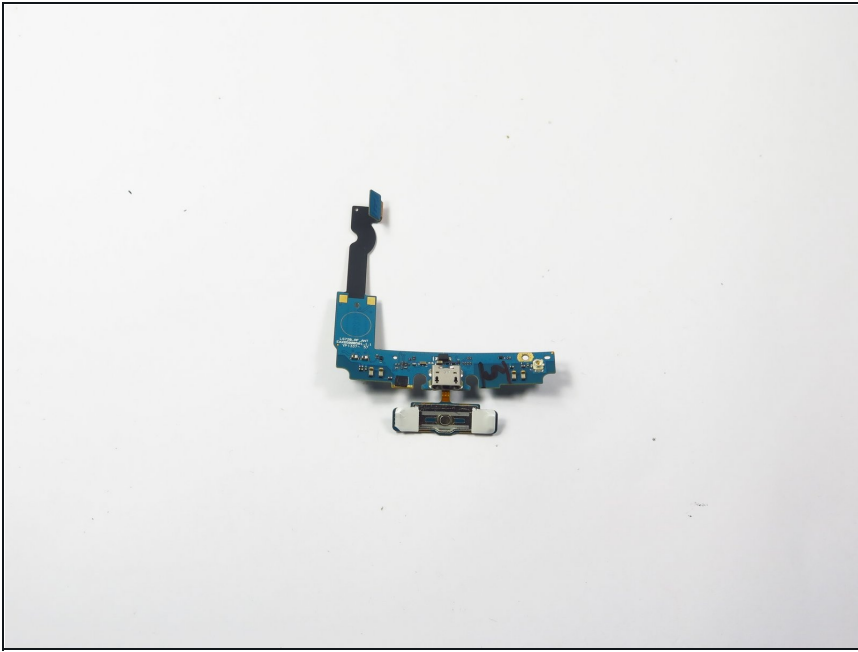
- Use the plastic opening tool to carefully remove the home button board. It is attached with double-sided tape.

## Step 15



- Use the plastic opening tool to remove the charging port unit.

## Step 16



- You are all set.

---

To reassemble your device, follow these instructions in reverse order.