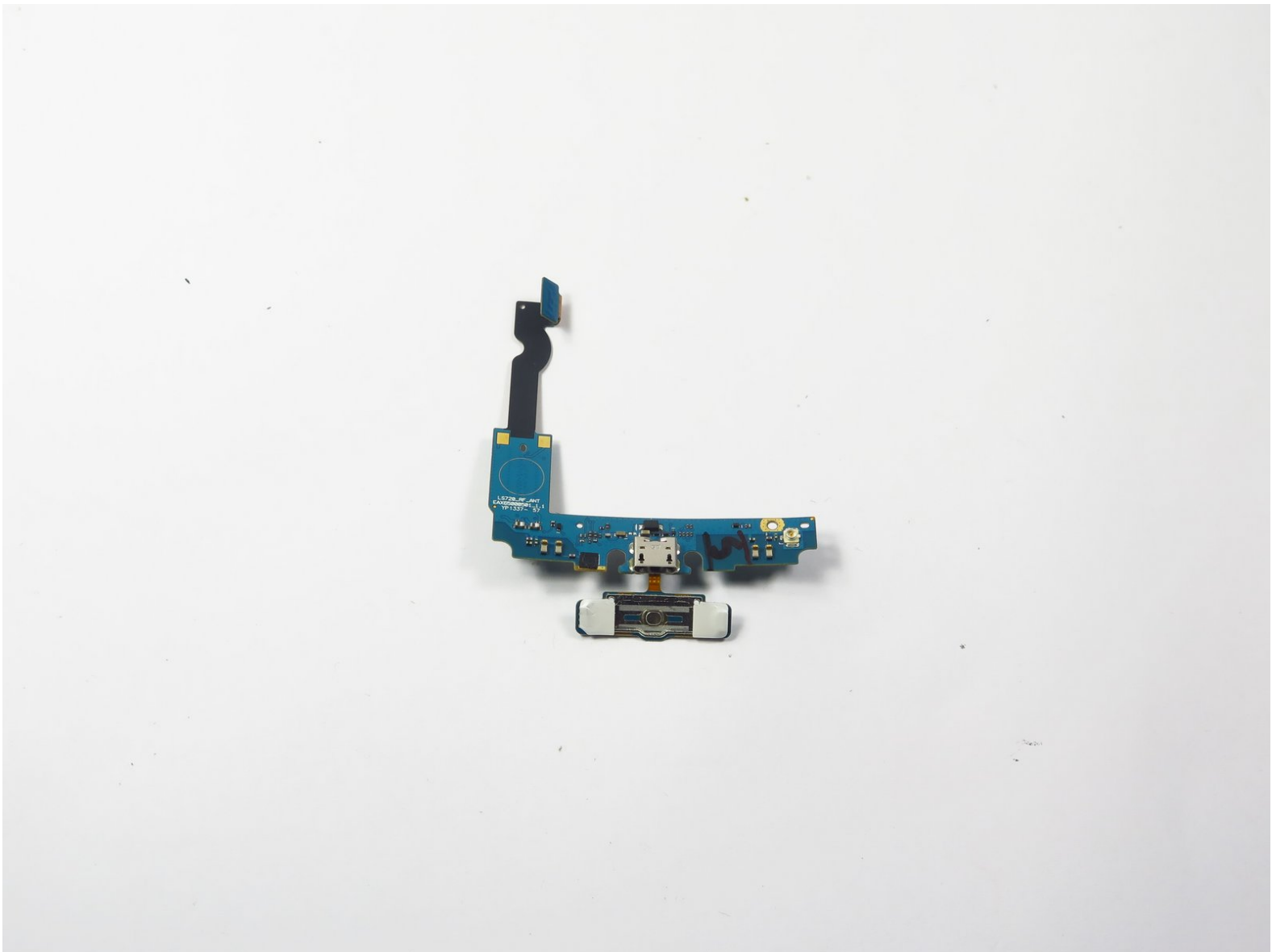




LG Optimus F3 Charging port unit Replacement

This is a replacement guide about how to remove the charging unit and the home button if either one is not function correctly.

Written By: Jonathan Fang





TOOLS:

- [64 Bit Driver Kit](#) (1)
 - [iFixit Opening Tools](#) (1)
 - [Tweezers](#) (1)
-

Step 1 — Motherboard



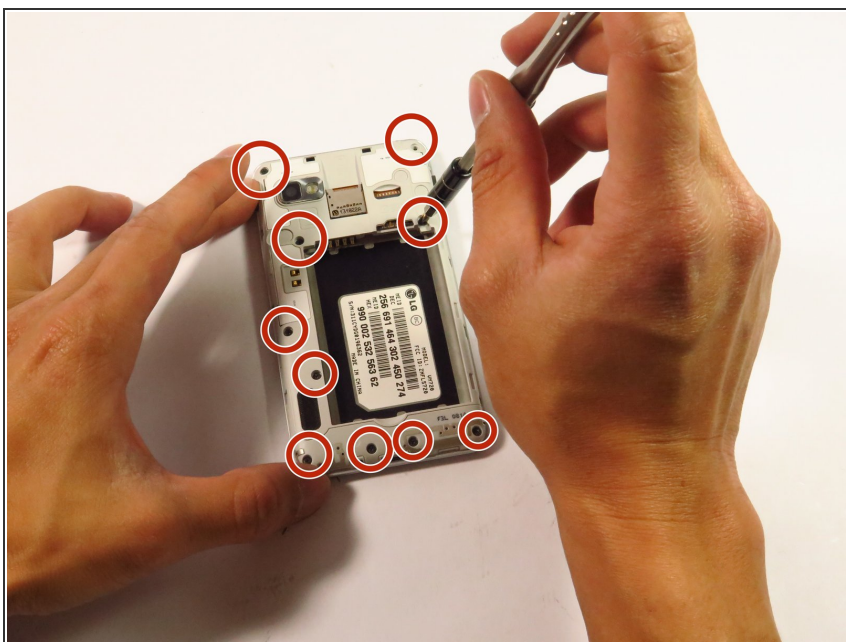
- Turn the device so that the back faces up.
- ❗ It is easiest to open the case near the charging port located at the bottom of the phone.
- Remove the back case by pushing up on the back and pulling down on the face as illustrated in the image.

Step 2




- ❗ With back case removed, the battery is visible. The battery is the large square object.
- Remove the battery by flipping the bottom edge upward to separate the battery from the case.

Step 3



- Remove 10 1.0 mm screws located on the back of the device.

 Refer to the outlined locations in the image for the screws.

Step 4



- Use the plastic opening tool to separate the inner case from the device.
- Wedge the plastic opening tool between the case.
- Wiggle the tool and use leverage to pry the case apart.

Step 5



- ❗ The camera unit is located at the top left of the phone. The camera is a silver box with a black lens. The image pin points where the camera is on the motherboard.
- Use the plastic opening tool to separate the camera from the motherboard.
- Wedge the plastic tool between the camera and the motherboard to loosen the camera unit.

Step 6




- Use a pair of tweezers to disconnect and remove the rear facing camera.

Step 7



- Use the plastic opening tool to separate the sim card and the memory card connector from the motherboard.

 Note that the sim card and the memory card connector are one unit.

- Wedge the plastic tool to lift up the sim-memory unit from the motherboard.

Step 8



- Use the plastic opening tool to remove the charging port unit.
- Wedge the plastic opening tool between the charging port unit and the motherboard to separate the port.

Step 9



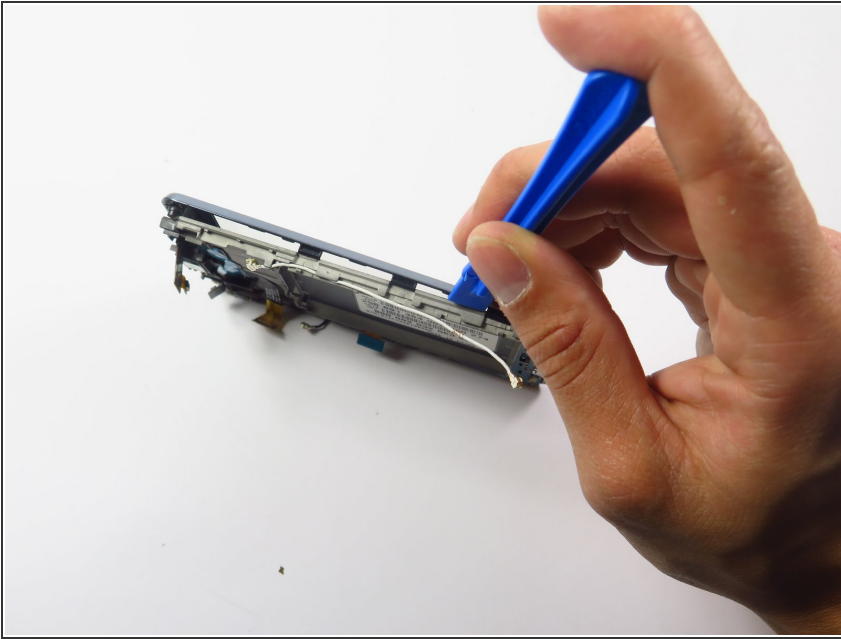
- Use the plastic opening tool to remove the motherboard located directly above the battery encasement.
- ⓘ The motherboard is an L-shaped unit above and to the left of the battery encasement.
- Wedge the plastic opening tool between the circuit board and the motherboard to separate the unit.

Step 10 — Charging port unit



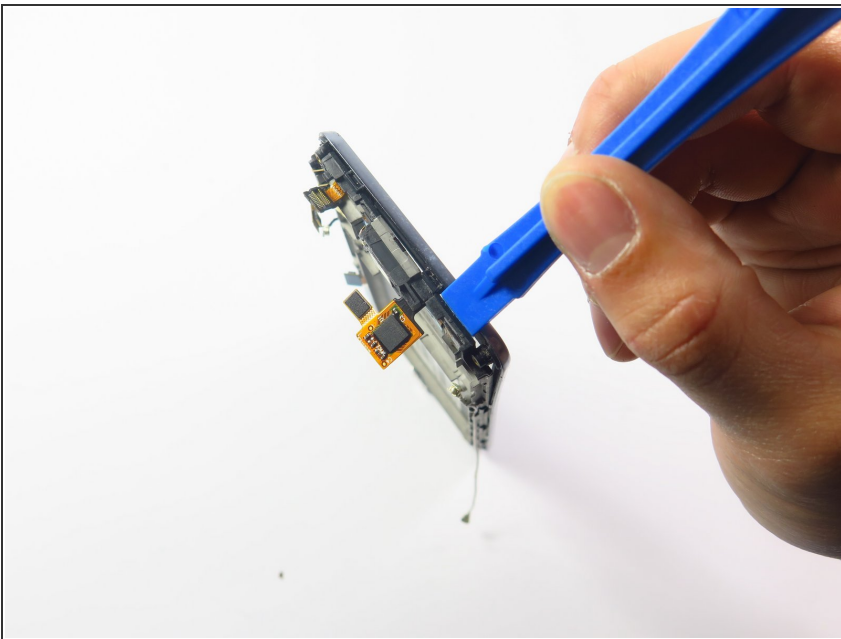
- Remove one 1.0 mm screw.

Step 11



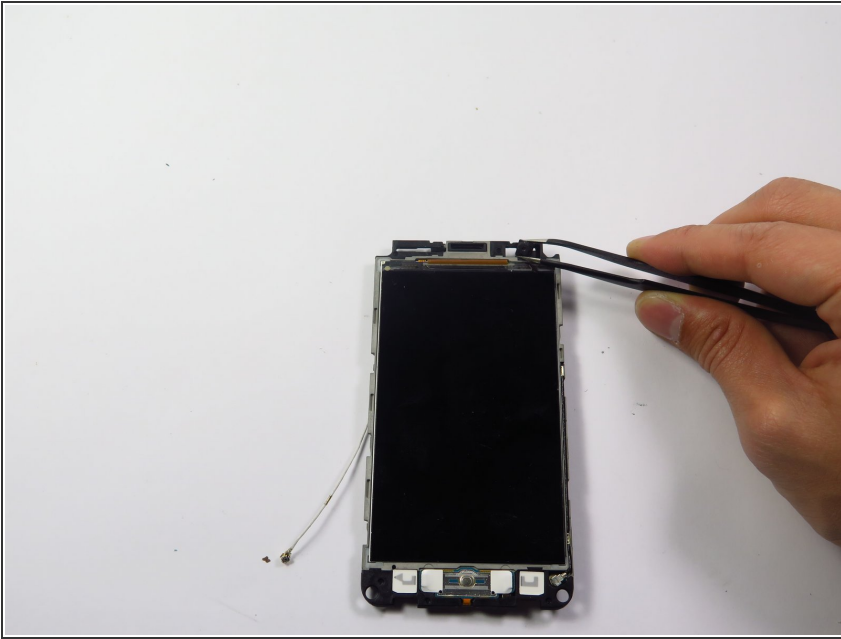
- Use a plastic opening tool to remove front glass protector.

Step 12



- Use the plastic opening tool to remove front glass cover carefully. Try not to break the connector.

Step 13



- Remove the front facing camera.

Step 14



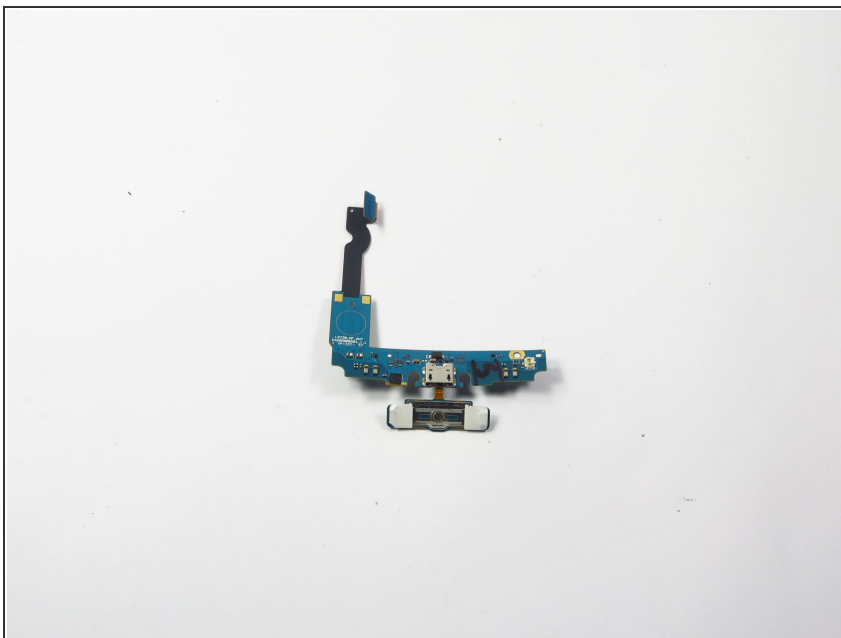
- Use the plastic opening tool to carefully remove the home button board. It is attached with double-sided tape.

Step 15



- Use the plastic opening tool to remove the charging port unit.

Step 16



- You are all set.

To reassemble your device, follow these instructions in reverse order.