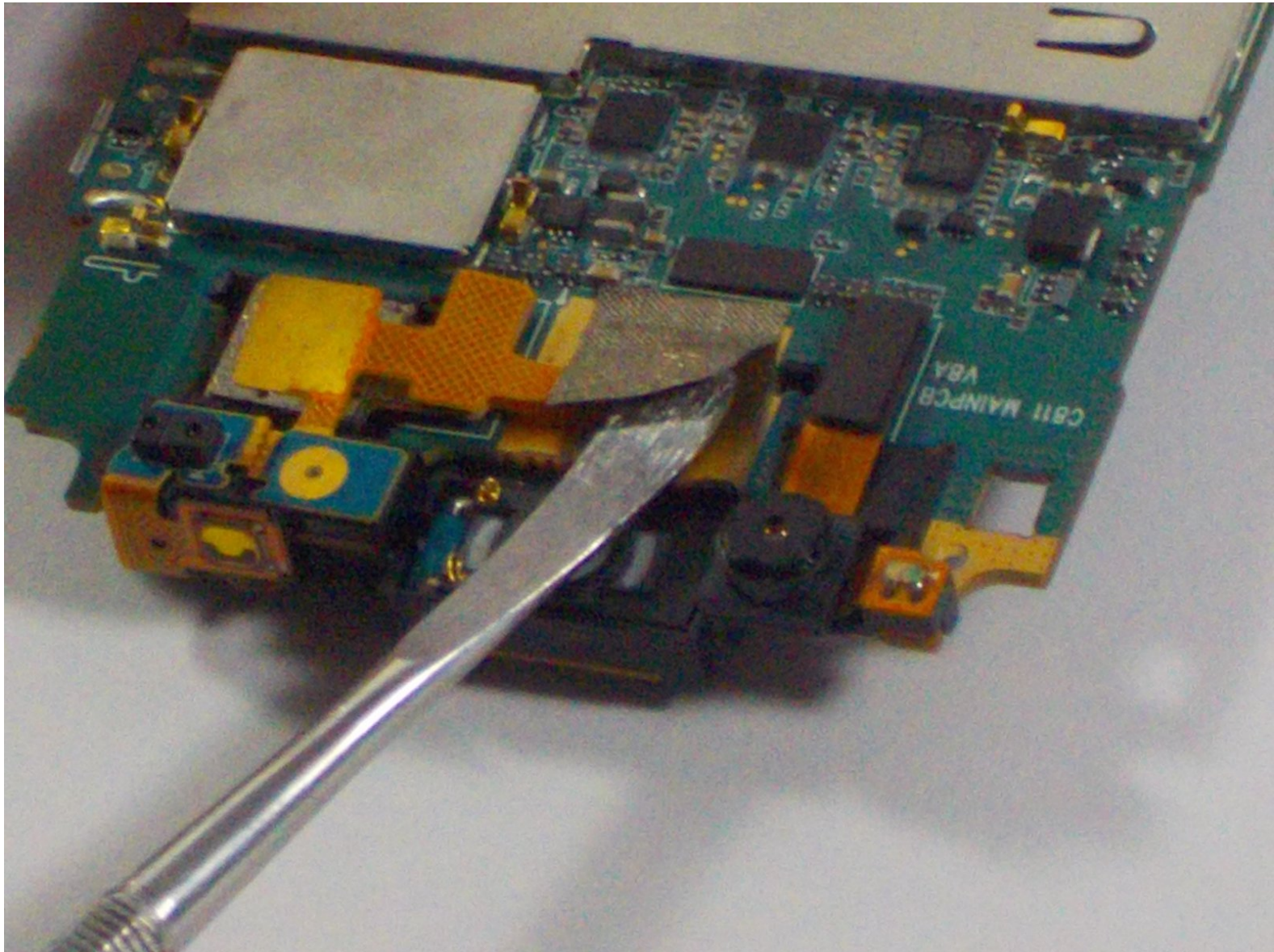




# Casio G'zOne Commando 4G LTE Camera Replacement

This guide will show you how simply replace the camera of the Casio G'zOne Commando 4G LTE.

Written By: Keith Hickey



---

## INTRODUCTION

After removing the battery and motherboard from your device you will be able to simply remove the camera from the mother board after following the steps provided.



### TOOLS:

- [Spudger](#) (1)
  - [Phillips #000 Screwdriver](#) (1)
  - [Tri-point Y0 Screwdriver](#) (1)
  - [Phillips #00 Screwdriver](#) (1)
-

## Step 1 — Motherboard



- First, you are going to want to take out the two front screws from the device.
- The screws are 4mm in length and require a Y0 bit to remove

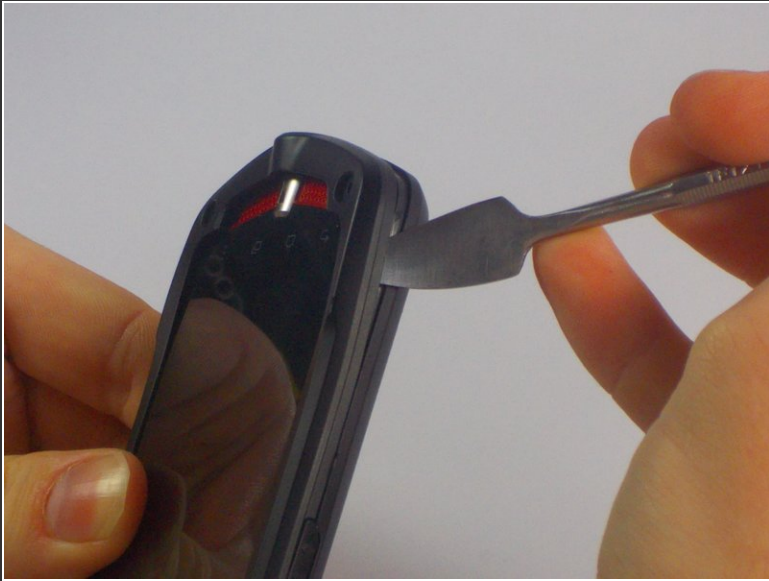
## Step 2



- Using the same screw head, remove the back four screws from the device.



### Step 3



- You should have taken out six screws (two from the front, four from the back). Once you do this, you will have to separate the front and back casing of the phone using a spudger or pry tool.

### Step 4



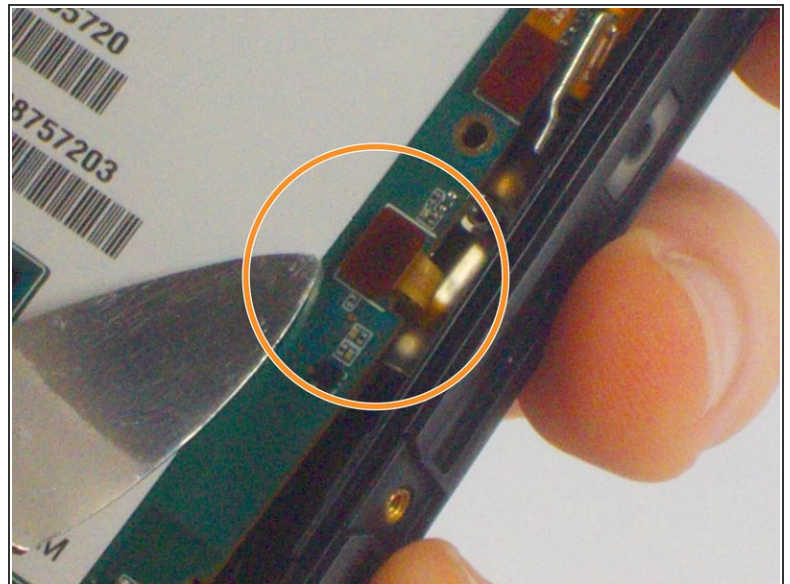
- Now, you have six more screws to unscrew (three on each side). They are all the same size but smaller than the first six we took off.
- These screws are 4mm in length and require a PH00 tip to remove.

## Step 5



- Once you unscrew all six screws, you can easily separate the plastic shell with your hands.

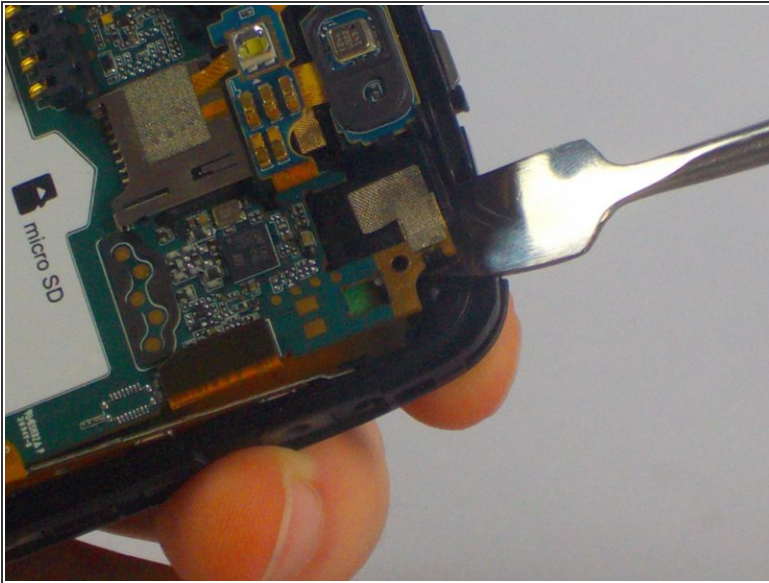
## Step 6



- Again, there are six more (and even smaller) screws to take out. Additionally, you have to disconnect a small wire plugged into the motherboard.
- These screws are 2mm in length and require a PH000 tip to remove.

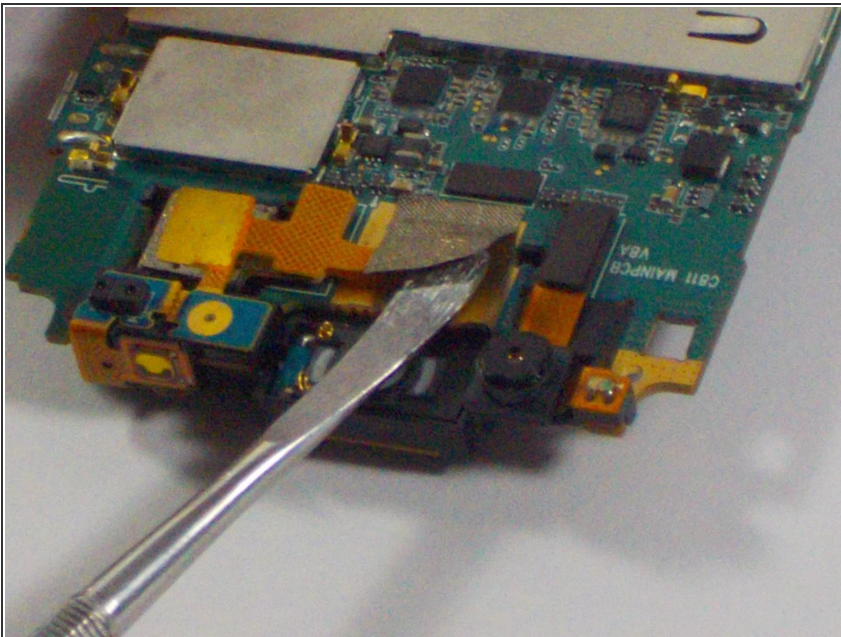


## Step 7



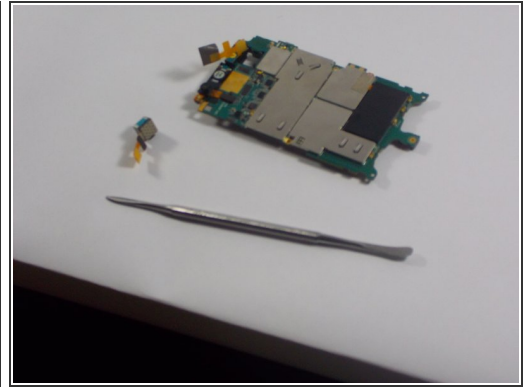
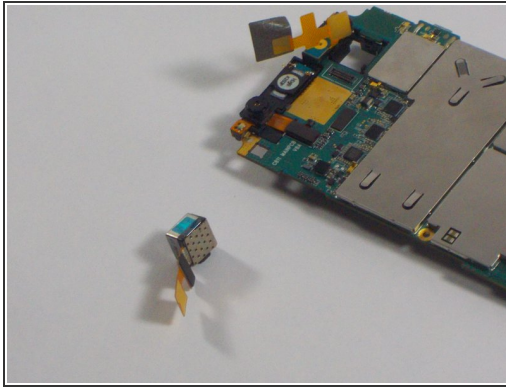
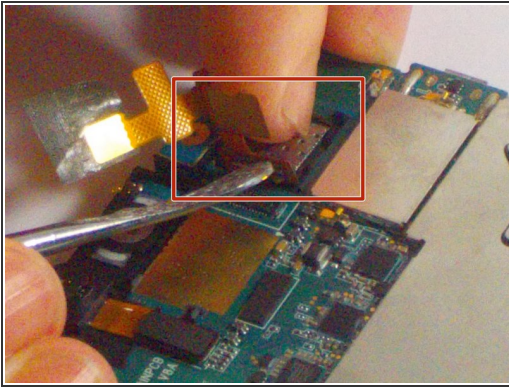
- After removing the screws carefully separate the motherboard from the shell with the spudger.

## Step 8 — Camera



- In order to remove the camera, carefully disconnect the wires with the metal spudger.

## Step 9



- After disconnecting the wires, remove the camera by putting slight pressure of the optical camera lens. The camera the will pop out of the motherboard.

To reassemble your device, follow these instructions in reverse order.