



# Sanyo VPC-T850 Outer Casing Replacement

Written By: James Robinson

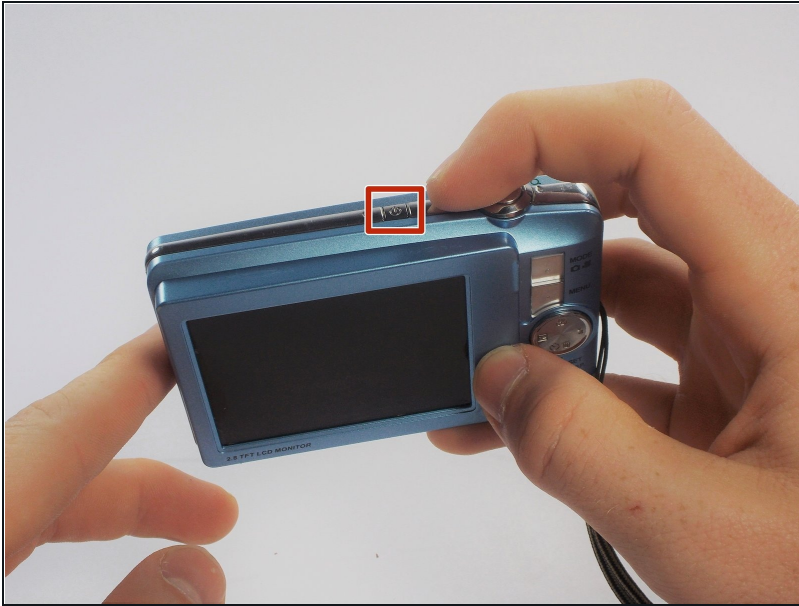


## TOOLS:

Phillips #000 Screwdriver (1)

iFixit Opening Tool (1)

### Step 1 — Battery



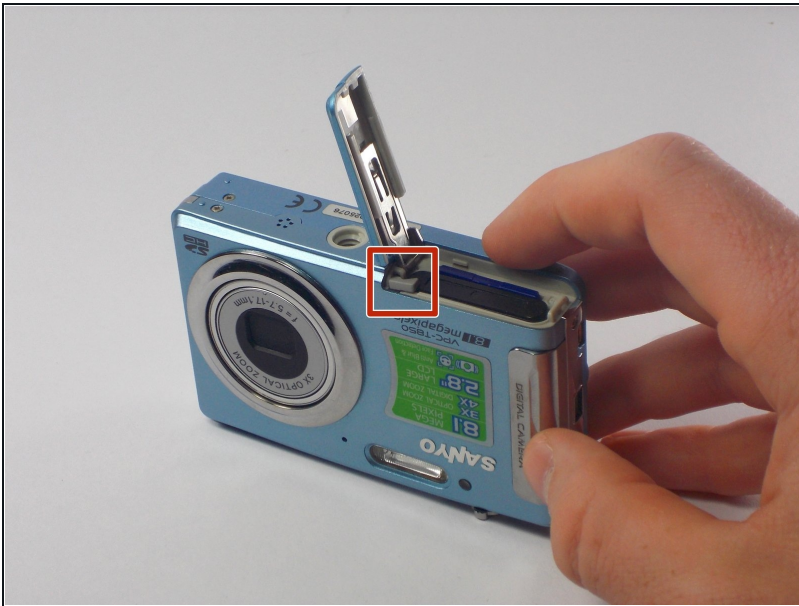
- Make sure the camera is powered off by pressing and holding the small, square button embedded in the top rim of the camera.

### Step 2



- Locate the hatch found on the bottom of the camera.
- Open the hatch by gripping the small notch and sliding it outwards.

### Step 3



- Push the small, plastic arm out of the way to free the battery.
- ⓘ The battery is spring loaded and will pop out slightly when the arm is moved.

### Step 4



- Pull the battery out of the camera and close the hatch.
- ★ To reinsert, there is a triangle on the battery indicating which direction to slide it in.

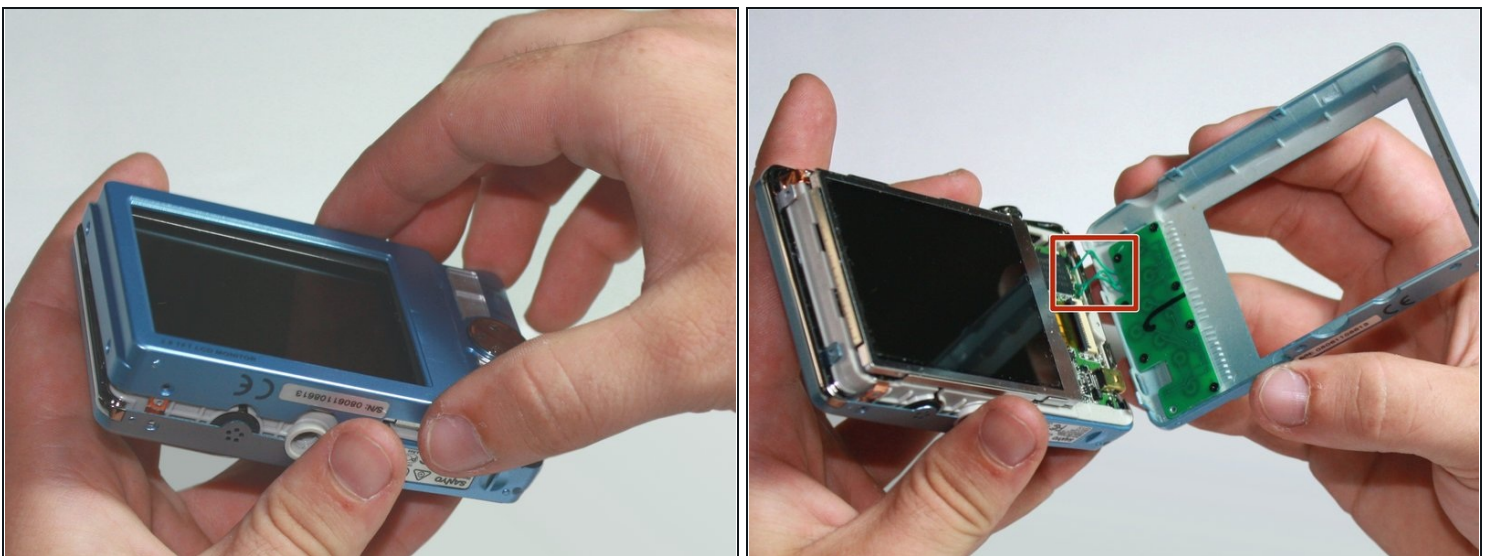


## Step 5 — Outer Casing



- Using your Phillips #000 Screwdriver, remove the eight screws located around the sides and bottom of the camera.
  - ❗ Be sure to keep track of the side each screw comes from, as they come in different lengths.

## Step 6

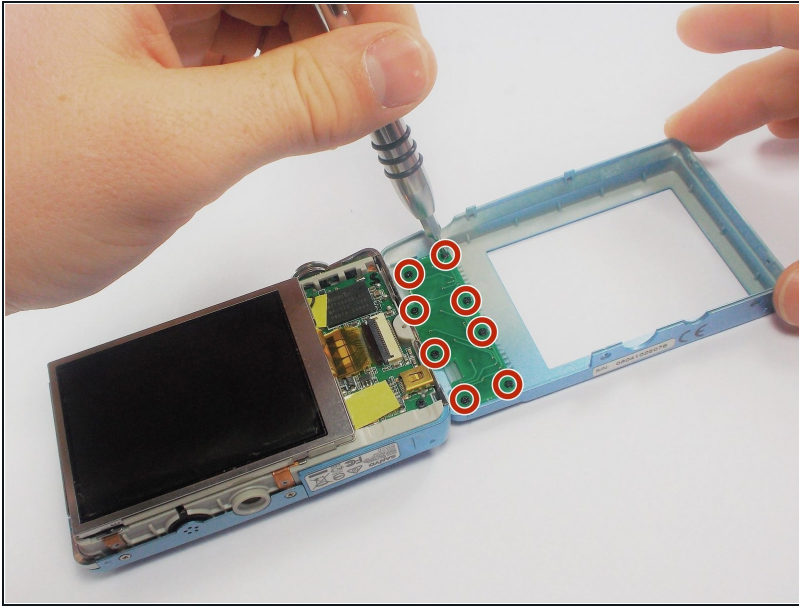


- Orient the camera so the display is facing up.
- Gently pull off the rear panel surrounding the display.

⚠ There are still three green wires connecting the panel to the rest of the camera.

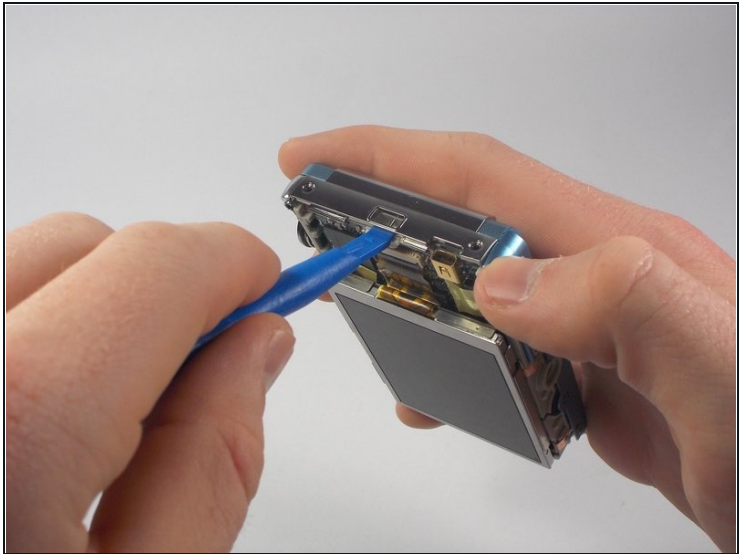
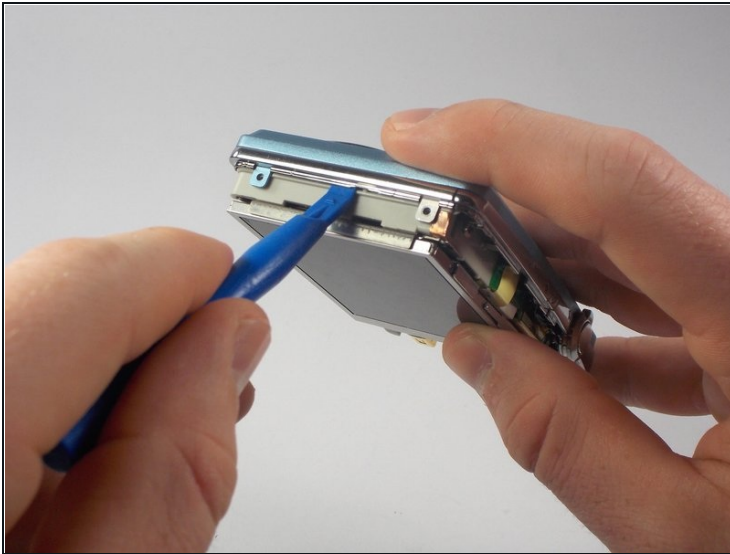
- ❗ Use your prying tool if you have difficulties removing the panel by hand.

## Step 7



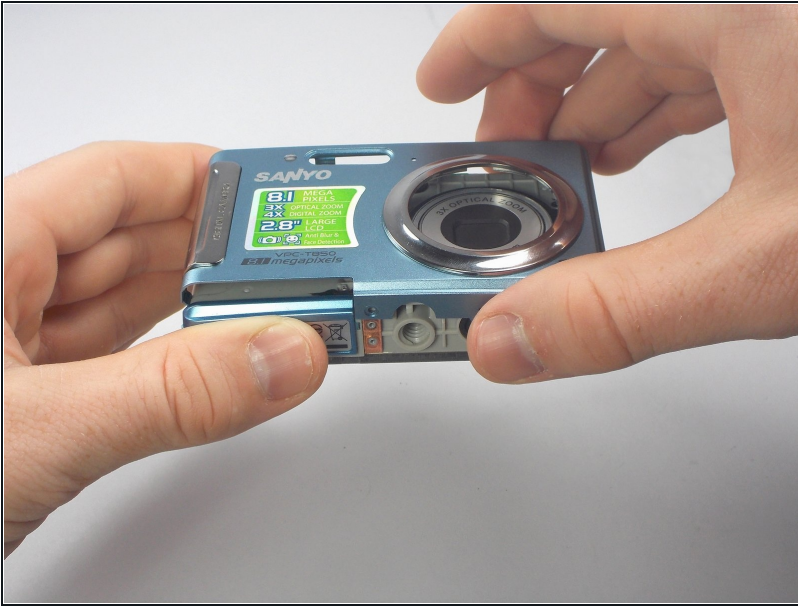
- Remove the eight black screws connecting the keypad circuit board to the rear panel.

## Step 8



- With a plastic opening tool, gently remove the chrome framing on the left and right sides of the camera.

## Step 9



- Flip the camera over so the lens is facing up.
- Gently lift up the front panel to remove it from the rest of the camera.
- ① Use your plastic opening tool if you have difficulties removing the panel by hand.

---

To reassemble your device, follow these instructions in reverse order.