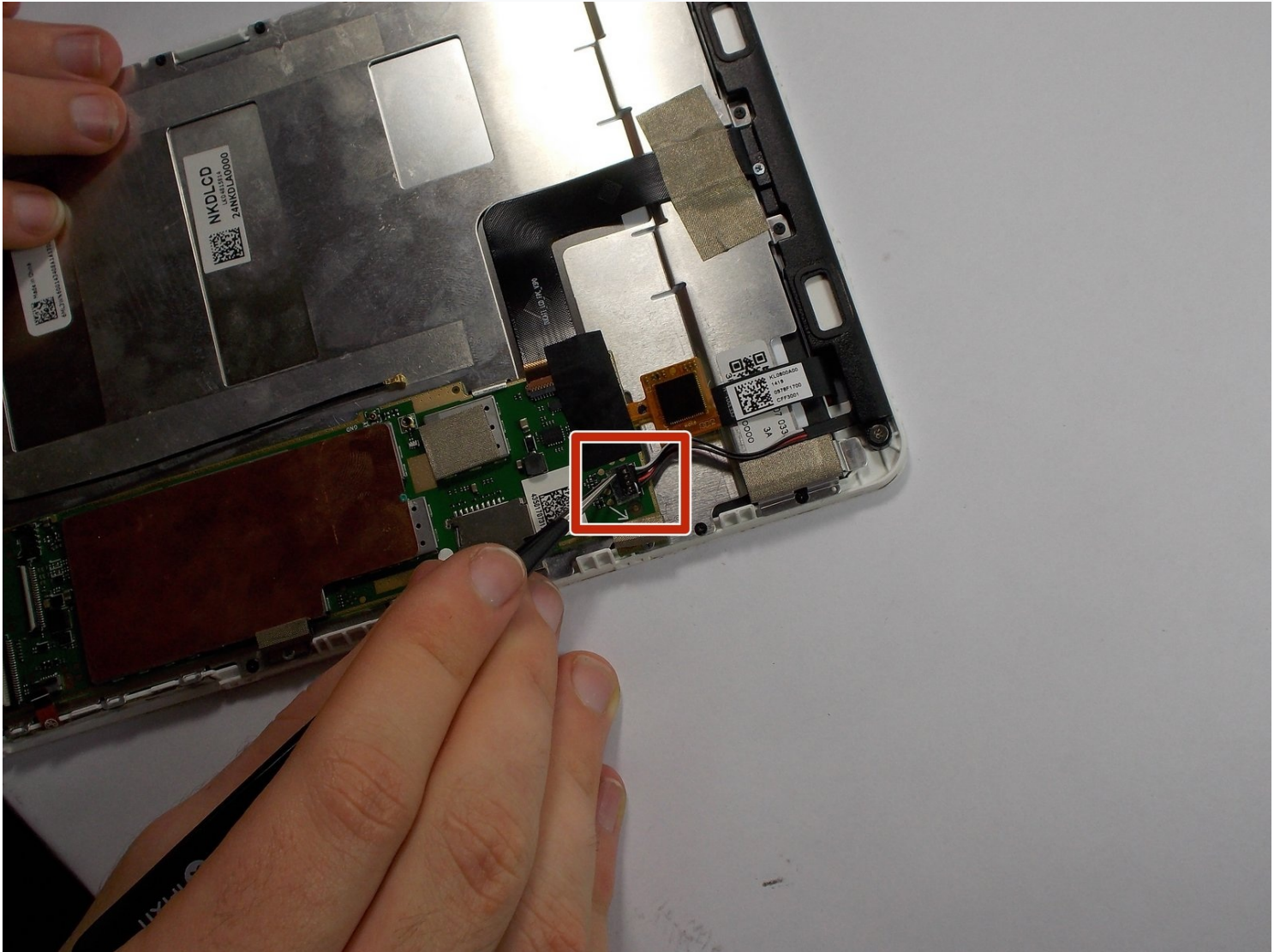




# Acer Iconia A1-830 Speaker Assembly Replacement

Replacing the internal speakers in your tablet...

Written By: Brendan Coveney



# INTRODUCTION

Replacing the internal speakers in your tablet is fairly easy to do. Make sure you keep the screws you remove, you will need them to install the replacement speaker assembly.

---

## TOOLS:

[iFixit Opening Tool](#) (1)

[Spudger](#) (1)

[Phillips #000 Screwdriver](#) (1)

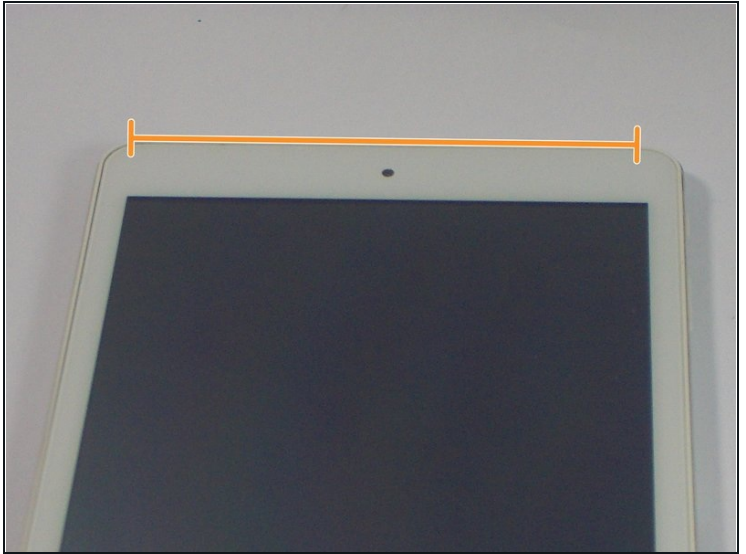
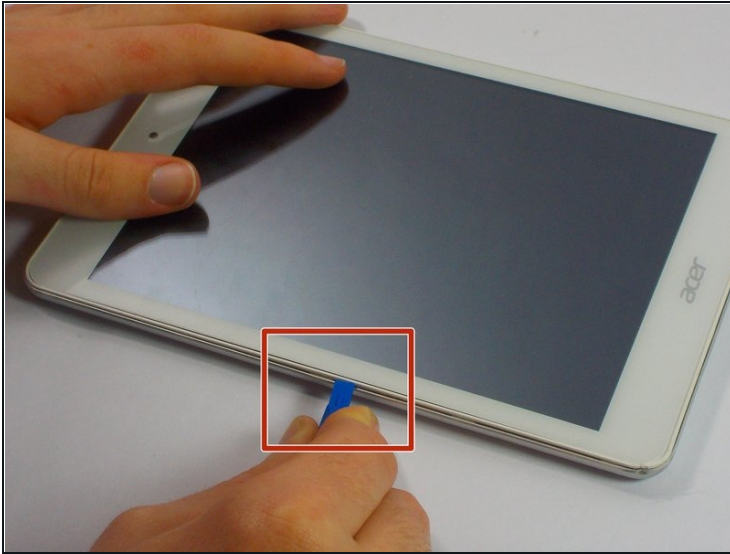
---

## Step 1 — Disassembling Acer Iconia A1-830 Back Panel



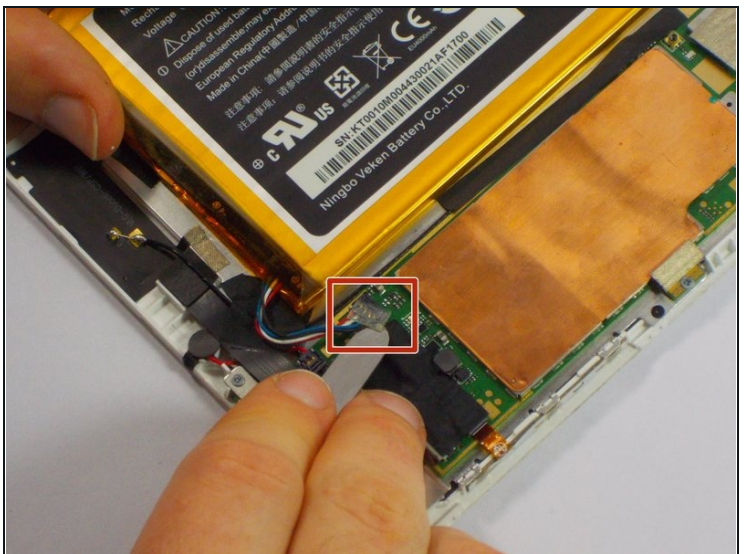
- Prepare your working space. The ideal work space has a flat, level surface that is clean and well lit.
- Shut down your Acer Iconia A1-830.
- Remove any cables or exterior covers from your tablet.
- Place it on your work space, with the screen facing up.

## Step 2



- Wedge the plastic opening tool into the tiny gap between the white plastic front bezel and the aluminum rear panel.
- Do not try to pry apart the top edge on the front side near the front-facing camera.

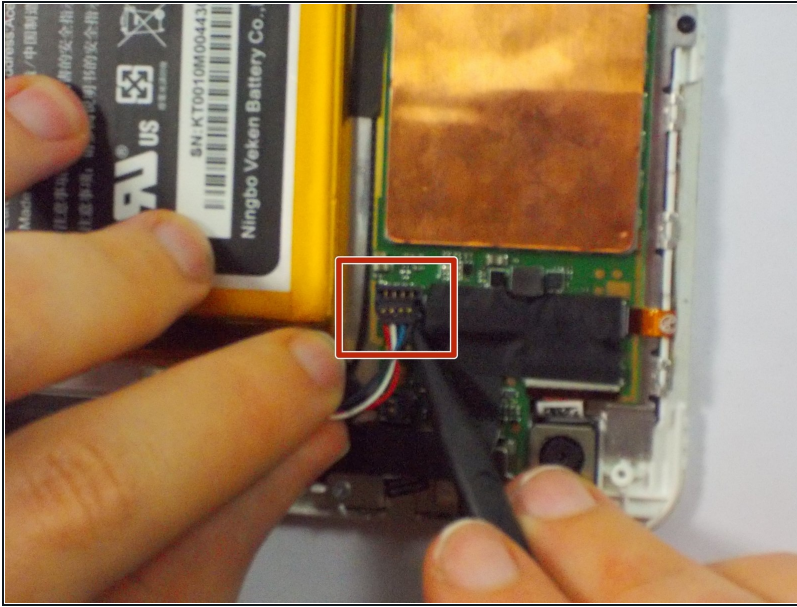
## Step 3 — Battery



- Remove the small clear plastic cover on top of the battery cable with the nylon or metal spudger.

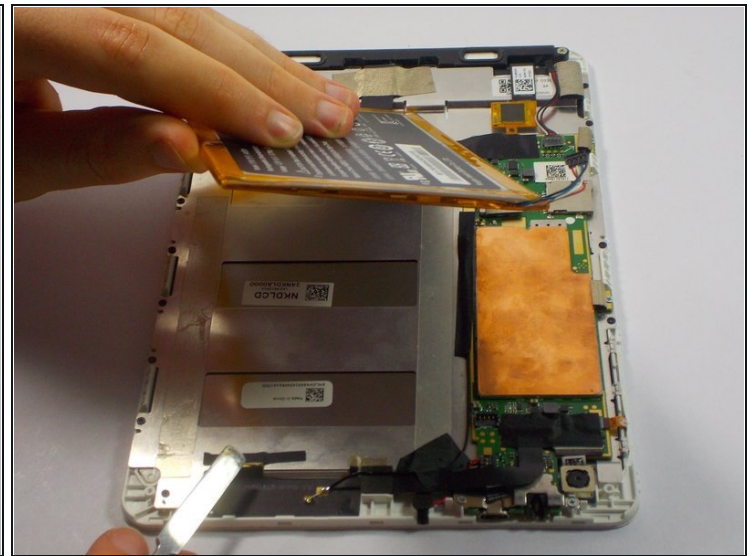
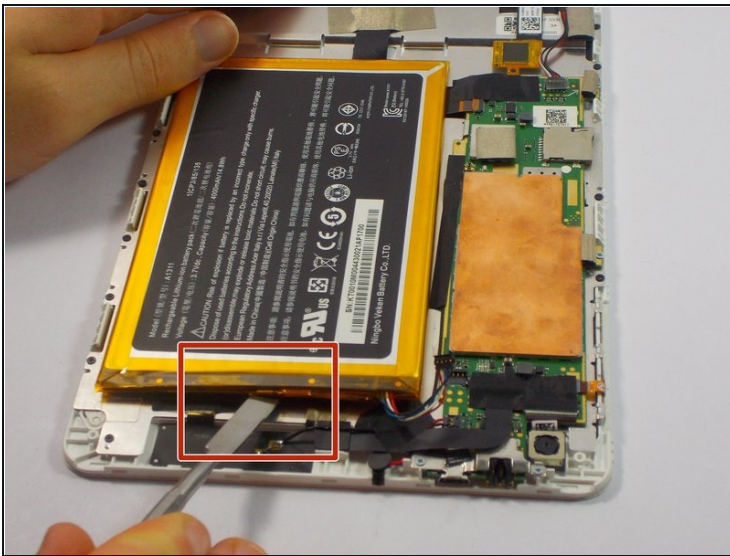


## Step 4



- Remove the battery cable by lifting it up with the pointy end of the black nylon spudger.

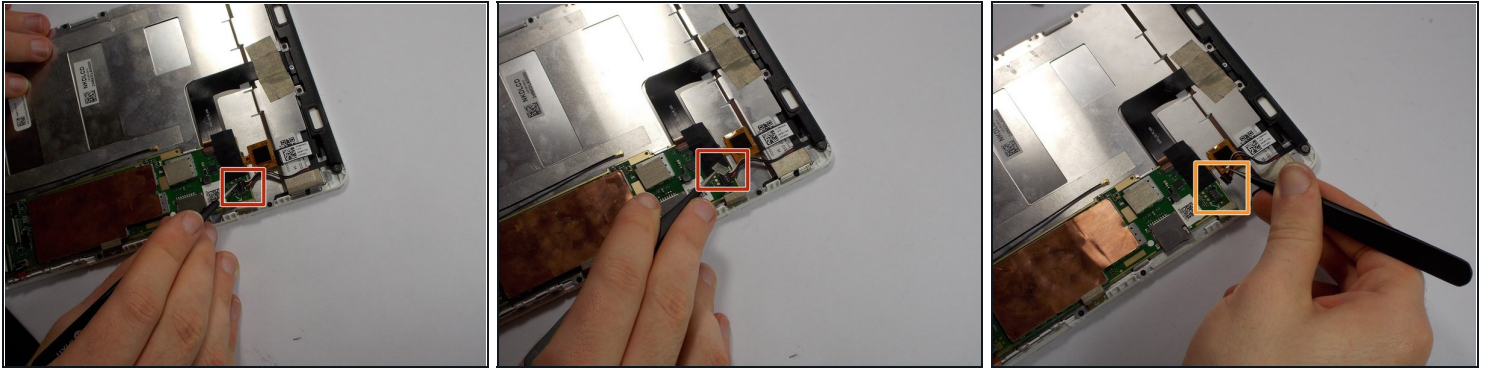
## Step 5



- Un-stick the battery from the metal plate using the black nylon spudger.

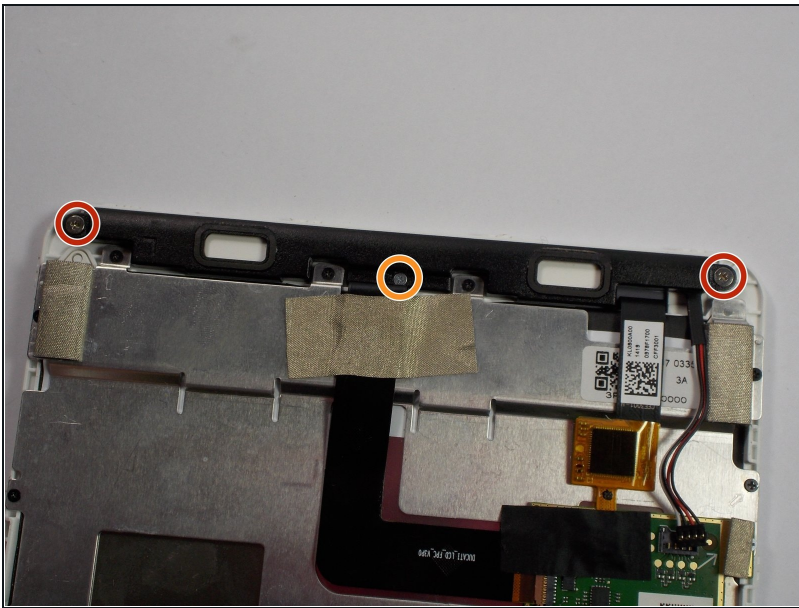
⚠ Be careful not to puncture the battery while removing it.

## Step 6 — Speaker Assembly



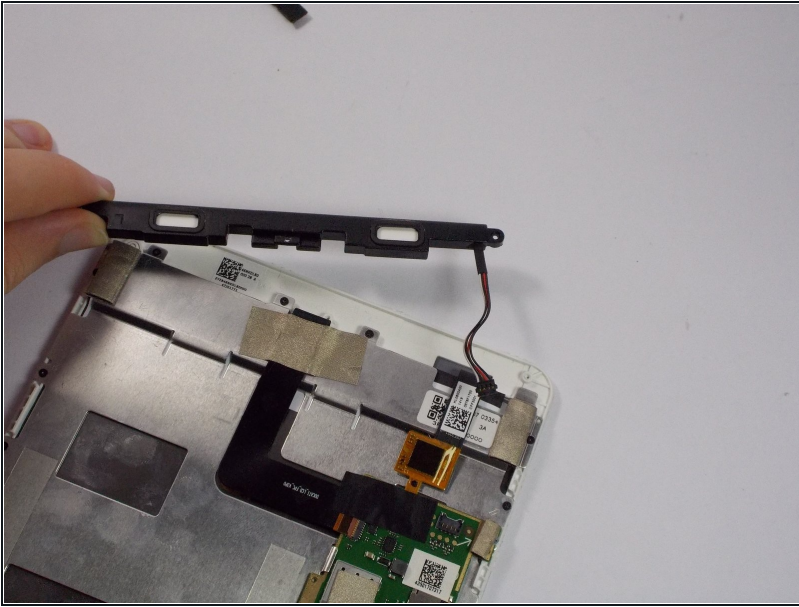
- Remove the small clear plastic cover from the speaker connector with the metal [tweezers](#).
- Lift out the speaker connector using the metal tweezers.

## Step 7



- Remove the two 2.8 mm Philips #00 screws using the #000 sized Philips screwdriver.
- Remove the 3.7 mm Philips #000 screw using the #000 size Philips screwdriver.

## Step 8



- Lift out the speaker assembly from the plastic frame.

---

To reassemble your device, follow these instructions in reverse order.