



Sony Xperia ZL Screen Replacement

Use this guide to replace the screen of the...

Written By: Liam Kanaley



INTRODUCTION

Use this guide to replace the screen of the Sony Xperia ZL.

TOOLS:

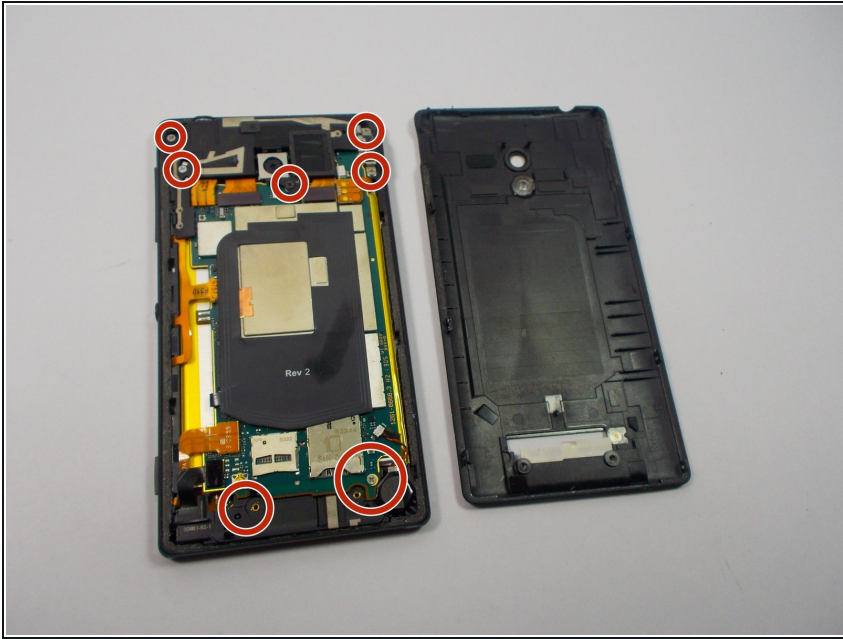
[JIS Driver Set](#) (1)

Step 1 — Screen



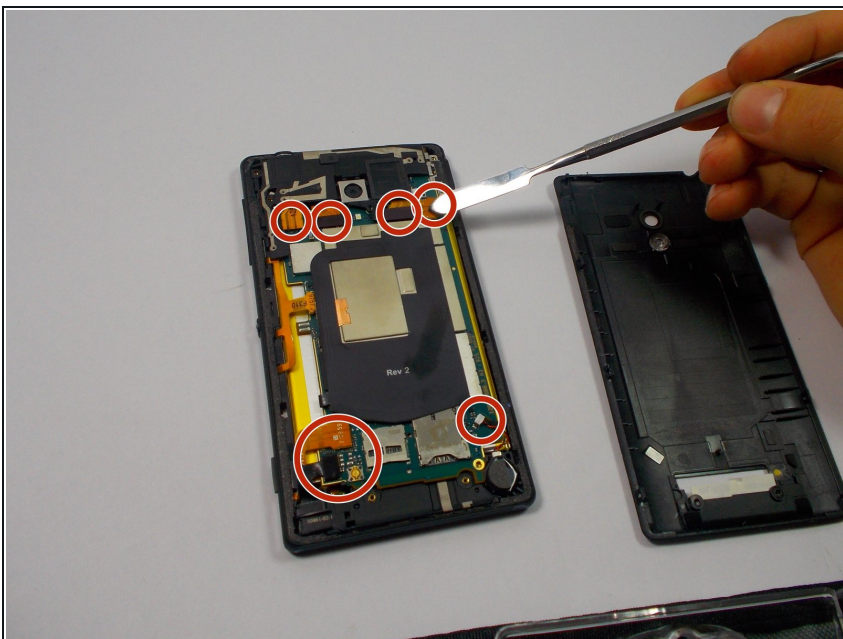
- Open the small cover on the bottom of the rear cover.
- Peel back the sticker under the cover to reveal two screws.
- Remove the two screws from the back of the phone.

Step 2



- Once the two screws have been removed. Take the prying tool to pry off the back cover of the phone. Next take a JIS J00 screwhead and unscrew the 5 screws that are located in the photo.

Step 3



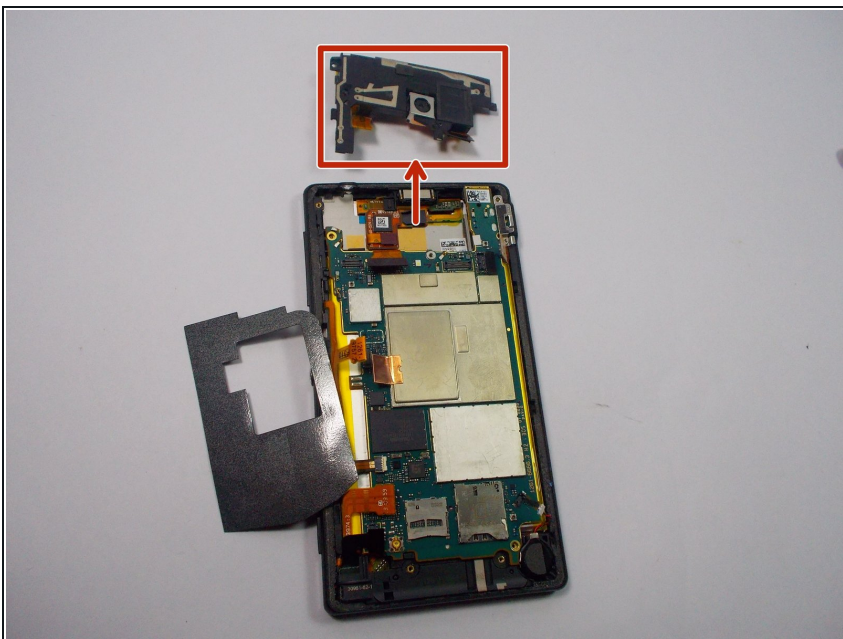
- After the screws have been taken out, disconnect the connectors circled to the left using a small plastic prying tool.
- Carefully pry connectors making sure to always use a plastic prying tool. Using a metal prying tool could damage the battery and potentially cause a fire.

Step 4



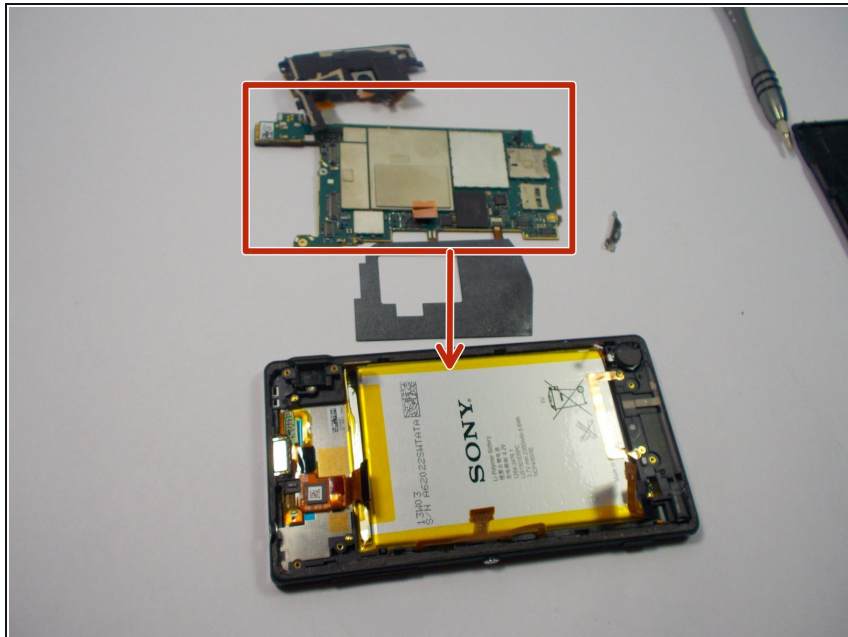
- The last connector is located under the black sticker. Peel back the black sticker and disconnect the last connector.

Step 5



- With all the connectors removed we can safely pry off the camera and all of its components using a plastic prying tool.

Step 6



- Removing the camera and its components makes the electrical panel easily come off. Gently pry off the electrical panel.

Step 7



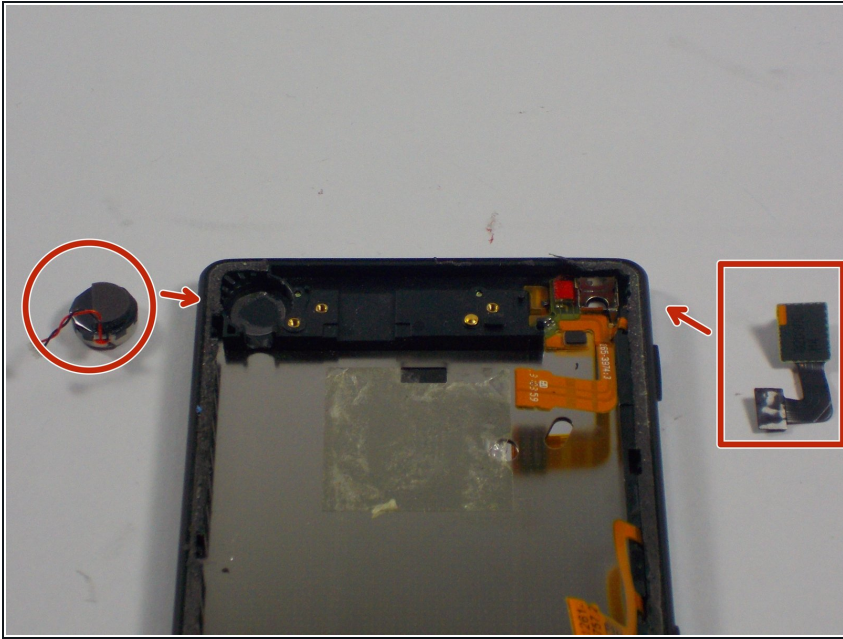
- Take a small plastic prying tool and pry out the battery. The battery has adhesive tape that connects it to the phone which can make it difficult to pry out. Make sure to try prying from different angles of the battery.

Step 8



- With the battery gone, we next pry off the plastic covering that is located at the top of the phone using a metal spatula.

Step 9



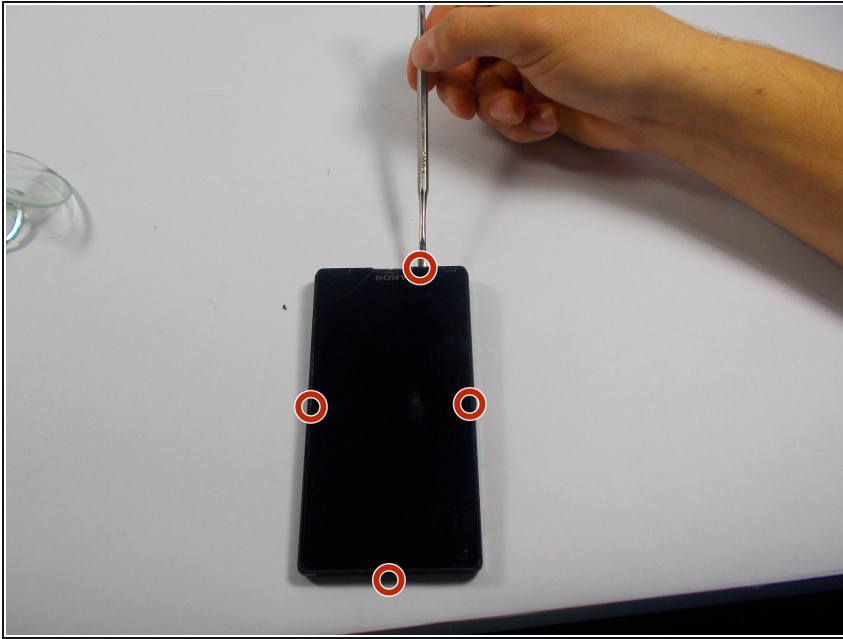
- Once the plastic covering is removed, the front camera and signal receptor can be taken off the phone. You should use the prying spatula to remove these two items. Be careful with prying out the signal receptor because it has adhesive tape underneath.

Step 10



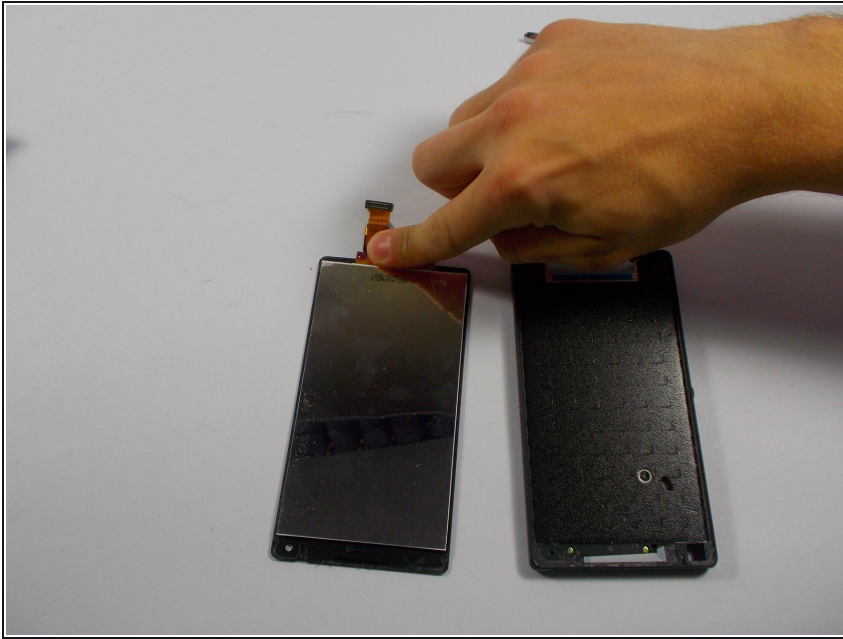
- Next pry off the long plastic piece that goes around the perimeter of the left side of the phone. This part contains the volume and power button. The little component where the camera goes will need to be removed. Be careful when removing the front camera components because there is adhesive tape under it.

Step 11



- Next take a small prying tool to separate the glass screen and the frame around the screen. In most procedures the front screen will crack during this step, but luckily our's didn't. It is okay if the screen cracks, just make sure to pry off all the glass.
- A good tip would be to pry into the spots located in the picture.

Step 12



- Once you lift the glass, carefully pry off the adhesive tape around the edges of the phone. Once it has been taken off, carefully remove the screen from the frame and make sure the digitizer that is connected to the screen gets carefully taken out.
- The digitizer will be taken out carefully through a small hole at the base of the phone. This needs to be taken out carefully.

To reassemble your device, follow these instructions in reverse order.