



# Sony Xperia ZL Volume and Power Button Replacement

Replace the volume and power button on your Sony Xperia ZL.

Written By: Liam Kanaley



---

## INTRODUCTION

Use this guide to replace the volume and power button on your Sony Xperia ZL. You will need a plastic prying tool and a JIS #00 Screwdriver. This guide is useful if your power button stops working. It can also be used to replace the volume buttons. Make sure the phone is completely powered off before starting.



### TOOLS:

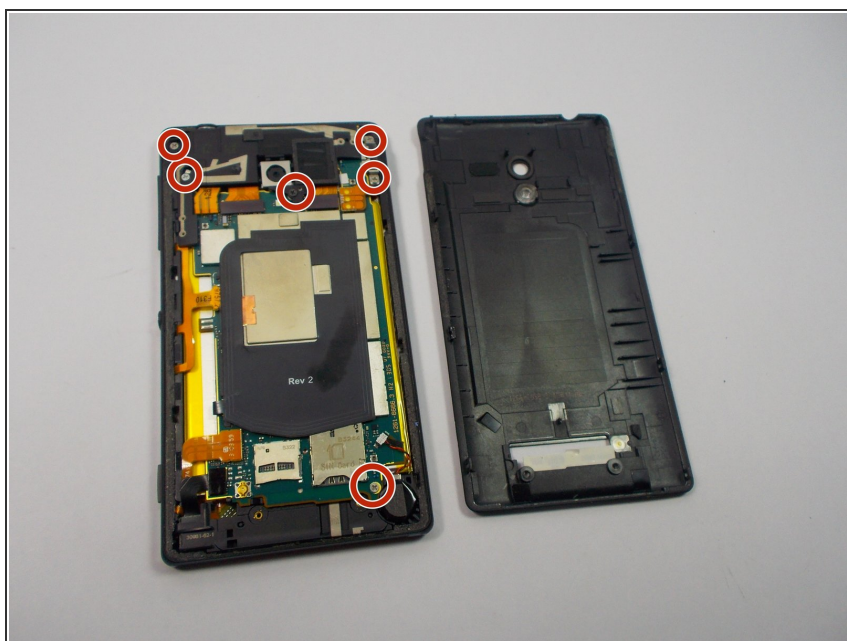
- [JIS #00 Screwdriver](#) (1)
  - [iFixit Opening Picks \(Set of 6\)](#) (1)
  - [Spudger](#) (1)
-

## Step 1 — Volume and Power Button



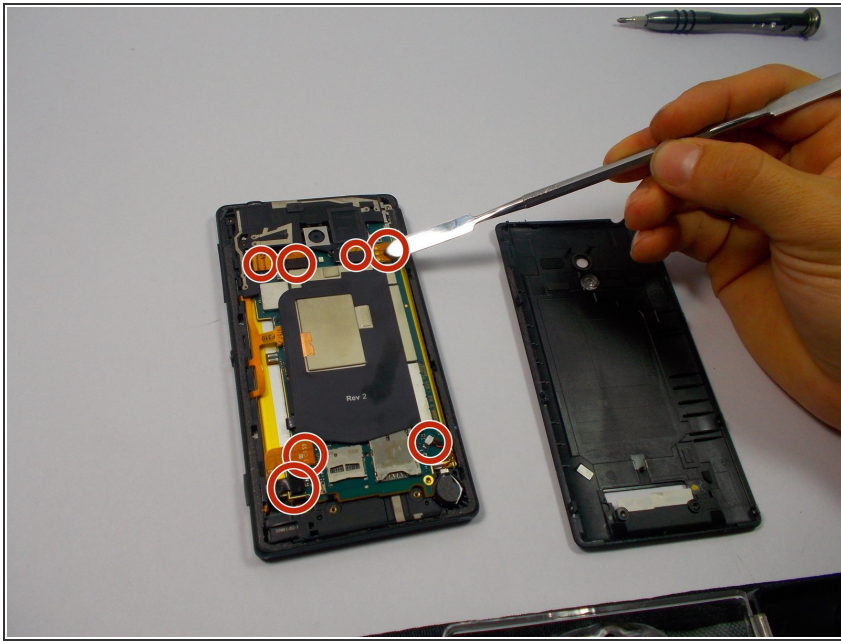
- Open the small cover on the bottom of the rear cover.
- Peel back the sticker under the cover to reveal two screws.
- Remove the two JIS #00 screws from the back of the phone.

## Step 2



- Remove the six screws from the phone using a JIS #00 screwdriver.

## Step 3



- Use a nylon spudger to disconnect the seven connectors.

⚠ Never use a metal spudger around the battery. Use plastic or nylon prying tools instead.

## Step 4

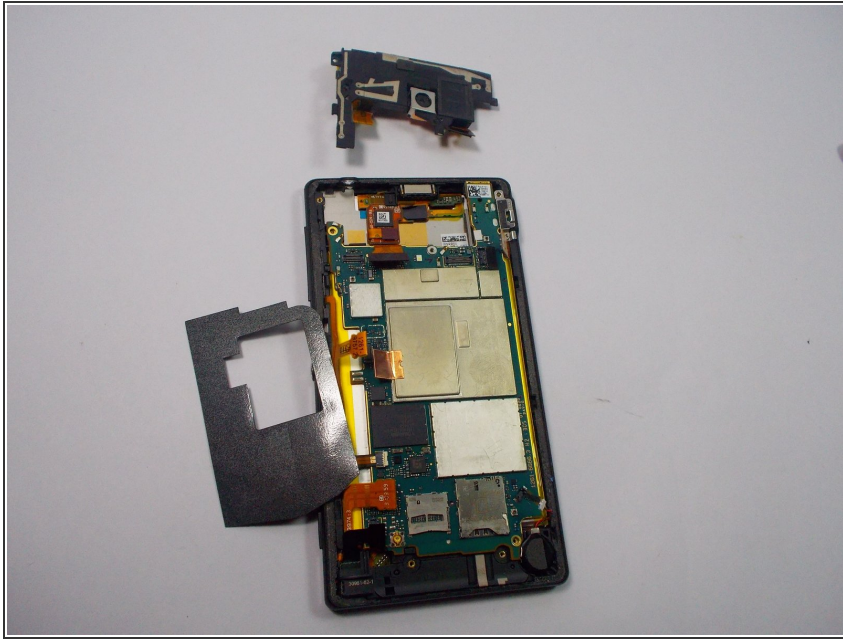


ⓘ The last connector is located under the back sticker.

- Peel the sticker back to get access of the connector and use a nylon spudger to disconnect it.



## Step 5



- Remove the camera assembly using an opening tool or spudger.

## Step 6



- Remove the motherboard with an opening tool or spudger.

## Step 7



- Remove the battery with a plastic opening tool or spudger.
- ① The battery has adhesive tape that connects it to the phone which makes it difficult to pry out.
- ⚠ Never use metal prying tools on the battery. Be sure to use a plastic prying tool to avoid puncturing the battery.

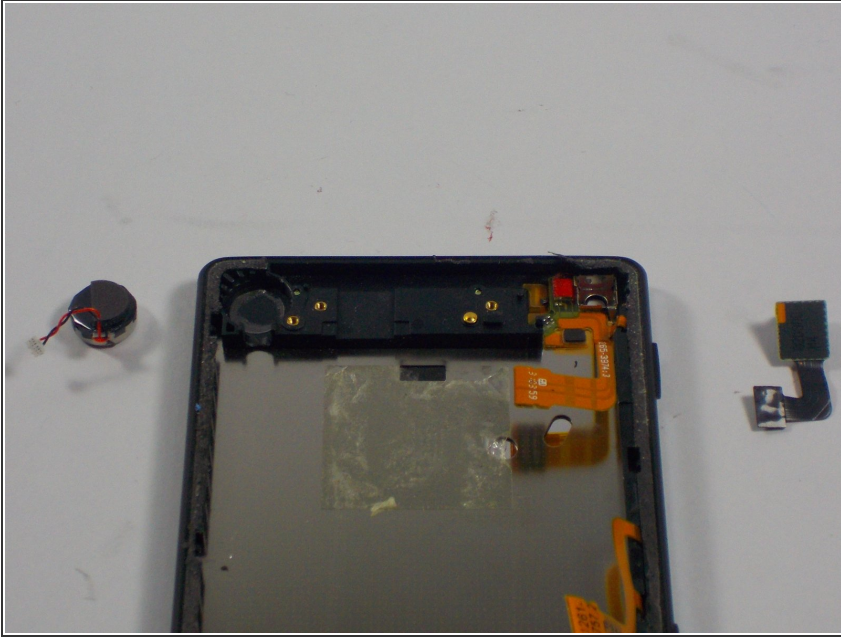
## Step 8



- Detach the plastic covering from the top side of the phone by hand.



## Step 9



- Pry off the signal receptor and front camera using an opening tool or spudger.

⚠ The signal receptor has adhesive tape underneath so proceed with caution when prying.

## Step 10



- Remove the volume and power button with an opening tool or spudger.
- ★ For replacement, this component comes as a whole. If the volume and power button do not work, they will need to be replaced together.

To reassemble your device, follow these instructions in reverse order.