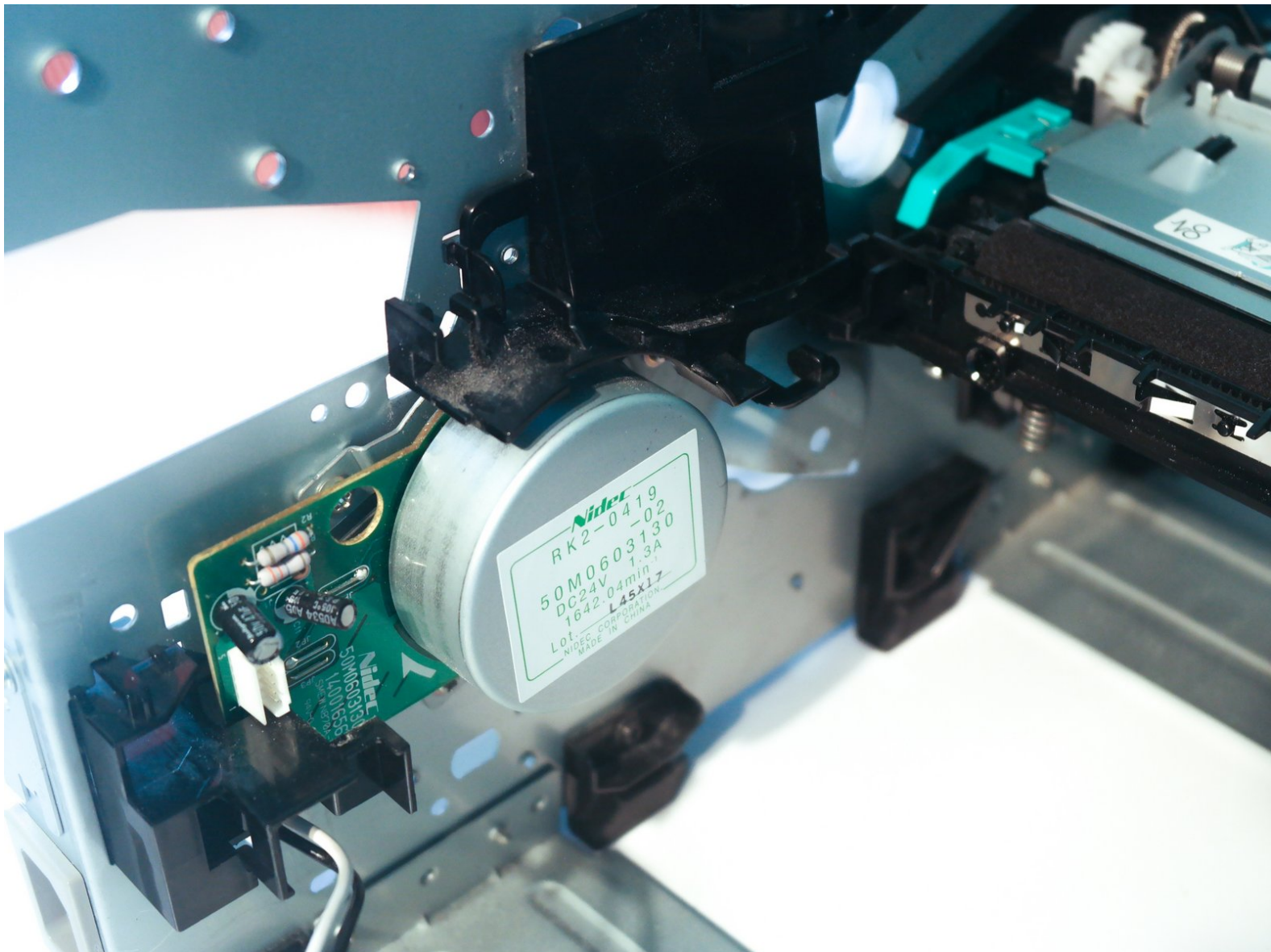




# HP LaserJet 1160 or 1320 Main Motor Replacement

Written By: jdp23





## TOOLS:

- [8" Needle Nose Plier](#) (1)
- [Metal Spudger Set](#) (1)
- [Phillips #0 Screwdriver](#) (1)



## PARTS:

- [HP LaserJet 1160 or 1320 Main Motor](#) (1)

## Step 1 — Left Side Cover



- Pull on the two tabs on the back of the printer to release the left side cover.
- Remove the cover by rotating it towards the front of the printer.

## Step 2 — Right Side Cover



- With the printer turned so that the right side is facing upwards, use a metal spudger to disengage 3 tabs holding the right side cover in place.
- Lift the cover off of the printer.

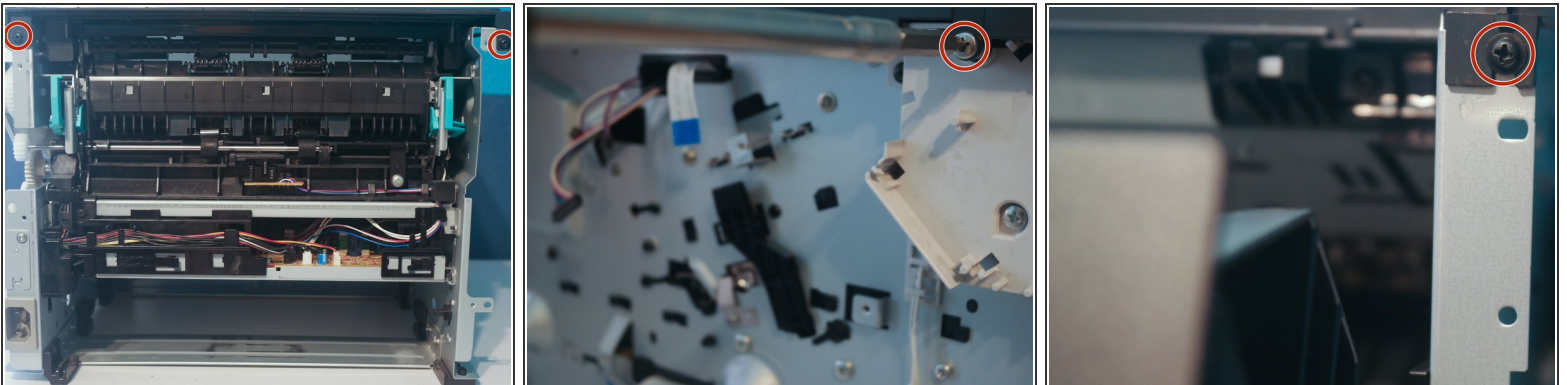


### Step 3 — Back Cover



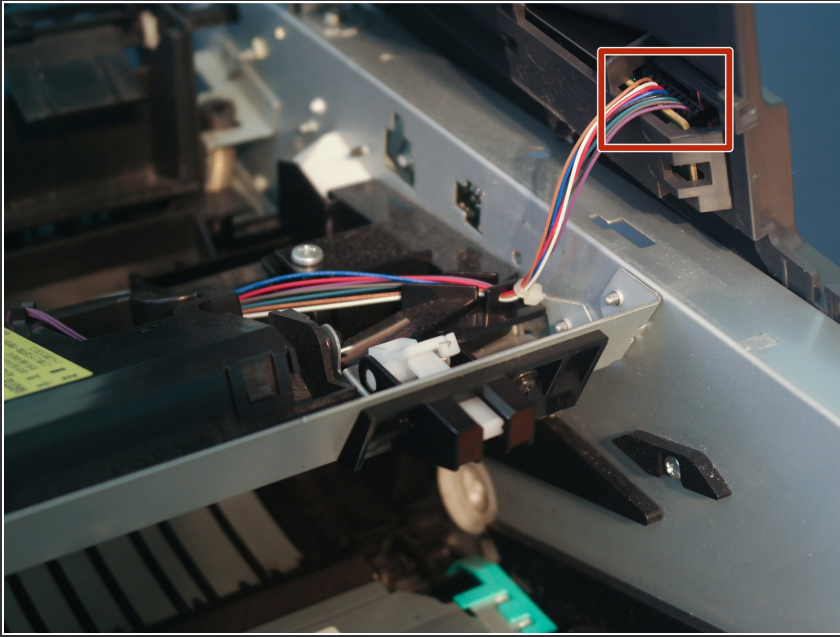
- Remove 4 screws on the back of the printer.
- Remove the back cover.

### Step 4 — Top Cover



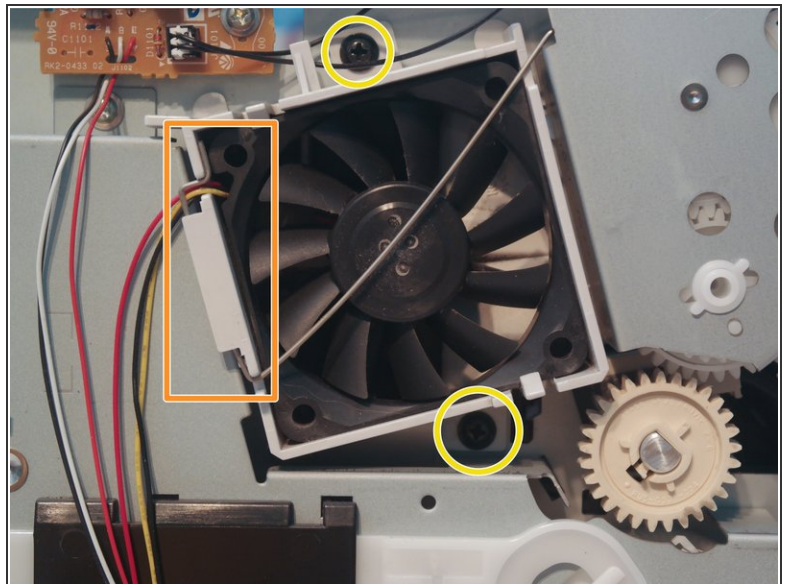
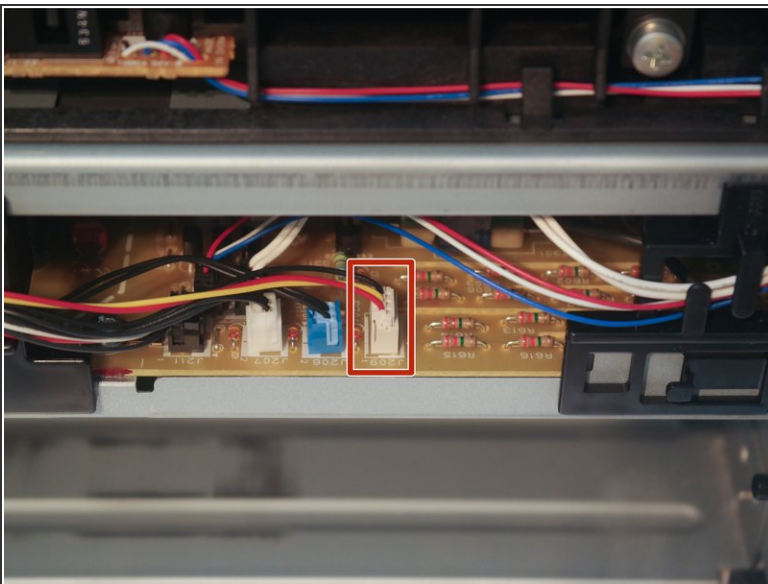
- Remove 2 screws on the back of the printer, one on the left, and one on the front.
- i* The second image shows the formatter removed, but it is not necessary to remove the formatter to replace the top cover.

## Step 5 — Top Cover



- Disconnect the control panel cable and remove the top cover.

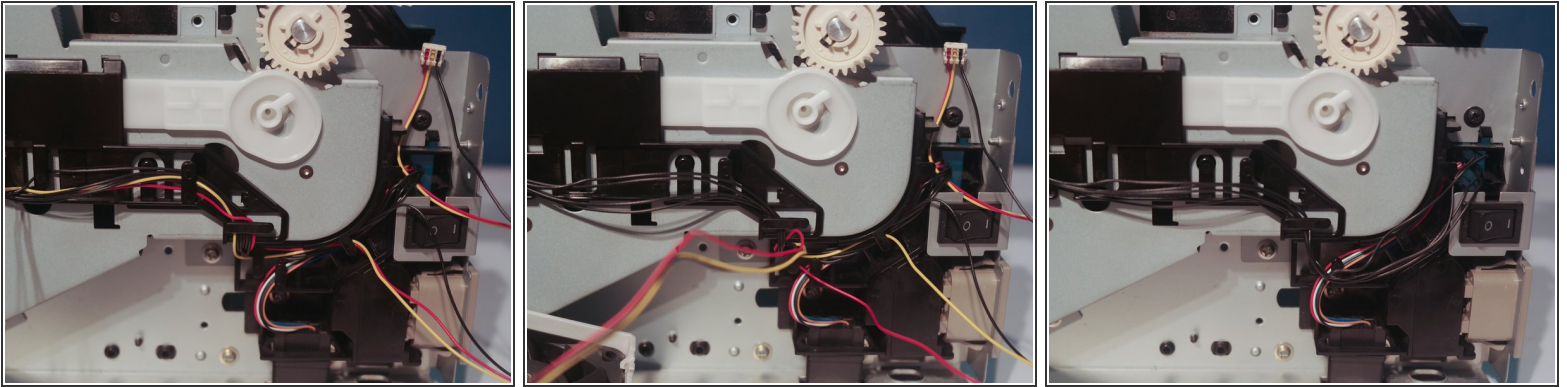
## Step 6 — Fan



- Disconnect the fan cable from the main board of the printer.
- Remove the retaining clip holding the fan in.
- Remove the 2 screws holding the fan in.

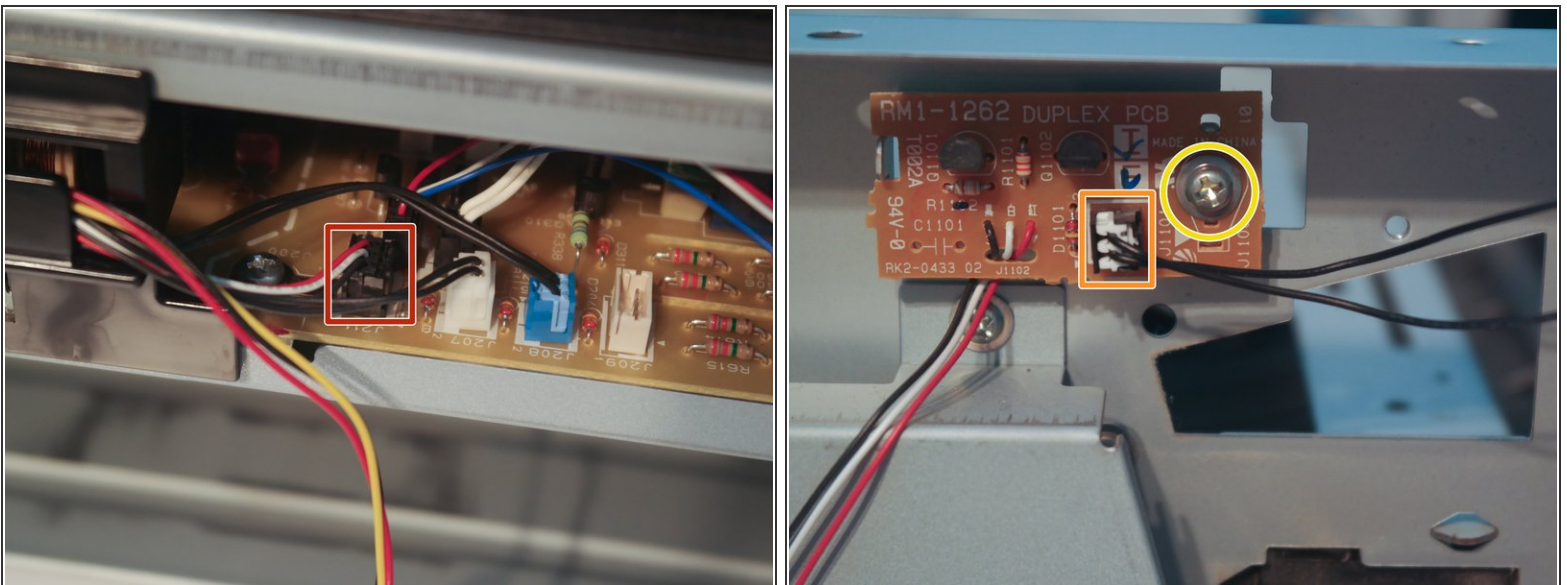


## Step 7 — Fan Cable



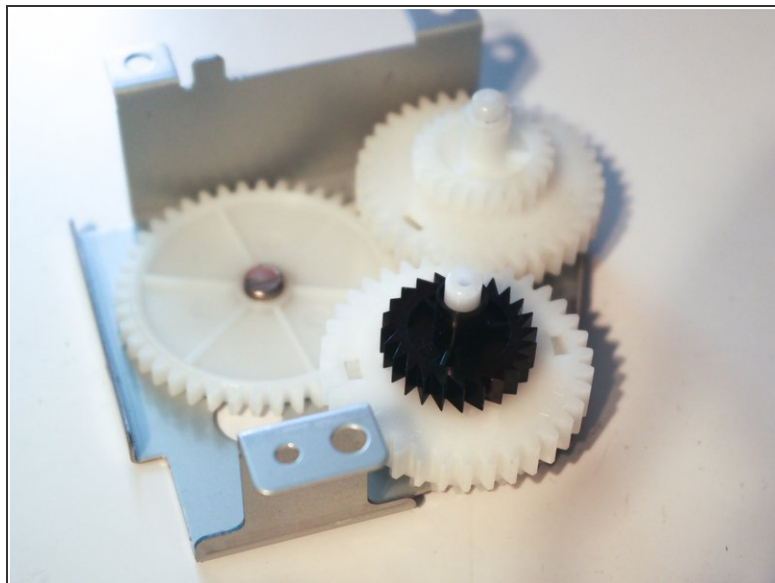
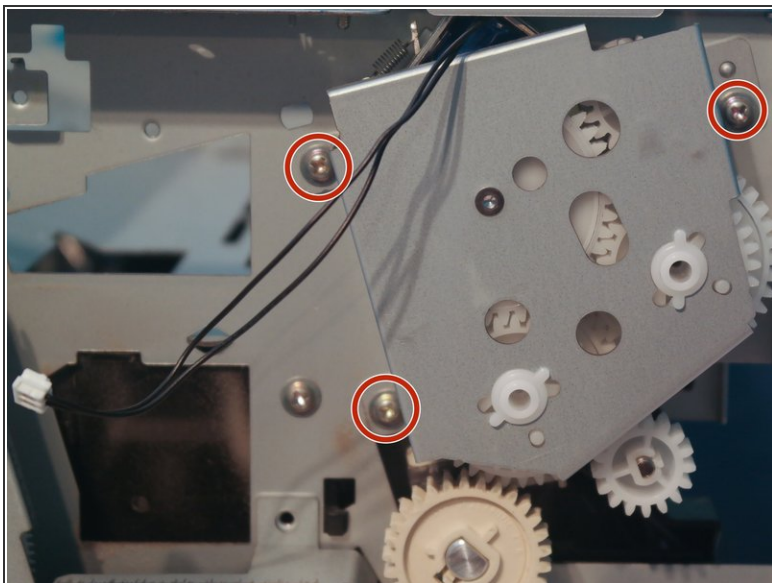
- Remove the fan cable from the cable guide.

## Step 8 — Duplexer PCB



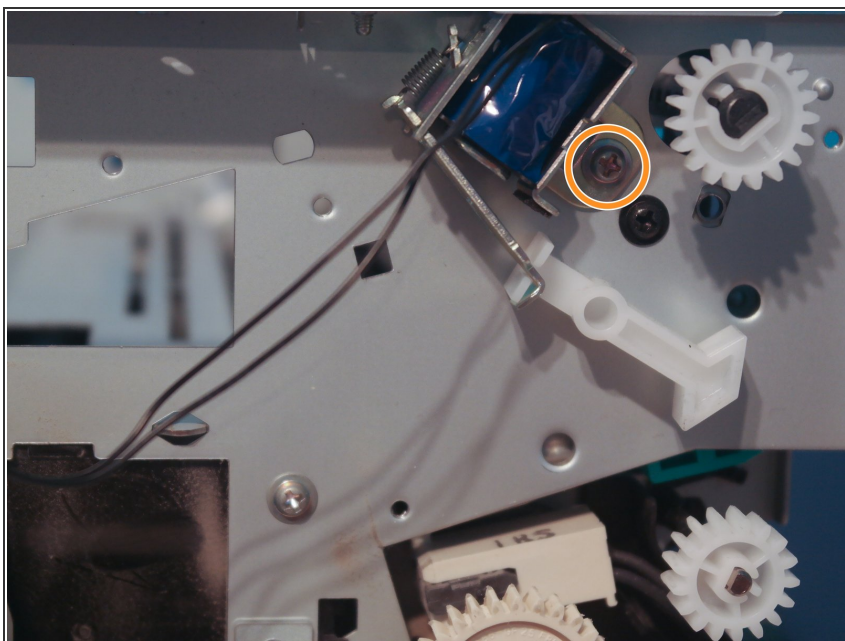
- Disconnect one cable from the main board of the printer.
- Disconnect the duplexer solenoid cable from the duplexer PCB.
- Remove one screw on the duplexer PCB and remove the PCB from the printer.

## Step 9 — Duplexer Gears



- Remove 3 screws holding the duplexer gears to the printer and remove the gears.

## Step 10 — Duplexer Solenoid



- Remove one screw to remove the solenoid from the printer.

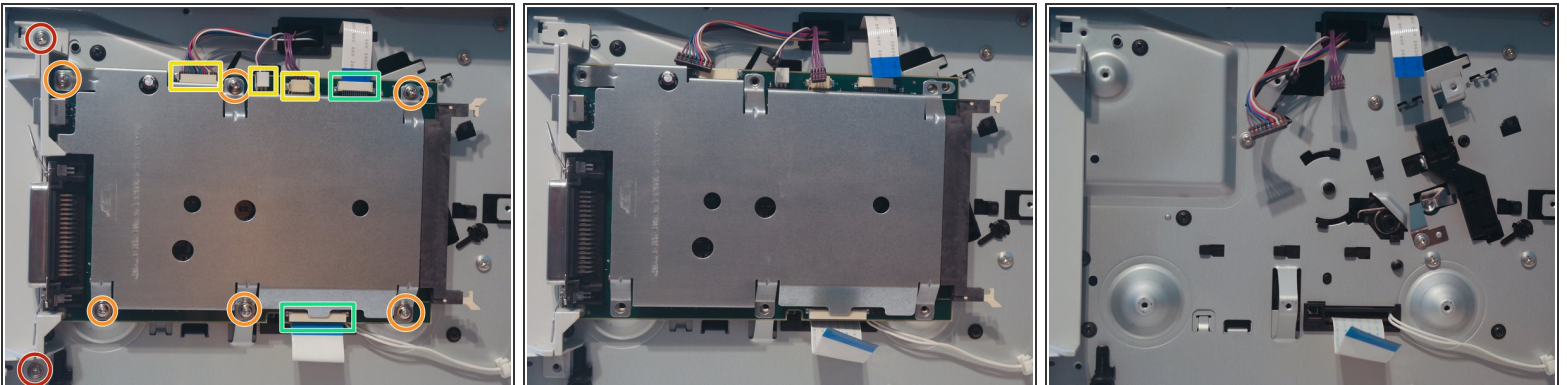


## Step 11 — Left Side Cover



- Pull on the two tabs on the back of the printer to release the left side cover.
- Remove the cover by rotating it towards the front of the printer.

## Step 12 — Formatter

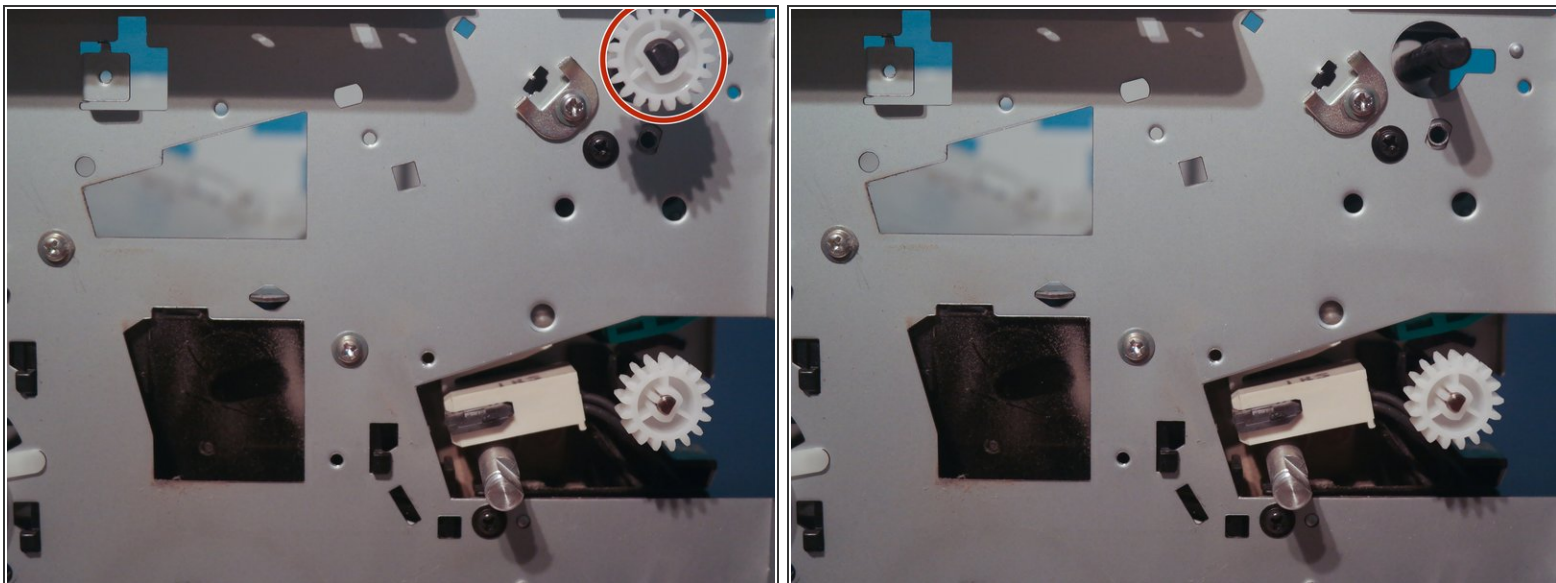


- Remove 2 screws on the I/O port cover.
  - Remove 6 screws on the formatter.
  - Disconnect 3 connectors from the formatter.
  - Disconnect 2 flat flexible cables from the formatter.
  - Remove the formatter from the printer.
- ⚠ Be careful not to fold, crease, or tear flat flexible cables.

**i** The I/O port cover will need to be transferred to the new formatter before installing it.

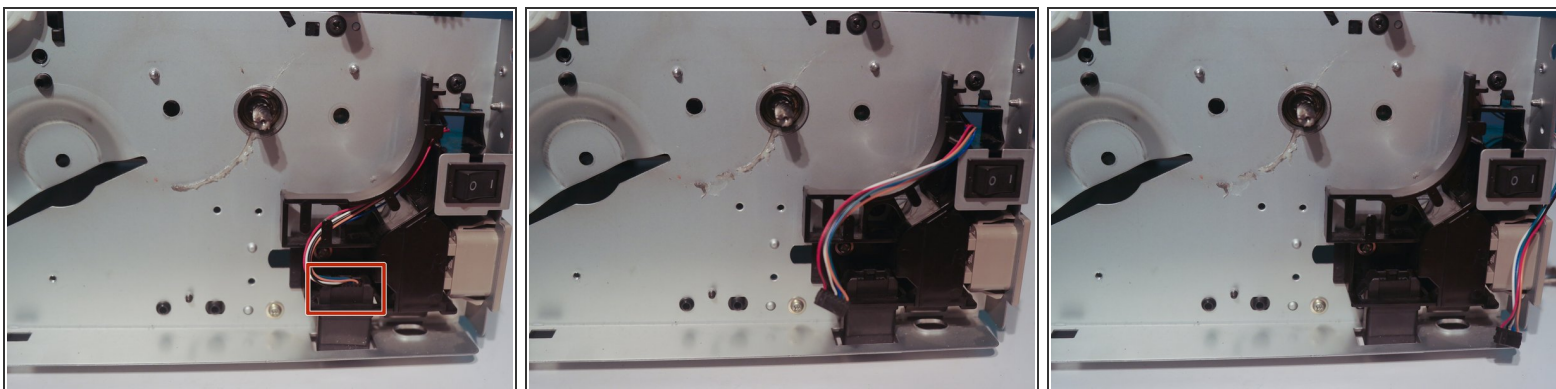


## Step 13 — Fuser Gear



- Remove the fuser gear by pushing in on the tab with a metal spudger.

## Step 14 — Tray Connector



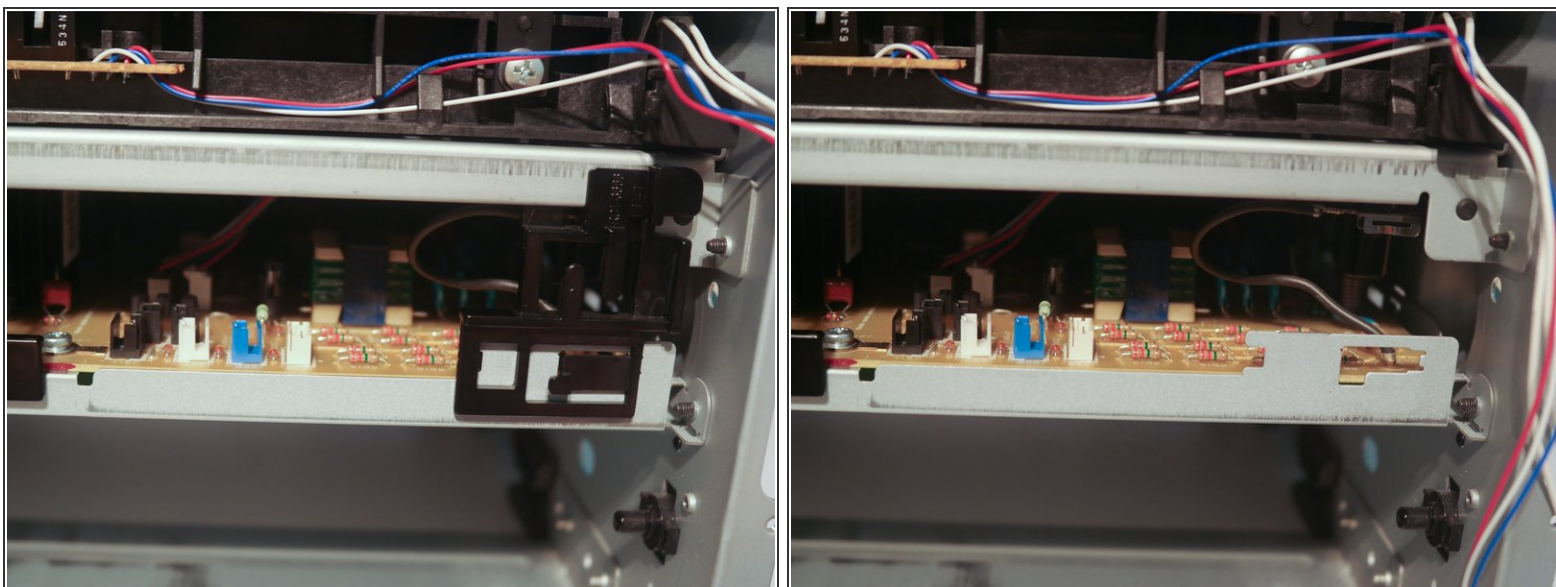
- Disconnect the cable to the tray connector and route it through the hole in the chassis.

## Step 15 — Fuser Cables



- Disconnect 2 cables from the main board and route them through the cable guide.

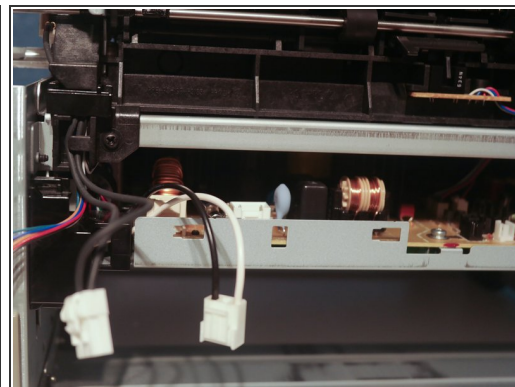
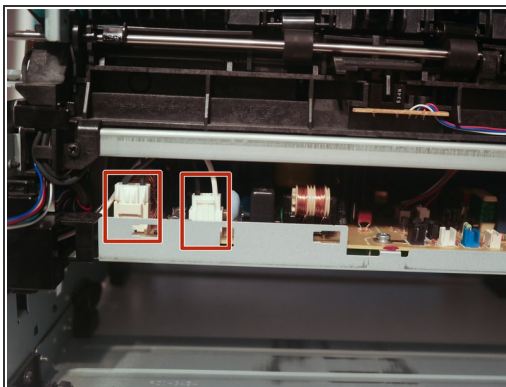
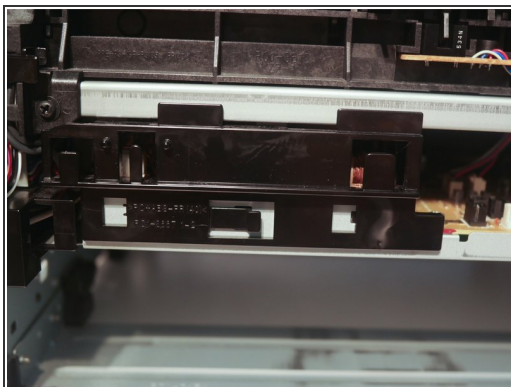
## Step 16 — Fuser Cables



- Remove the cable guide from the chassis.

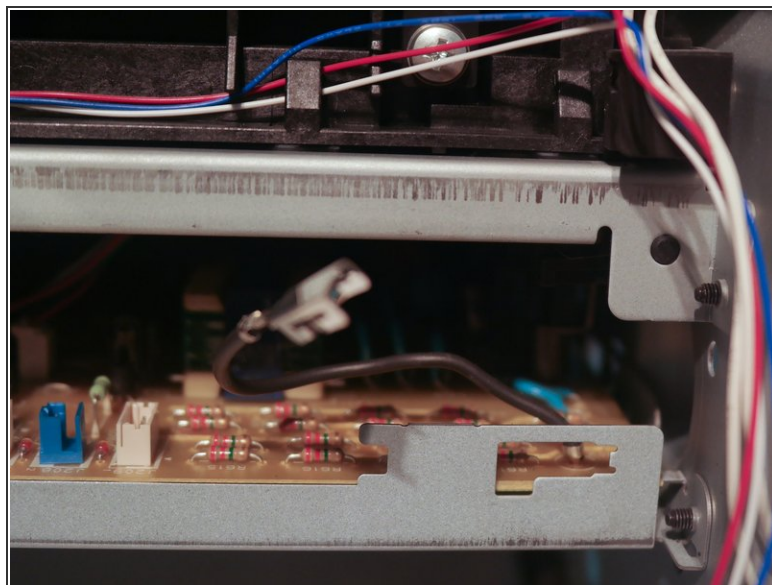
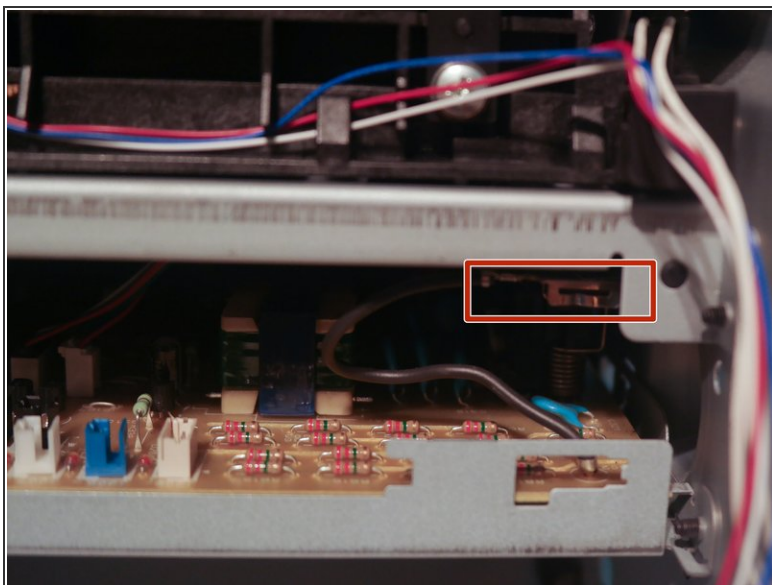


## Step 17 — Fuser Cables



- Remove the cable guide from the other side of the chassis.
- Disconnect 2 cables from the main board.

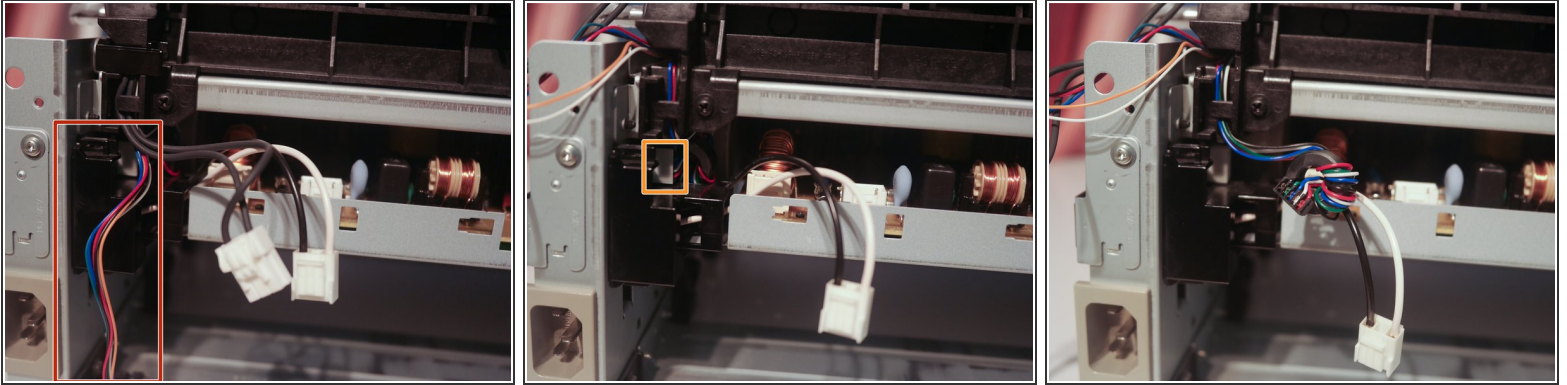
## Step 18 — Fuser Cables



- Use needle nose pliers to disconnect the high voltage wire from the fuser.

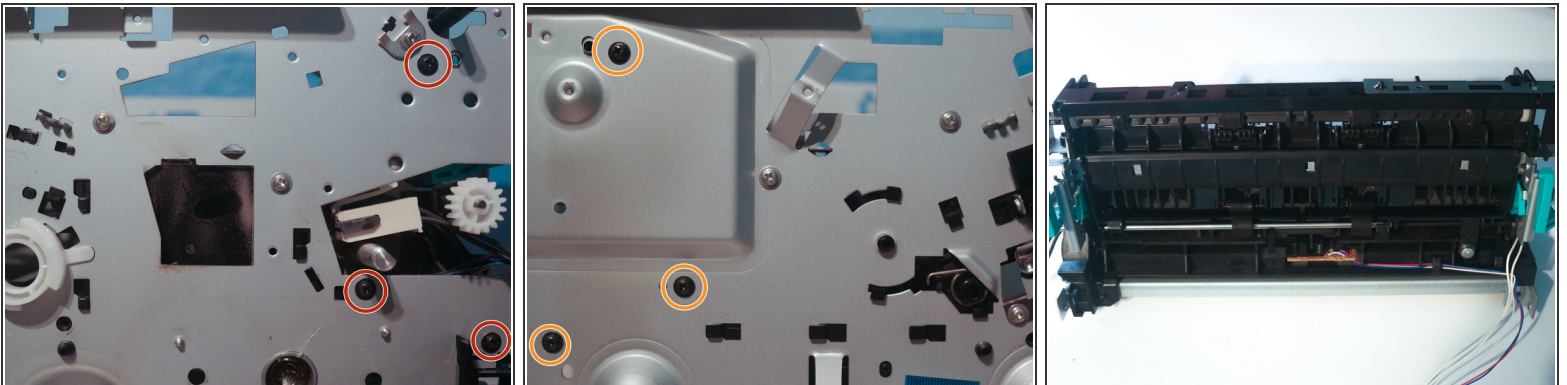


## Step 19 — Fuser Cables



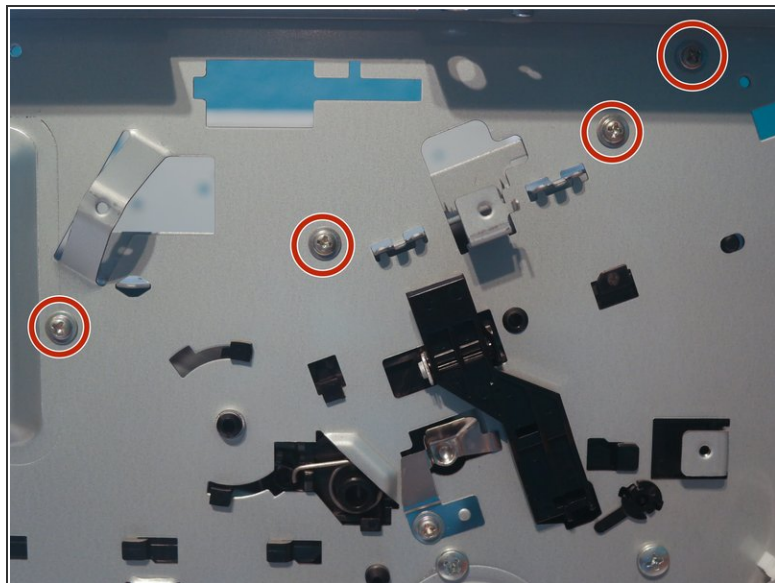
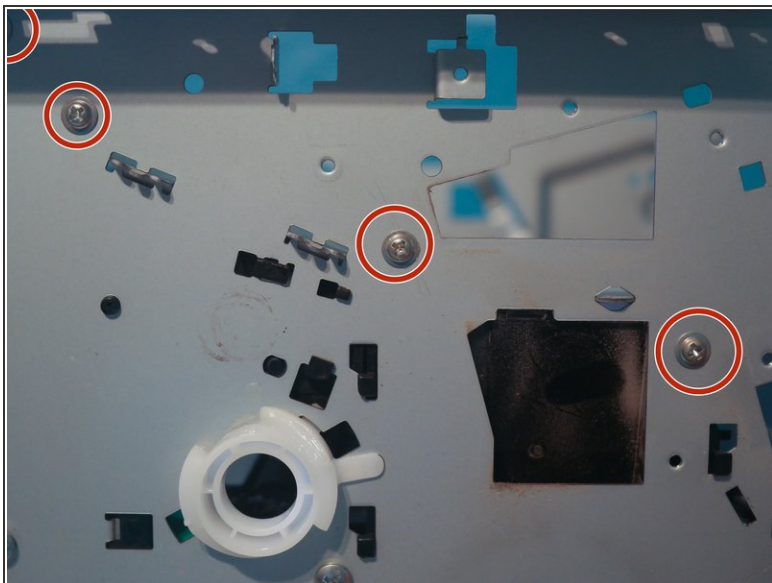
- Remove the tray connector cable from the cable guide.
- Disconnect the main motor cable.

## Step 20 — Fuser



- Remove 3 screws from the right side of the printer.
- Remove 3 screws from the left side of the printer.
- The fuser assembly can now be removed from the printer.

## Step 21 — Midframe



- Remove 4 screws from each side of the printer to remove the mainframe.

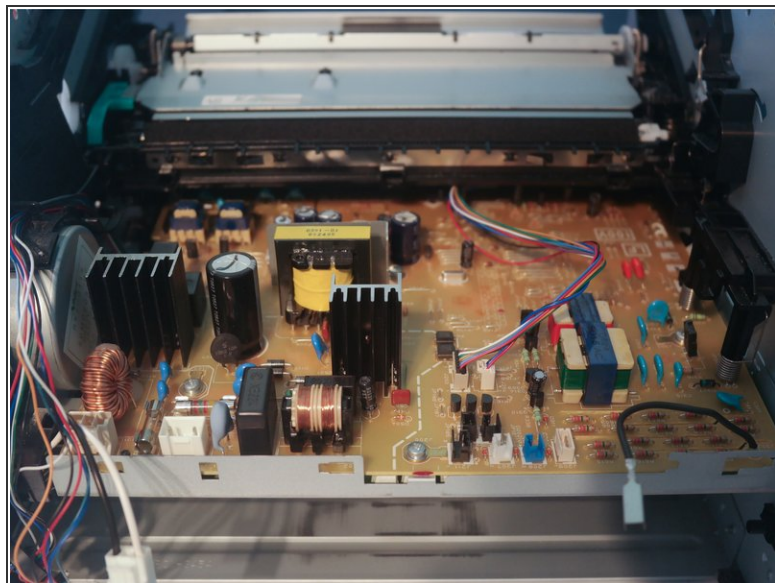
## Step 22 — Safety Interlock Assembly



- Remove 3 screws from the safety interlock assembly (one on top) and remove it from the printer.

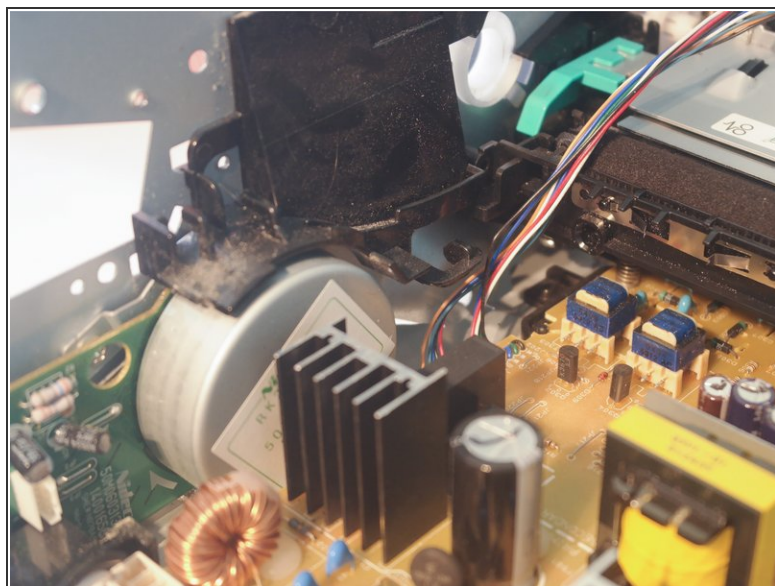
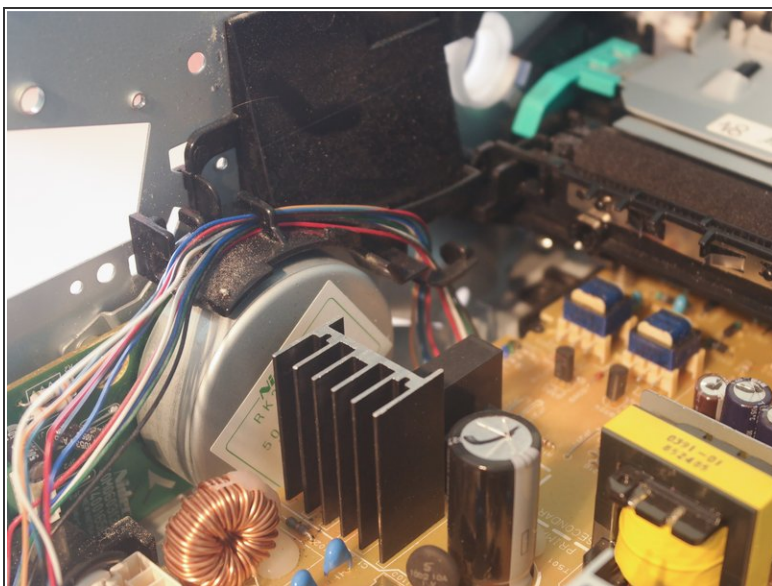


## Step 23 — Feed Plate



- Remove the feed plate from over the main board.

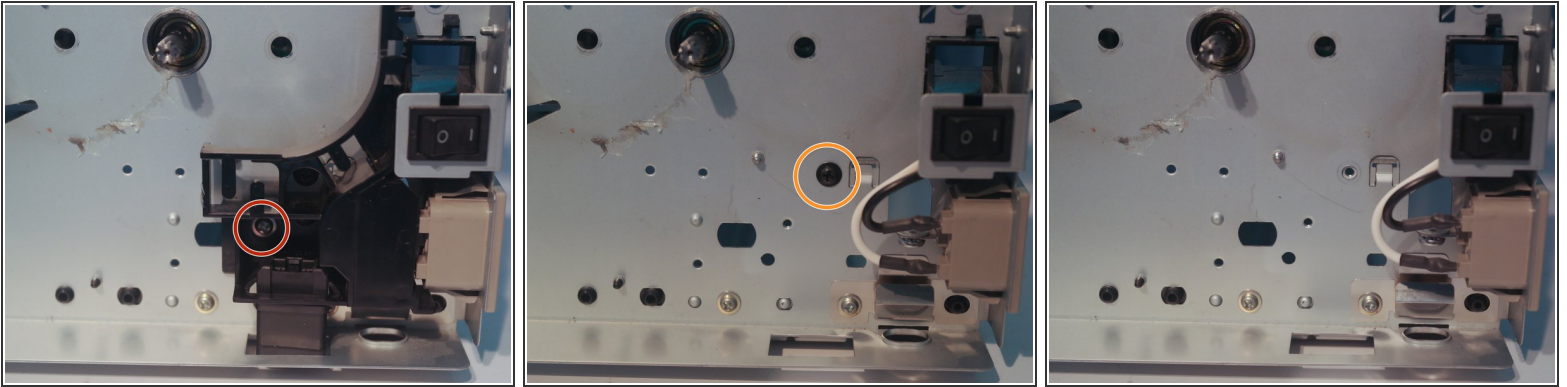
## Step 24 — Main Board Cables



- Remove the tray connector and motor cables from the cable guide.

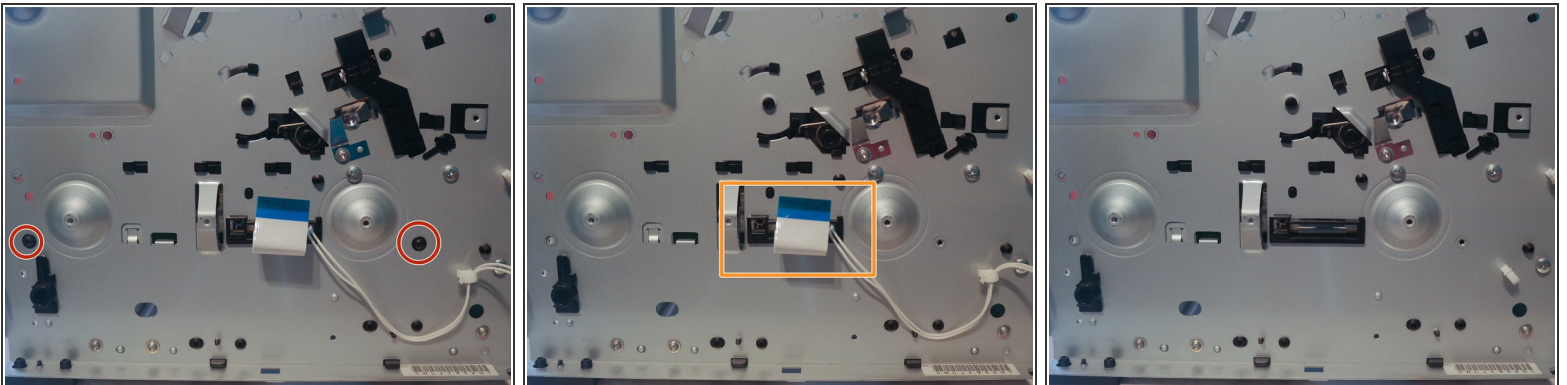


## Step 25 — Cable Guide



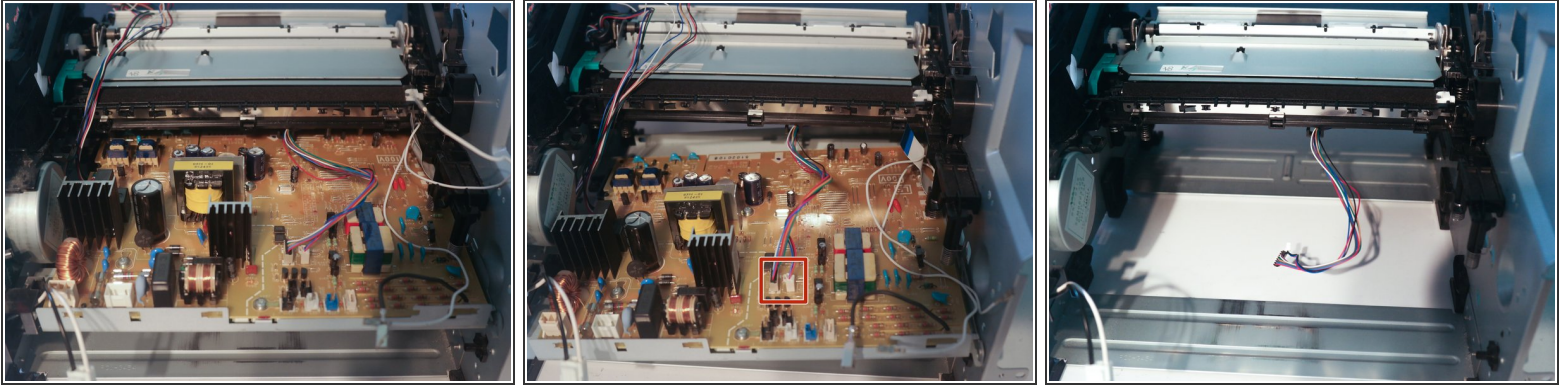
- Remove one screw from the cable guide and remove the cable guide from the chassis.
- Remove one screw from the chassis.

## Step 26 — Main Board



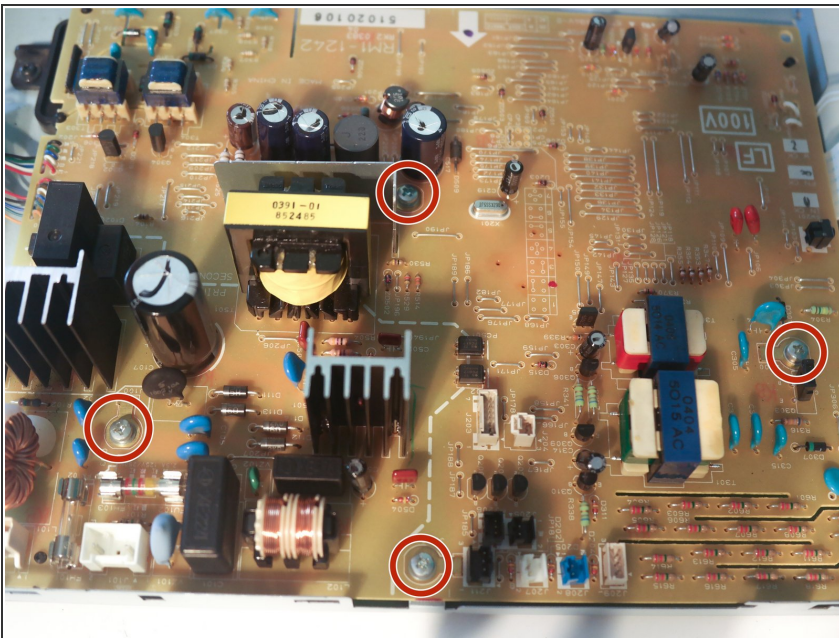
- Remove 2 screws from the left side of the chassis.
- Push the formatter and safety interlock cables through the hole in the chassis.

## Step 27 — Main Board



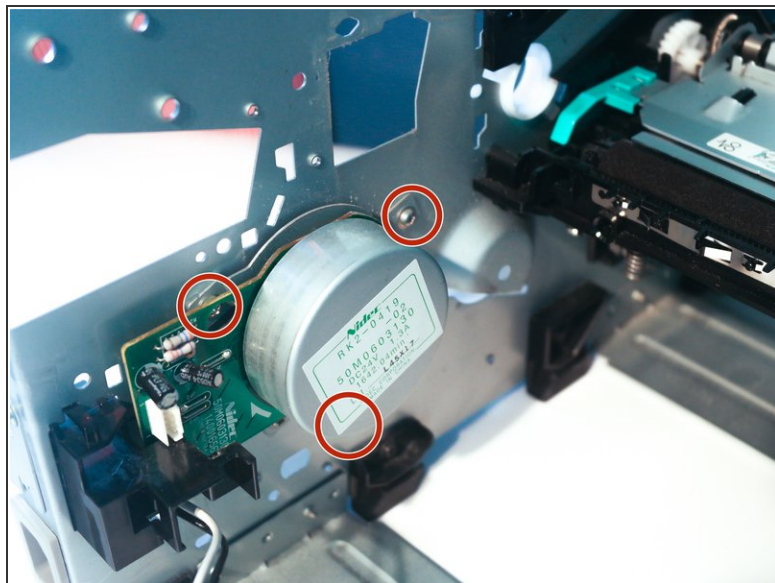
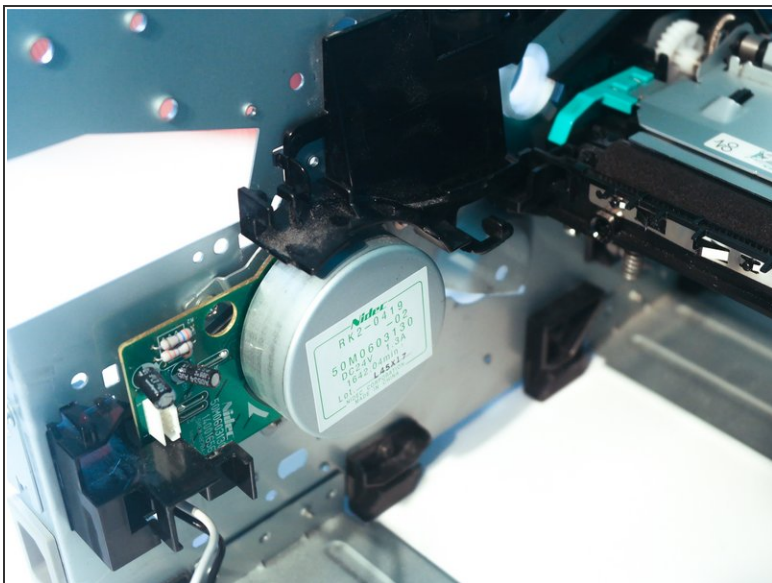
- Bend the chassis to allow the control board to come loose, and disconnect the 2 cables from the paper feed assembly.
- Remove the main board from the printer.

## Step 28 — Main Board



- Remove 4 screws on the control board to remove it from its metal plate.

## Step 29 — Main Motor



- Remove the cable guide from the chassis.
- Remove 3 screws to remove the main motor.

To reassemble your device, follow these instructions in reverse order.