



Dell Inspiron 8600 CD-Rom Drive Replacement

This guide will show you how to remove the...

Written By: Brian Murphy



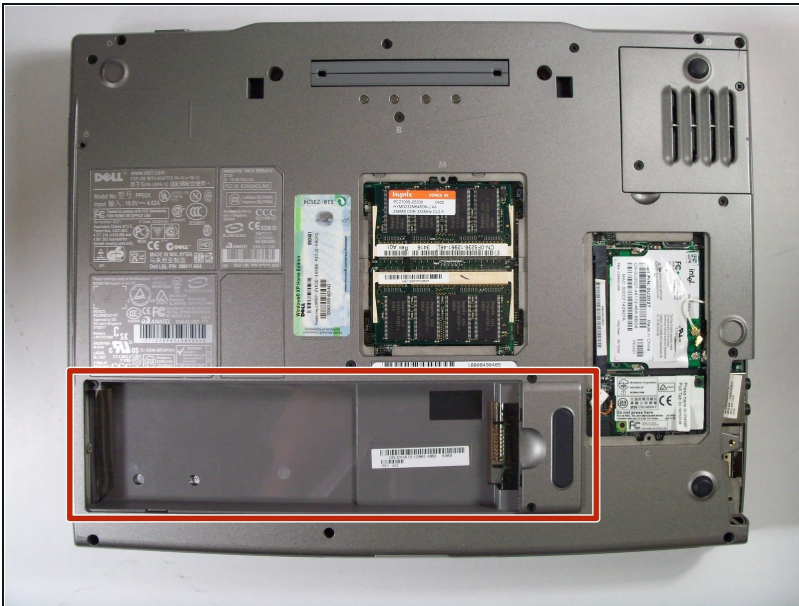
INTRODUCTION

This guide will show you how to remove the CD-Rom Drive and replace it with a properly functioning one.


TOOLS:

Phillips #1 Screwdriver (1)

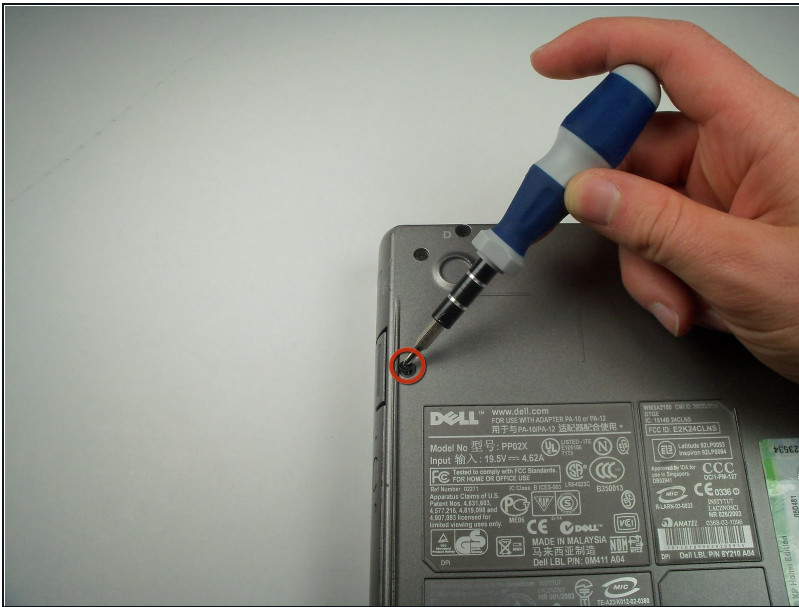
Step 1 — Battery



- Remove the battery from the bottom left of the laptop as shown.

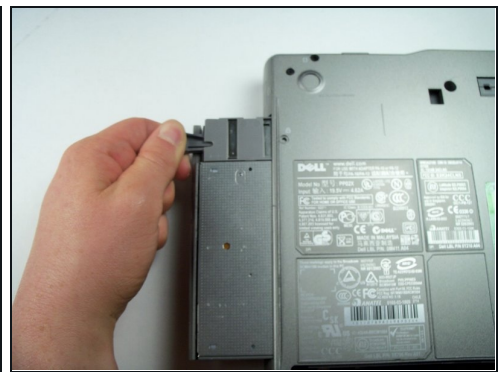
 **Remove the battery before operating on the computer to avoid electrocution.**

Step 2 — CD-Rom Drive



- Locate and remove the screw that secures the CD-Rom Drive.

Step 3



- Push the button on the lower right hand side of the CD-Rom drive component.
- The button should pop out.
- Then pull out the CD-Rom Drive from there.

To reassemble your device, follow these instructions in reverse order.