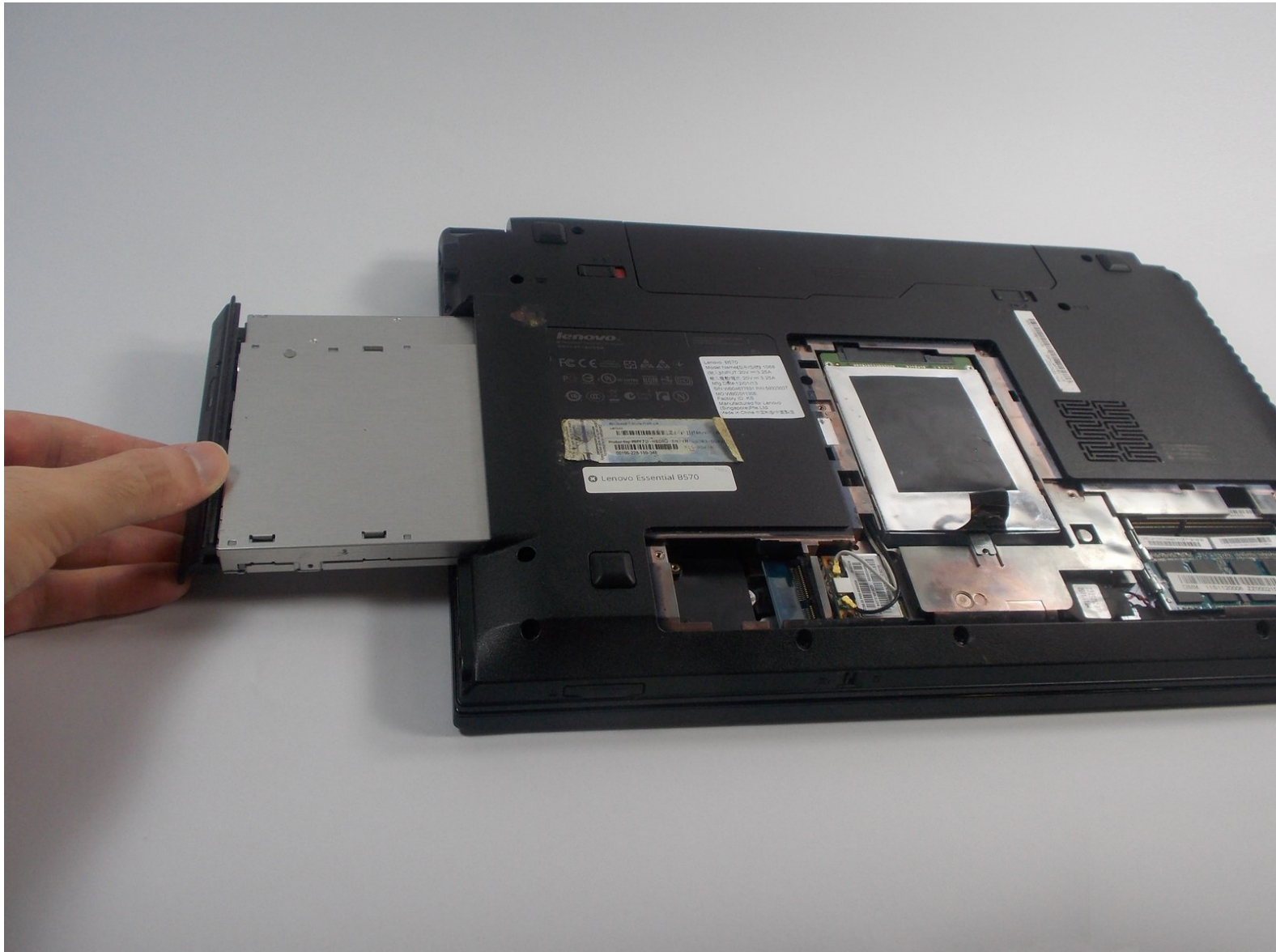




Lenovo Essential B570 DVD Drive Replacement

Use this guide to remove the DVD Drive.

Written By: Samuel Fillettaz



INTRODUCTION

Replacing the DVD drive is easy to do. Before attempting to remove the DVD drive, remove the battery to avoid damaging the laptop.

TOOLS:

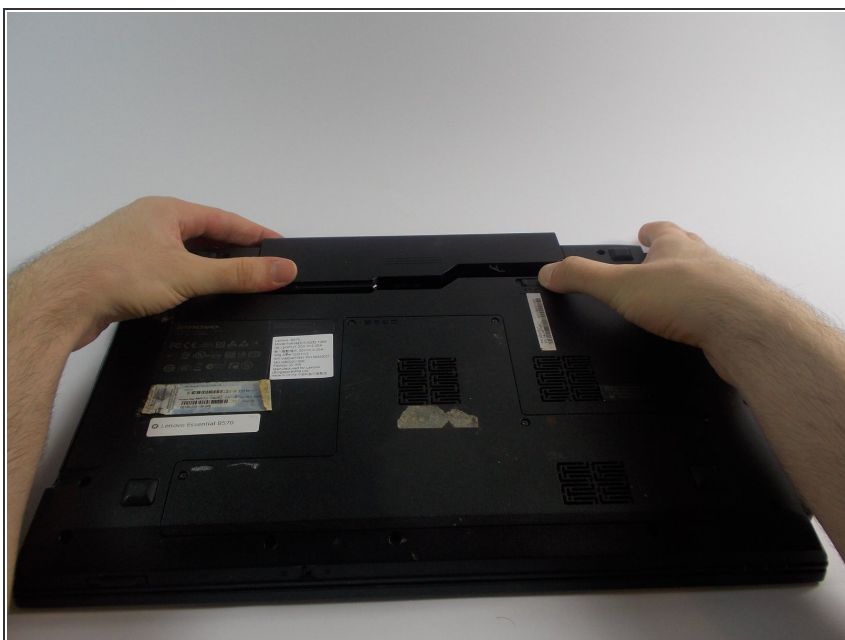
- [iFixit Opening Tools](#) (1)
 - [64 Bit Driver Kit](#) (1)
-

Step 1 — Battery



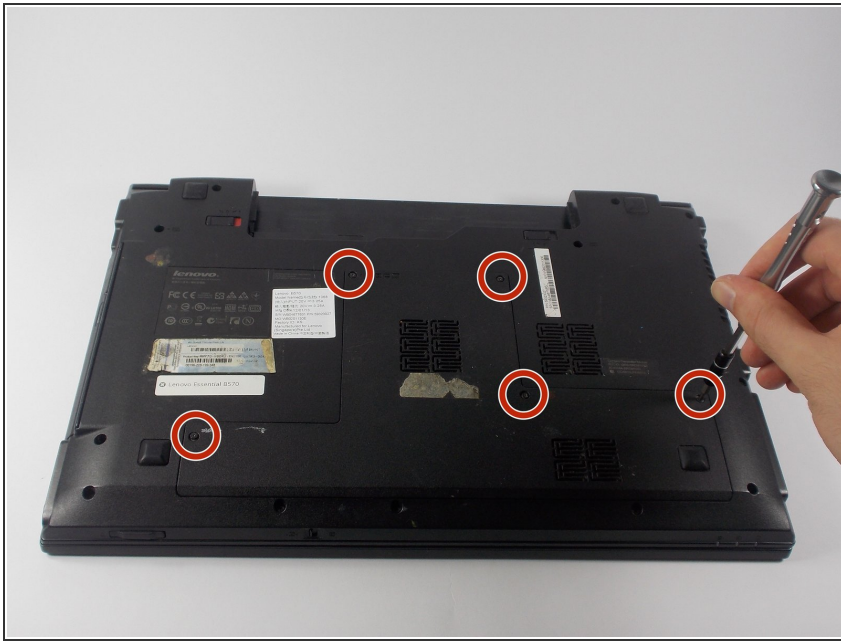
- Turn over laptop.
- Switch open the left battery lock.
- ⓘ If you are replacing inner components of the laptop, it is recommended to remove the battery first to avoid damage to the laptop.

Step 2



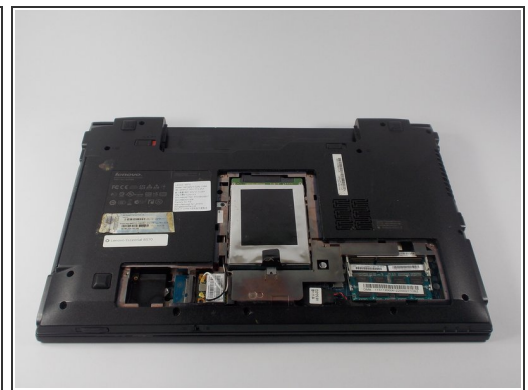
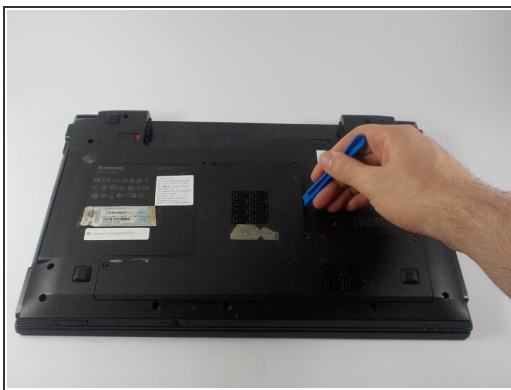
- Hold the right battery lock open with one hand while removing the battery itself with the other.

Step 3 — Back Panel



- Loosen the five Philips screws that secure the panel.
- ⓘ The screws do not actually fully remove from the panel. Loosening them as much as you can will be enough to disconnect them from the laptop.

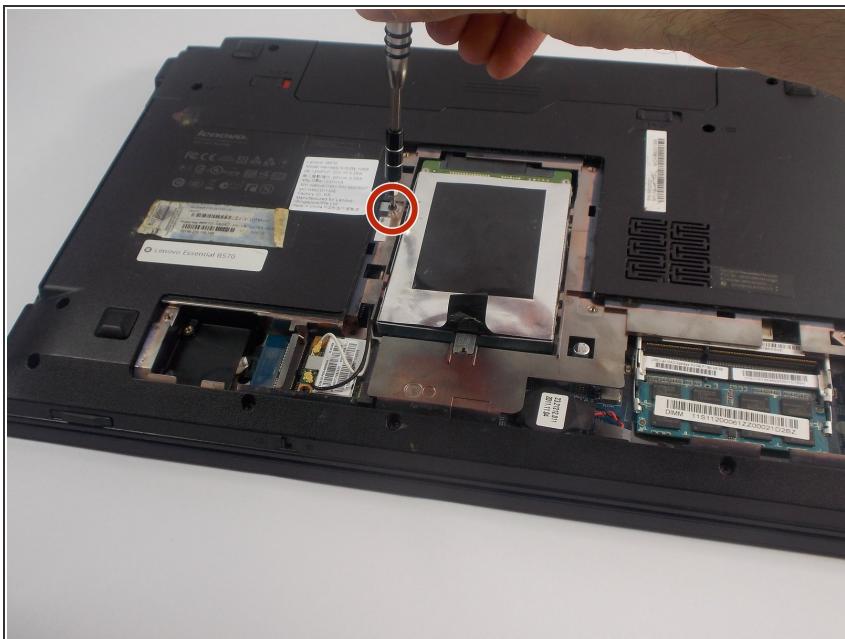
Step 4



- Prop open the cover with a plastic opening tool.

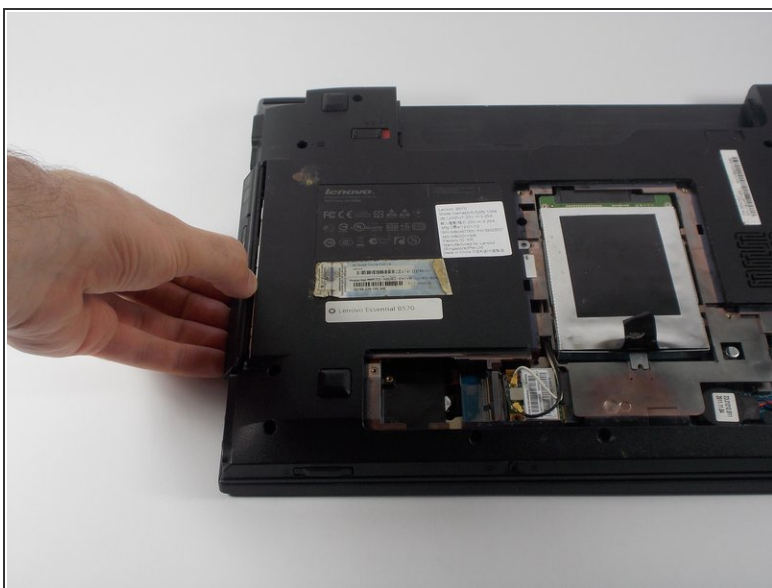
⚠ If the cover does not come off easily, do not force it. Make sure all screws are loosened.

Step 5 — DVD Drive



- Unscrew the one 4 mm Phillips screw that is securing your DVD drive to the frame.

Step 6



- Grab your DVD drive and pull outwards.

To reassemble your device, follow these instructions in reverse order.