



# Lenovo Essential B570 Hard Drive Replacement

Use this guide to remove the Hard Drive

Written By: Samuel Fillettaz



# INTRODUCTION

This guide will show how to be able to identify and remove your Hard Drive using common tools.

---

## TOOLS:

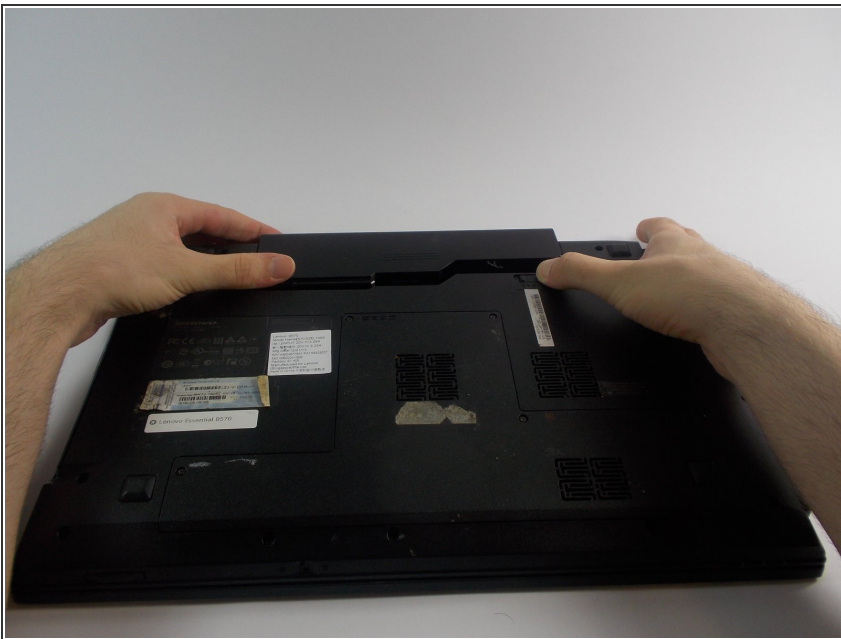
- [iFixit Opening Tools](#) (1)
  - [Phillips #1 Screwdriver](#) (1)
  - [64 Bit Driver Kit](#) (1)
-

## Step 1 — Battery



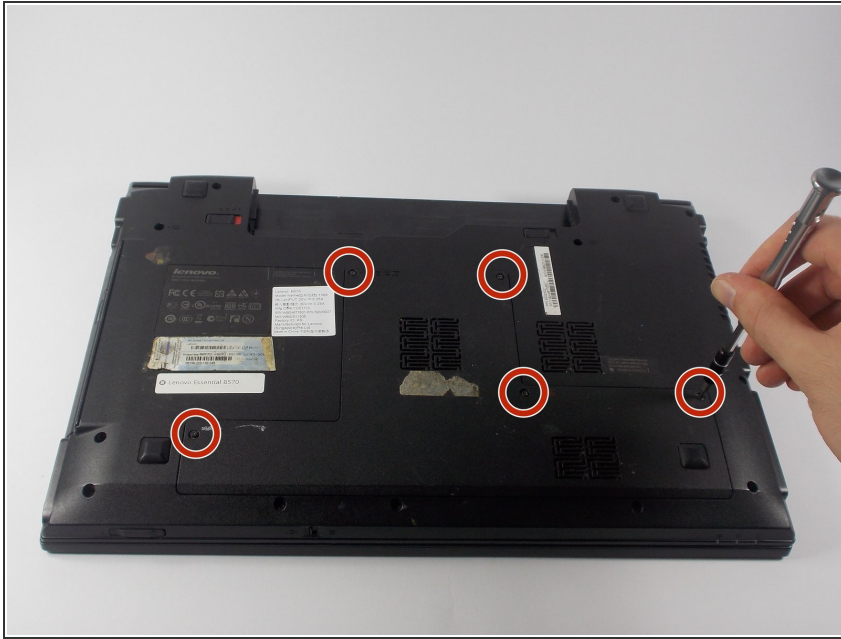
- Turn over laptop.
- Switch open the left battery lock.
- ⓘ If you are replacing inner components of the laptop, it is recommended to remove the battery first to avoid damage to the laptop.

## Step 2



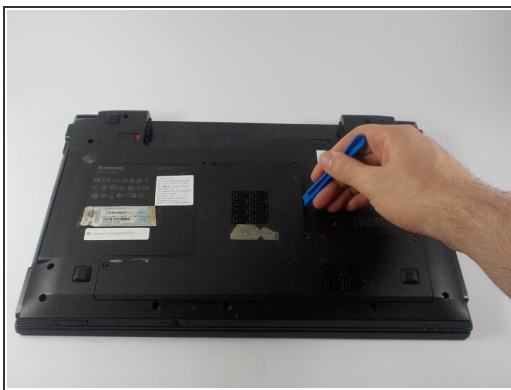
- Hold the right battery lock open with one hand while removing the battery itself with the other.

## Step 3 — Back Panel



- Loosen the five Philips screws that secure the panel.
- ⓘ The screws do not actually fully remove from the panel. Loosening them as much as you can will be enough to disconnect them from the laptop.

## Step 4

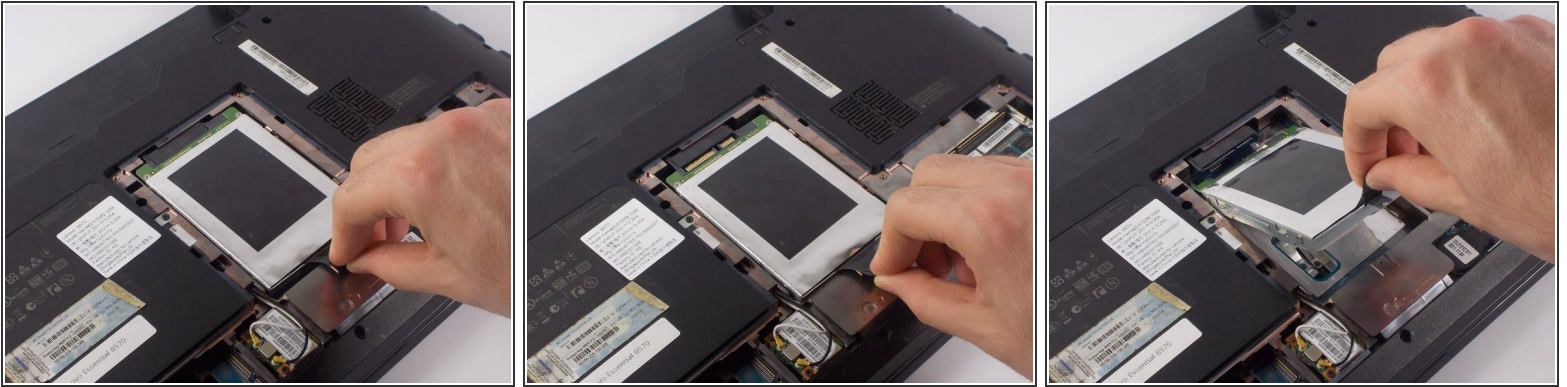


- Prop open the cover with a plastic opening tool.

⚠ If the cover does not come off easily, do not force it. Make sure all screws are loosened.



## Step 5 — Hard Drive



- Pull the Hard Drive out of its socket.
  - Lift the tab upwards to remove the hard drive.
- i** If you cannot pull the hard drive out of its socket, there is a possibility that there is a 4mm Phillips #1 screw securing it. Locate it and remove it before continuing. It is in very close proximity to the black tab.

To reassemble your device, follow these instructions in reverse order.