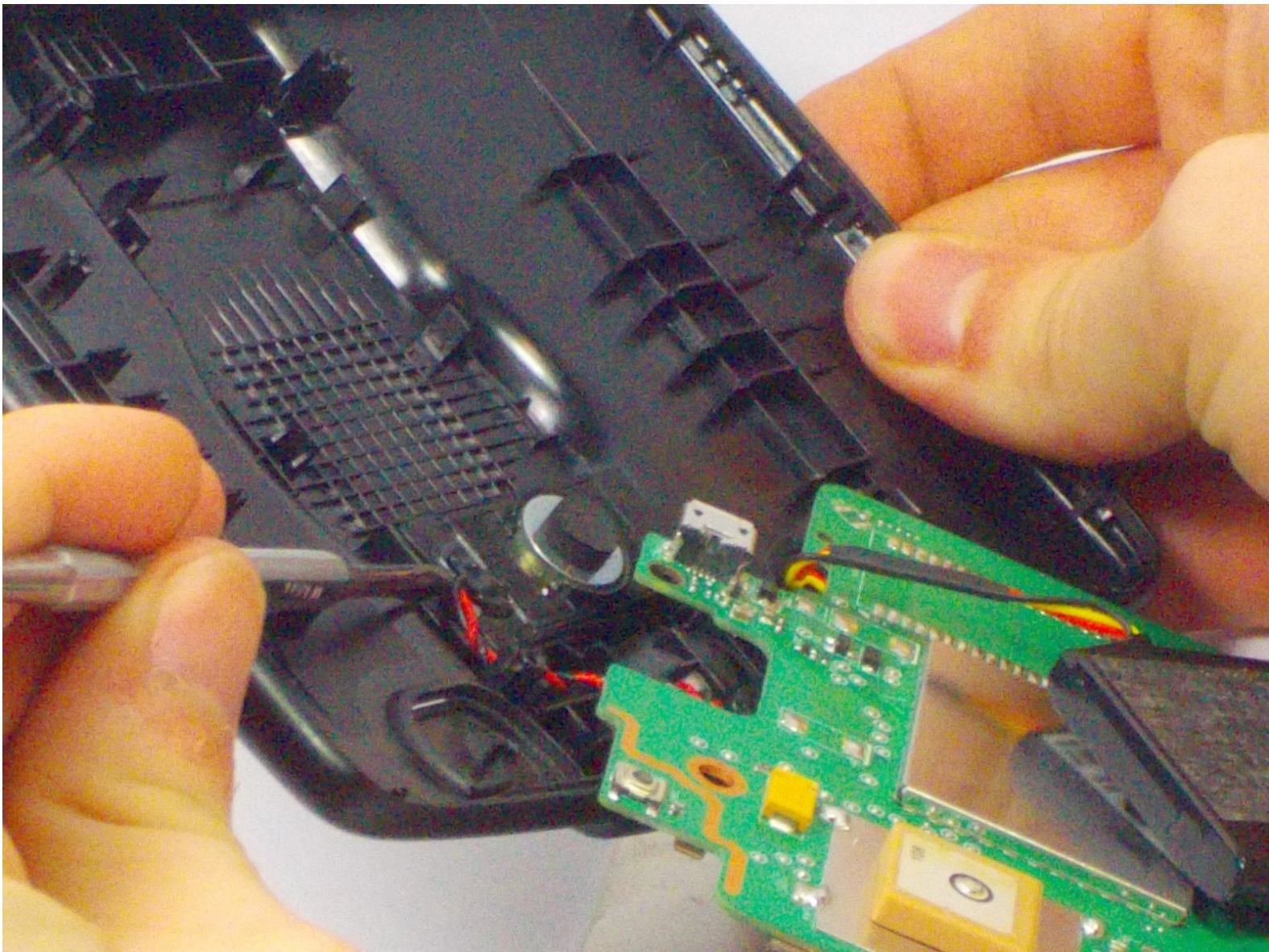




# TomTom VIA 1605TM Speaker Replacement

If your TomTom VIA 1605TM speaker does not work anymore it will be difficult to navigate. Follow this guide to replace it!

Written By: Kevin MacAllister



## INTRODUCTION

The TomTom VIA 1605TM, along with all GPSs, needs a sound function for when the user can't take his/her eyes off the road to get directions. This guide will help replace that. When prying do not use metal tools as this can cause static damage. Avoid direct contact on the pad of the speaker as this could damage it. The device can be identified by its model number which is located under the small panel on the bottom of the device.



### TOOLS:

- [Spudger](#) (1)
- [iFixit Opening Tools](#) (1)
- [JIS #1](#) (1)



### PARTS:

- [Speaker](#) (1)

## Step 1 — Front Screen



- Locate the round suction cup on the back of the device.
  - Twist the suction cup clockwise or counterclockwise while pulling back away from the device closer to your body until removed.
- ☒ When reassembling twist the suction cup but, push in as oppose to pulling out.

## Step 2



- Location of screw is where the suction cup was.
  - Insert 8mm Hex #T6 screw driver into screw.
  - Unscrew in counter clockwise direction.
- ☒ When reassembling screw in the clockwise direction.



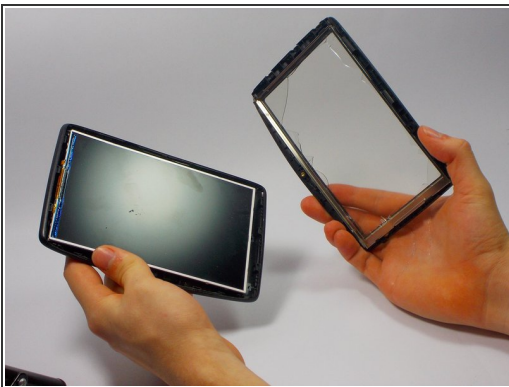
### Step 3



- Pry along the edges with the plastic opening tool to separate the back and front panel.

⚠ Try not to tear the screen open as you may break the part. Go about this gently but with enough force to remove the screen.

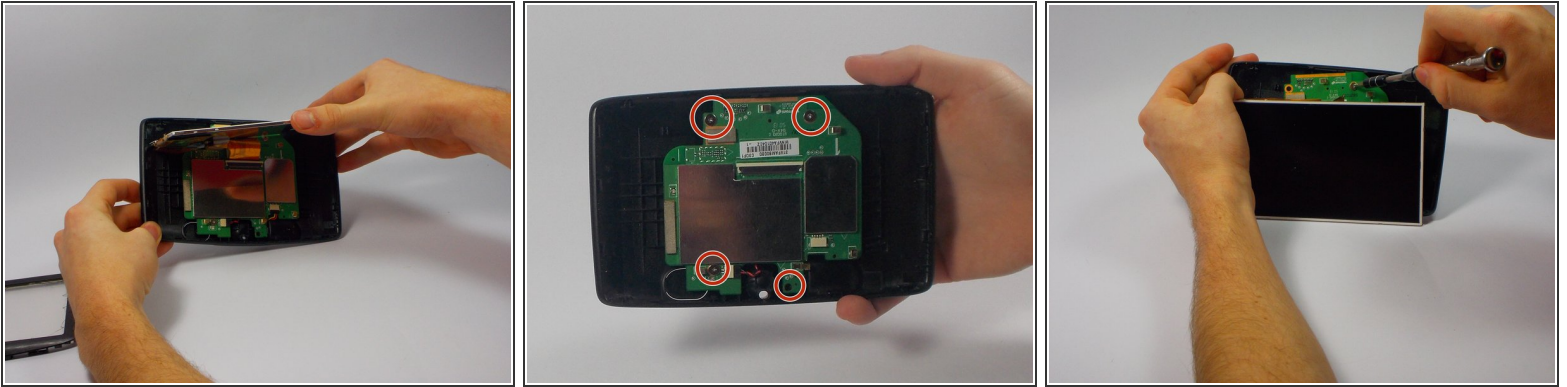
### Step 4



- Place the new front panel (with new screen) on to the back panel. Press firmly along the edges to attach.

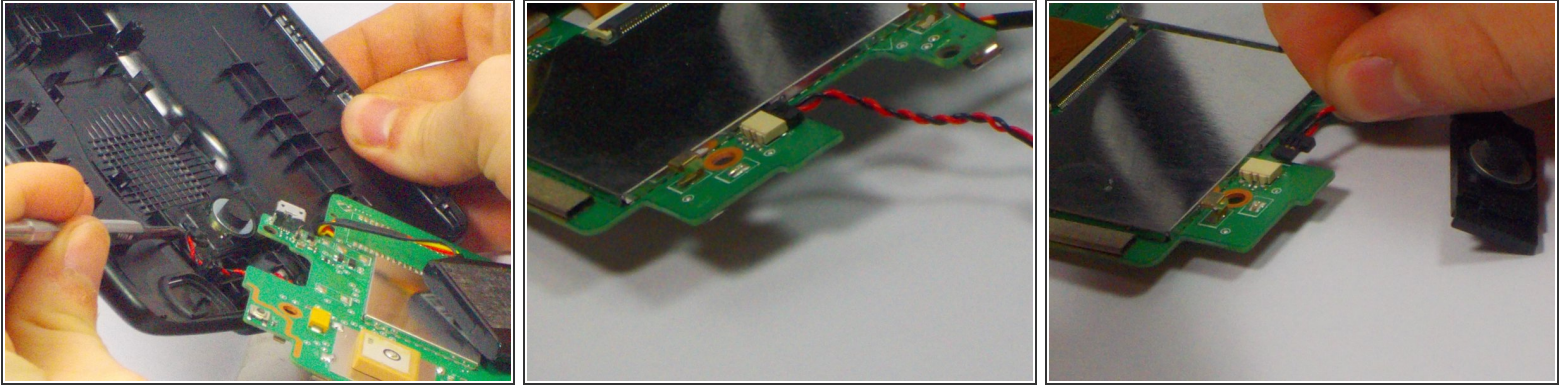
☑ Only do this step of placing the front panel on if you are completed. If there are still components needed replacing postpone this step until the end.

## Step 5 — Speaker



- Keep the TOMTOM oriented so the curve is on the bottom. Locate the four 1mm Philips #J1 head screws attached to the motherboard behind the LCD Screen.
- Unscrew each of these in a counter clockwise direction.
- ☑ When reassembling screw back in a clockwise direction.
- ⓘ The second picture is to represent where the four screws are located. The LCD screen does not disconnect from the motherboard in this particular guide.

## Step 6



- Remove speaker from slot on back panel by prying out of the rubber/plastic case with the plastic opening tool. If this does not work the metal spudger is okay for this step.
  - Remove the existing speaker from it's connection to the motherboard by pinching both sides of the connector.
  - Pull back away (in the opposite direction) from the connector.
- ☒ When reassembling push back into connector. Do not need to pinch anything. The "click" sound insures solid connection.

To reassemble your device, follow these instructions in reverse order.