



# Magellan RoadMate 5265T-LMB Battery Replacement

This guide will describe how to replace the battery in the Magellan RoadMate 5265T-LMB.

Written By: Shannon McKeown



---

## INTRODUCTION

This guide will show you how to remove the battery from the Magellan Roadmate 5265T-LMB. It is recommended to have some experience soldering before attempting this replacement. To remove the battery, the battery must be desoldered from the motherboard after separating the front and back device casing.



### TOOLS:

- [Magnetic Project Mat](#) (1)
  - [iFixit Opening Tools](#) (1)
  - [Soldering Iron](#) (1)
  - [Phillips #0 Screwdriver](#) (1)
  - [Spudger](#) (1)
-

## Step 1 — Battery



- Place the device on a flat surface with the screen facing down.
- Remove the screws on the four corners of the device with a phillips head, size 0 screwdriver.
- ⓘ Be sure to keep track of where you place the screws. A magnetic project mat works great for this.



## Step 2



- Using the plastic opening tool, gently pry apart the front and back casing panels around the edges of the device. While doing this the clips will gently be pried apart allowing you to separate the front and back casings.
- There is a ribbon cable that will still connect the front panel to the motherboard.

## Step 3



- The ribbon cable is attached to the motherboard by a ZIF (Zero Insertion Force) connector.
- Using the nylon or metal spudger, gently pop up the ZIF connector tab and remove the ribbon cable. This will allow you to separate the front panel from the motherboard.
- Gently pull the front panel away and set it on your workstation.

This document was generated on 2020-11-14 04:30:33 PM (MST).

## Step 4



- Make sure the back panel is lying on a flat surface with the open side showing up.
- Using a plastic opening tool, gently lift the battery to break the adhesive which binds it to the back panel.

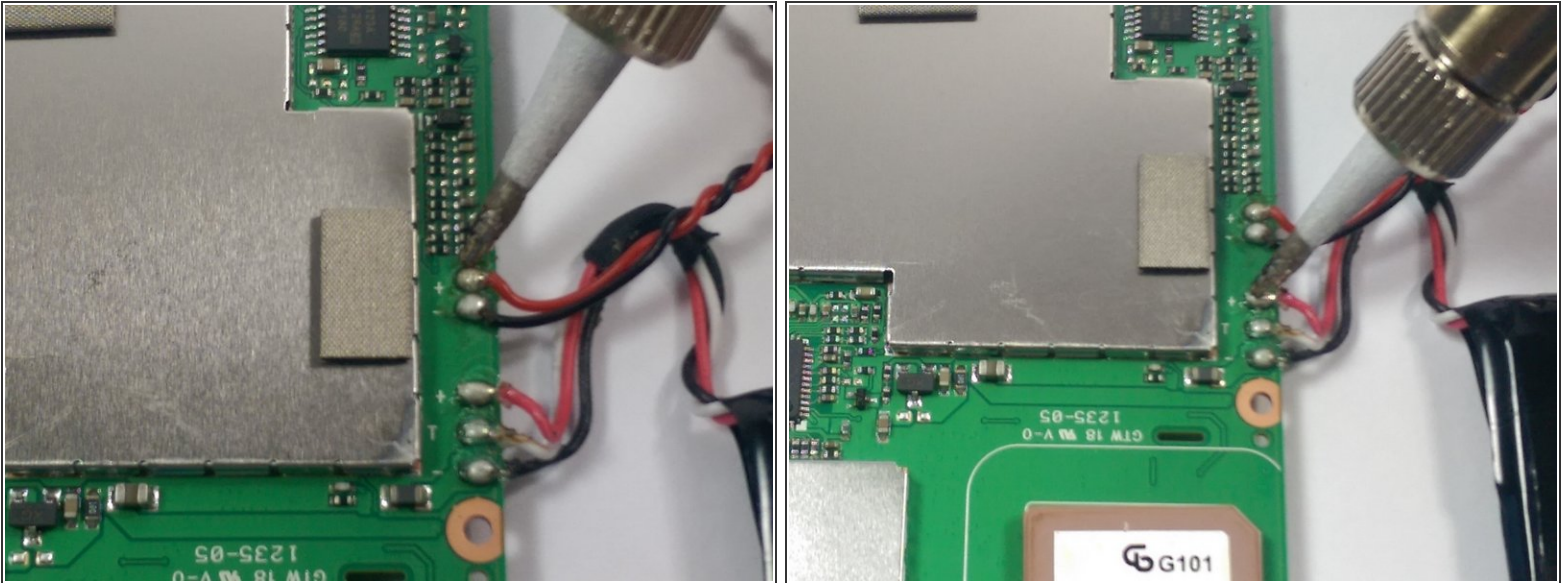
## Step 5



- Unscrew the three screws holding the motherboard and speakers in place. Use a size 0 phillips head screwdriver.
- Now you may remove the motherboard, speaker, and battery as one unit from the back panel itself.
- Flip over these components and gently place them down on your workstation, so that the back of the motherboard is revealed.



## Step 6



- i While inspecting the back of the motherboard, you will be able to see the three wires connecting it to the battery. All of these wires are soldered onto the motherboard itself so a soldering iron will be necessary to remove them.
- Using a soldering iron, carefully desolder all three wires allowing you to separate the battery from the motherboard.

To reassemble your device, follow these instructions in reverse order.