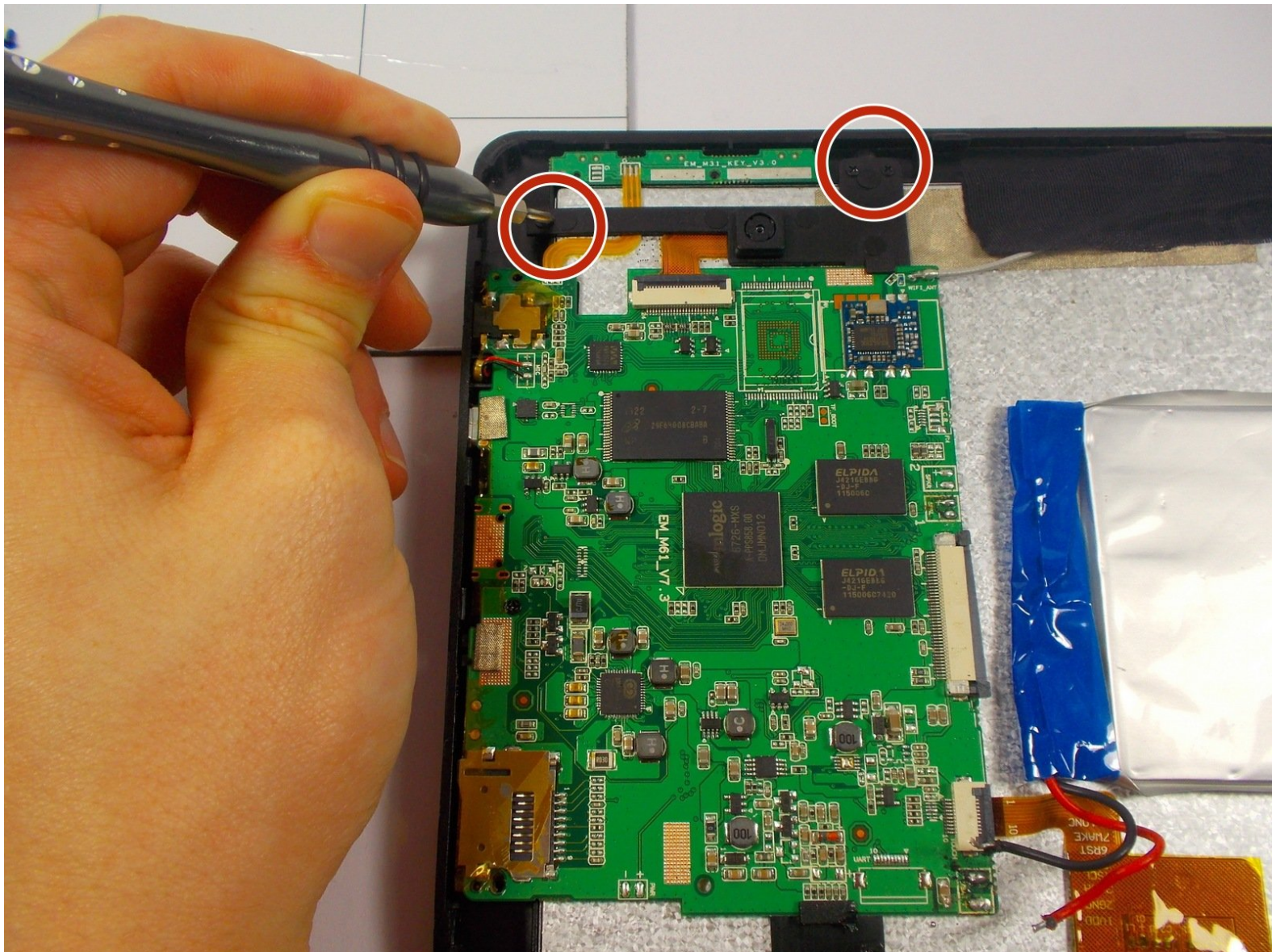




Trio Stealth-10 Front-Facing/Rear-Facing Camera Replacement

This guide will detail the steps to replace the front-facing and rear-facing camera on the Trio Stealth 10.

Written By: Daniel Coleman



This document was generated on 2020-11-24 09:52:27 PM (MST).

INTRODUCTION

If the front-facing or rear-facing camera on your Trio Stealth-10 is no longer functioning, replacement isn't difficult and this guide will give you the step by step procedure to do so.

TOOLS:

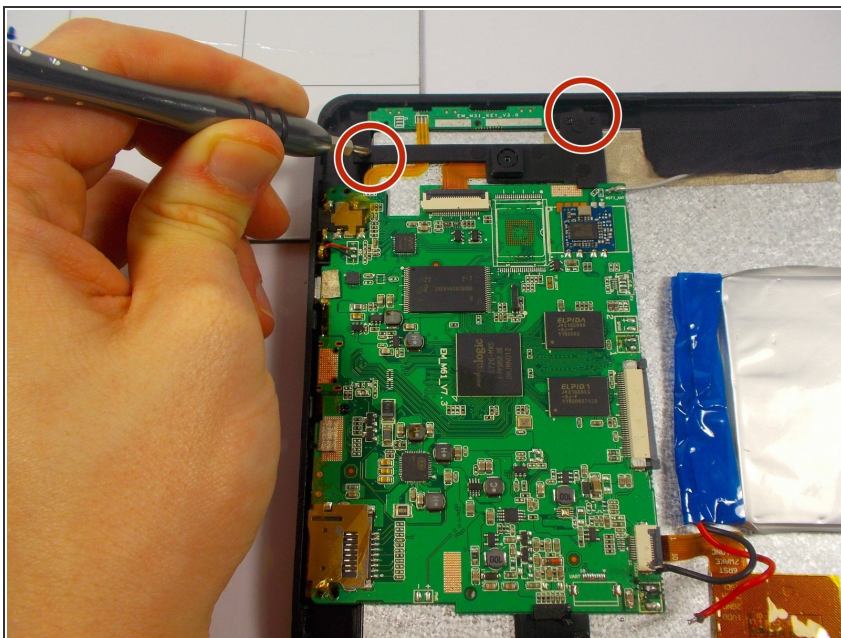
- [iFixit Opening Tools](#) (1)
 - [Spudger](#) (1)
-

Step 1 — Back Panel



- To remove the back panel, you will need to use a plastic opening tool and slowly separate the back panel from the device.

Step 2 — Front-Facing/ Rear-Facing Camera



- Next use your PH 0 to remove the two 4mm screws to detach the camera support fixture.

Step 3



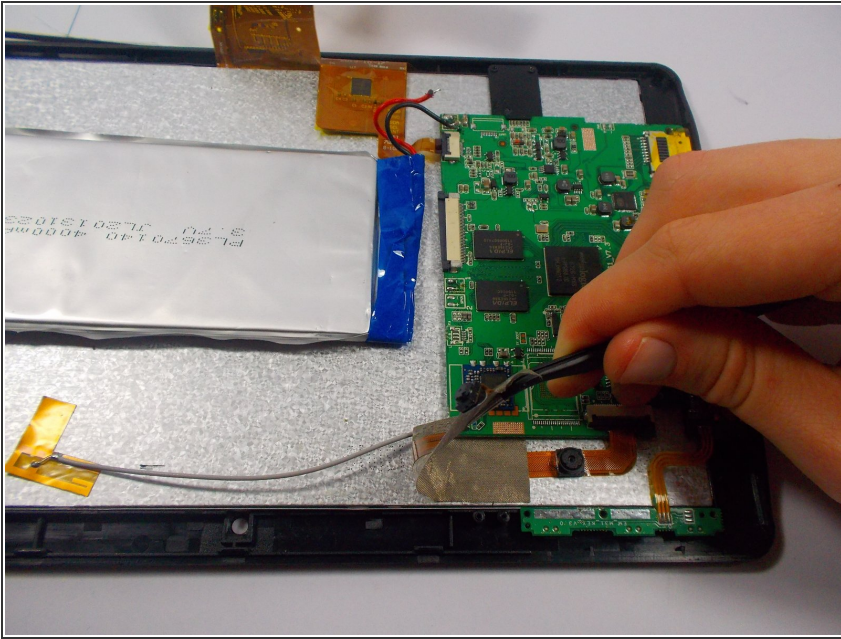
- Disconnect the camera from the mother board. Use a spudger and lift the grey latch until it is facing up then pull out the connection for the cameras.

Step 4



- Remove the first layer of tape above camera cable connection slowly.

Step 5



- Remove the second layer of tape above camera cable connection gently and remove the cameras from the device.

To reassemble your device, follow these instructions in reverse order.