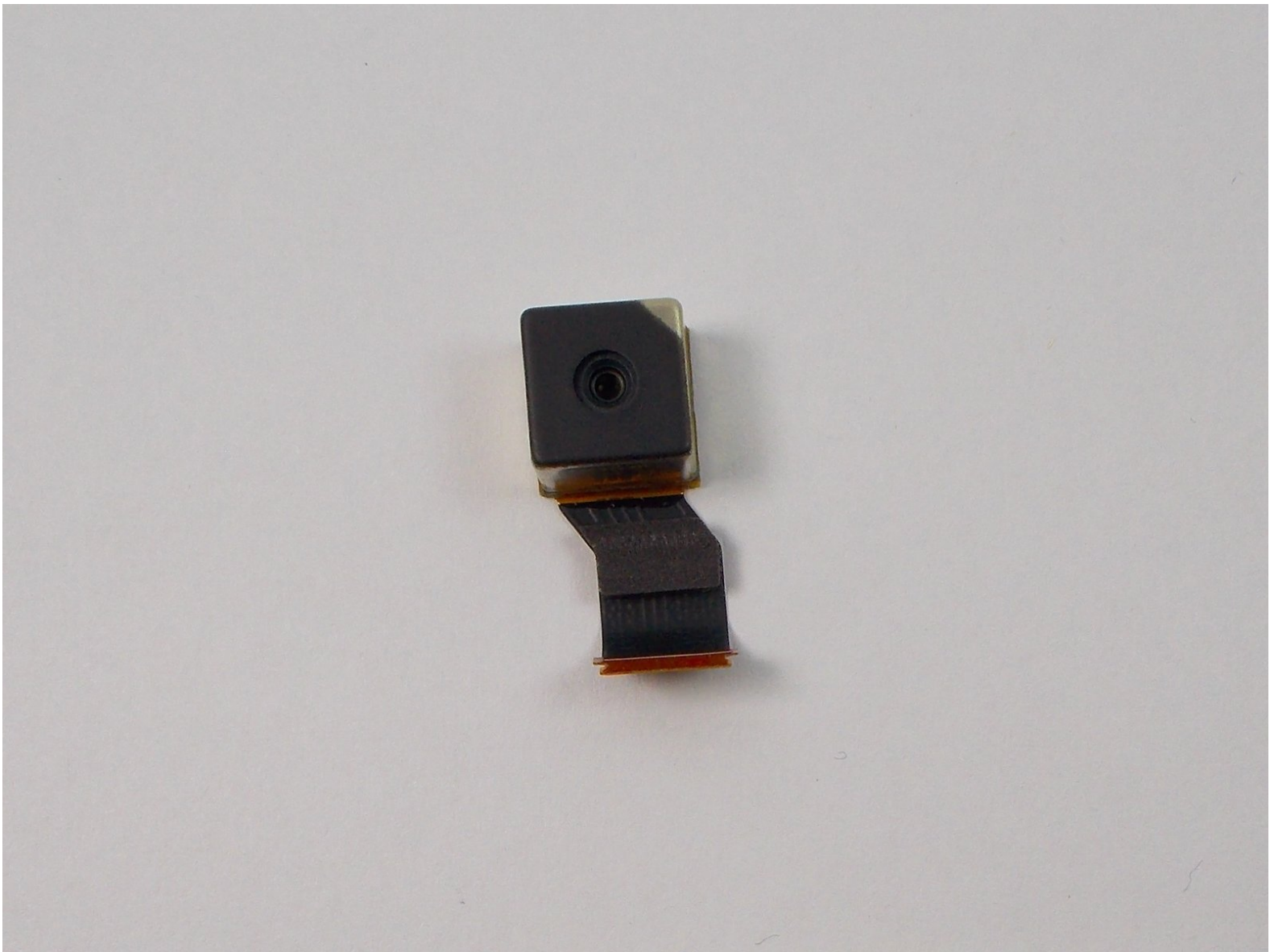




Motorola Droid Pro Camera Replacement

This guide will show you how to disassemble your device and get to the Camera so you can replace it.

Written By: Richard Bellizzi



INTRODUCTION

Before continuing make sure you power down your device and work in a clean area. Also wear a static band to prevent damages to your device.



TOOLS:

- [Anti-Static Wrist Strap](#) (1)
- [iFixit Opening Tools](#) (1)
- [T4 Torx Screwdriver](#) (1)
- [T5 Torx Screwdriver](#) (1)
- [Thumbnail](#) (1)



PARTS:

- [Droid Pro Camera](#) (1)

Step 1 — Battery



- Remove the back cover using the thumb tab located on the bottom of the phone.

Step 2



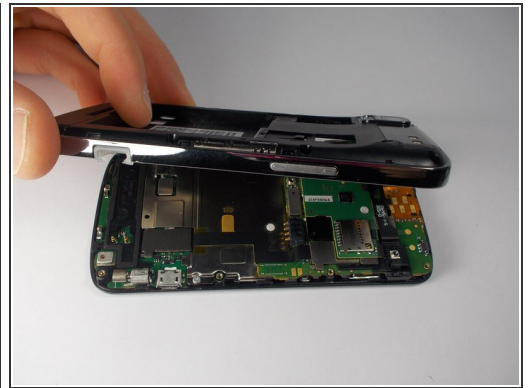
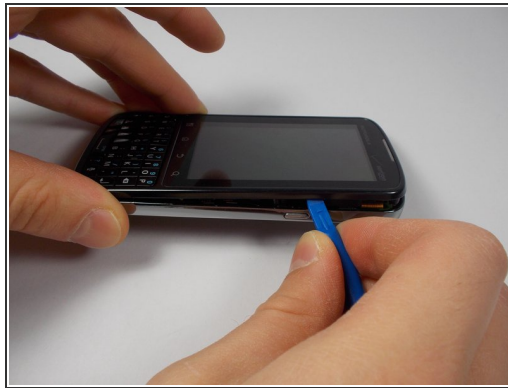
- Remove the battery using the thumb tab.

Step 3 — SD Card/SIM Card PCB Board



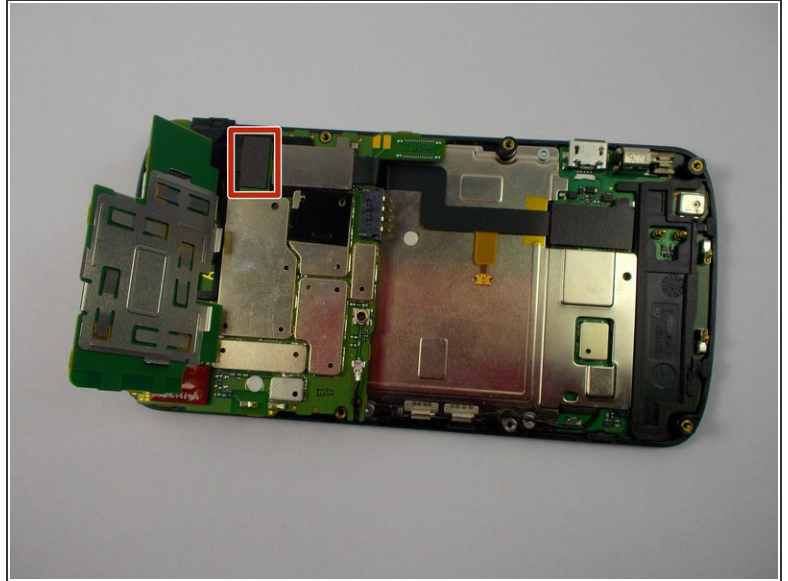
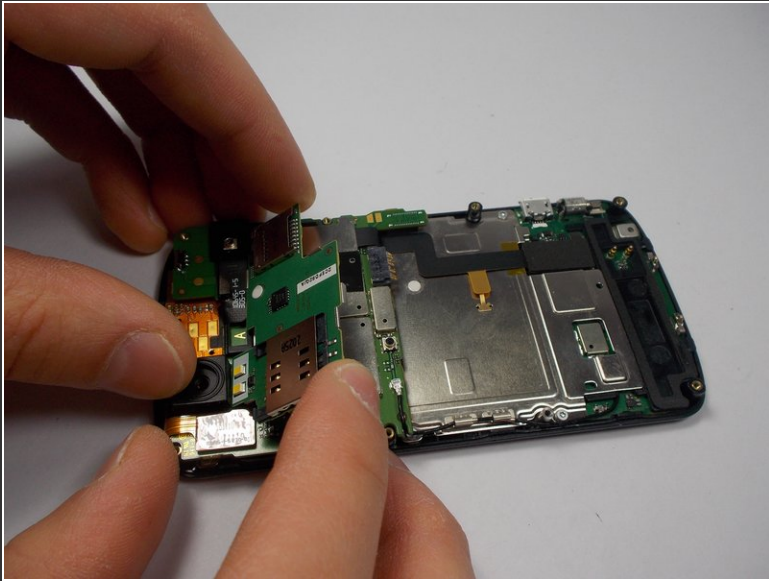
- Using a T4 Torx driver, remove the eight 4 mm back panel screws.

Step 4



- Use a plastic opening tool to open the phone along the sides between the front panel and the chrome trim.
- ⓘ It is held together by small clips that lock in. You may have to use extra force to unlock them.
- Go around on all sides of the phone, unlocking the clips. Then pull the back panel off.

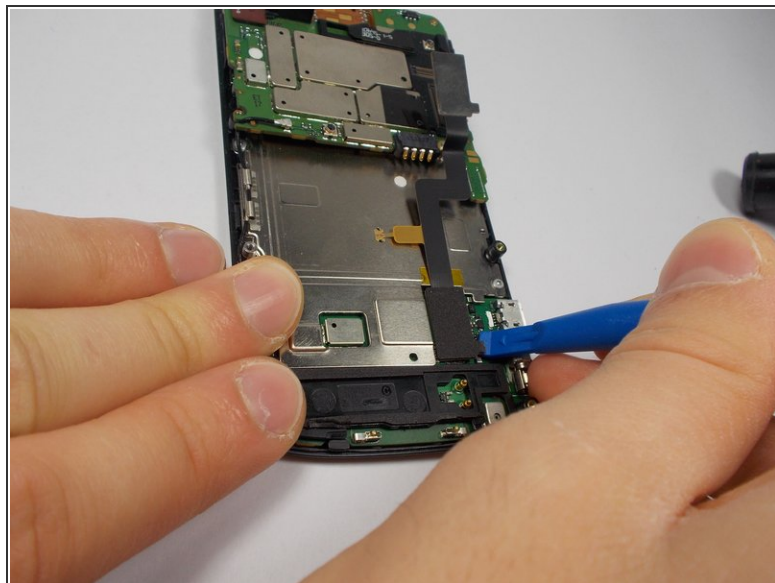
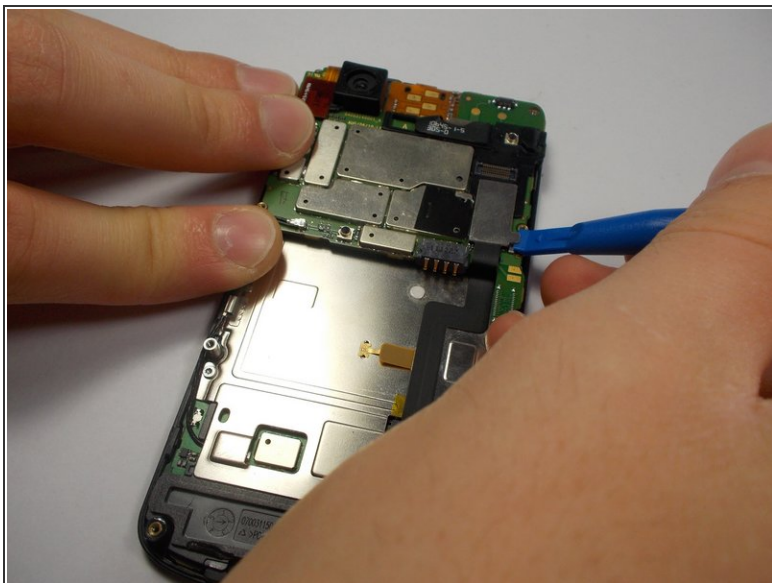
Step 5



- Gently lift the SD & SIM card board (PCB) as shown.

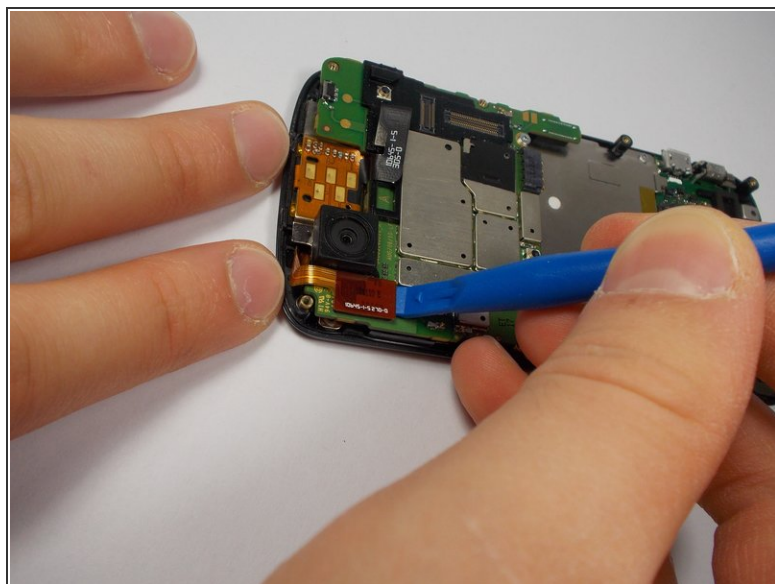
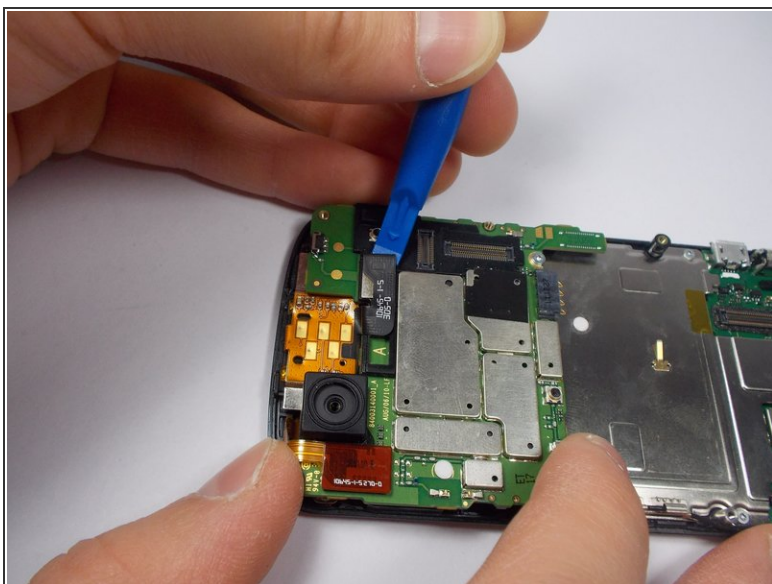
⚠ There is a ribbon cable attached underneath. Gently pull the PCB board away from the phone and it will detach easily.

Step 6 — Motherboard



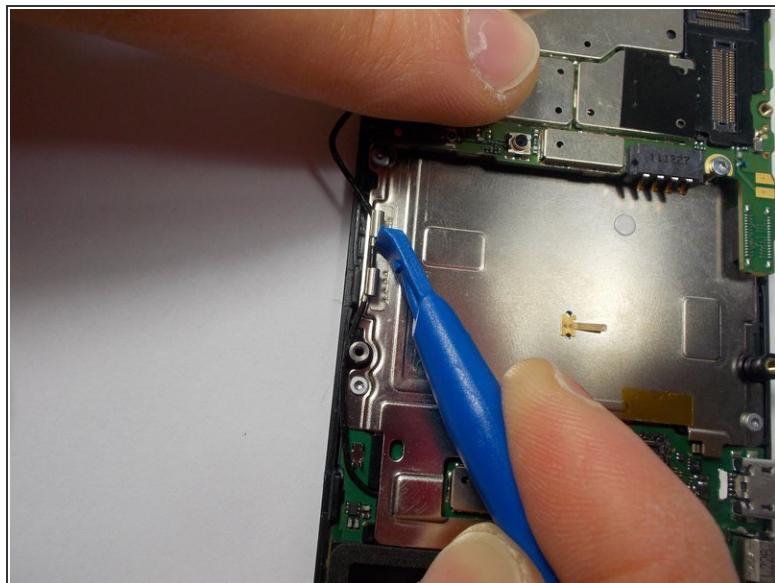
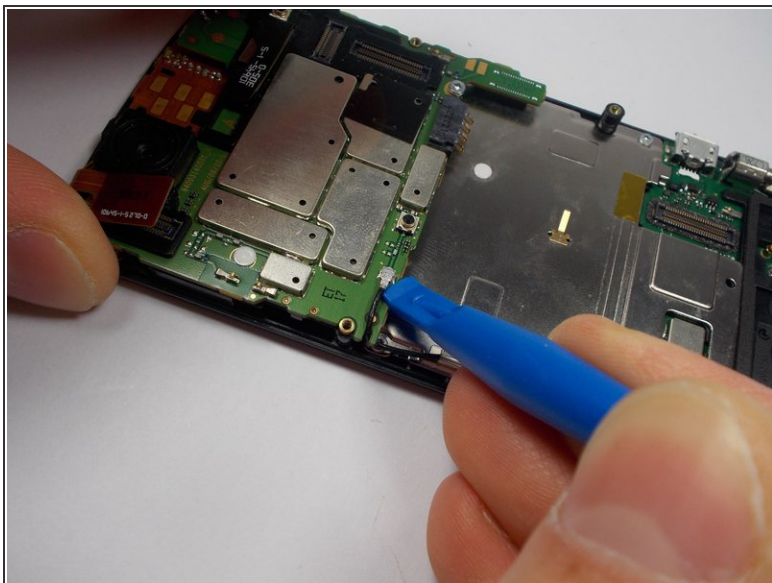
- Use your plastic opening tool to disconnect the motherboard/keyboard ribbon cable.
- ⓘ There are small tabs on the side of the connectors to wedge your tool under.

Step 7



- Use your plastic opening tool to disconnect the two ribbon cables at the top of the phone.

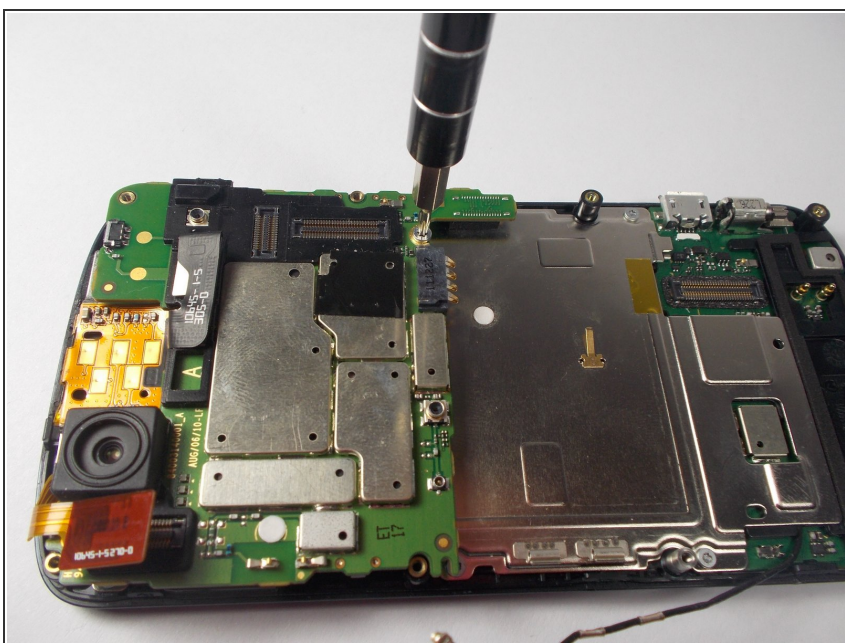
Step 8



- Disconnect the 2nd keyboard connector from the motherboard and remove it from its side holders.

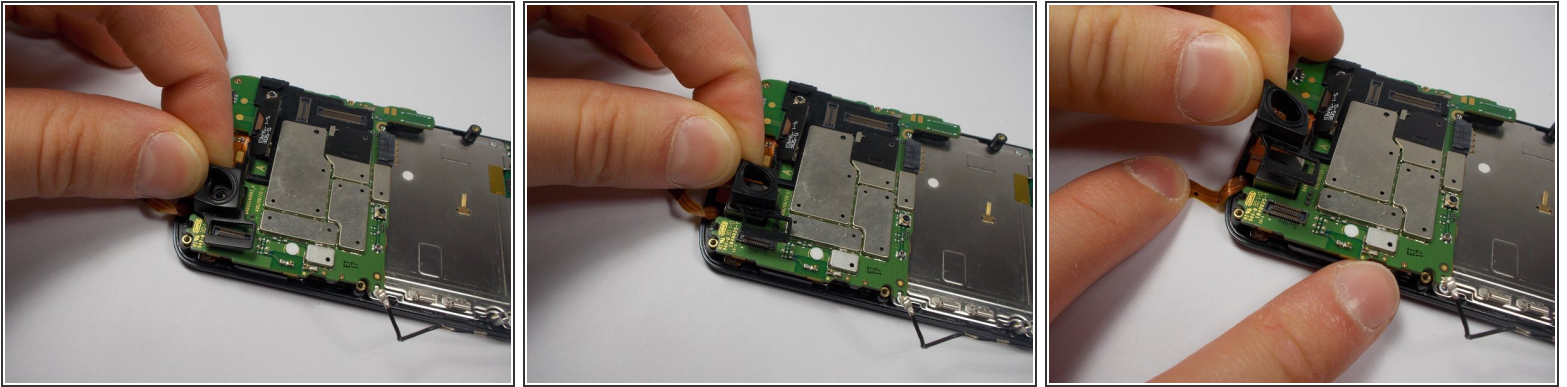
⚠ This cable is fragile so be careful when disconnecting and moving it around.

Step 9



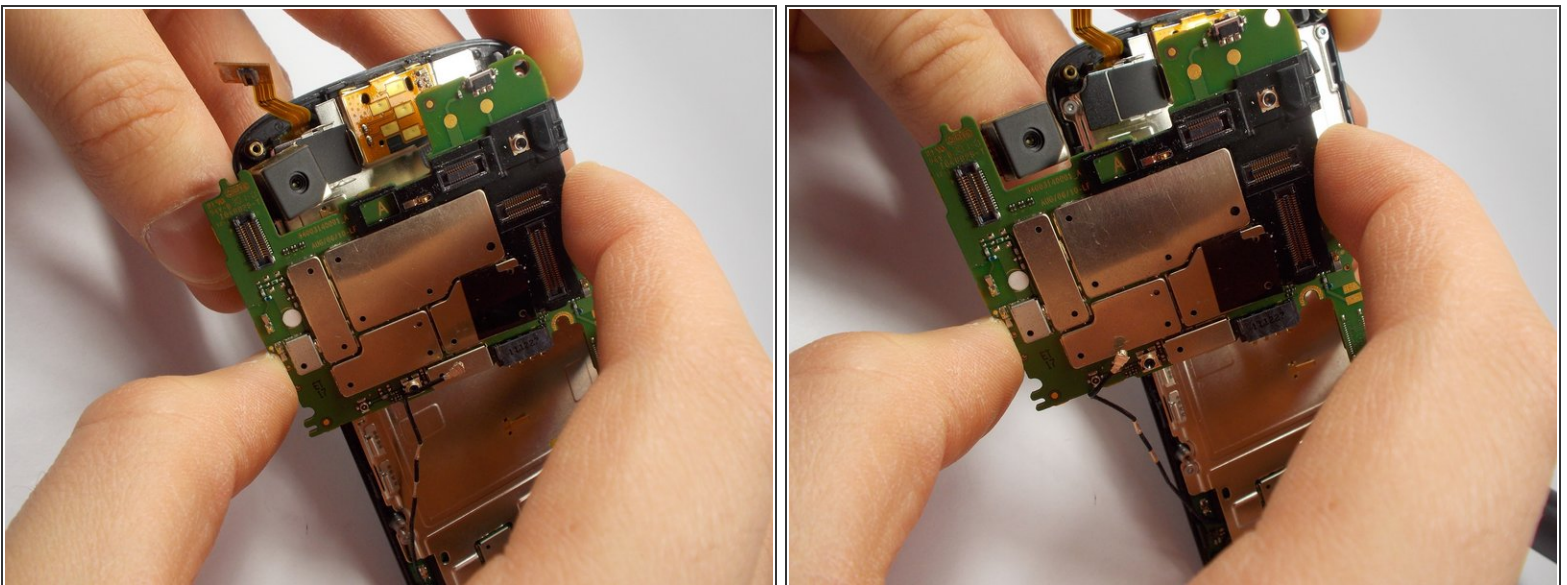
- Use a T5 Torx Screwdriver to unscrew the 2mm screw.

Step 10



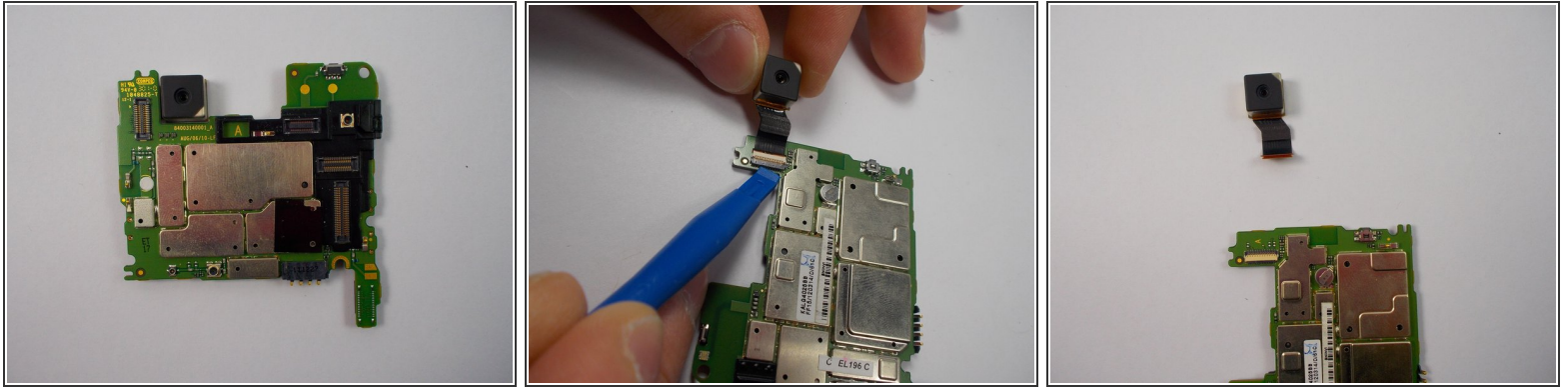
- Remove the camera's rubber seal by pulling it off. It is not connected to anything.


Step 11




- To remove the motherboard, pull it to the side. The camera that is connected to the motherboard does not pull straight up and out from its holder.

Step 12 — Camera



 The camera is located on the back side of PCB board.

- Flip the board over and you will see that the camera is connected by a ribbon cable.
- Unlock the cable by using a plastic remover tool then pull the camera out.
- Insert the new camera and re lock the ribbon cable.

 Do not use excessive force and make sure the cameras ribbon cable gets properly re seated.

To reassemble your device, follow these instructions in reverse order.