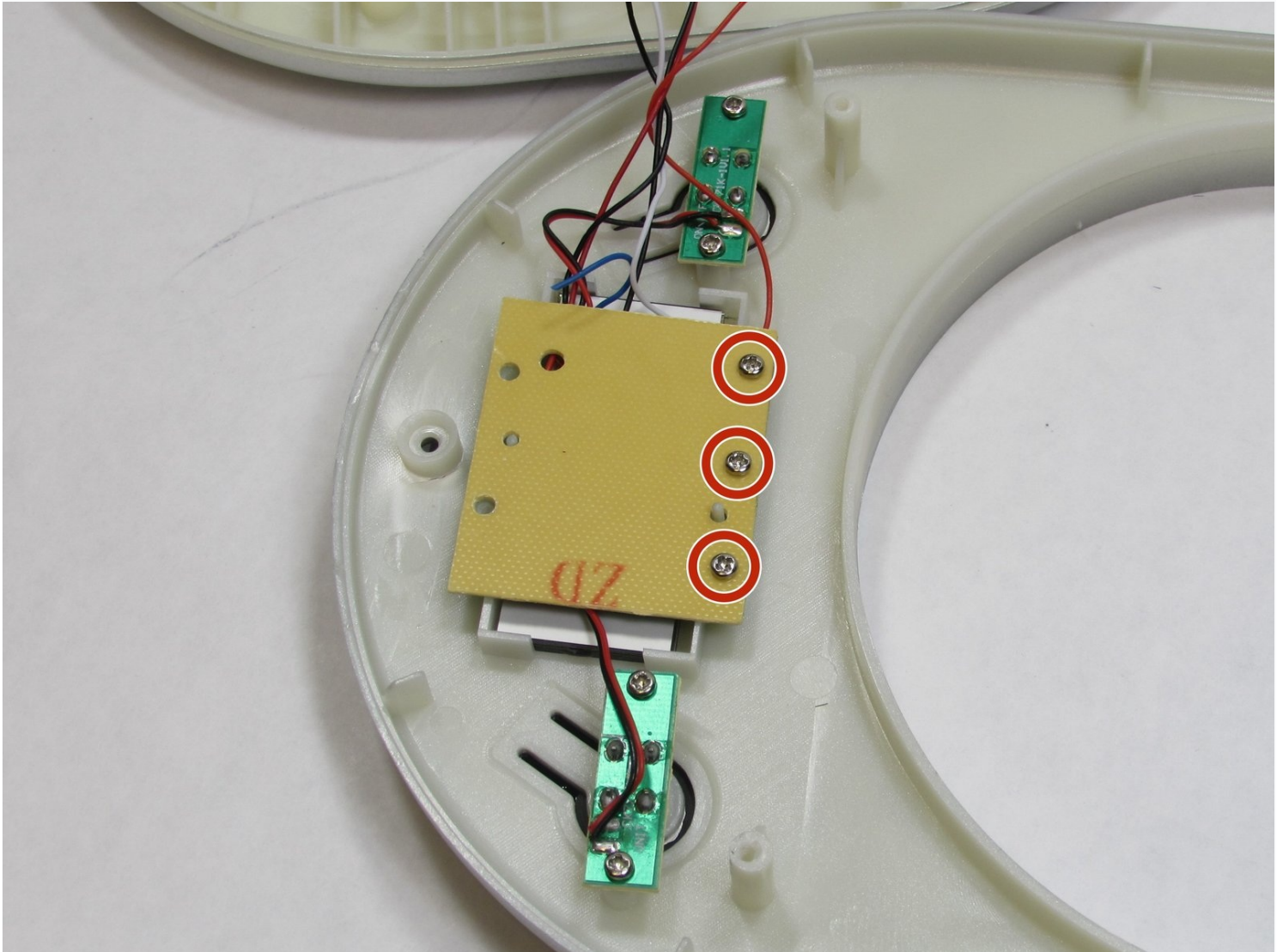




Ozeri Pronto ZK14-S LCD Replacement

This guide explains how to expose the LCD...

Written By: Oneika White



INTRODUCTION

This guide explains how to expose the LCD screen of the Ozeri Pronto ZK14-S. The detachment of the LCD motherboard is necessary to reveal the actual screen.

TOOLS:

[2.0 Flathead screwdriver](#) (1)

Step 1 — Panel Removal



- Twist the plastic plate slowly to the left to pull it away.

Step 2



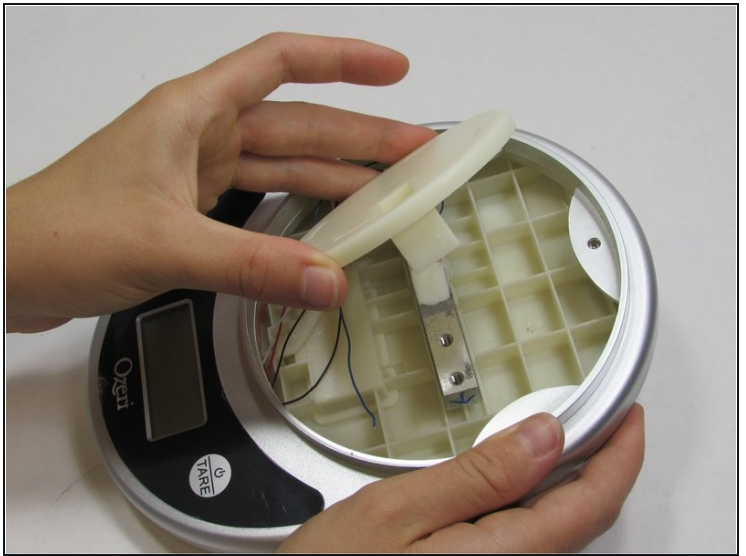
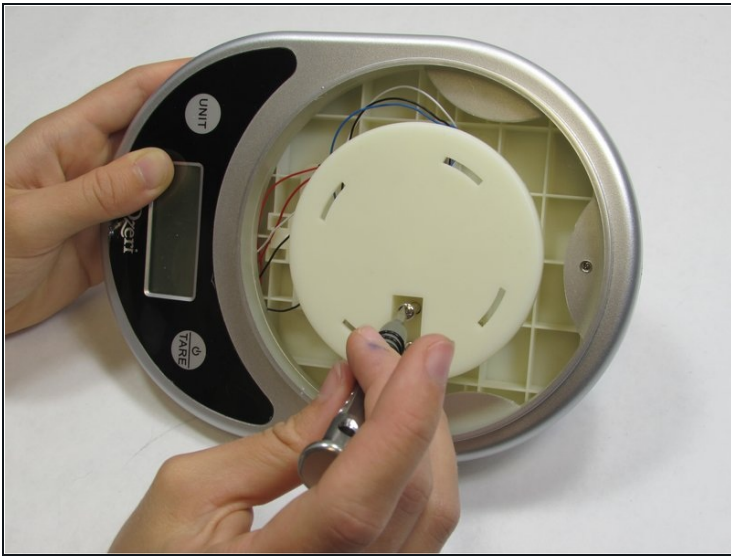
- Lift up the sticker at the bottom where the “Ozeri” logo is to reveal a screw.
- ⓘ The sticker does not need to be completely removed.

Step 3



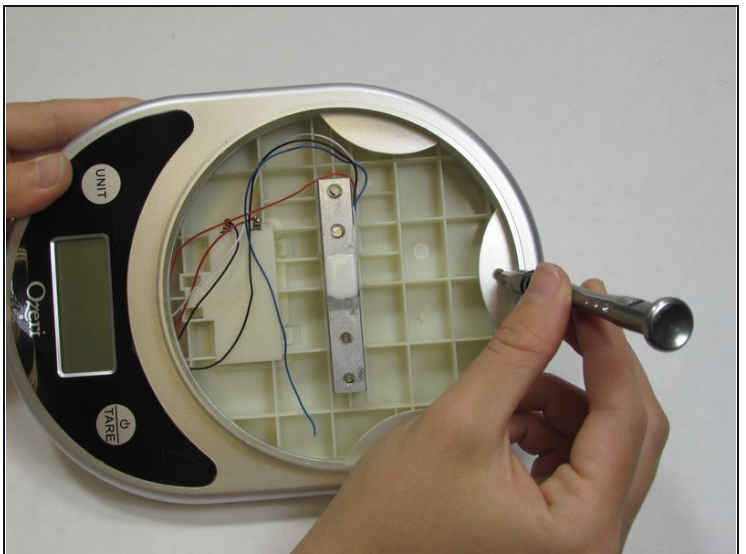
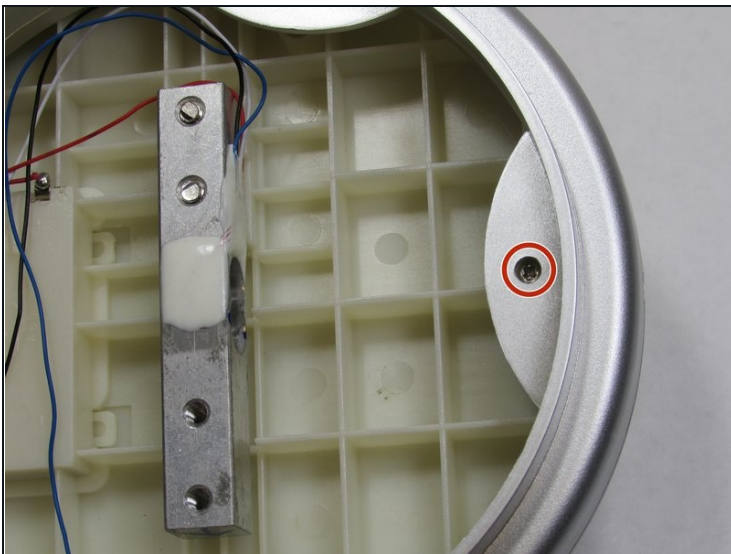
- Using a 2.0 Flathead screwdriver, remove the 9.50 mm Phillips head screw under the sticker.

Step 4



- Using a 2.0 Flathead screwdriver, remove the two 18.76 mm Phillips head screws in the plate stand.

Step 5



- Using a 2.0 Flathead screwdriver, remove the 9.44 mm Phillips head screw on the edge opposite to the LCD screen.

Step 6



- Turn the device over so the back panel is facing up.

Step 7



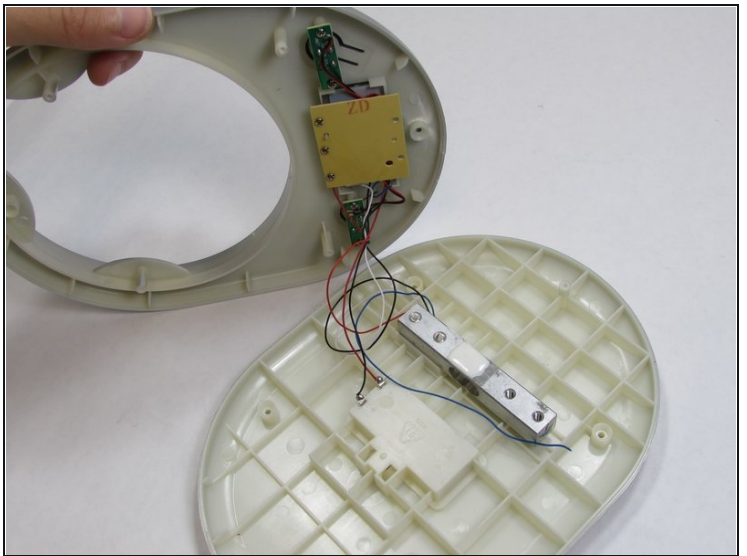
- Using the iFixit opening tool, pry off the two rubber stubs on the right side and the two rubber stubs on the left side of the bottom of the device.

Step 8



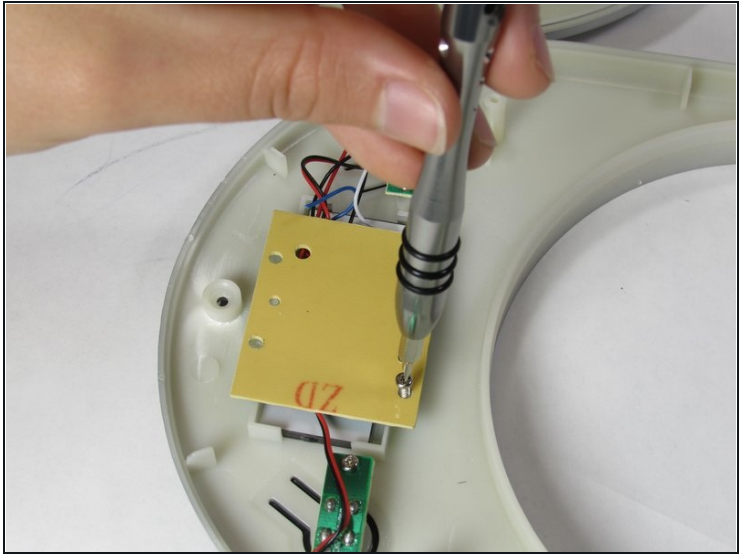
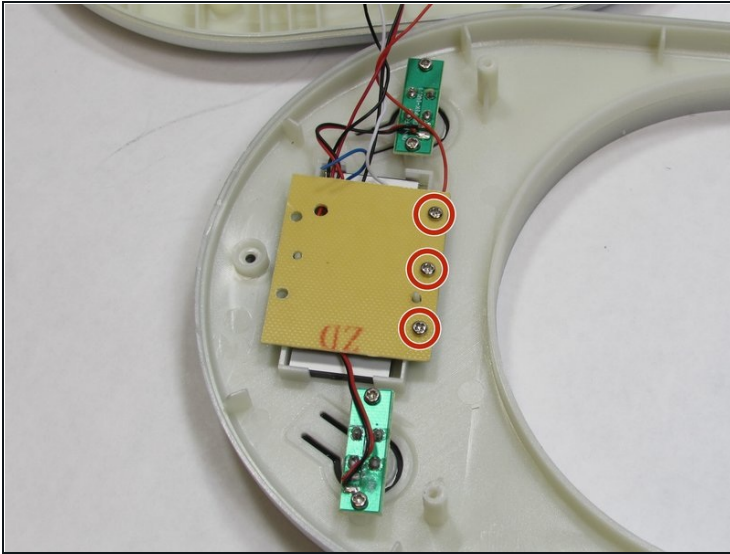
- Using a 2.0 Flathead screwdriver, remove the four 9.46 mm Phillips head screws that were under the rubber stubs.

Step 9



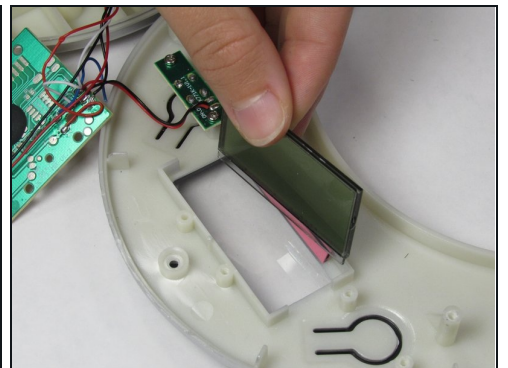
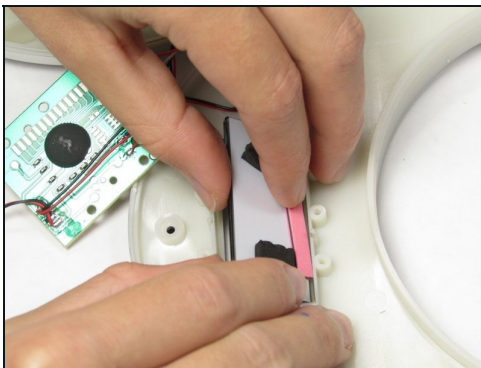
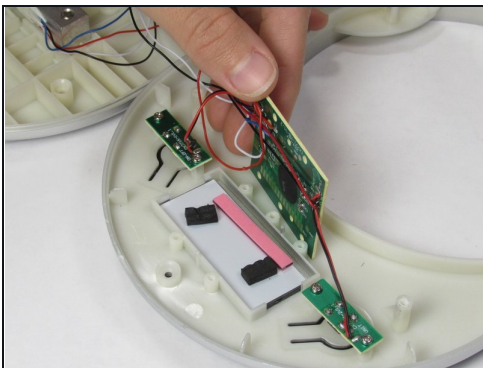
- Pry apart the two panels to separate them from each other.
- Flip the device over so the LCD is facing up. Flip the front panel over on its side.
⚠ Be careful when separating the panels to avoid damaging the wires they are connected by.

Step 10 — LCD



- Using the [2.0 Flathead](#) screwdriver, remove the three 7.20 mm screw on the back of the center LCD motherboard.

Step 11



- Stand the center motherboard up to expose the LCD screen
⚠ Be careful when standing up the LCD motherboard to avoid damaging the wires it is connected to.
- Remove the LCD screen.

To reassemble your device, follow these instructions in reverse order.