



LG G Pad 7.0 Display Assembly Replacement

In this guide you will be taken through a step...

Written By: echow2001



INTRODUCTION

In this guide you will be taken through a step by step process on how to replace your display on your **LG G Pad 7.0**.

Replacing your display is a tricky procedure with you having to remove key components like a **mother board**, **charging port** and **connectors** inside your device, so don't forget to power down your device. You must be careful when removing the **7 inch glass display**.

Chances are your display is no longer operating properly or simply just cracked and in need of replacement. So carefully follow the steps properly.



TOOLS:

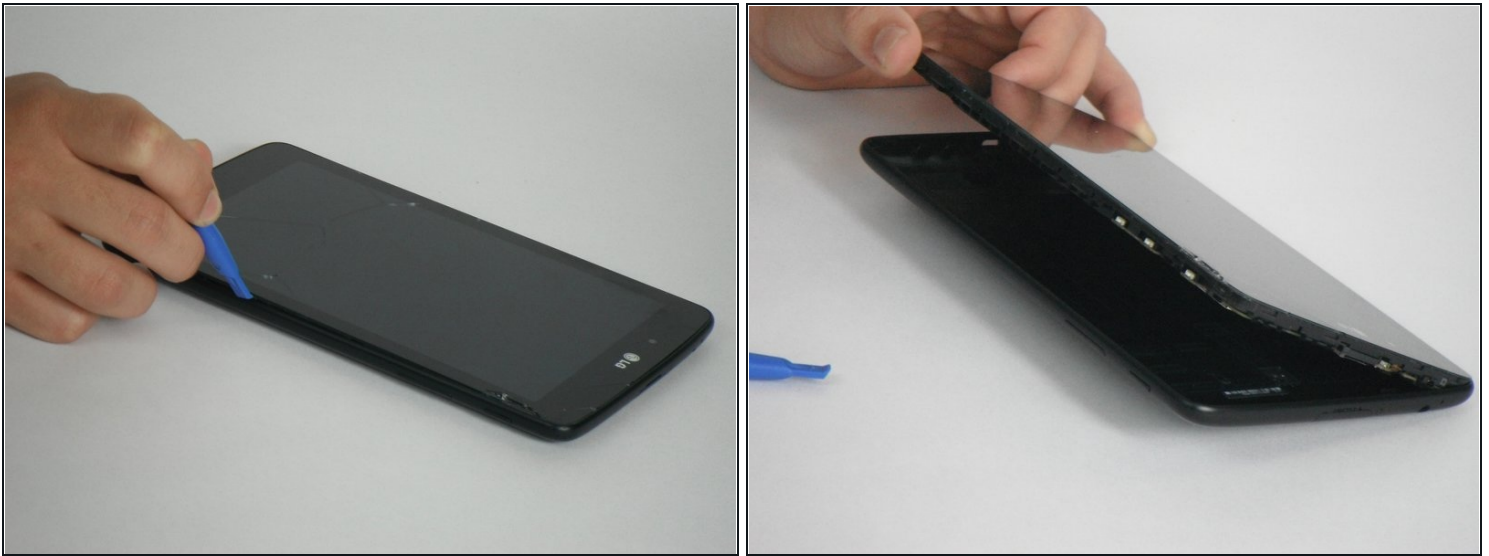
[Essential Electronics Toolkit](#) (1)
[Heat Gun](#) (1)
[RTV Silicone Adhesive Glue for Phone Screen](#) (1)



PARTS:

[LG G Pad 7.0 replacement display](#) (1)

Step 1 — Front Panel

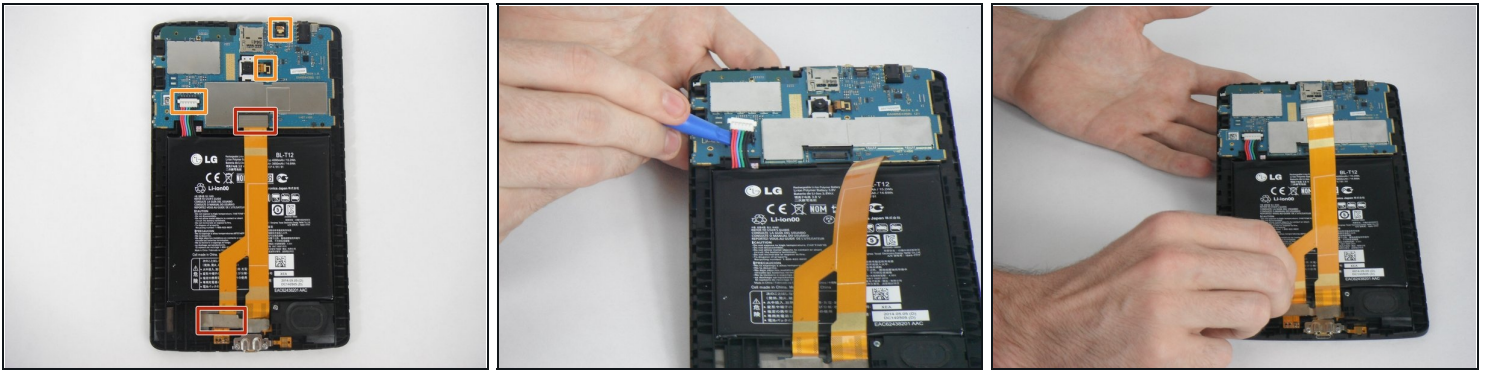


- The screen assembly is secured to the plastic backing with clips. Insert the plastic opening tool between the screen and plastic.
- Carefully work your way around the device making sure not to go too deep damaging any internal components, freeing it from the connecting clips.

⚠ Be careful around the MicroSD, sim card, power, and volume buttons

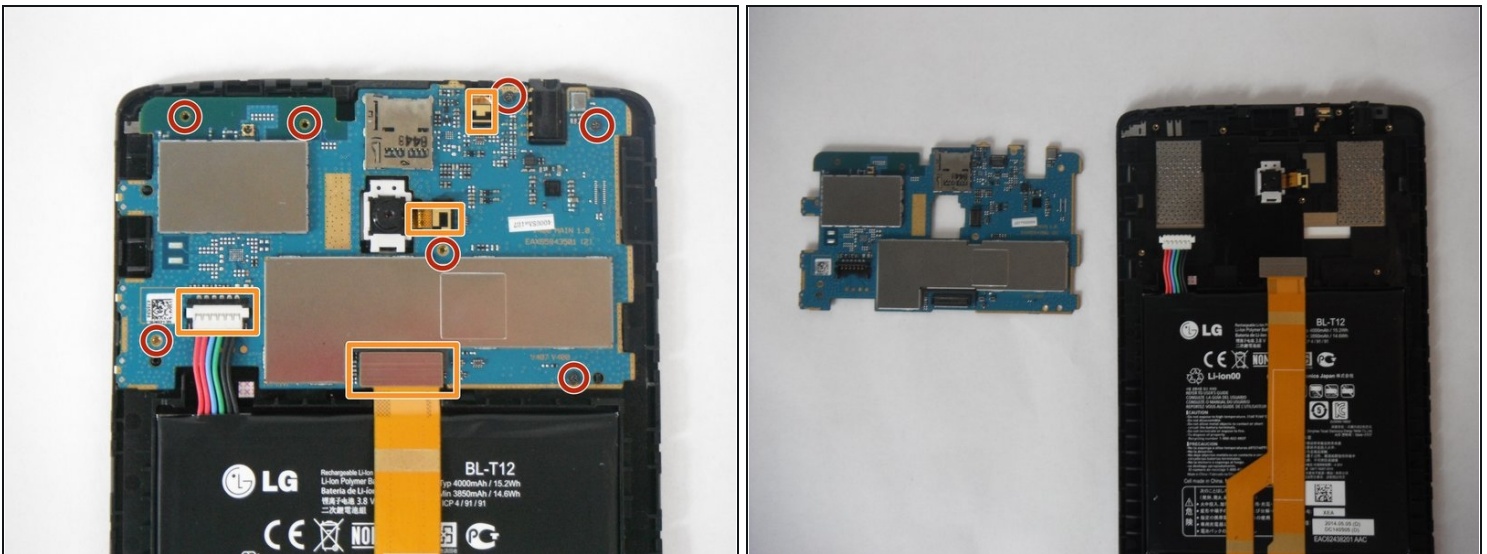
- Lift the tablet from the plastic frame. You may need to loosen some more clips if it is difficult to remove.

Step 2 — Connectors



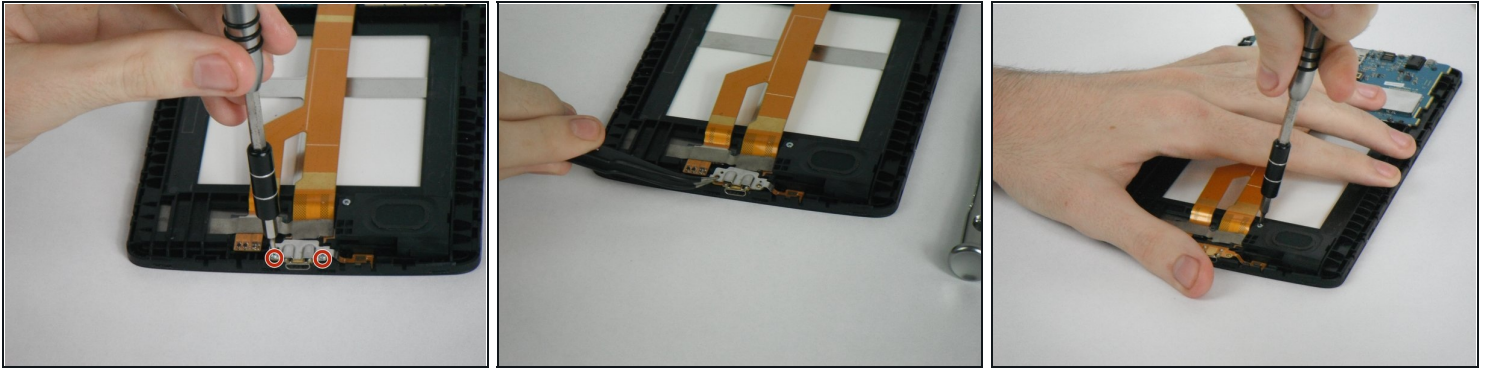
- Remove the red marked connectors by gently prying up. Be sure not to rip the ribbon cables as they are very fragile.
 - ① *You will have to remove the metallic tape near the bottom of the tablet to disconnect the display cable.*
- Remove the three connectors marked in orange by gently prying them upwards. The cables are very fragile so be careful not to rip them.

Step 3 — Logic Board



- Remove the 7 screws marked in red that are securing the logic board to the case.
- **Be sure that all the connectors marked in orange are removed before pulling out the mother board.**
- Very carefully remove the logic board after the screws have been removed

Step 4



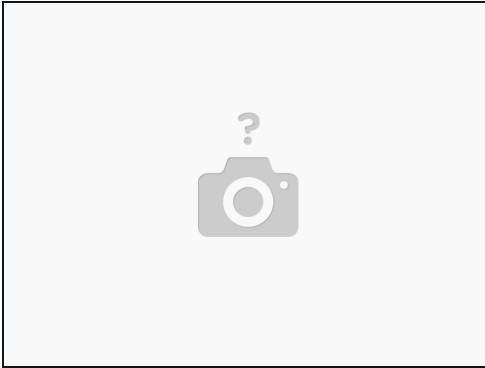
- Remove the two screw marked in red.
- Using the [tweezers](#) , gently pull out the metal bracket that holds the charging port in place.
- Carefully pull out the ribbon connector in orange.
- Remove the one screw that holds the speaker in place.
- Slowly pull out the speaker.

Step 5



- Insert your new mother board with the 7 screws
- Reconnect all the connectors marked in red back to the mother board.

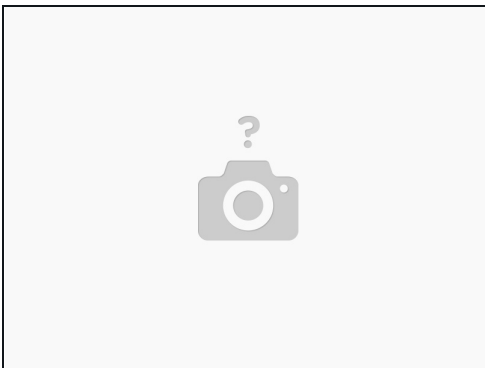
Step 6 — Display



- Flip your device. Begin to heat the adhesive holding the display to loosen from the plastic midframe.
- Slowly work your way around removing the display from the midframe with a razor blade.

⚠ When inserting your razor make sure to not go in too deep. This will prevent the razor from cutting into any vital components.

Step 7



- Take your new display and apply the adhesive or double side tape to adhere to the plastic frame.
- For best results use the biggest size that will fit the frame without overlapping with the lcd part.
 - ① *You can find displays that already come with a new frame and/or adhesive*
- Press firmly all around after installing the new display. Allowing the adhesive/double side tape to have a better bond.

Give some time for the adhesive to dry completely all the way around. When reassembling your device just follow the steps above in reverse order.