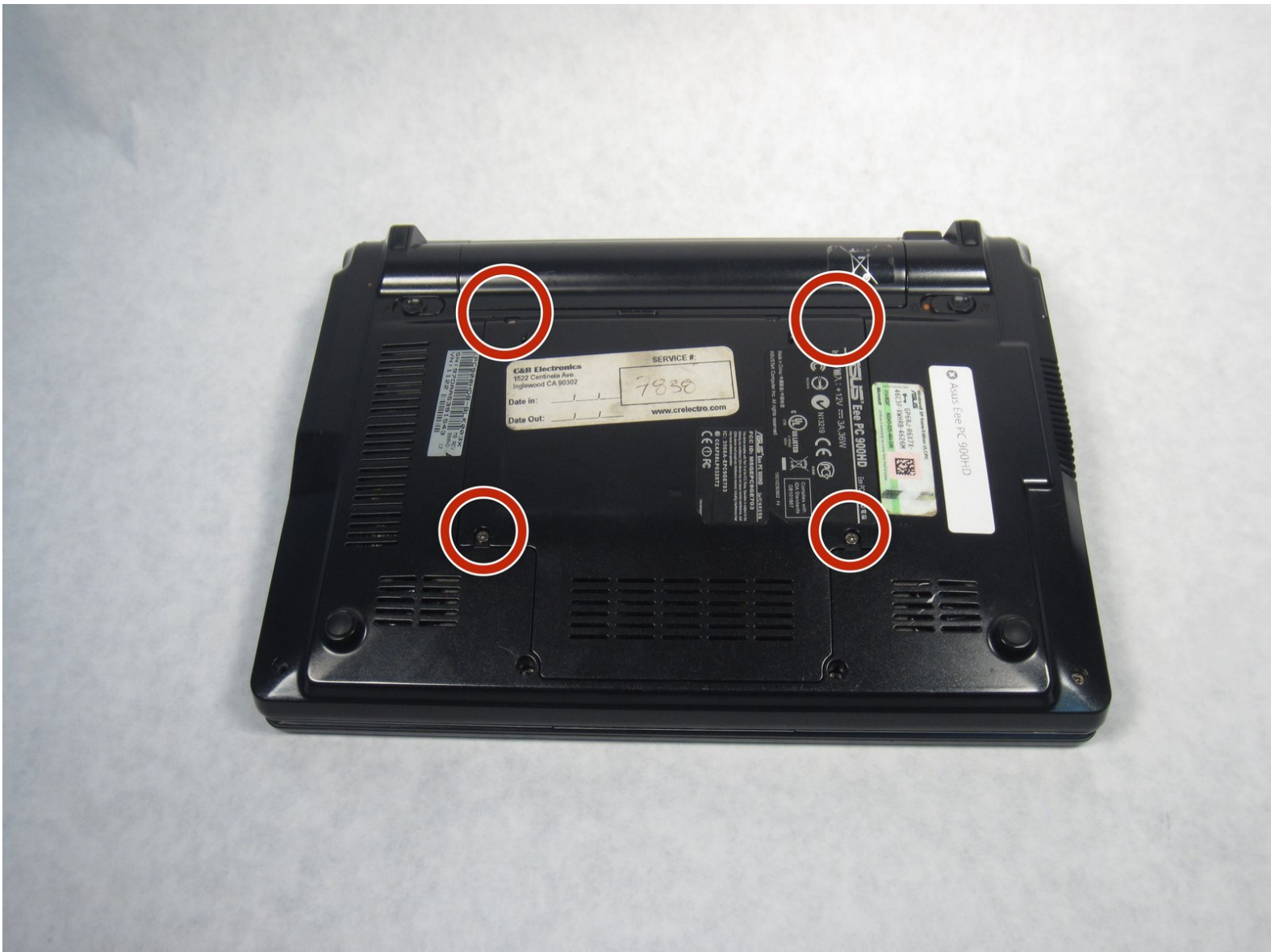




ASUS Eee PC 900HD Hard Drive Replacement

Replace your hard drive if it is not working properly.

Written By: Kendall Marie Mehlhorn



INTRODUCTION

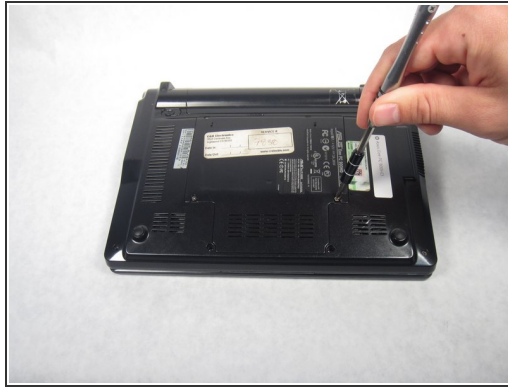
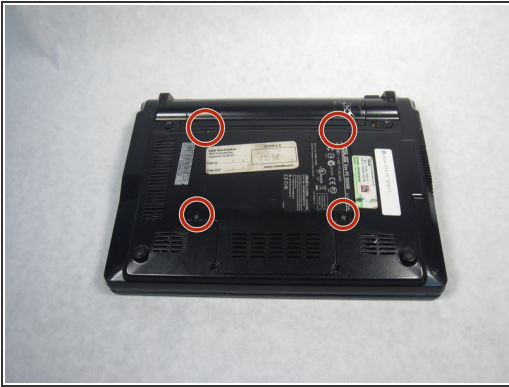
This repair might be necessary for any type of faulty hard drive that may not be functioning correctly. In order to replace the hard drive, be prepared to use a few tools, and be cautious with small fragile parts when taking apart the device.



TOOLS:

- [iFixit Opening Tools](#) (1)
 - [Philips Size J0 Screw Driver](#) (1)
-

Step 1 — Hard Drive



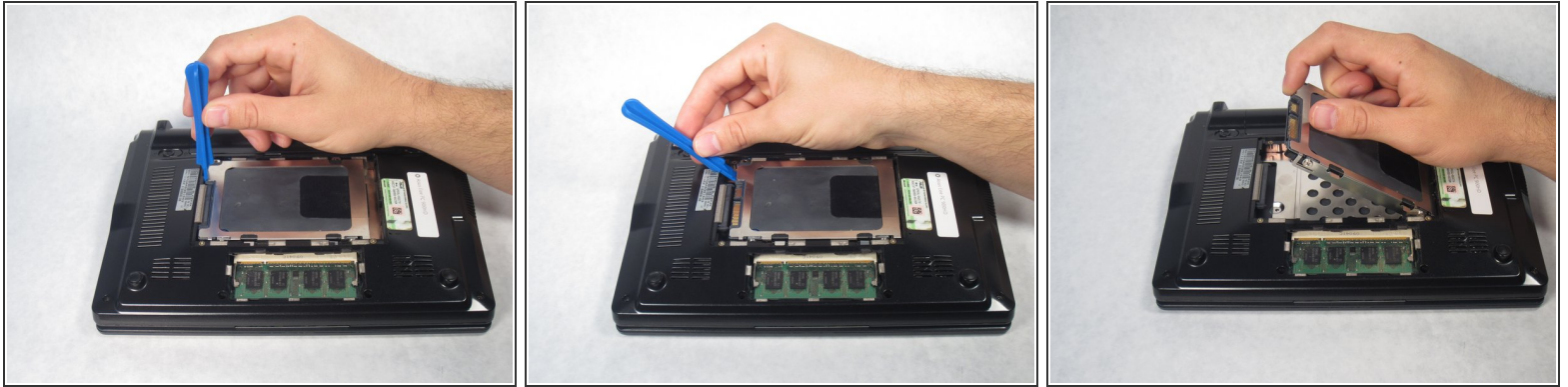
- Remove the four 4.76 mm Philips screws on the back of the laptop using the Phillips J0 Screwdriver.

Step 2



- Use a plastic opening tool to remove the back cover.

Step 3



- Starting from the left, use a plastic opening tool to slide the hard drive all the way to the right.
- Once the hard drive is completely to the right, pull up on the hard drive to remove.

To reassemble your device, follow these instructions in reverse order.