



HP Envy 700-030qe Power Supply Replacement

Replace the Power Supply.

Written By: Yoav Rosenberg



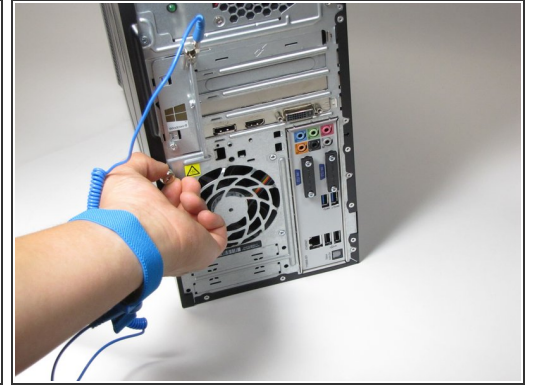
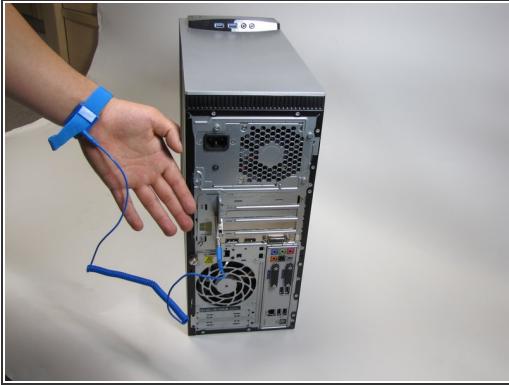
INTRODUCTION

If your are having problems turning on the computer your power supply might be at fault. If you need to replace it you will need to remove the side panel, disconnect and dismount the power supply.

TOOLS:

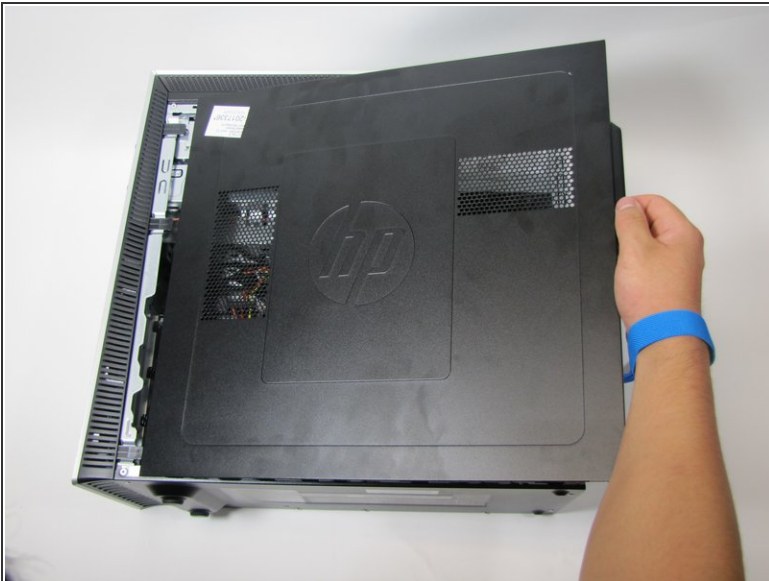
- [T15 Torx Screwdriver](#) (1)
 - [Anti-Static Wrist Strap](#) (1)
-

Step 1 — Power Supply



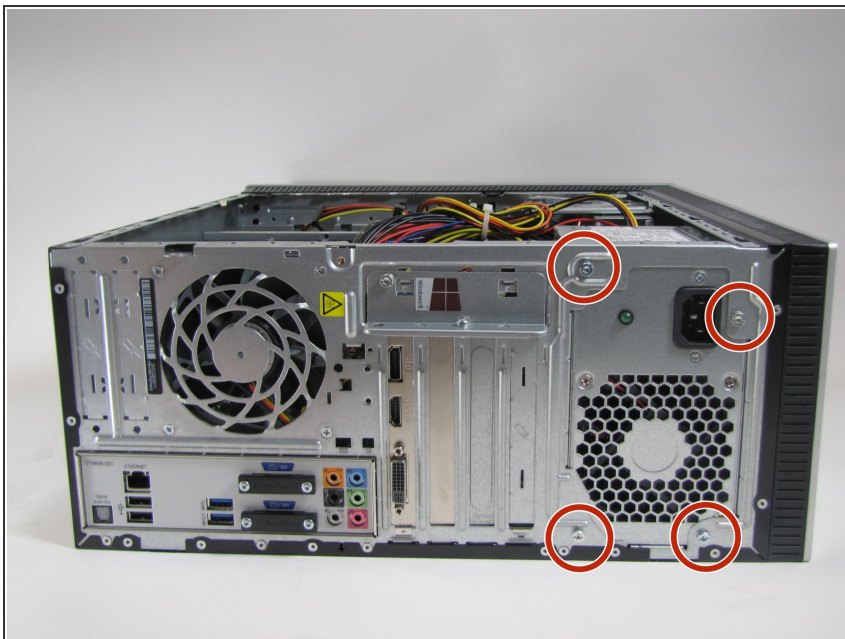
- Make sure that you are wearing your anti-static wristband. This will prevent damaging any internal parts with any built up static electricity.
- Unscrew the 10.5mm screw on the left of the desktop using your hand.
- ⓘ If it is too tight you may use a torx-head screwdriver or a flat-head screwdriver.

Step 2



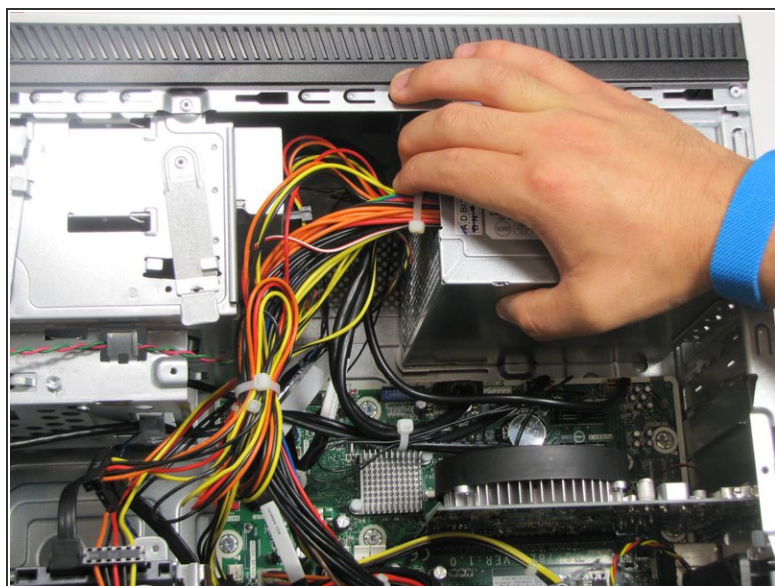
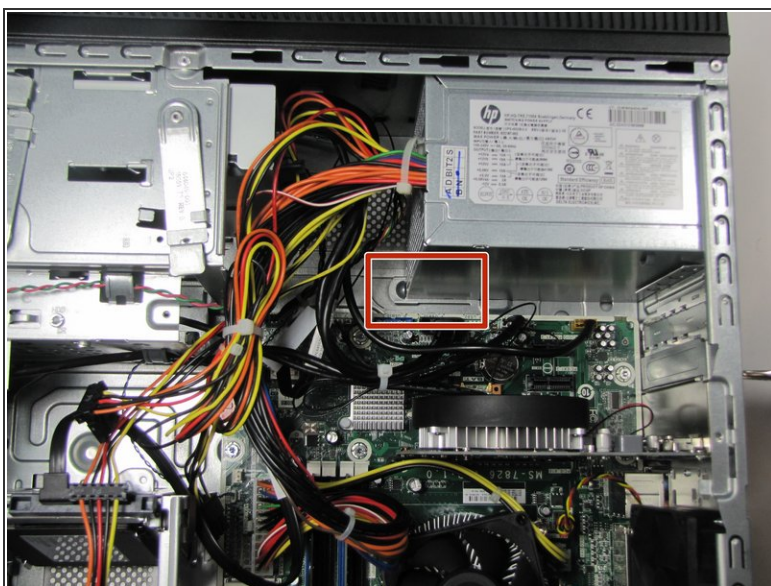
- Remove the side panel by sliding it towards the back of the desktop and pulling up on it as shown.

Step 3



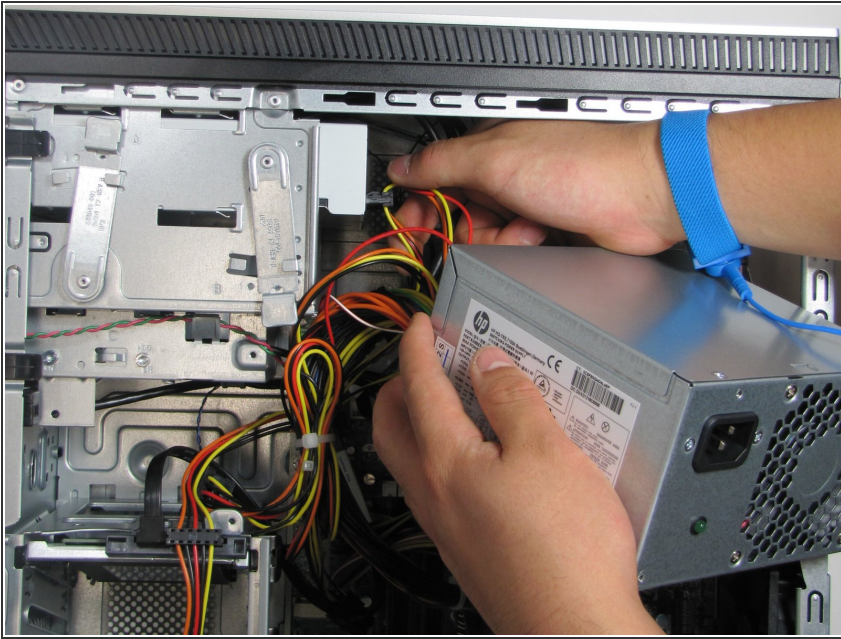
- Remove the four 5mm screws holding the power supply in place with a T15 Torx screwdriver.

Step 4



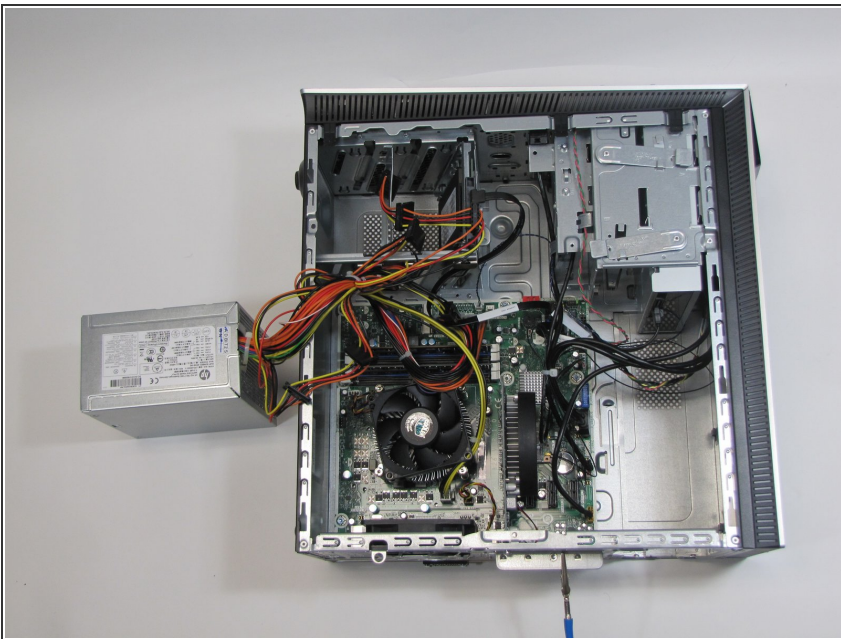
- Undo the clasp which holds the power supply in place by pushing down on it.
- Pull out the power supply up and towards you.

Step 5



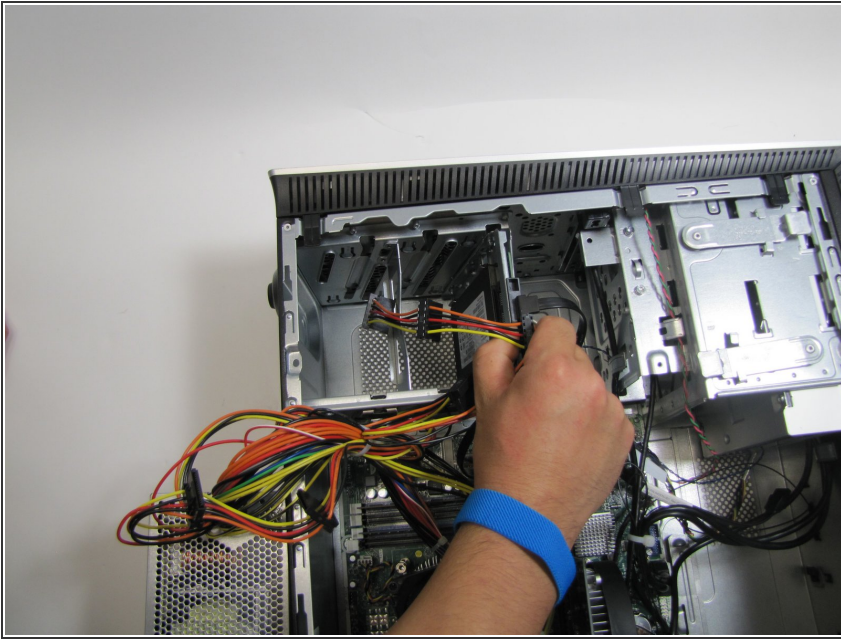
- Unplug the power cable going to the CD drive by pulling straight.

Step 6



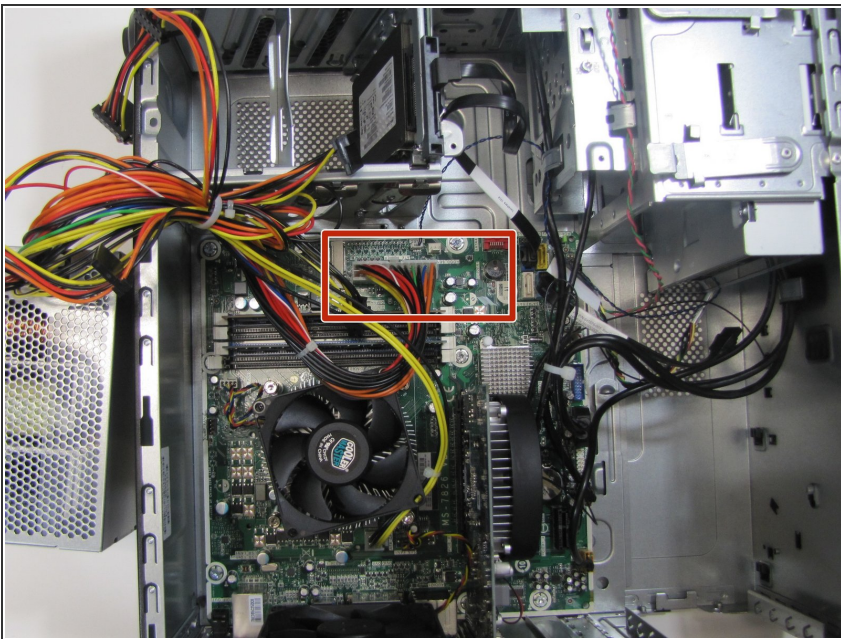
- Set aside the power supply on the left side of the computer.

Step 7



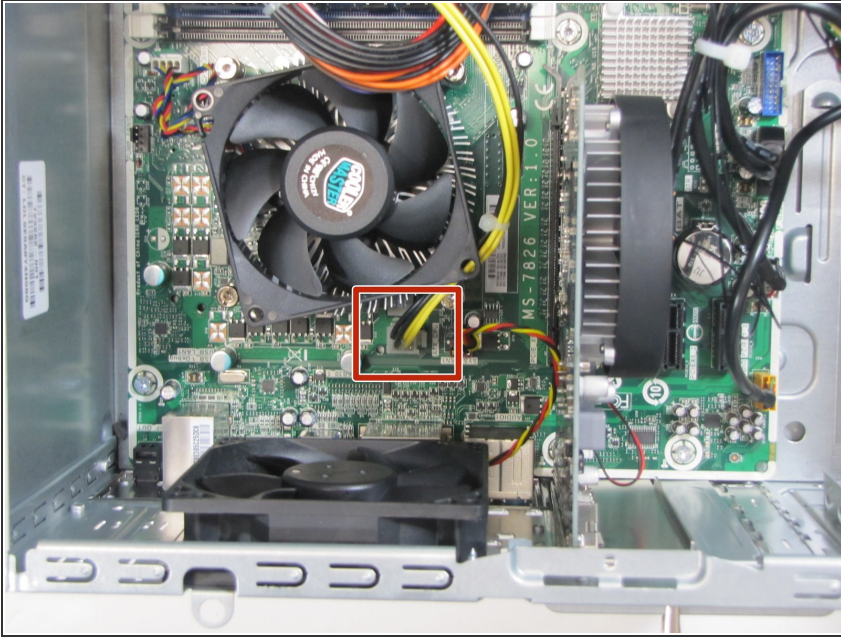
- Unplug the SATA interface power cable going to the hard drive by pulling straight up.

Step 8



- Unplug the power cable going to the mother board by pulling straight up.

Step 9



- Unplug the power cable going to the fan by pulling straight up.

To reassemble your device, follow these instructions in reverse order.