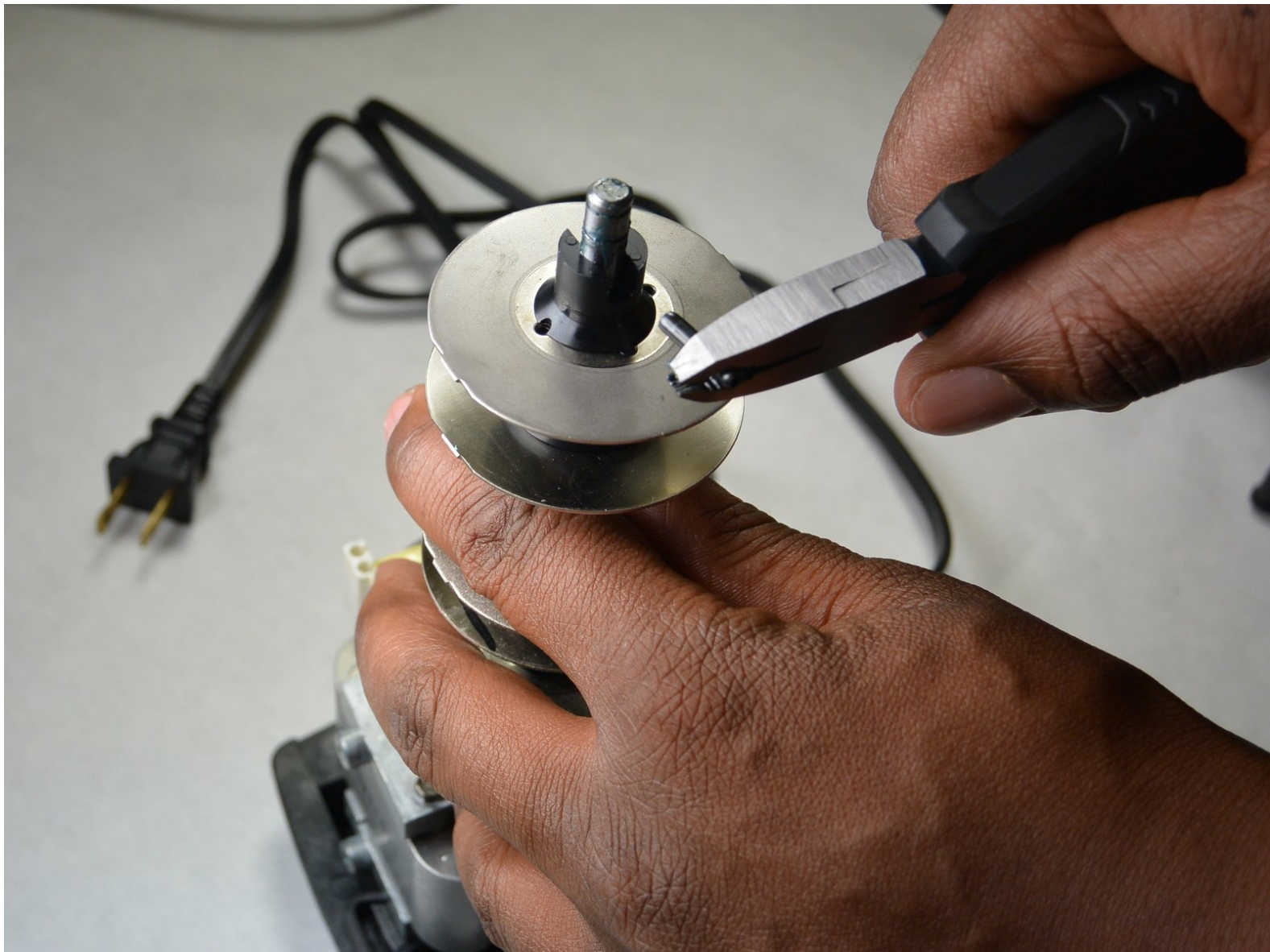




# Chef's Choice M115 Linkage Pins Replacement

If the sharpening stones become loose or do not...

Written By: James Herin



## INTRODUCTION

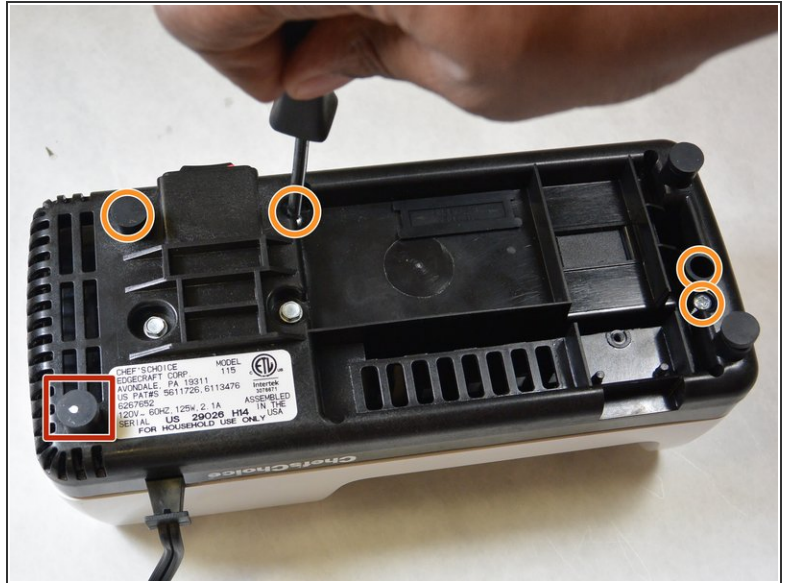
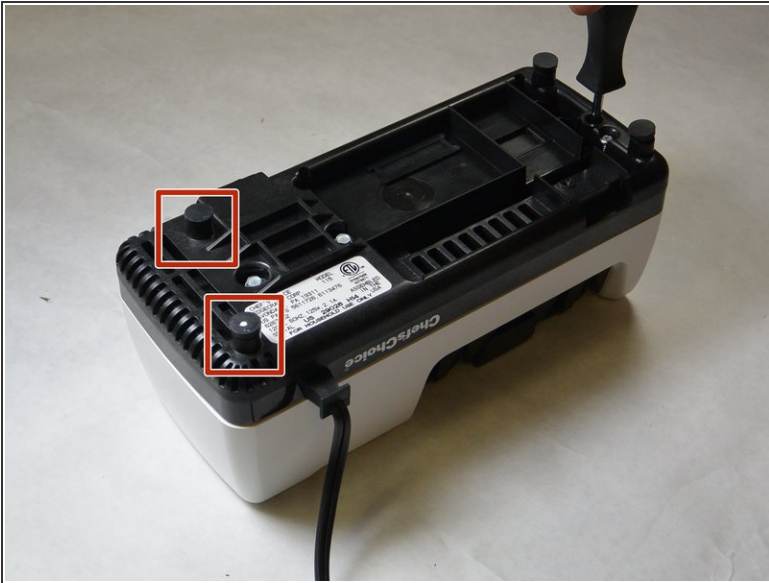
If the sharpening stones become loose or do not apply the correct pressure to the knives, this could be caused by either broken or missing linkage pins. These pins hold the sharpening stones in place on the motor axle. Replacing a broken or missing pin is a relatively easy process.

---

### TOOLS:

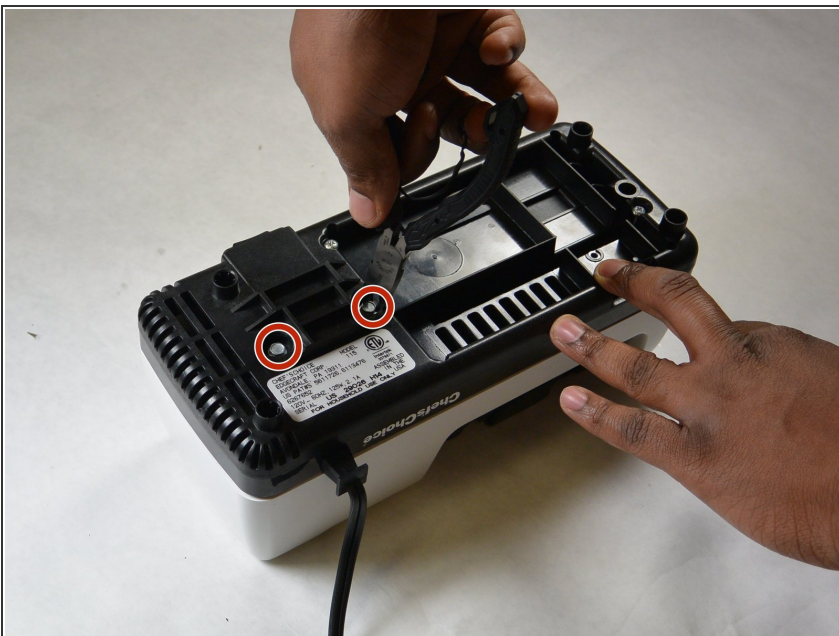
- [Screwdriver](#) (1)
  - [Slip Joint Pliers](#) (1)
-

## Step 1 — Case



- Remove the two rubber feet on the motor side of the device.
- Remove the five Phillips screws from the bottom of the case.
- ⓘ These screws are recessed deep in the device, so a long, thin screwdriver is required.

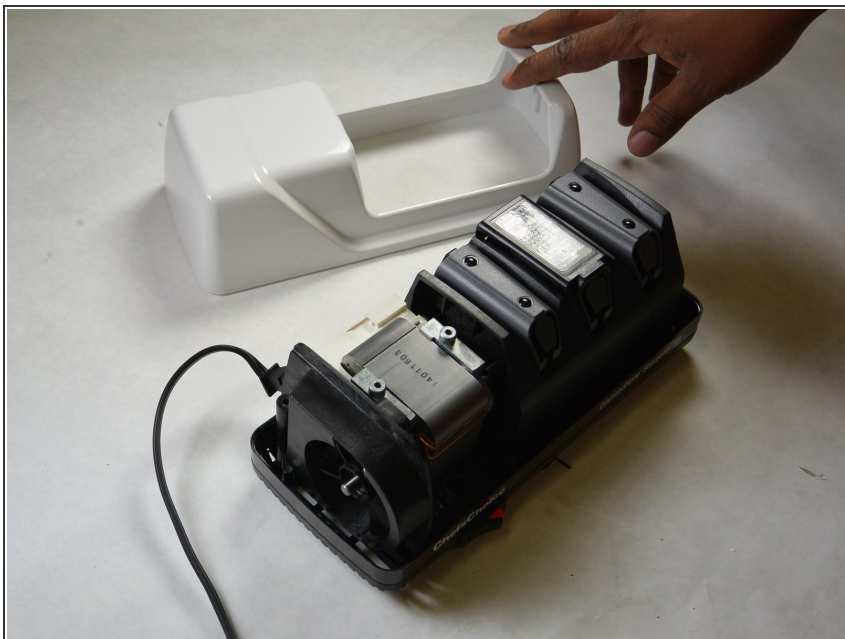
## Step 2



- Remove the two hex-cap screws on the bottom using a pair of pliers.

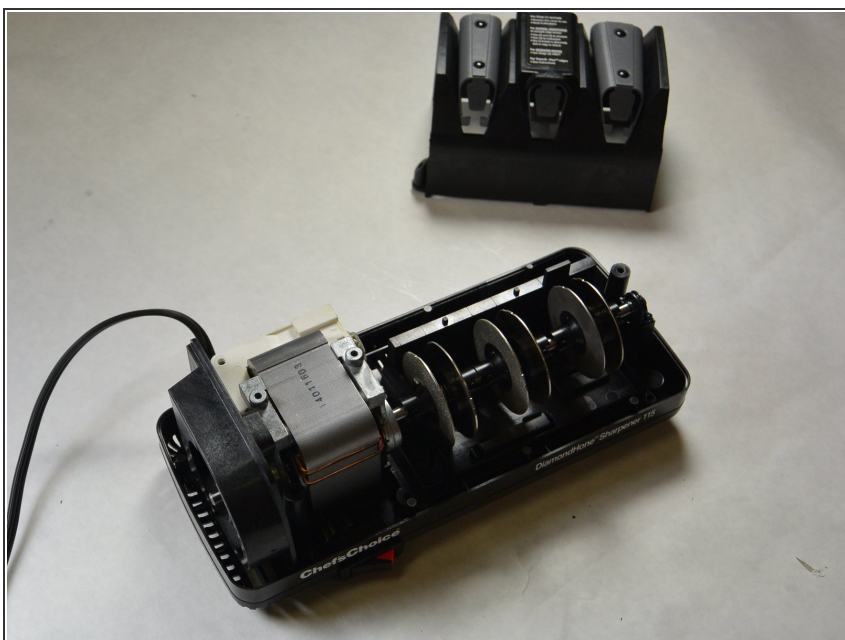


### Step 3



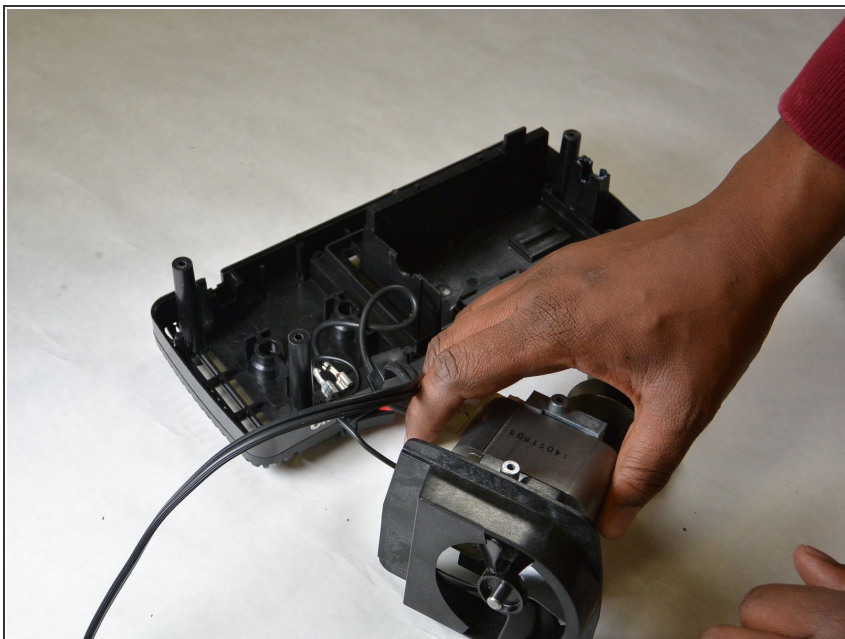
- Carefully flip the device right-side-up while grasping the top and bottom pieces.
- ⓘ The white cover should lift off with no resistance. If it does not, ensure all screws were removed in previous step.

### Step 4



- Remove the sharpener guard by gently pulling up on it.
- ⓘ If the sharpener guard does not come off easily, ensure all screws were removed in step 1.

## Step 5 — Grinding Disc Linkage Pins



- Remove the motor and shaft assembly from the bottom of the case housing.

## Step 6



- Use a screwdriver to push the pin out of the rod.
- Use pliers to pull the pin the rest of the way out.

To reassemble your device, follow these instructions in reverse order.