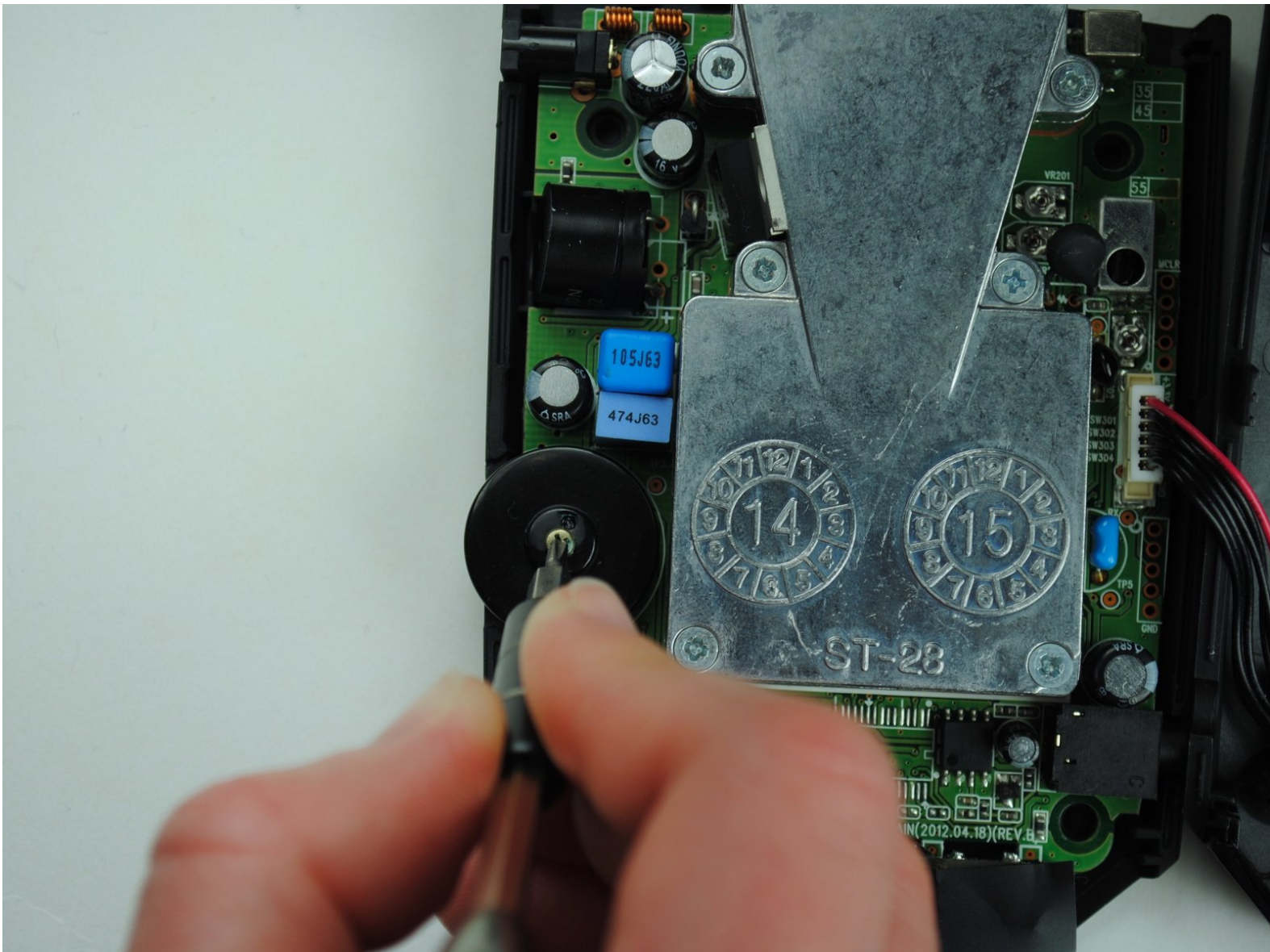




Cobra SPX 5300 Audio Dial Replacement

Replace your audio dial if you are having problems with audio distortion in the Cobra SPX 5300.

Written By: Samantha Delle



INTRODUCTION

This guide will walk you through replacing the audio dial.



TOOLS:

- [Phillips #0 Screwdriver](#) (1)
 - [Phillips #00 Screwdriver](#) (1)
-

Step 1 — Windshield Bracket Mount



- Remove the four 9.5 mm Phillips #0 screws from the back of the device.

Step 2



- Pull the black plastic back case off of the device.

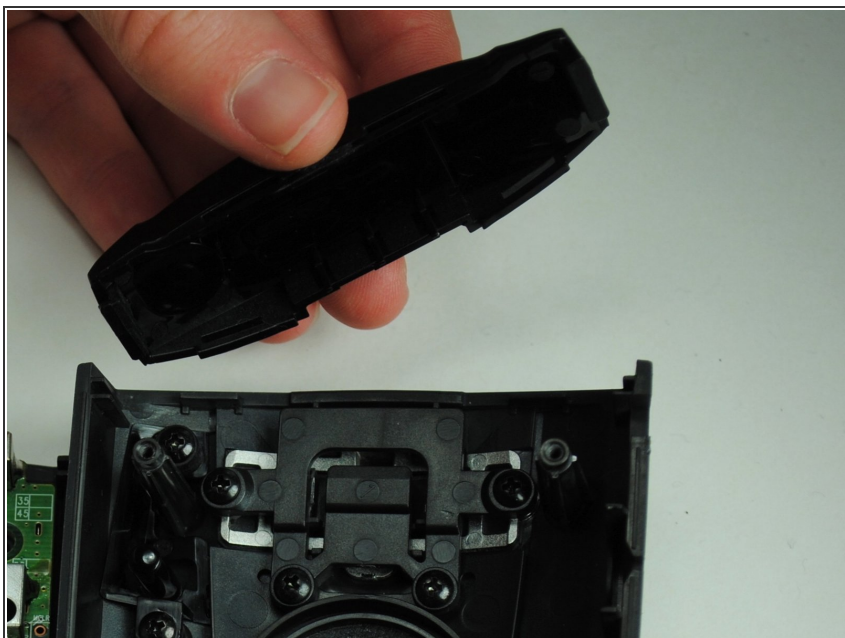
Step 3



- Lift up the motherboard and lay it flat next to the device.

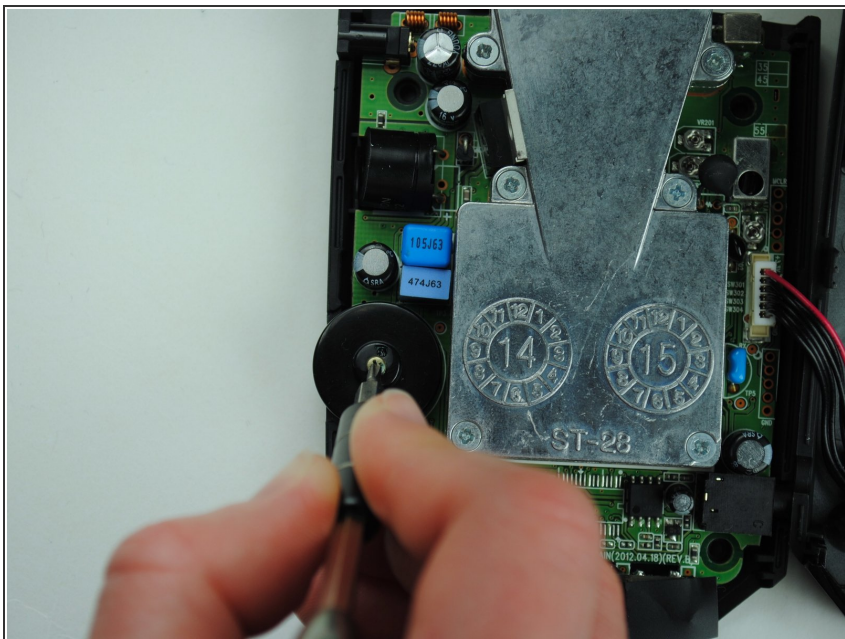
⚠ Be careful not to sever the wires. The buttonboard is connected to the motherboard by the wires.

Step 4



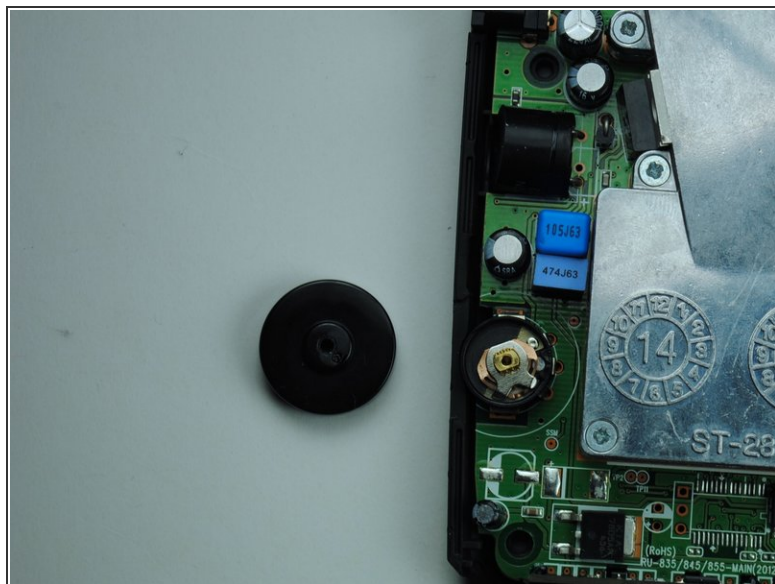
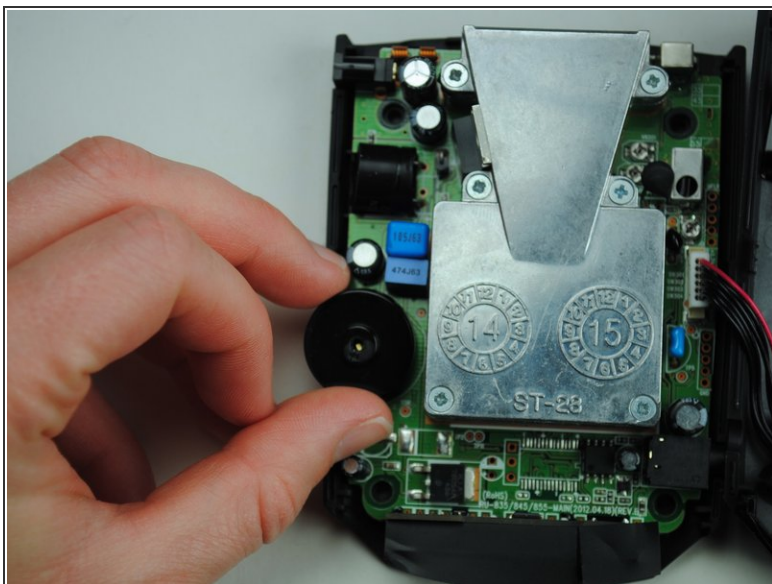
- Remove the windshield bracket mount.

Step 5 — Audio Dial



- Remove the one 4.8 mm Phillips #00 screw from the center of the audio dial.

Step 6



- Remove audio dial.

To reassemble your device, follow these instructions in reverse order.