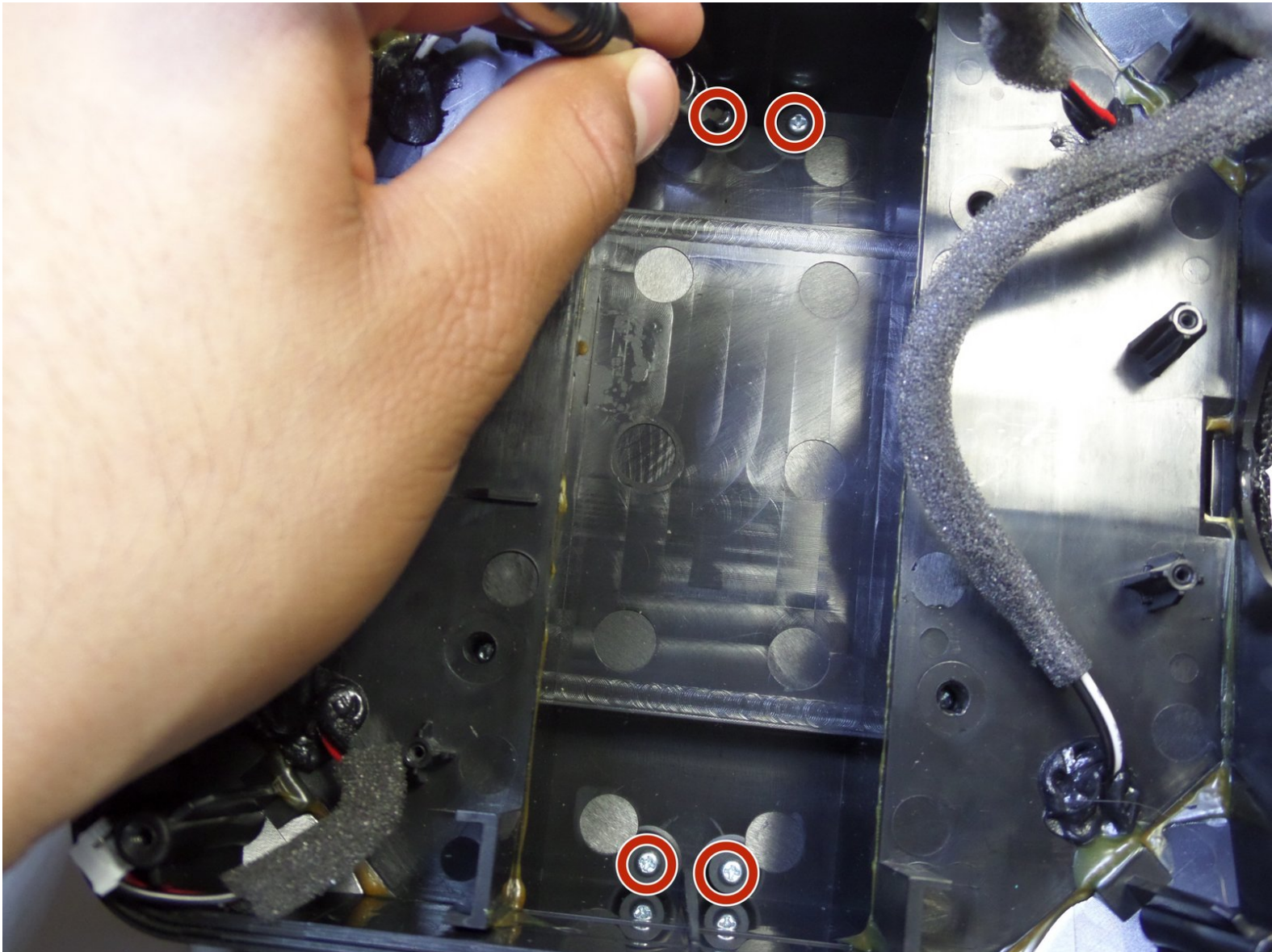




# TDK Life on Record Trek 360 Handle Replacement

This guide will aid you in replacing the handle bar of the TDK Life on Record Trek 360

Written By: Eduardo Barrios





## TOOLS:

- [Metal Spudger](#) (1)
- [Tweezers](#) (1)
- [Phillips #1 Screwdriver](#) (1)
- [Phillips #0 Screwdriver](#) (1)
- [T8 Torx Screwdriver](#) (1)

## Step 1 — Disassembling TDK Life on Record bottom panel



- Remove the four rubber feet of the device using a metal spudger.

## Step 2



- Remove the four 9 mm Phillips #0 screws located under the feet of the device.
- Remove the four 9 mm Torx #8 screws located on each side of the bottom the device.



### Step 3



- Pull the bottom cover of the device towards you.

### Step 4



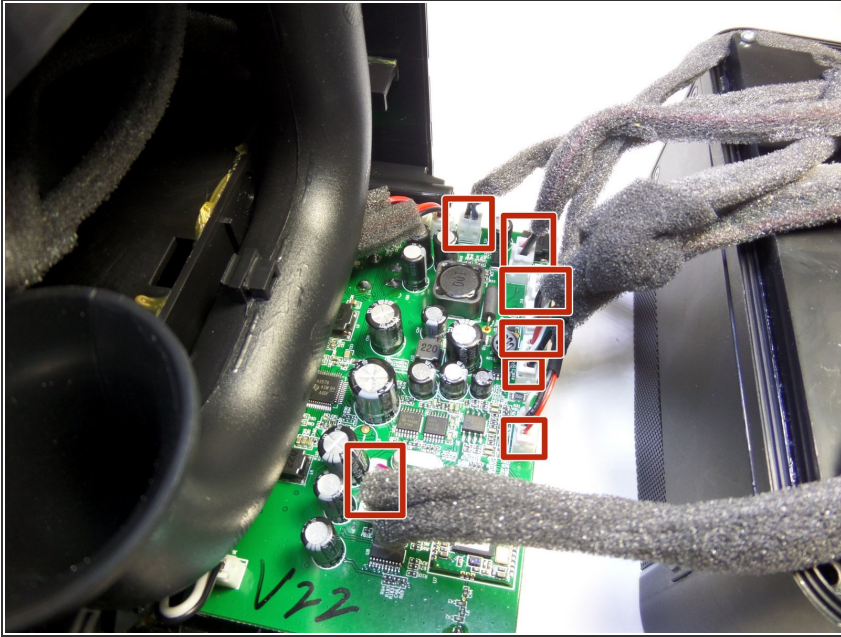
- Remove the four 13 mm Phillips #1 screws.

## Step 5



- Use one hand to grip the device from the side of the handle, and use the other hand to grip the side of the device that contains the woofer
- ⓘ The woofer is the circular component located at the bottom of the device after the bottom cover has been removed
- Pull apart the compartments by applying force in opposite directions.
- ⚠ Do not pull with extreme force!! There are many electrical wires inside the device that can become damaged if the bottom panel is removed without care

## Step 6



- Disconnect the seven cables attached to the motherboard.
- ⚠ Do not use too much force when pulling on the wires. Pulling with too much force can damage the wires.

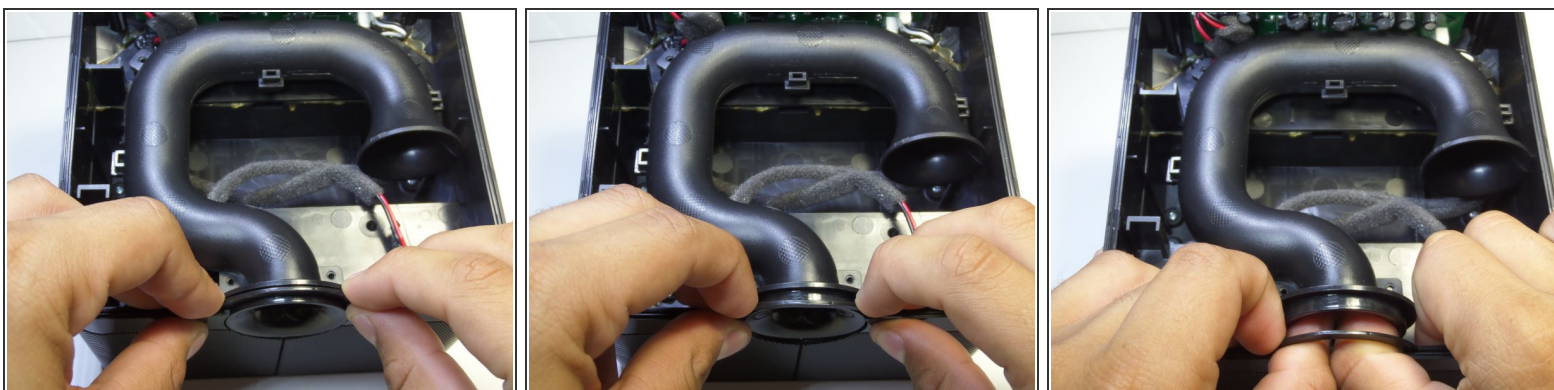
## Step 7 — Air Vent Tube



- Remove the four 8 mm Phillips #1 screws.

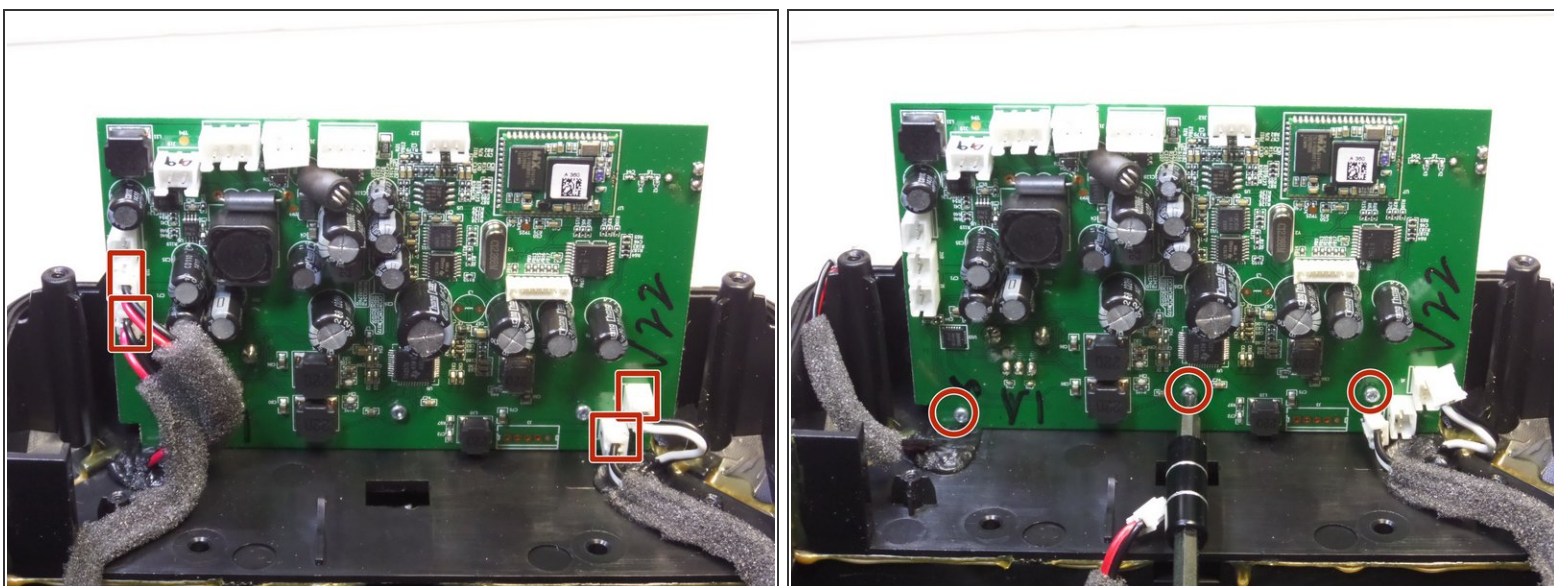


## Step 8



- place your hands on each side of the air vent and then place your index finger on the thin plastic half circle that holds the vent in place.
- Pull the plastic half circle towards you.
- Put both of your hands inside the tube as shown and push away from you.

## Step 9 — Motherboard



- Remove the four wired clips by pulling on the wires.
- Remove the three 6 mm Phillips #1 screws.

## Step 10



- Remove the volume control knob, which is located at the front of the speaker, by pulling it towards you.

## Step 11



- Using tweezers, turn the nut counter-clockwise and remove the nut.

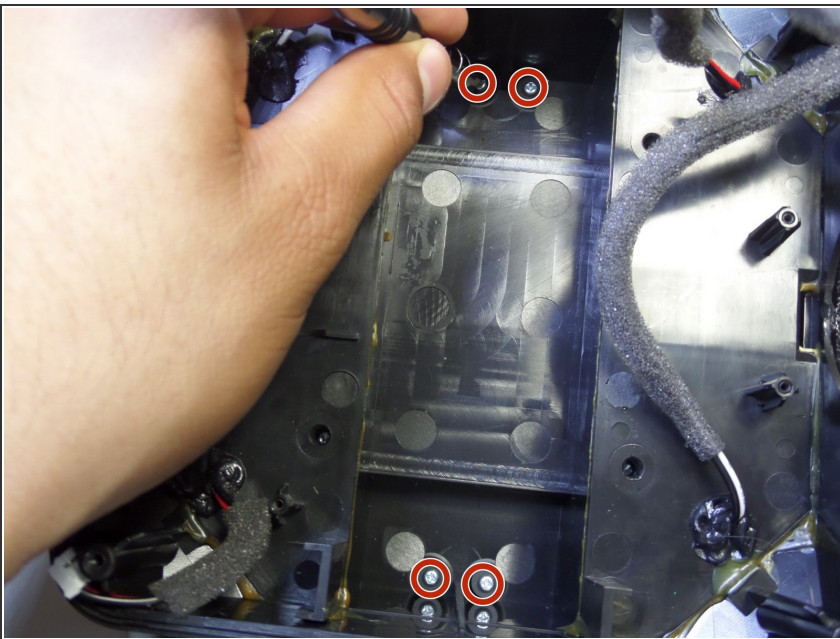


## Step 12



- Push the metal part that holds the volume control knob away from you.

## Step 13 — Handle



- Remove the four 13 mm Phillips #1 screws.

## Step 14



- Use your left hand to hold the top portion of the speaker in place.
- Using your right hand, pull the handle away from the device.

To reassemble your device, follow these instructions in reverse order.