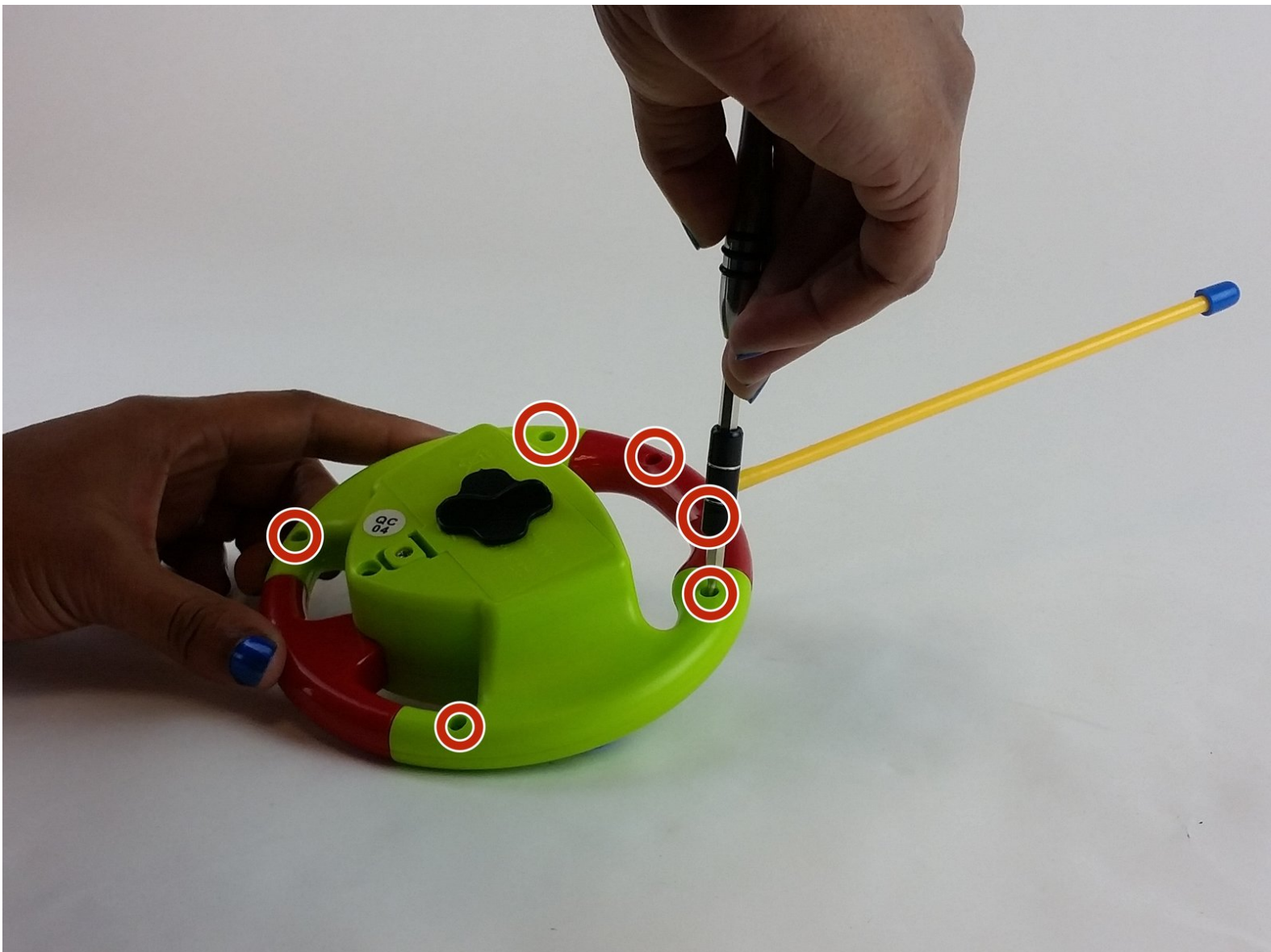




Beiens Cartoon RC Race Car Remote Control Antenna Replacement

This guide will help you take a part and replace the antenna in your Beiens Cartoon RC Race Car remote.

Written By: Amber Ashley



INTRODUCTION

The Beiens Cartoon RC Race Car is a toy for children. It is controlled by using a remote control. Children can use the remote control with a certain distance to play with this toy.

There is a common error with this type of toy, which is the problem with the remote control. According to the range of how most children play, problems with the antenna often happen. Recheck the condition of its battery power before replacing the antenna.

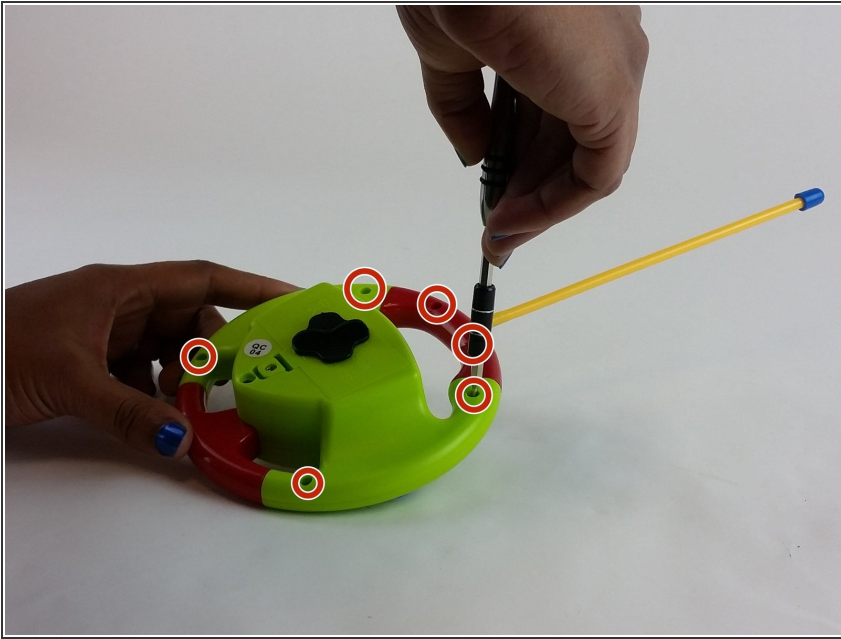
A proper direction of changing the antenna of Beiens Cartoon RC Race Car remote is very important. Therefore, this procedure can help with fixing the problem. Based on these directions, the customers can avoid new damages to the remote control.



TOOLS:

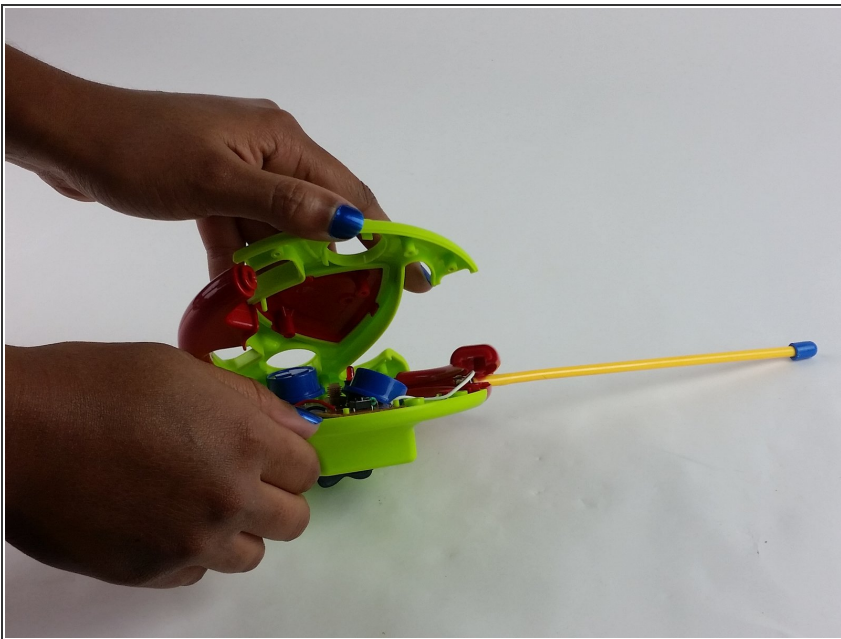
- [Phillips #00 Screwdriver](#) (1)
-

Step 1 — Remote Control Antenna



- Flip the remote control and unscrew all the six 6.5 mm screws with the Phillips #00 screwdriver.

Step 2



- Pull the device apart to find the connection between the antenna and the white wire.

Step 3



- Unscrew the 4.5 mm screw that attaches the antenna in place.

Step 4



- Replace the old antenna with a new one. Attach the new antenna to the white wire and screw it in place.

To reassemble your device, follow these instructions in reverse order.